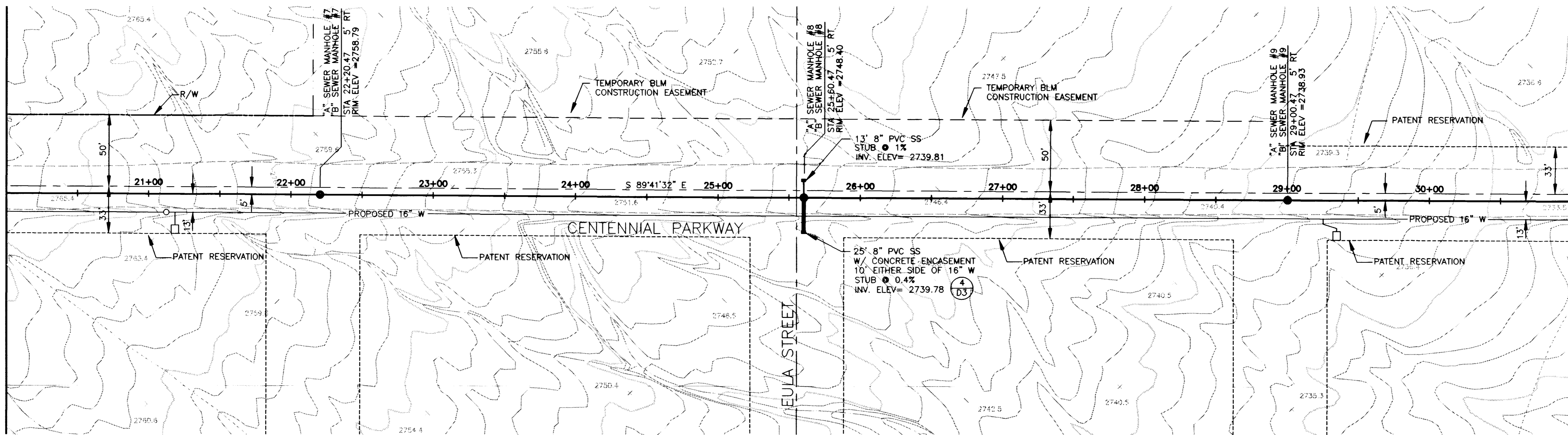


MATCHLINE STA 20+00.00
SEE DWG No. C2



MATCHLINE STA 31+00.00
SEE DWG No. C4

SANITARY SEWER ALTERNATIVES

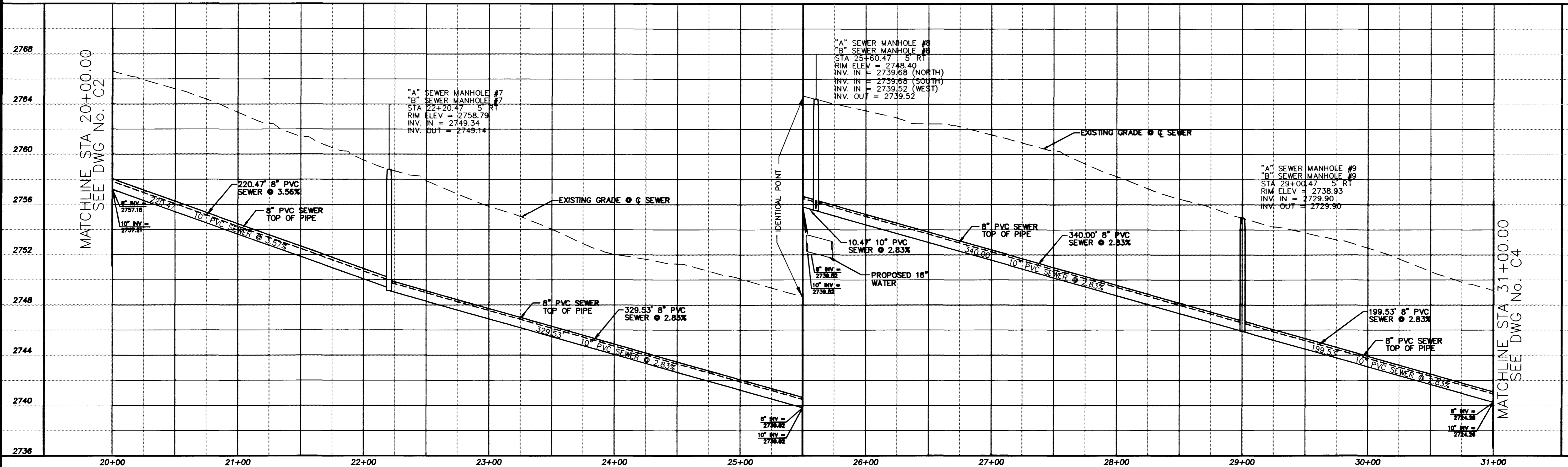
ALT "A" - 8" SEWER STA 1+03.75 TO STA 18+80.47
10" SEWER STA 18+80.47 TO STA 98+90.83
27" SEWER STA 98+90.83 TO STA 125+20.39
30" SEWER STA 125+20.39 TO STA 156+66.01
33" SEWER STA 156+66.01 TO STA 190+44.26
ALT "B" - 8" SEWER STA 1+03.75 TO STA 190+44.26
(FOR BIDDING PURPOSES ONLY)

NOTE:
ALL EXISTING UTILITY LOCATIONS SHOWN HEREON ARE APPROXIMATE ONLY. IT SHALL BE THE CONTRACTOR'S RESPONSIBILITY TO DETERMINE THE EXACT VERTICAL AND HORIZONTAL LOCATION OF ALL EXISTING UNDERGROUND UTILITIES PRIOR TO CONSTRUCTION AND RELOCATE THESE UTILITIES AS NECESSARY. NO REPRESENTATION IS MADE THAT ALL UTILITIES ARE SHOWN HEREON. THE ENGINEER ASSUMES NO LIABILITY FOR UTILITIES NOT SHOWN OR UTILITIES NOT SHOWN IN THEIR PROPER LOCATIONS.

SCALE: HORIZ. 1"=40'
VERT. 1"=4'

Call before you Dig
1-800-227-2800

MATCHLINE STA 20+00.00
SEE DWG No. C2

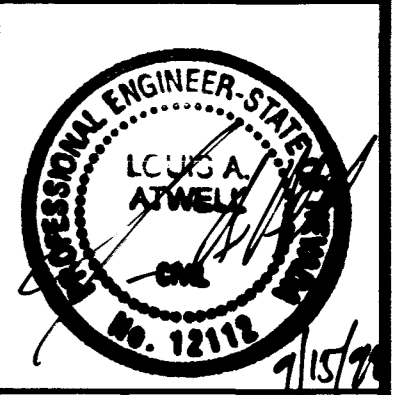


MATCHLINE STA 31+00.00
SEE DWG No. C4

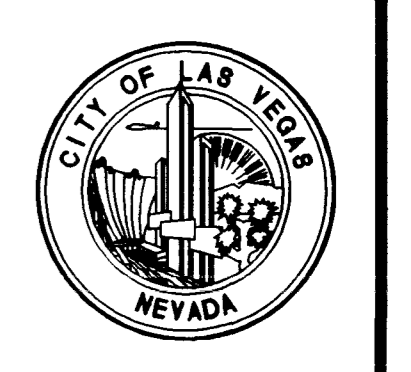
REVISIONS

NO.	DATE	DESCRIPTION

DURANGO INTERCEPTOR SEWER
 DRAWN BY: J. LUSTIG
 CHECKED BY: L. ATWELL
 DATE: 8-31-98
 PROJECT NO.: 51449
 SHEET NO.: 8-31-98
 ENGINEERING PLANNING SURVEYING CONSTRUCTION SERVICES
PBSJ
 801 N. Green Valley Pkwy.
 Henderson, Nevada 89044
 Phone: 702/263-7200



Department of Public Works
DURANGO INTERCEPTOR SEWER
PLAN AND PROFILE
 STA 20+00.00 TO STA 31+00.00



DRAWING No. 8
 C3
 26

