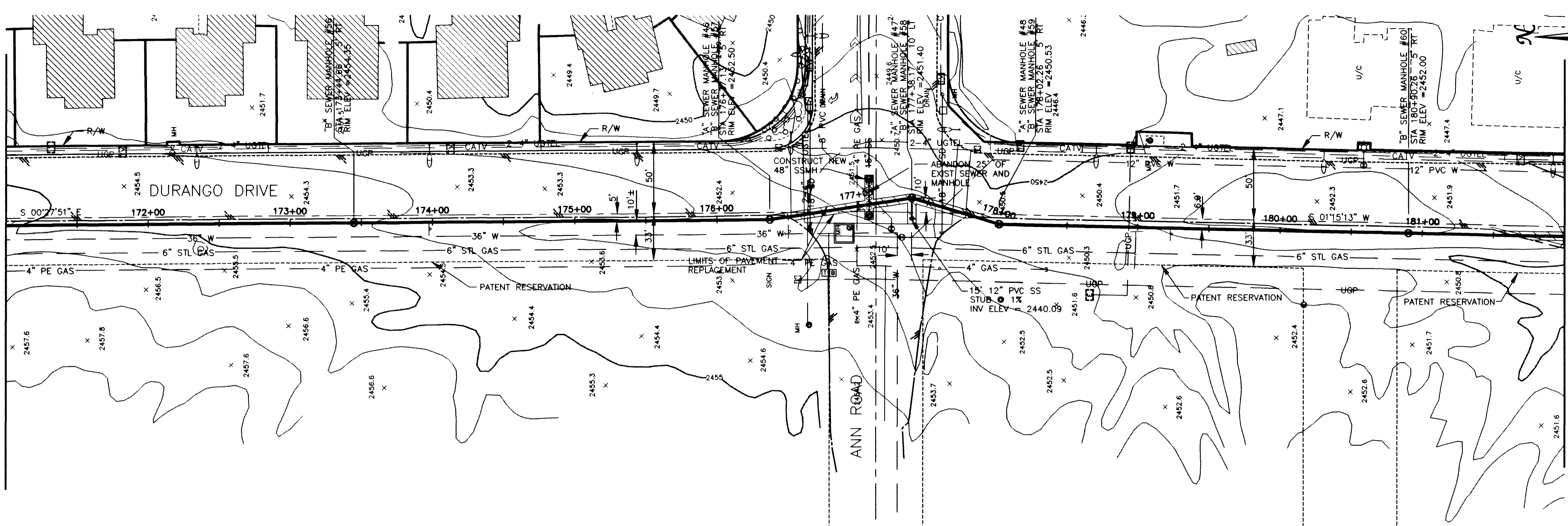
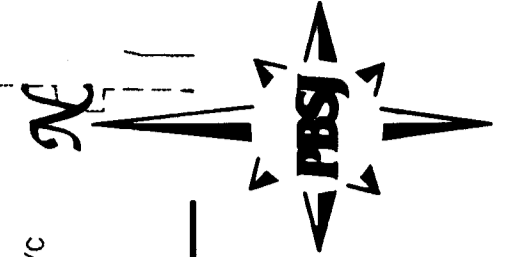


MATCHLINE STA 171+00.00
SEE DWG No. C16



MATCHLINE STA 182+00.00
SEE DWG No. C18



SANITARY SEWER ALTERNATIVES

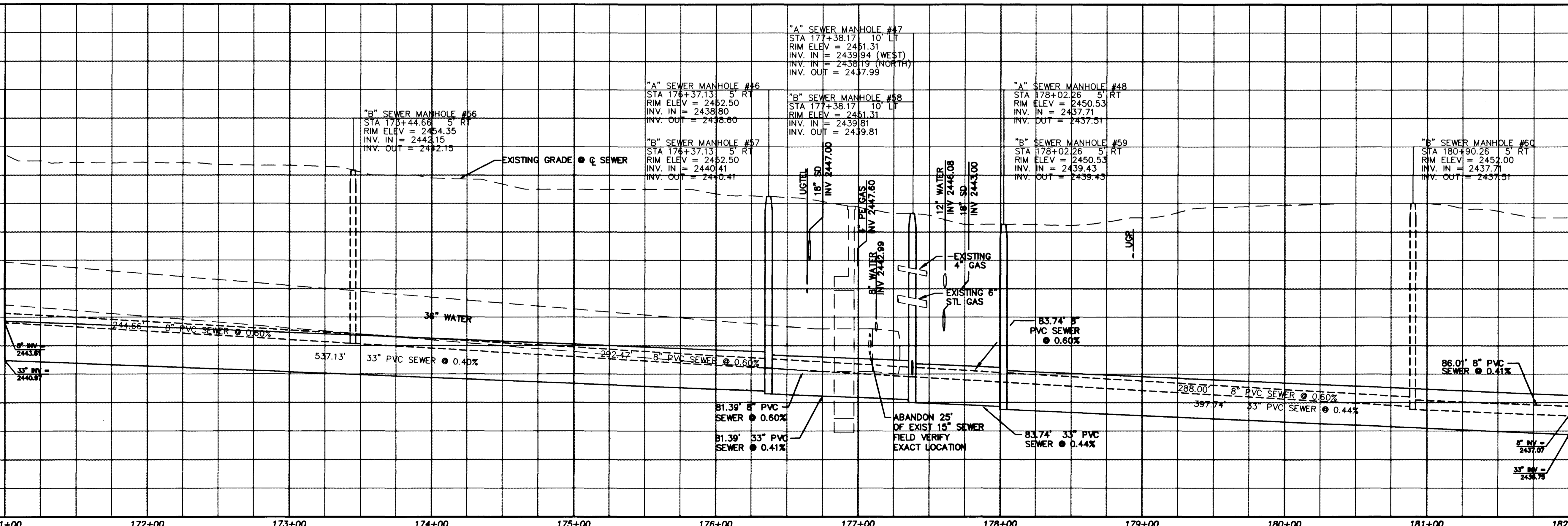
ALT "A" - 8" SEWER STA 1+03.75 TO STA 18+80.47
10" SEWER STA 18+80.47 TO STA 98+90.83
27" SEWER STA 98+90.83 TO STA 125+20.39
30" SEWER STA 125+20.39 TO STA 156+66.01
33" SEWER STA 156+66.01 TO STA 190+44.26
ALT "B" - 8" SEWER STA 1+03.75 TO STA 190+44.26 (FOR BIDDING PURPOSES ONLY)

NOTE:
ALL EXISTING UTILITY LOCATIONS SHOWN HEREON ARE APPROXIMATE ONLY. IT SHALL BE THE CONTRACTOR'S RESPONSIBILITY TO DETERMINE THE EXACT VERTICAL AND HORIZONTAL LOCATION OF ALL EXISTING UNDERGROUND UTILITIES PRIOR TO CONSTRUCTION AND RELOCATE THESE UTILITIES AS NECESSARY. NO REPRESENTATION IS MADE THAT ALL UTILITIES ARE SHOWN HEREON. THE ENGINEER ASSUMES NO LIABILITY FOR UTILITIES NOT SHOWN OR UTILITIES NOT SHOWN IN THEIR PROPER LOCATIONS.

SCALE: HORIZ. 1"=40'
VERT. 1"=4'

Call before you Dig
1-800-227-2600

MATCHLINE STA 171+00.00
SEE DWG No. C16



MATCHLINE STA 182+00.00
SEE DWG No. C18

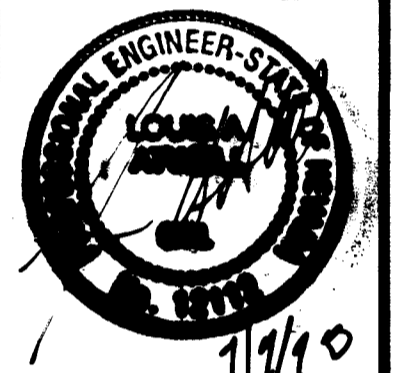
REVISIONS

NO.	DATE	DESCRIPTION	APPROVED

DURANGO INTERCEPTOR SEWER
DRAWN BY: J. ARROYO
DESIGNED BY: J. LUSTIG
CHECKED BY: L. ATWELL
DATE: 8-31-98
JOB NO.: 51449

PBS&J
ENGINEERING, PLANNING, SURVEYING, CONSTRUCTION SERVICES

901 N. Green Valley Pkwy.
Suite 300
Las Vegas, NV 89126
Telephone: 702/263-2274
Facsimile: 702/263-7800



Department of Public Works
**DURANGO INTERCEPTOR SEWER
PLAN AND PROFILE**
STA 171+00.00 TO STA 182+00.00



DRAWING No. 22
C17

