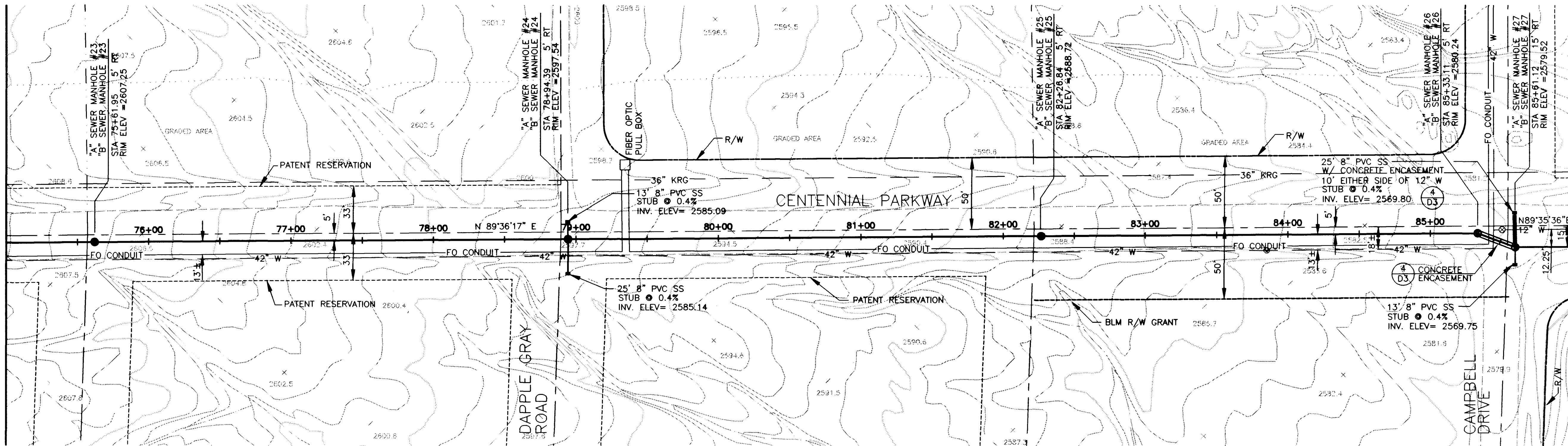


MATCHLINE STA 75+00.00
SEE DWG No. C7



MATCHLINE STA 86+00.00
SEE DWG No. C9

SANITARY SEWER ALTERNATIVES

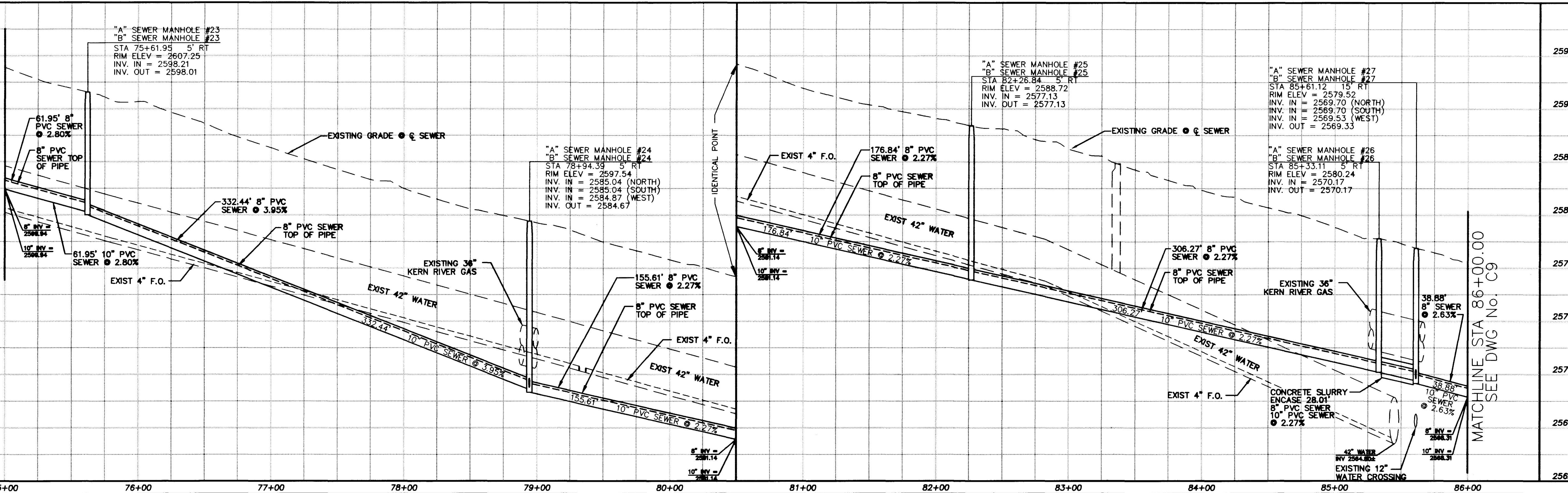
ALT "A" - 8" SEWER STA	1+03.75 TO STA	18+80.47
10" SEWER STA	18+80.47 TO STA	98+90.83
27" SEWER STA	98+90.83 TO STA	125+20.39
30" SEWER STA	125+20.39 TO STA	156+66.01
36" SEWER STA	156+66.01 TO STA	190+44.26
ALT "B" - 8" SEWER STA	1+03.75 TO STA	190+44.26
(FOR BIDDING PURPOSES ONLY)		

NOTE:
ALL EXISTING UTILITY LOCATIONS SHOWN HEREON ARE APPROXIMATE ONLY. IT SHALL BE THE CONTRACTOR'S RESPONSIBILITY TO DETERMINE THE EXACT VERTICAL AND HORIZONTAL LOCATION OF ALL EXISTING UNDERGROUND UTILITIES PRIOR TO CONSTRUCTION AND RELOCATE THESE UTILITIES AS NECESSARY. NO REPRESENTATION IS MADE THAT ALL UTILITIES ARE SHOWN HEREON. THE ENGINEER ASSUMES NO LIABILITY FOR UTILITIES NOT SHOWN OR UTILITIES NOT SHOWN IN THEIR PROPER LOCATIONS.

SCALE: HORIZ. 1"=40'
VERT. 1"=4'

Avoid cutting underground utility lines. It's costly.
Call before you Dig
1-800-227-2600

MATCHLINE STA 75+00.00
SEE DWG No. C7



MATCHLINE STA 86+00.00
SEE DWG No. C9

REVISIONS		DURANGO INTERCEPTOR SEWER	
NO.	DATE	DESCRIPTION	DATE
1	10/17/98	Changed Pipe Size from 30" to 36"	
		DESIGNED BY: L. ATWELL	DATE: 8-31-98
		DRAWN BY: J. ARROYO	DATE: 8-31-98
		CHECKED BY: J. LUSTIG	DATE: 8-31-98
		APP. NO.: 511449	DATE: 8-31-98
		900 N. Green Valley Pkwy. Suite 100 Phoenix, AZ 85024 Telephone: 702/263-5924 Fax: 702/263-7200	
		ENGINEERING PLANNING SURVEYING CONSTRUCTION SERVICES PBSJ	
		APPROVED	

Department of Public Works
DURANGO INTERCEPTOR SEWER
PLAN AND PROFILE
STA 75+00.00 TO STA 86+00.00

CITY OF LAS VEGAS NEVADA	DRAWING No. 13
C8	26

