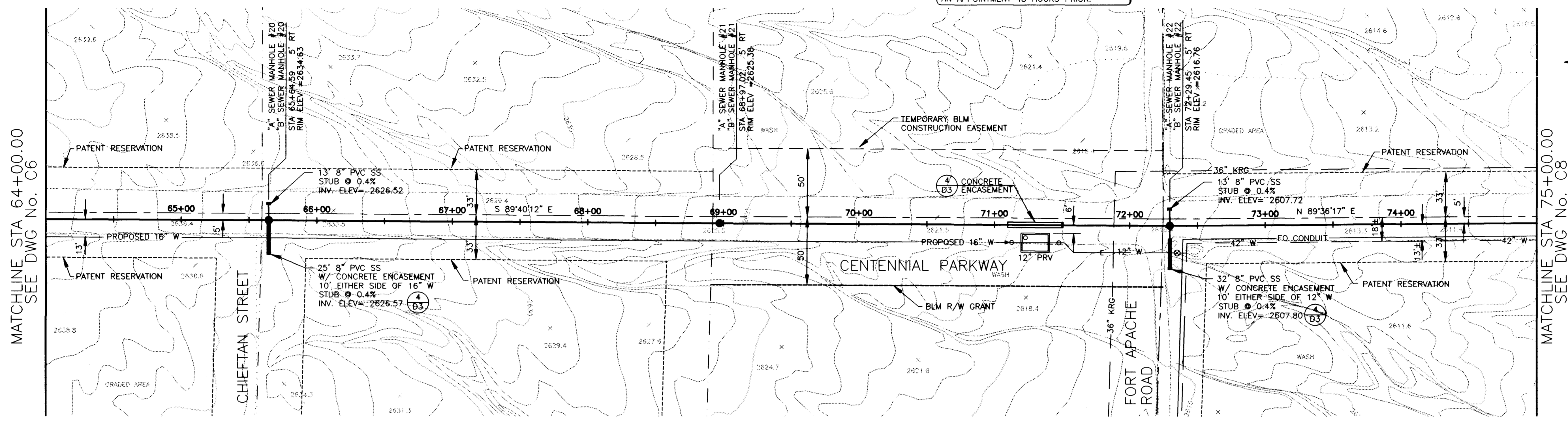


MATCHLINE STA 64+00.00
SEE DWG No. C6



MATCHLINE STA 75+00.00
SEE DWG No. C8

CAUTION:
KERN RIVER GAS LINE, A KERN RIVER GAS TRANSMISSION CO. REPRESENTATIVE MUST BE PRESENT DURING CONSTRUCTION IN AND AROUND EQUIPMENT. CALL 399-1612 FOR AN APPOINTMENT 48 HOURS PRIOR.

SANITARY SEWER ALTERNATIVES

ALT "A" - 8" SEWER STA	1+03.75 TO STA	18+80.47
10" SEWER STA	18+80.47 TO STA	98+90.83
27" SEWER STA	98+90.83 TO STA	125+20.39
30" SEWER STA	125+20.39 TO STA	156+66.01
36" SEWER STA	156+66.01 TO STA	190+44.26
ALT "B" - 8" SEWER STA	1+03.75 TO STA	190+44.26

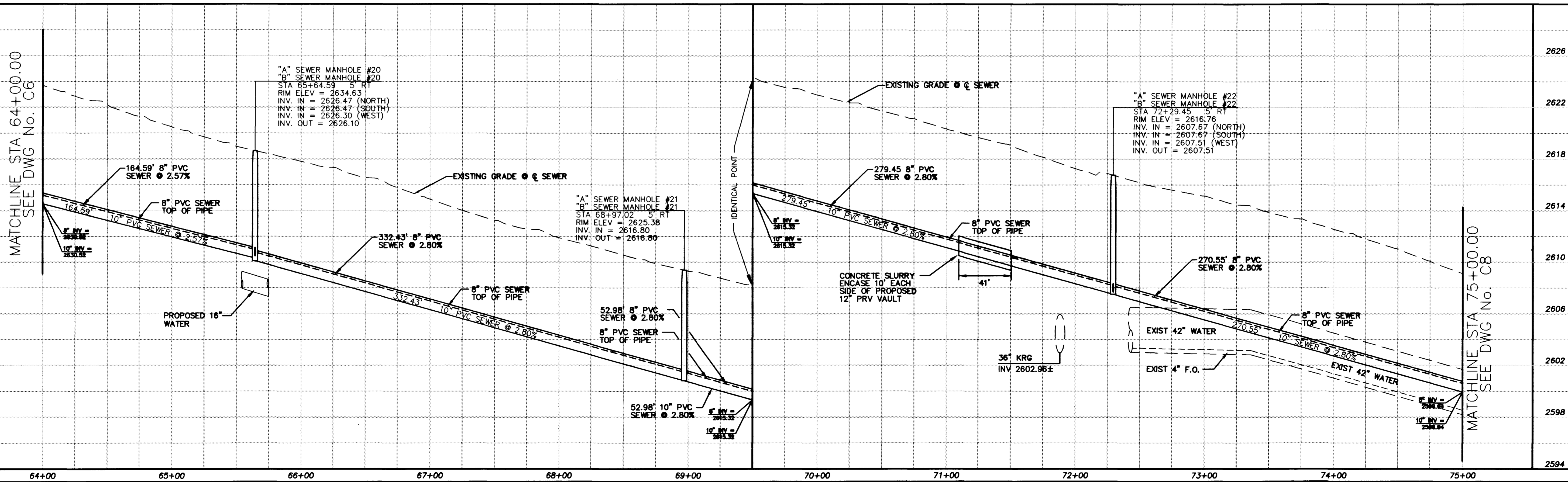
(FOR BIDDING PURPOSES ONLY)

NOTE:
ALL EXISTING UTILITY LOCATIONS SHOWN HEREON ARE APPROXIMATE ONLY. IT SHALL BE THE CONTRACTOR'S RESPONSIBILITY TO DETERMINE THE EXACT VERTICAL AND HORIZONTAL LOCATION OF ALL EXISTING UNDERGROUND UTILITIES PRIOR TO CONSTRUCTION AND RELOCATE THESE UTILITIES AS NECESSARY. NO REPRESENTATION IS MADE THAT ALL UTILITIES ARE SHOWN HEREON. THE ENGINEER ASSUMES NO LIABILITY FOR UTILITIES NOT SHOWN OR UTILITIES NOT SHOWN IN THEIR PROPER LOCATIONS.

Call before you Dig
1-800-227-2600

SCALE: HORIZ. 1"=40'
VERT. 1"=4'

MATCHLINE STA 64+00.00
SEE DWG No. C6



MATCHLINE STA 75+00.00
SEE DWG No. C8

REVISIONS

NO.	DATE	DESCRIPTION
1	10/1/98	Changed Pipe Size from 30" to 36"

DURANGO INTERCEPTOR SEWER
DESIGNED BY: J. LUSTIG
DATE: 8-31-98
DRAWN BY: J. ARROYO
JOB NO.: 51149

PBS
ENGINEERING PLANNING SURVEYING CONSTRUCTION SEWING
9011 N. Green Valley Pkwy.
Suite 100
Naselle, AZ 85024
Telephone: 702/263-7224
Fax: 702/263-7200

PROFESSIONAL ENGINEER - STATE OF NEVADA
L. ATWELL
No. 12117

Department of Public Works
DURANGO INTERCEPTOR SEWER
PLAN AND PROFILE
STA 64+00.00 TO STA 75+00.00

CITY OF LAS VEGAS
NEVADA

DRAWING No. 12
C7

