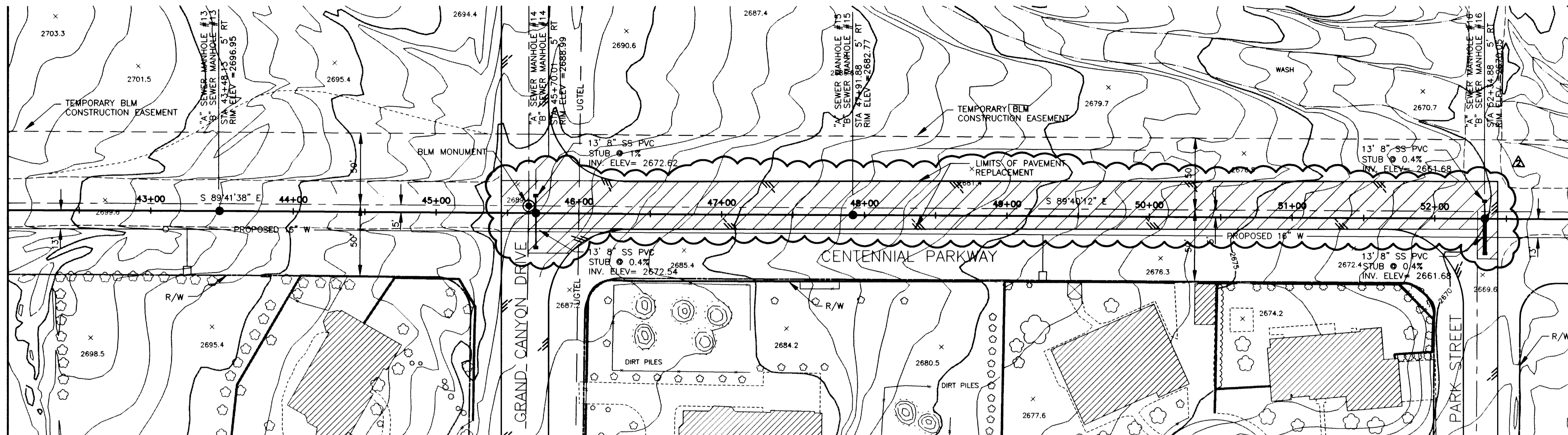


MATCHLINE STA 42+00.00  
SEE DWG No. C4



MATCHLINE STA 53+00.00  
SEE DWG No. C6



**SANITARY SEWER ALTERNATIVES**

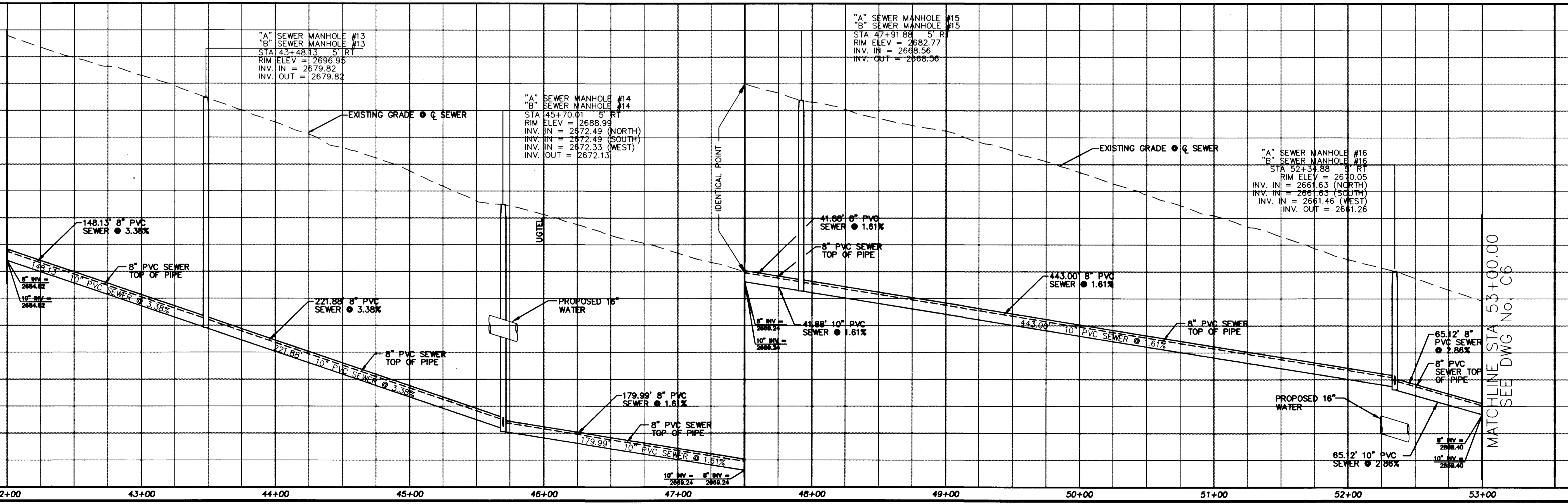
ALT "A" - 8" SEWER STA	1+03.75 TO STA	18+80.47
10" SEWER STA	18+80.47 TO STA	98+90.83
27" SEWER STA	98+90.83 TO STA	125+20.39
30" SEWER STA	125+20.39 TO STA	156+66.01
36" SEWER STA	156+66.01 TO STA	190+44.26
ALT "B" - 8" SEWER STA	1+03.75 TO STA	190+44.26

(FOR BIDDING PURPOSES ONLY)

**NOTE:**  
ALL EXISTING UTILITY LOCATIONS SHOWN HEREON ARE APPROXIMATE ONLY. IT SHALL BE THE CONTRACTOR'S RESPONSIBILITY TO DETERMINE THE EXACT VERTICAL AND HORIZONTAL LOCATION OF ALL EXISTING UNDERGROUND UTILITIES PRIOR TO CONSTRUCTION AND RELOCATE THESE UTILITIES AS NECESSARY. NO REPRESENTATION IS MADE THAT ALL UTILITIES ARE SHOWN HEREON. THE ENGINEER ASSUMES NO LIABILITY FOR UTILITIES NOT SHOWN OR UTILITIES NOT SHOWN IN THEIR PROPER LOCATIONS.

SCALE: HORIZ. 1"=40'  
VERT. 1"=4'  
Call before you Dig  
1-800-227-2600

MATCHLINE STA 42+00.00  
SEE DWG No. C4



MATCHLINE STA 53+00.00  
SEE DWG No. C6

**REVISIONS**

NO.	DATE	DESCRIPTION
1	10/7/06	Changed Pipe Size from 30" to 36"
2	10/7/06	Extended Limits of Pavement Replacement

**DURANGO INTERCEPTOR SEWER**  
DRAWN BY: J. LUSTIG  
CHECKED BY: L. ANWELL  
DATE: 8-31-98  
JOB NO: 51449

**PBSJ**  
ENGINEERING, PLANNING, SURVEYING, CONSTRUCTION SERVICES

10/2/06

**PROFESSIONAL ENGINEER - STATE OF NEVADA**  
LOUIS A. ANWELL  
No. 12112

Department of Public Works  
**DURANGO INTERCEPTOR SEWER  
PLAN AND PROFILE**  
STA 42+00.00 TO STA 53+00.00

**CITY OF LAS VEGAS  
NEVADA**

DRAWING No. 10  
C5

