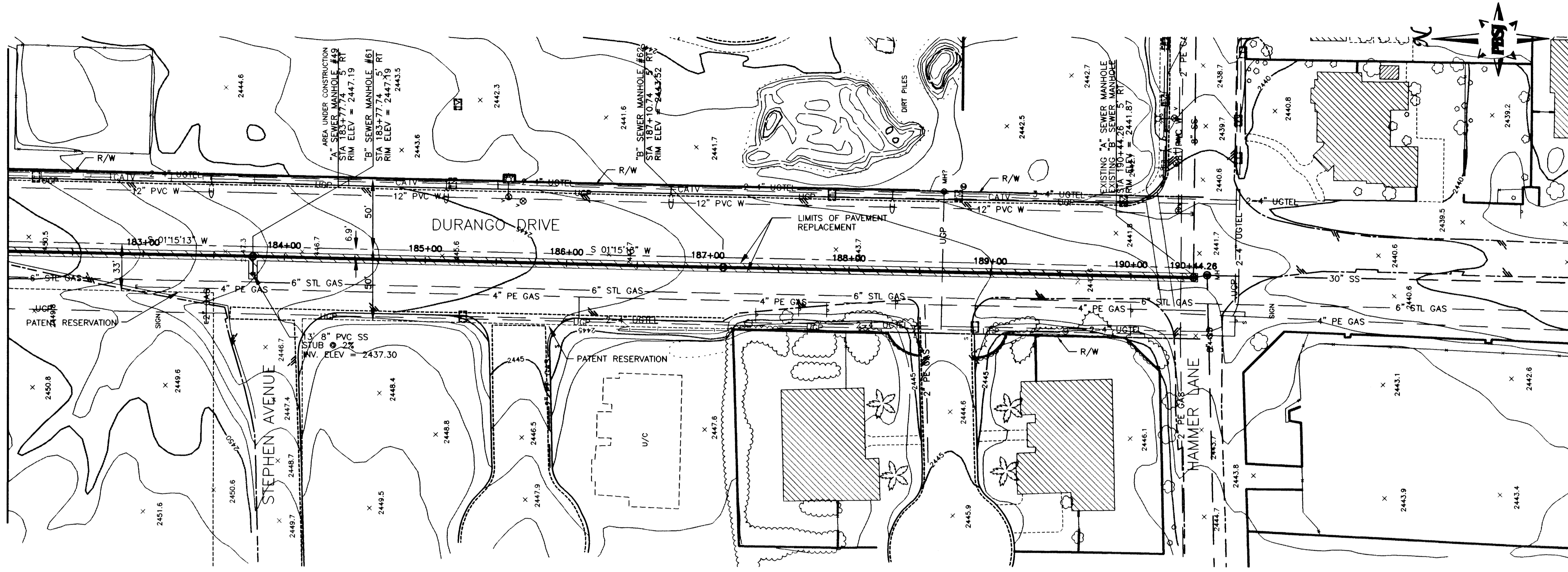


MATCHLINE STA 182+00.00  
SEE DWG No. C17



**SANITARY SEWER ALTERNATIVES**

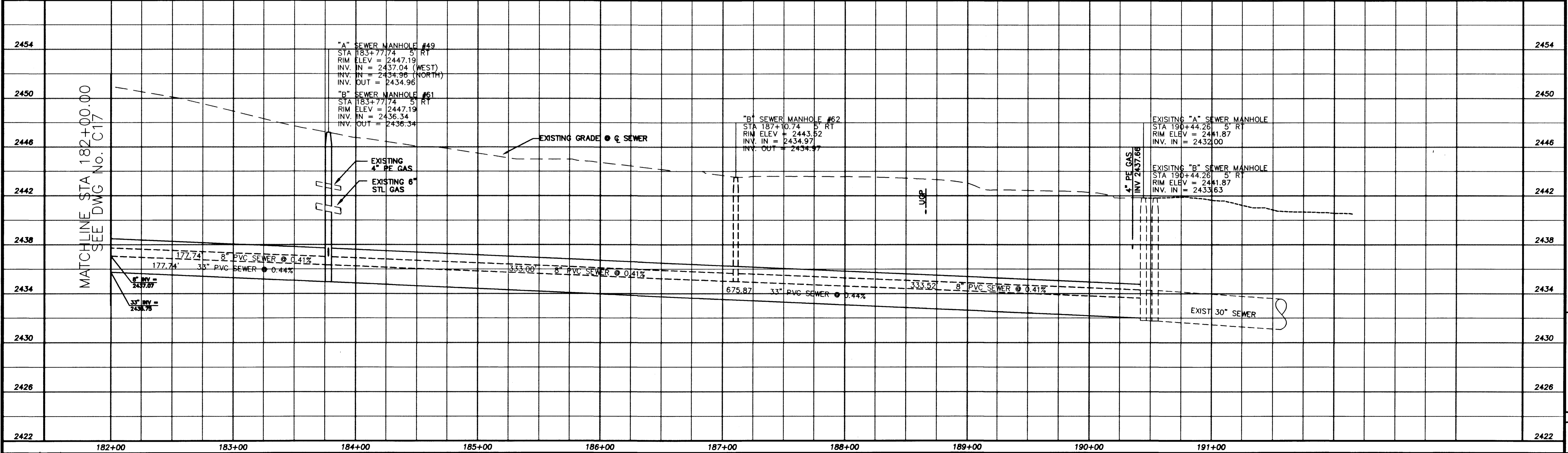
ALT "A" - 8" SEWER STA 1+03.75 TO STA 18+80.47
10" SEWER STA 18+80.47 TO STA 98+90.83
27" SEWER STA 98+90.83 TO STA 125+20.39
30" SEWER STA 125+20.39 TO STA 156+66.01
33" SEWER STA 156+66.01 TO STA 190+44.26
ALT "B" - 8" SEWER STA 1+03.75 TO STA 190+44.26
(FOR BIDDING PURPOSES ONLY)

**NOTE:**  
ALL EXISTING UTILITY LOCATIONS SHOWN HEREON ARE APPROXIMATE ONLY. IT SHALL BE THE CONTRACTOR'S RESPONSIBILITY TO DETERMINE THE EXACT VERTICAL AND HORIZONTAL LOCATION OF ALL EXISTING UNDERGROUND UTILITIES PRIOR TO CONSTRUCTION AND RELOCATE THESE UTILITIES AS NECESSARY. NO REPRESENTATION IS MADE THAT ALL UTILITIES ARE SHOWN HEREON. THE ENGINEER ASSUMES NO LIABILITY FOR UTILITIES NOT SHOWN OR UTILITIES NOT SHOWN IN THEIR PROPER LOCATIONS.

SCALE: HORIZ. 1"=40'  
VERT. 1"=4'

Call before you Dig  
1-800-227-2600

MATCHLINE STA 182+00.00  
SEE DWG No. C17



182+00 183+00 184+00 185+00 186+00 187+00 188+00 189+00 190+00 191+00

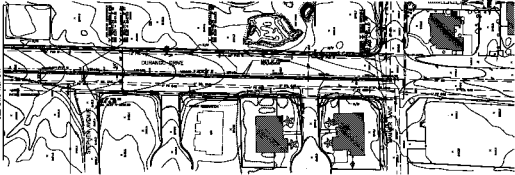
<p><b>DURANGO INTERCEPTOR SEWER</b> DRAWN BY: J. ARROYO DESIGNED BY: J. LUSTIG CHECKED BY: L. ATWELL</p>	
<p>DATE: 8-31-98 JOB NO.: 511449</p>	<p>NO. DATE DESCRIPTION</p>
<p>REVISIONS</p>	
<p>Department of Public Works <b>DURANGO INTERCEPTOR SEWER PLAN AND PROFILE STA 182+00.00 TO STA 190+44.26</b></p>	
<p>CITY OF LAS VEGAS NEVADA</p>	
<p>DRAWING No. 23 C18</p>	<p>26</p>

10436 10227

\* THIS SHEET HAS BEEN REPLOTTED

307-V170

MATCHLINE STA. 180+00.00  
SEE SHEET No. 177

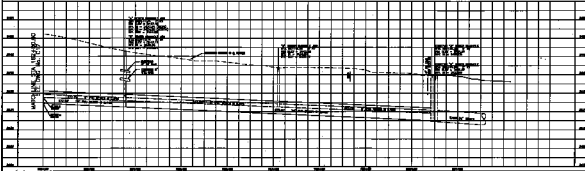


SPECIAL SYMBOLS & NOTATIONS	
1" = 10'	1" = 10'
2" = 20'	2" = 20'
3" = 30'	3" = 30'
4" = 40'	4" = 40'
5" = 50'	5" = 50'
6" = 60'	6" = 60'
7" = 70'	7" = 70'
8" = 80'	8" = 80'
9" = 90'	9" = 90'
10" = 100'	10" = 100'

NOTES	
1.	SEE SHEET No. 176 FOR PREVIOUS STATIONING
2.	SEE SHEET No. 178 FOR SUBSEQUENT STATIONING
3.	SEE SHEET No. 177 FOR PREVIOUS STATIONING
4.	SEE SHEET No. 179 FOR SUBSEQUENT STATIONING
5.	SEE SHEET No. 176 FOR PREVIOUS STATIONING
6.	SEE SHEET No. 178 FOR SUBSEQUENT STATIONING
7.	SEE SHEET No. 177 FOR PREVIOUS STATIONING
8.	SEE SHEET No. 179 FOR SUBSEQUENT STATIONING
9.	SEE SHEET No. 176 FOR PREVIOUS STATIONING
10.	SEE SHEET No. 178 FOR SUBSEQUENT STATIONING
11.	SEE SHEET No. 177 FOR PREVIOUS STATIONING
12.	SEE SHEET No. 179 FOR SUBSEQUENT STATIONING
13.	SEE SHEET No. 176 FOR PREVIOUS STATIONING
14.	SEE SHEET No. 178 FOR SUBSEQUENT STATIONING
15.	SEE SHEET No. 177 FOR PREVIOUS STATIONING
16.	SEE SHEET No. 179 FOR SUBSEQUENT STATIONING
17.	SEE SHEET No. 176 FOR PREVIOUS STATIONING
18.	SEE SHEET No. 178 FOR SUBSEQUENT STATIONING
19.	SEE SHEET No. 177 FOR PREVIOUS STATIONING
20.	SEE SHEET No. 179 FOR SUBSEQUENT STATIONING

1" = 100'  
1" = 100'

MATCHLINE STA. 185+00.00  
SEE SHEET No. 178



Department of Public Works  
BUBANCO INTERCEPTOR SEWER  
PLAN AND PROFILE  
STA 185-00.00 TO STA 190+44.00



SUBVISIONS

NO.	DESCRIPTION	DATE