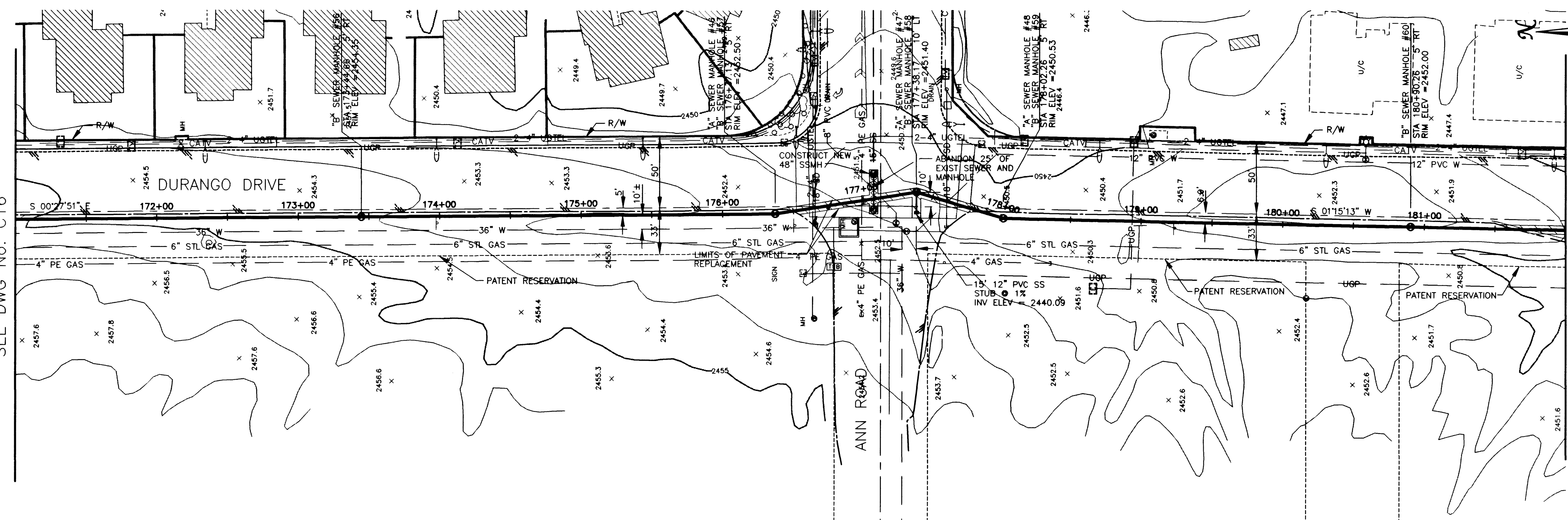


MATCHLINE STA 171+00.00  
SEE DWG No. C16

MATCHLINE STA 182+00.00  
SEE DWG No. C18



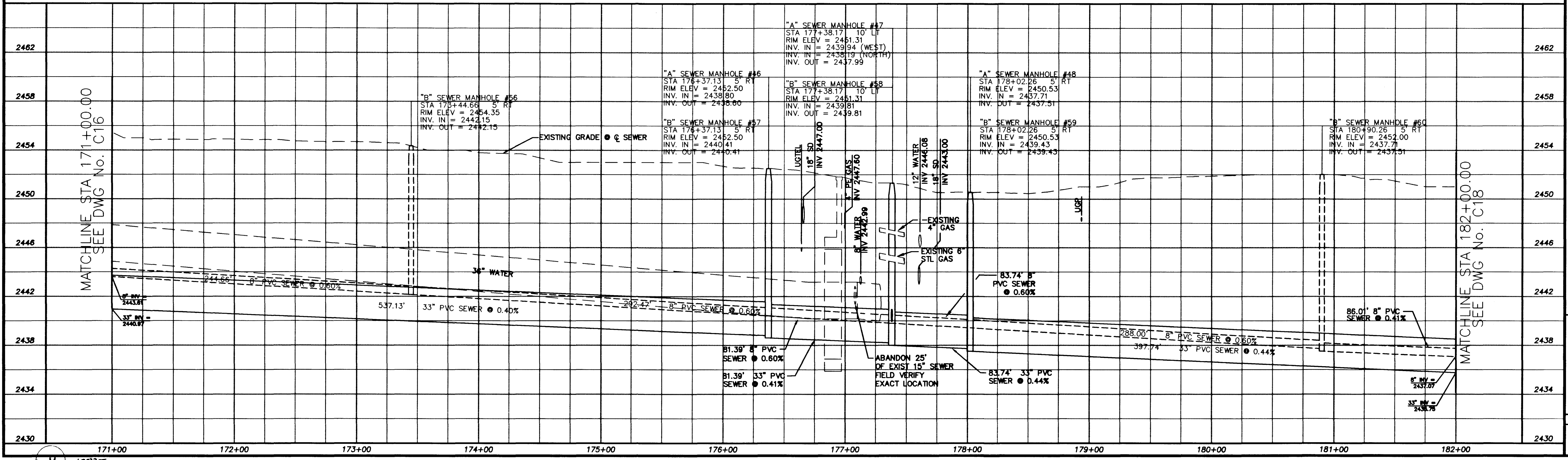
**SANITARY SEWER ALTERNATIVES**

ALT "A" - 8" SEWER STA	1+03.75 TO STA	18+80.47
10" SEWER STA	18+80.47 TO STA	98+90.83
27" SEWER STA	98+90.83 TO STA	125+20.39
30" SEWER STA	125+20.39 TO STA	156+66.01
33" SEWER STA	156+66.01 TO STA	190+44.26
ALT "B" - 8" SEWER STA	1+03.75 TO STA	190+44.26
(FOR BIDDING PURPOSES ONLY)		

**NOTE:**  
ALL EXISTING UTILITY LOCATIONS SHOWN HEREON ARE APPROXIMATE ONLY. IT SHALL BE THE CONTRACTOR'S RESPONSIBILITY TO DETERMINE THE EXACT VERTICAL AND HORIZONTAL LOCATION OF ALL EXISTING UNDERGROUND UTILITIES PRIOR TO CONSTRUCTION AND RELOCATE THESE UTILITIES AS NECESSARY. NO REPRESENTATION IS MADE THAT ALL UTILITIES ARE SHOWN HEREON. THE ENGINEER ASSUMES NO LIABILITY FOR UTILITIES NOT SHOWN OR UTILITIES NOT SHOWN IN THEIR PROPER LOCATIONS.

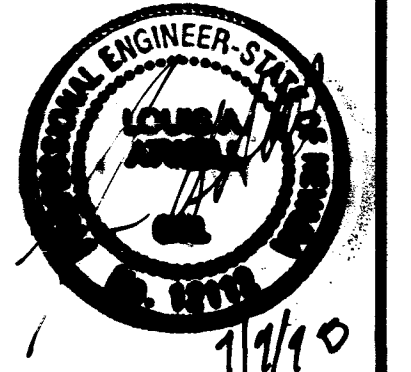
SCALE: HORIZ. 1"=40'  
VERT. 1"=4'

Call before you Dig  
1-800-227-2600



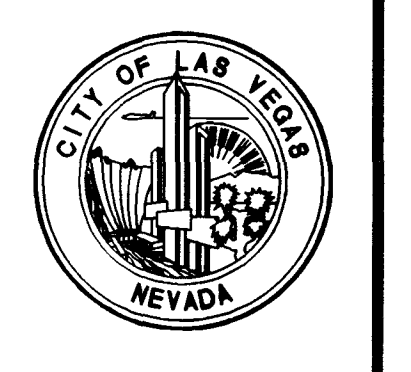
**REVISIONS**

NO.	DATE	DESCRIPTION



**DURANGO INTERCEPTOR SEWER**  
DESIGNED BY: J. LUSTIG  
CHECKED BY: L. ATWELL  
DATE: 8-31-98  
JOB NO.: 51449  
**PBSJ**  
ENGINEERING, PLANNING, SURVEYING, CONSTRUCTION SERVICES  
301 N. Green Valley Pkwy.  
Reno, NV 89509  
PHONE: 775-785-7275  
FAX: 775-785-7280

Department of Public Works  
**DURANGO INTERCEPTOR SEWER**  
PLAN AND PROFILE  
STA 171+00.00 TO STA 182+00.00



DRAWING No. 22  
C17

