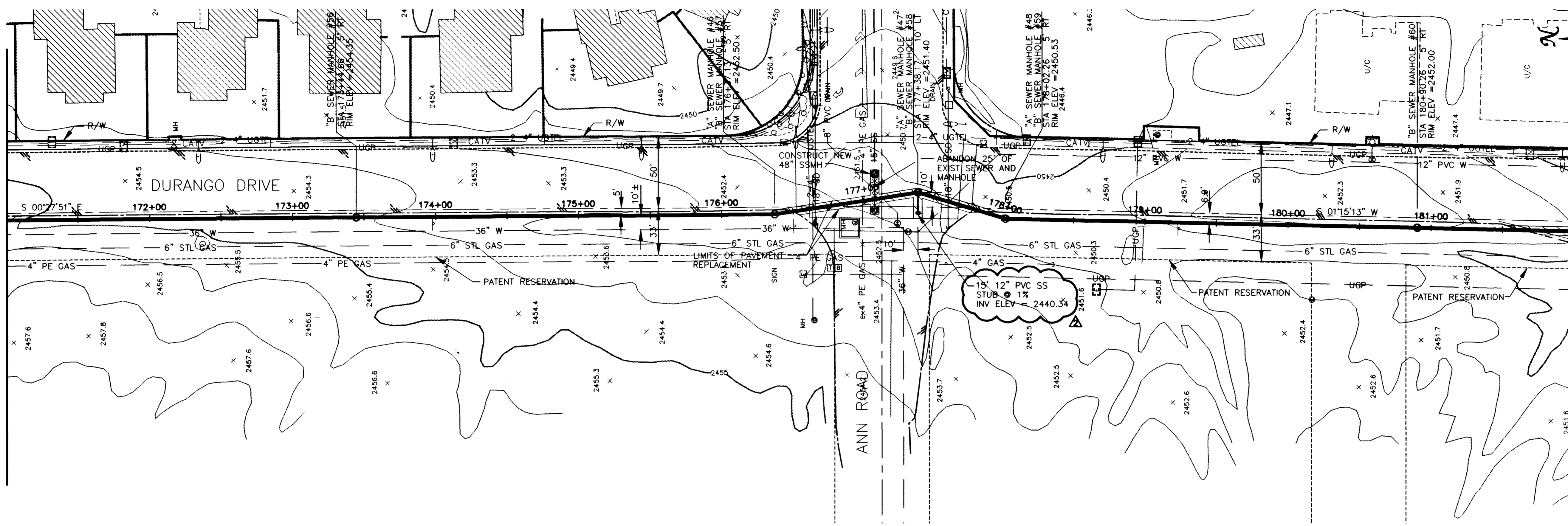
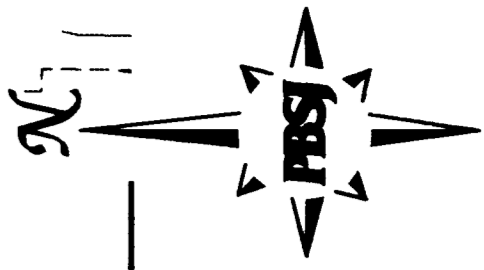


MATCHLINE STA 171+00.00  
SEE DWG No. C16

MATCHLINE STA 182+00.00  
SEE DWG No. C18



**SANITARY SEWER ALTERNATIVES**

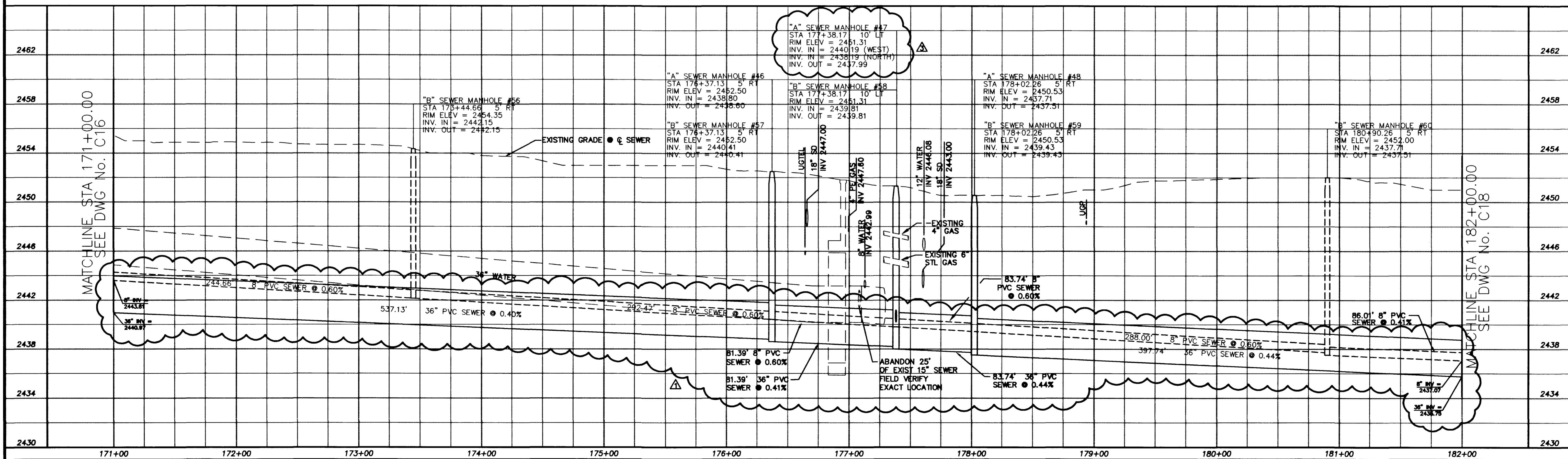
ALT "A" - 8" SEWER STA 1+03.75 TO STA 18+80.47  
 10" SEWER STA 18+80.47 TO STA 98+90.63  
 27" SEWER STA 98+90.63 TO STA 125+20.39  
 30" SEWER STA 125+20.39 TO STA 156+66.01  
 36" SEWER STA 156+66.01 TO STA 190+44.26

ALT "B" - 8" SEWER STA 1+03.75 TO STA 190+44.26  
 (FOR BIDDING PURPOSES ONLY)

**NOTE:**  
 ALL EXISTING UTILITY LOCATIONS SHOWN HEREON ARE APPROXIMATE ONLY. IT SHALL BE THE CONTRACTOR'S RESPONSIBILITY TO DETERMINE THE EXACT VERTICAL AND HORIZONTAL LOCATION OF ALL EXISTING UNDERGROUND UTILITIES PRIOR TO CONSTRUCTION AND RELOCATE THESE UTILITIES AS NECESSARY. NO REPRESENTATION IS MADE THAT ALL UTILITIES ARE SHOWN HEREON. THE ENGINEER ASSUMES NO LIABILITY FOR UTILITIES NOT SHOWN OR UTILITIES NOT SHOWN IN THEIR PROPER LOCATIONS.

SCALE: HORIZ. 1"=40'  
 VERT. 1"=4'

Call before you Dig  
 1-800-227-2600



**REVISIONS**

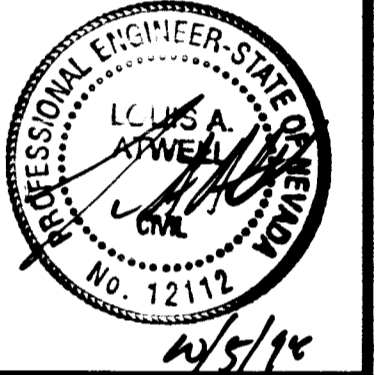
NO.	DATE	DESCRIPTION
1	10/7/98	Change Pipe Size from 30" to 36"
2	10/7/98	Change Manhole Invert to 2440.19
3	10/7/98	Change Manhole Invert to 2440.19
4	10/7/98	Change Manhole Invert to 2440.19

**DURANGO INTERCEPTOR SEWER**

DESIGNED BY: J. ARROYO  
 CHECKED BY: J. LUSTIG  
 DATE: 8-31-98

JOB NO.: 51149

**PBSJ**  
 PROFESSIONAL ENGINEERING FIRM  
 301 N. Green Valley Hwy.  
 Henderson, NV 89002-7024  
 Phone: 702/263-7200  
 Fax: 702/263-7200



Department of Public Works  
**DURANGO INTERCEPTOR SEWER  
 PLAN AND PROFILE**  
 STA 171+00.00 TO STA 182+00.00

**CITY OF LAS VEGAS**

DRAWING No. **C17**

22  
26

