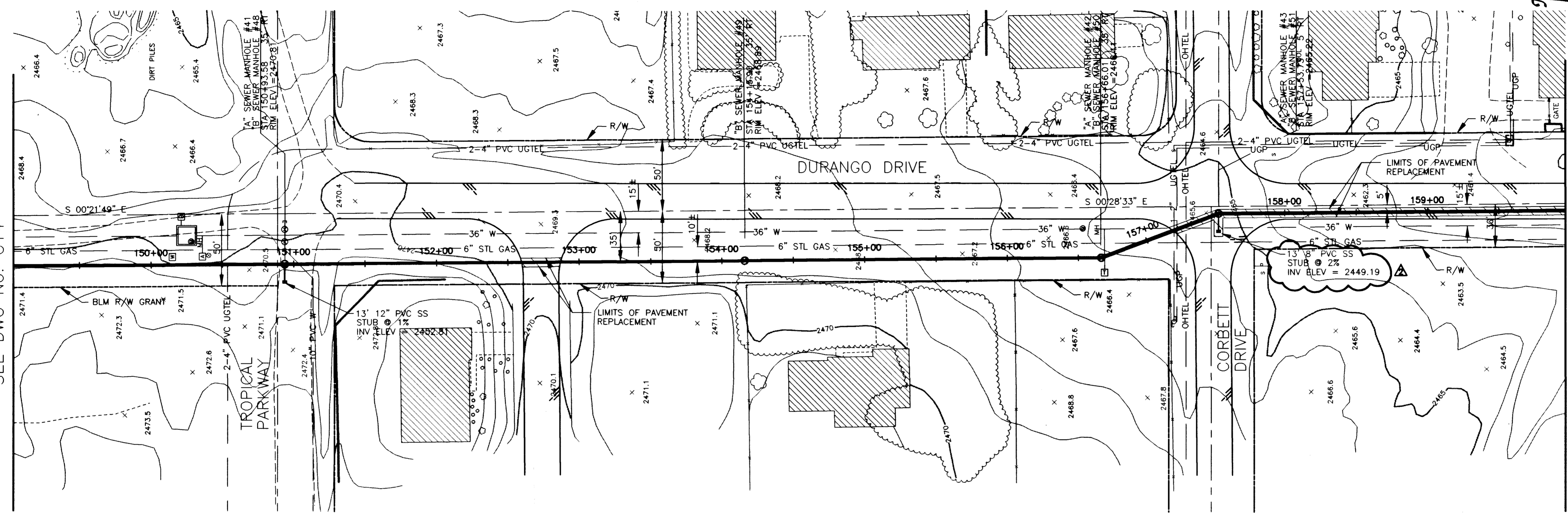


MATCHLINE STA 149+00.00
SEE DWG No. C14



MATCHLINE STA 160+00.00
SEE DWG No. C16

SANITARY SEWER ALTERNATIVES

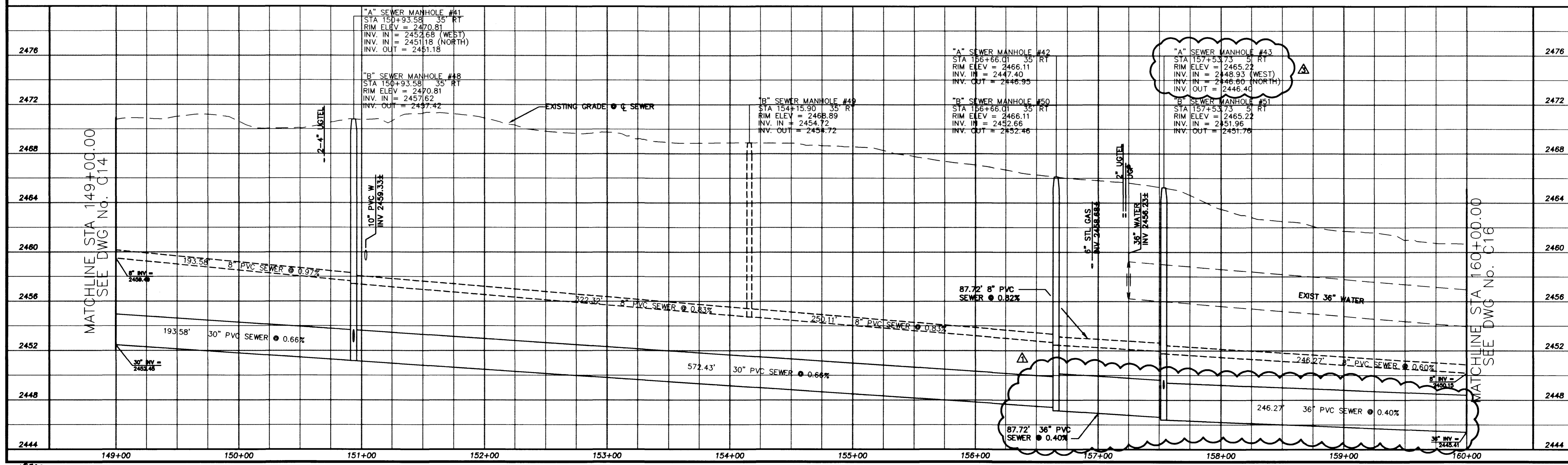
ALT "A" - 8" SEWER STA 1+03.75 TO STA 18+80.47
10" SEWER STA 18+80.47 TO STA 98+90.83
27" SEWER STA 98+90.83 TO STA 125+20.39
30" SEWER STA 125+20.39 TO STA 156+66.01
36" SEWER STA 156+66.01 TO STA 190+44.26
ALT "B" - 8" SEWER STA 1+03.75 TO STA 190+44.26 (FOR BIDDING PURPOSES ONLY)

NOTE:
ALL EXISTING UTILITY LOCATIONS SHOWN HEREON ARE APPROXIMATE ONLY. IT SHALL BE THE CONTRACTOR'S RESPONSIBILITY TO DETERMINE THE EXACT VERTICAL AND HORIZONTAL LOCATION OF ALL EXISTING UNDERGROUND UTILITIES PRIOR TO CONSTRUCTION AND RELOCATE THESE UTILITIES AS NECESSARY. NO REPRESENTATION IS MADE THAT ALL UTILITIES ARE SHOWN HEREON. THE ENGINEER ASSUMES NO LIABILITY FOR UTILITIES NOT SHOWN OR UTILITIES NOT SHOWN IN THEIR PROPER LOCATIONS.

SCALE: HORIZ. 1"=40'
VERT. 1"=4'

Call before you OVERHEAD
1-702-593-6111

Call before you Dig
1-800-227-2800



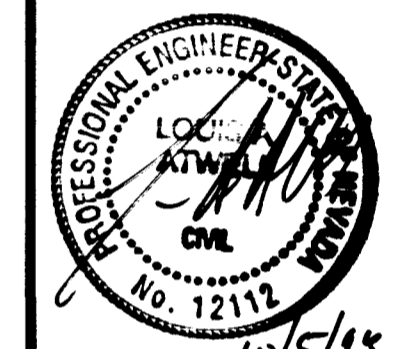
REVISIONS

NO.	DATE	DESCRIPTION
1	10/17/08	Change Pipe Size from 36" to 30"
2	10/17/08	Change Pipe Size from 30" to 24" from STA 148.84 to STA 149.18
3	10/17/08	Change Head Invert in Elevation from 2448.80 to 2448.85

DURANGO INTERCEPTOR SEWER
DRAWN BY: J. ARROYO
DESIGNED BY: J. LUSTIG
CHECKED BY: L. ATWELL
DATE: 8-31-08
JOB NO.: 511449

PBSJ
90 N. Green Valley Pkwy.
Suite 300
Las Vegas, NV 89121
Telephone: 702.266.7274
Fax: 702.266.7200

ENGINEERING: PLANNING - SURVEYING - CONSTRUCTION SERVICES

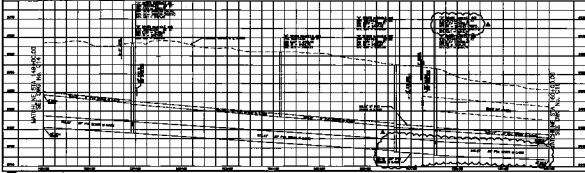


Department of Public Works
**DURANGO INTERCEPTOR SEWER
PLAN AND PROFILE**
STA 149+00.00 TO STA 160+00.00



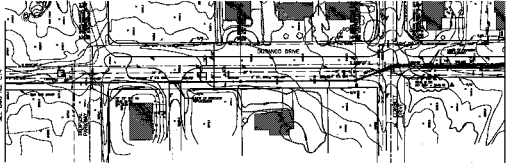
DRAWING No. 20
C15 26

MATHELINE STA. 148+00.00
SEE SHEET NO. 014



MATHELINE STA. 150+00.00
SEE SHEET NO. 014

MATHELINE STA. 148+00.00
SEE SHEET NO. 014



MATHELINE STA. 150+00.00
SEE SHEET NO. 014



NOTES

1. THE PLAN AND PROFILE VIEWS ARE TO BE CONSIDERED AS ONE.
2. THE SEWER LINE SHALL BE CONSTRUCTED TO THE CENTERLINE OF THE DRIVE.
3. THE SEWER LINE SHALL BE CONSTRUCTED TO THE CENTERLINE OF THE DRIVE.
4. THE SEWER LINE SHALL BE CONSTRUCTED TO THE CENTERLINE OF THE DRIVE.
5. THE SEWER LINE SHALL BE CONSTRUCTED TO THE CENTERLINE OF THE DRIVE.
6. THE SEWER LINE SHALL BE CONSTRUCTED TO THE CENTERLINE OF THE DRIVE.
7. THE SEWER LINE SHALL BE CONSTRUCTED TO THE CENTERLINE OF THE DRIVE.
8. THE SEWER LINE SHALL BE CONSTRUCTED TO THE CENTERLINE OF THE DRIVE.
9. THE SEWER LINE SHALL BE CONSTRUCTED TO THE CENTERLINE OF THE DRIVE.
10. THE SEWER LINE SHALL BE CONSTRUCTED TO THE CENTERLINE OF THE DRIVE.

1" = 40' HORIZONTAL
1" = 4' VERTICAL

OVERHEAD

1" = 40' HORIZONTAL
1" = 4' VERTICAL

Department of Public Works
DURANGO INTERCEPTOR SEWER
PLAN AND PROFILE
STA 148+00.00 TO STA 150+00.00



REVISIONS

NO.	DATE	DESCRIPTION
1	10/1/00	ISSUED FOR BIDDING
2	10/1/00	ISSUED FOR BIDDING
3	10/1/00	ISSUED FOR BIDDING
4	10/1/00	ISSUED FOR BIDDING
5	10/1/00	ISSUED FOR BIDDING
6	10/1/00	ISSUED FOR BIDDING
7	10/1/00	ISSUED FOR BIDDING
8	10/1/00	ISSUED FOR BIDDING
9	10/1/00	ISSUED FOR BIDDING
10	10/1/00	ISSUED FOR BIDDING