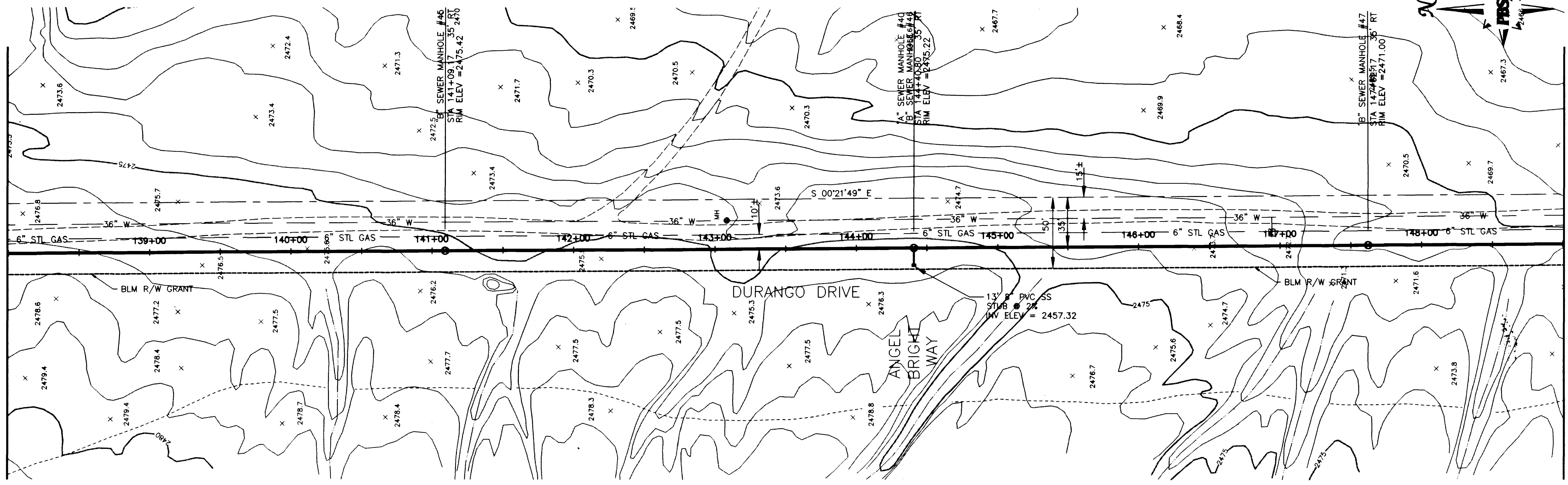


MATCHLINE STA 138+00.00  
SEE DWG No. C13



MATCHLINE STA 149+00.00  
SEE DWG No. C15

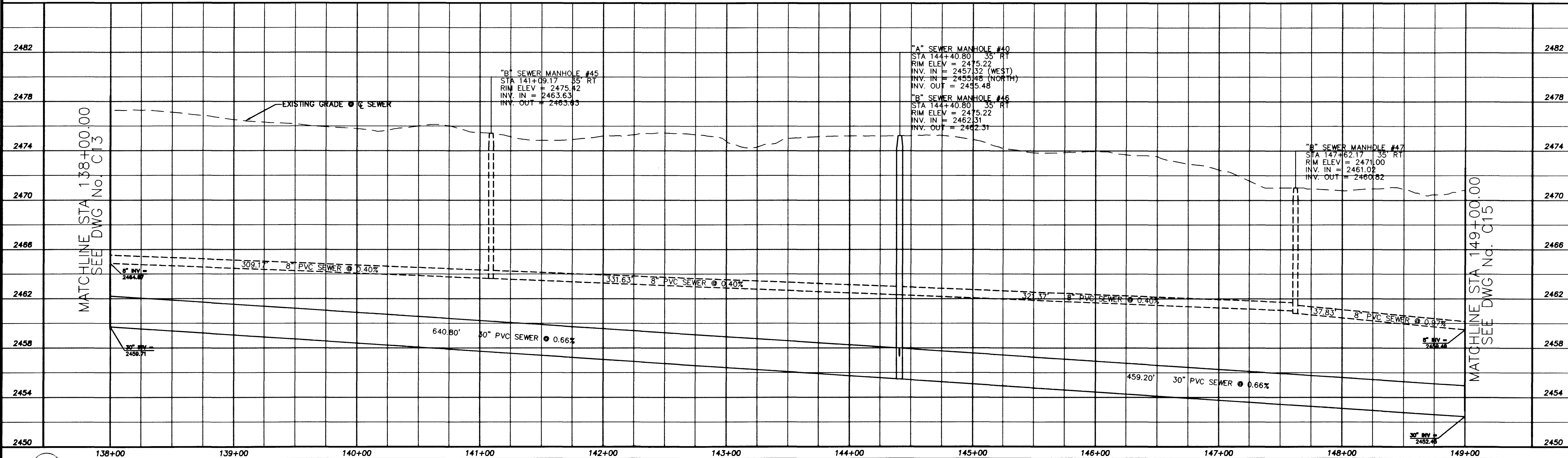
**SANITARY SEWER ALTERNATIVES**

ALT "A" - 8" SEWER STA	1+03.75 TO STA	18+80.47
10" SEWER STA	18+80.47 TO STA	98+90.83
27" SEWER STA	98+90.83 TO STA	125+20.39
30" SEWER STA	125+20.39 TO STA	156+66.01
36" SEWER STA	156+66.01 TO STA	190+44.26
ALT "B" - 8" SEWER STA	1+03.75 TO STA	190+44.26
(FOR BIDDING PURPOSES ONLY)		

**NOTE:**  
ALL EXISTING UTILITY LOCATIONS SHOWN HEREON ARE APPROXIMATE ONLY. IT SHALL BE THE CONTRACTOR'S RESPONSIBILITY TO DETERMINE THE EXACT VERTICAL AND HORIZONTAL LOCATION OF ALL EXISTING UNDERGROUND UTILITIES PRIOR TO CONSTRUCTION AND RELOCATE THESE UTILITIES AS NECESSARY. NO REPRESENTATION IS MADE THAT ALL UTILITIES ARE SHOWN HEREON. THE ENGINEER ASSUMES NO LIABILITY FOR UTILITIES NOT SHOWN OR UTILITIES NOT SHOWN IN THEIR PROPER LOCATIONS.

SCALE: HORIZ. 1"=40'  
VERT. 1"=4'

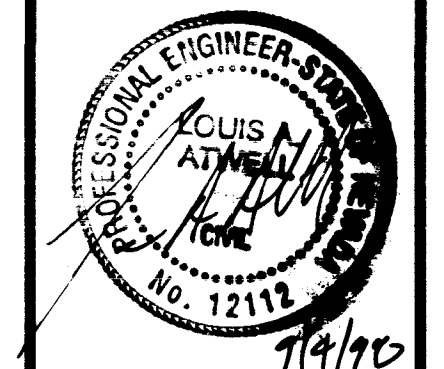
Call before you Dig  
1-800-227-2600



**REVISIONS**

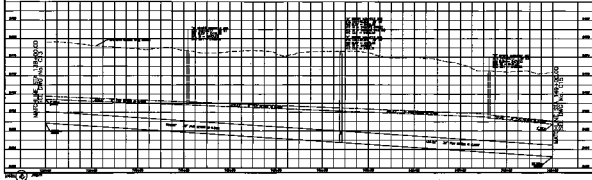
NO.	DATE	DESCRIPTION
1	10/17/98	Change Pipe Size from 36" to 30"

**DURANGO INTERCEPTOR SEWER**  
DRAWN BY: J. ARROYO  
CHECKED BY: L. ATWELL  
DESIGNED BY: J. LUSTIG  
DATE: 8-31-98  
JOB NO.: 511449  
PROJECT: 800 N. Green Valley Pkwy., Suite 100, Henderson, NV 89121  
PHONE: 702/253-8771  
FAC: 702/253-8780



Department of Public Works  
**DURANGO INTERCEPTOR SEWER  
PLAN AND PROFILE**  
STA 138+00.00 TO STA 149+00.00

CITY OF LAS VEGAS  
NEVADA  
DRAWING No. 19  
C14  
26



**PROPOSED SEWER**

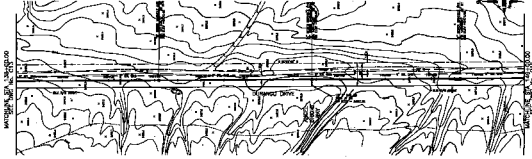
12"	1.00
15"	1.25
18"	1.50
21"	1.75
24"	2.00
27"	2.25
30"	2.50
36"	3.00
42"	3.50
48"	4.00
54"	4.50
60"	5.00

1. This drawing is a part of a contract for the construction of a sewer line. It is to be read in conjunction with the specifications and the contract documents.

2. The proposed sewer line is shown in dashed lines. The ground surface is shown in solid lines.

3. The manholes are shown with their respective elevations and diameters.

4. The sewer line is to be constructed in accordance with the specifications and the contract documents.



Department of Public Works  
BURRANCO INTERCEPTOR SEWER  
PLAN AND PROFILE  
STA 134+00.00 TO STA 149+00.00

10

REVISONS

NO.	DATE	DESCRIPTION

100