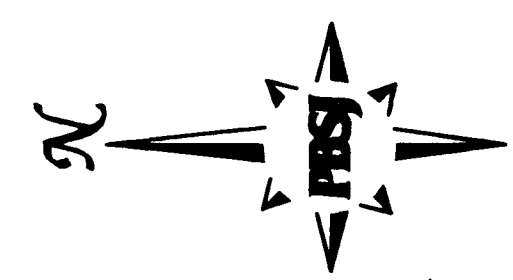
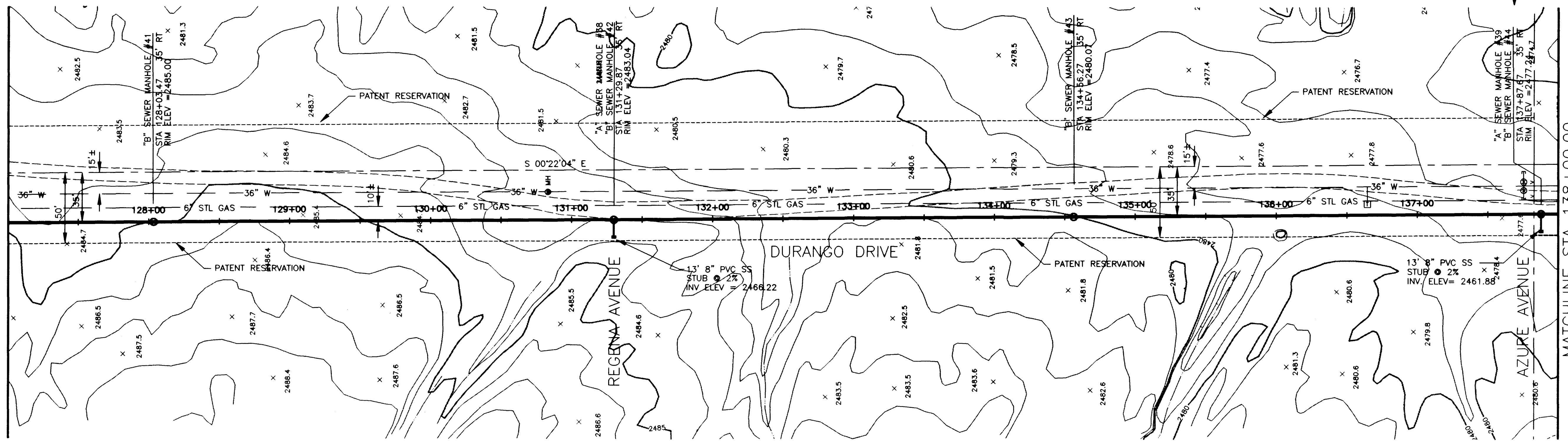


MATCHLINE STA 127+00.00
SEE DWG No. C12

MATCHLINE STA 138+00.00
SEE DWG No. C14



SANITARY SEWER ALTERNATIVES

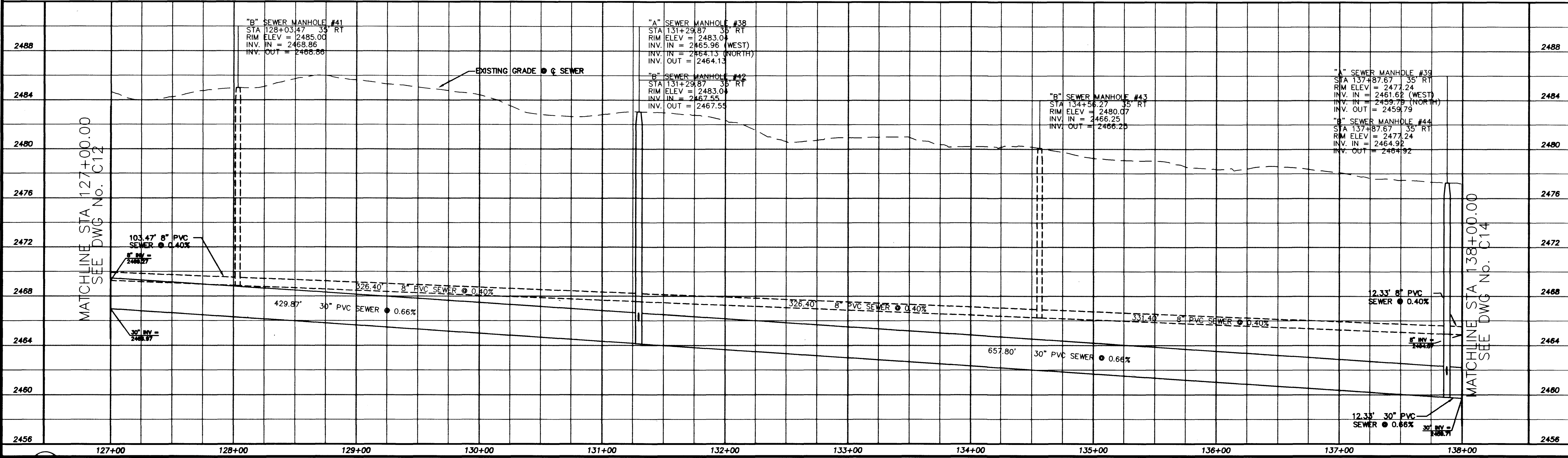
ALT "A" - 8" SEWER STA 1+03.75 TO STA 18+80.47
 10" SEWER STA 18+80.47 TO STA 98+90.83
 27" SEWER STA 98+90.83 TO STA 125+20.39
 30" SEWER STA 125+20.39 TO STA 156+66.01
 36" SEWER STA 156+66.01 TO STA 190+44.26

ALT "B" - 8" SEWER STA 1+03.75 TO STA 190+44.26
 (FOR BIDDING PURPOSES ONLY)

NOTE:
 ALL EXISTING UTILITY LOCATIONS SHOWN HEREON ARE APPROXIMATE ONLY. IT SHALL BE THE CONTRACTOR'S RESPONSIBILITY TO DETERMINE THE EXACT VERTICAL AND HORIZONTAL LOCATION OF ALL EXISTING UNDERGROUND UTILITIES PRIOR TO CONSTRUCTION AND RELOCATE THESE UTILITIES AS NECESSARY. NO REPRESENTATION IS MADE THAT ALL UTILITIES ARE SHOWN HEREON. THE ENGINEER ASSUMES NO LIABILITY FOR UTILITIES NOT SHOWN OR UTILITIES NOT SHOWN IN THEIR PROPER LOCATIONS.

SCALE: HORIZ. 1"=40'
 VERT. 1"=4'

Call before you Dig
 1-800-227-2600



REVISIONS

NO.	DATE	DESCRIPTION
1	10/1/98	Changed Pipe Size from 36" to 30"

DURANGO INTERCEPTOR SEWER
 DRAWN BY: J. LUSTIG
 CHECKED BY: L. ATWELL
 DATE: 10/1/98
 SCALE: B-31-98

PBSI
 501 N. Green Valley Hwy.
 Henderson, Nevada 89075
 PHONE: 702/279-7200
 ENGINEERING, PLANNING, SURVEYING, CONSTRUCTION SERVICES

APPROVED

Department of Public Works
 DURANGO INTERCEPTOR SEWER
 PLAN AND PROFILE
 STA 127+00.00 TO STA 138+00.00

CITY OF LAS VEGAS
 NEVADA

DRAWING No. 18
 C13

10431 10818

307-V170

