

Avoid overhead power line contact. **Call before you Overhead** 1-702-593-6111

Avoid cutting underground utility lines. It's costly. **Call before you Dig.** 1-800-227-2600

NEVADA POWER ENVIRONMENT AND SAFETY SERVICES DEPARTMENT UNDERGROUND SERVICE ALERT (USA)

DESIGNED BY: DRJ	DATE: 3/97
CHECKED BY: DRJ	BY: DATE
JOB NUMBER: 001700X	REVISION
NO.	

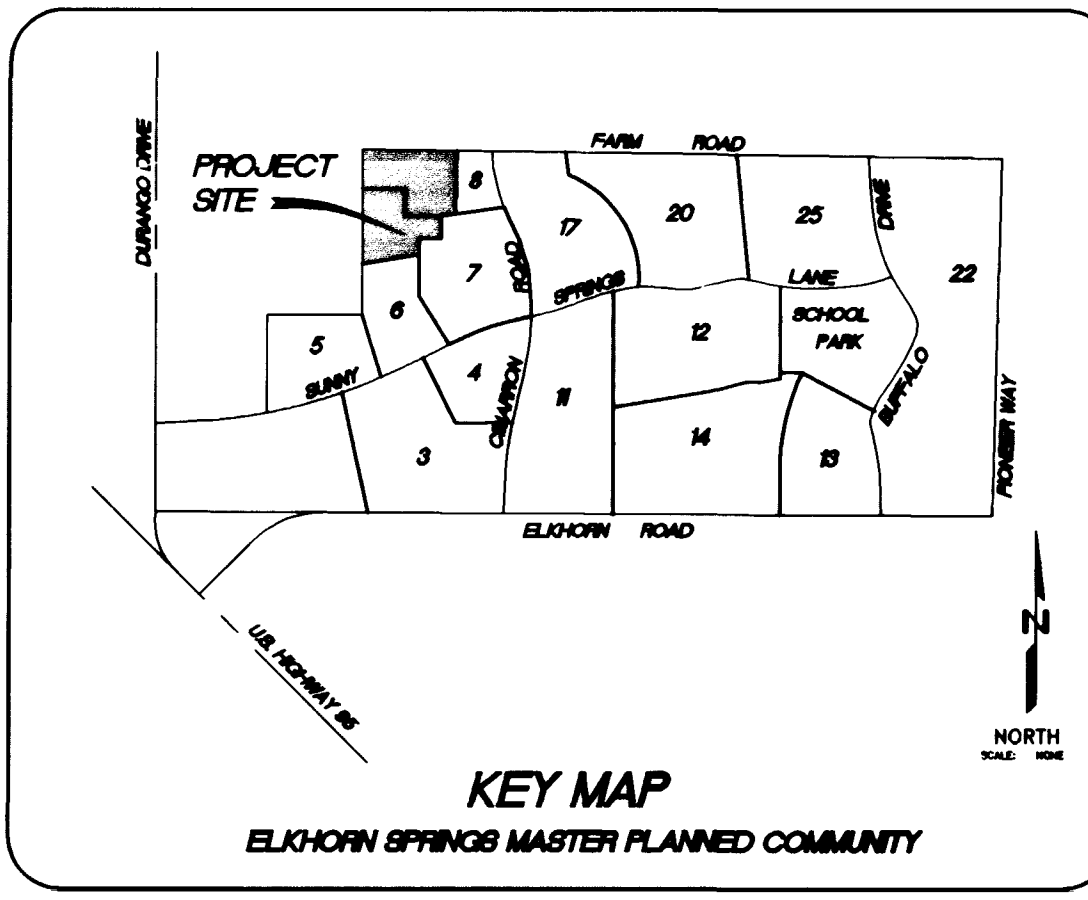
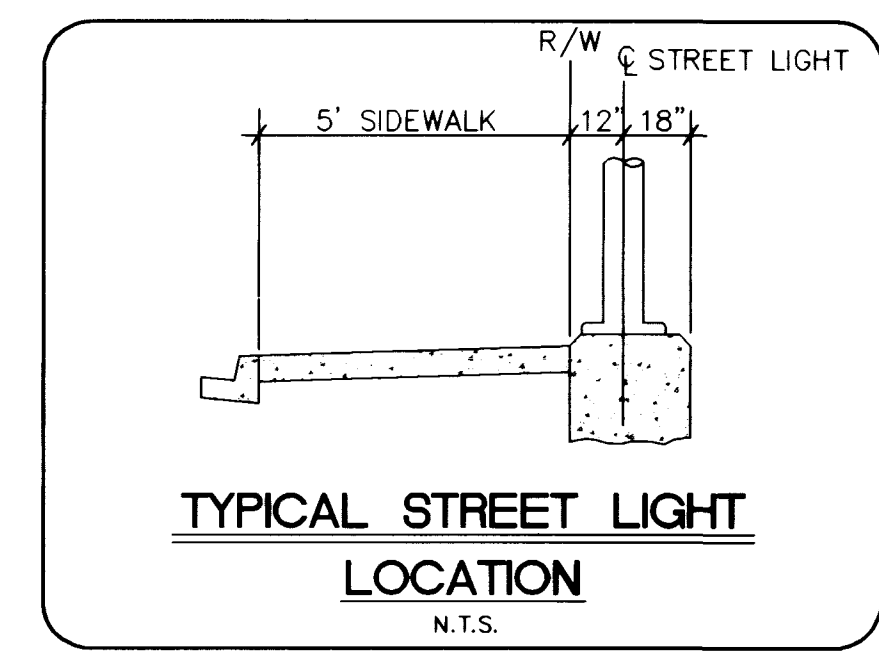
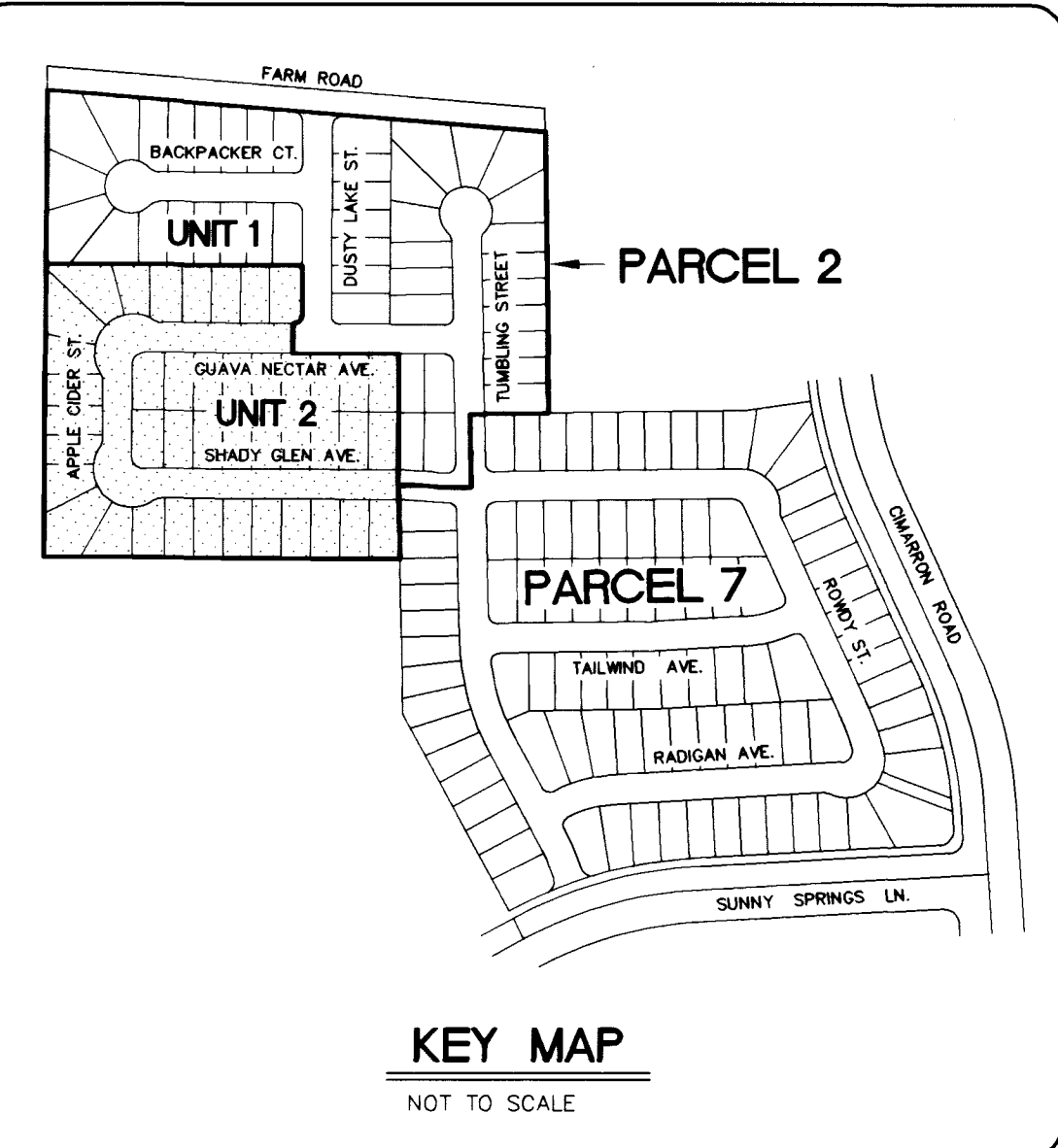
**LEGEND**

F.O.C.	FACE OF CURB
---	PROPOSED 1-1/4" PVC ST. LT. CONDUIT
---	EXIST. 1-1/4" PVC ST. LT. CONDUIT
L	STREET NAME SIGN
●	STOP SIGN R1-1
○	PROPOSED STREET LIGHT
○	EXISTING STREET LIGHT
▒	SIGHT VISIBILITY RESTRICTION EASEMENT (SEE FINAL MAP)

**UNIT 2 QUANTITIES**

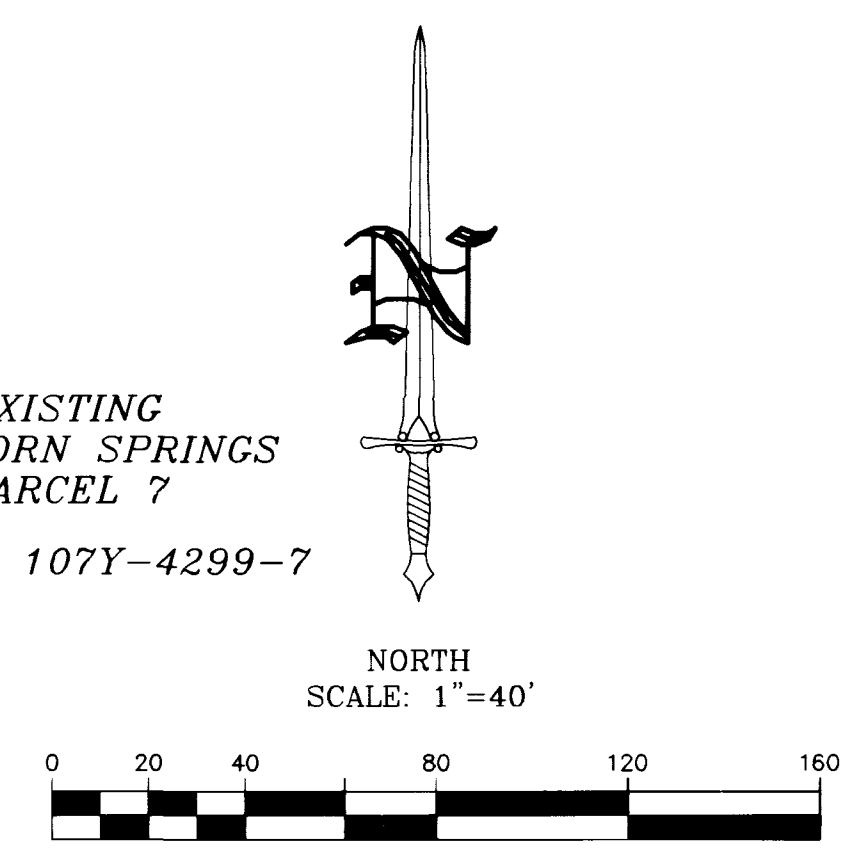
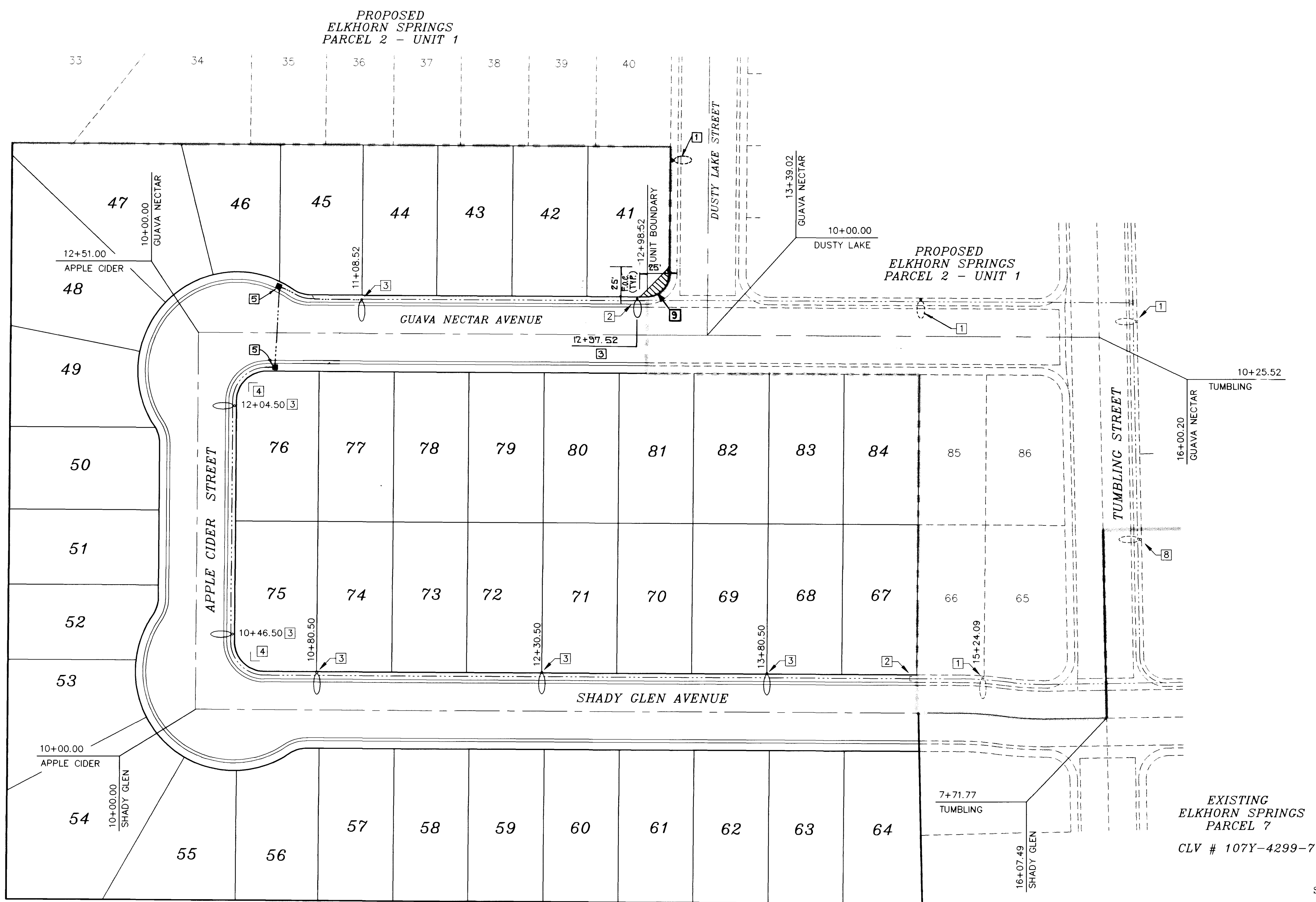
ITEM	QUANTITY
STREET NAME SIGN	2 EA
100W HPS STREET LIGHT	7 EA

**NOTE TO CONTRACTOR:**  
QUANTITIES SHOWN ARE APPROXIMATIONS ONLY AND ARE INTENDED TO ILLUSTRATE SCOPE OF WORK. THE CONTRACTOR SHALL BE RESPONSIBLE FOR VERIFYING THE EXACT QUANTITIES.



- GENERAL NOTES**
- CONTRACTOR TO VERIFY LOCATIONS OF ALL WALLS PRIOR TO CONSTRUCTION.
  - EXISTING TRAFFIC CONTROL APPURTENANCES ARE PER "IMPROVEMENT PLANS FOR ELKHORN SPRINGS - PARCEL 2 - UNIT 1" AND "IMPROVEMENT PLANS FOR ELKHORN SPRINGS - PARCEL 7" BY ORION ENGINEERING AND SURVEYING, INC.

- CONSTRUCTION NOTES**
- EXISTING 100W HPS STREETLIGHT PER "UNIT 1"
  - CONNECT TO EXISTING CONDUIT
  - INSTALL 100W HPS STREETLIGHT
  - INSTALL STREET NAME SIGN
  - INSTALL 3-1/2" PULLBOX
  - EXISTING R1-1 PER "UNIT 1"
  - EXISTING R1-1/STREET NAME SIGN PER "PARCEL 7"
  - EXISTING 100W HPS PER "PARCEL 7"
  - SIGHT VISIBILITY RESTRICTION EASEMENT. SEE FINAL MAP FOR EXACT DIMENSIONS. OBJECT HEIGHT LIMITED TO 30'.



NEVADA  
CITY OF LAS VEGAS  
WATT HOMES - NEVADA DIVISION  
ELKHORN SPRINGS - PARCEL 2  
UNIT 2 - TRAFFIC CONTROL AND STREETLIGHT PLAN

ORION ENGINEERING AND SURVEYING, INC.  
2700 CHANDLER AVENUE, SUITE B-1  
LAS VEGAS, NEVADA 89120  
(702) 739-5921 FAX (702) 739-5929

