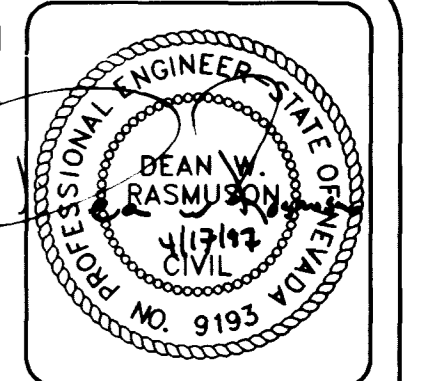


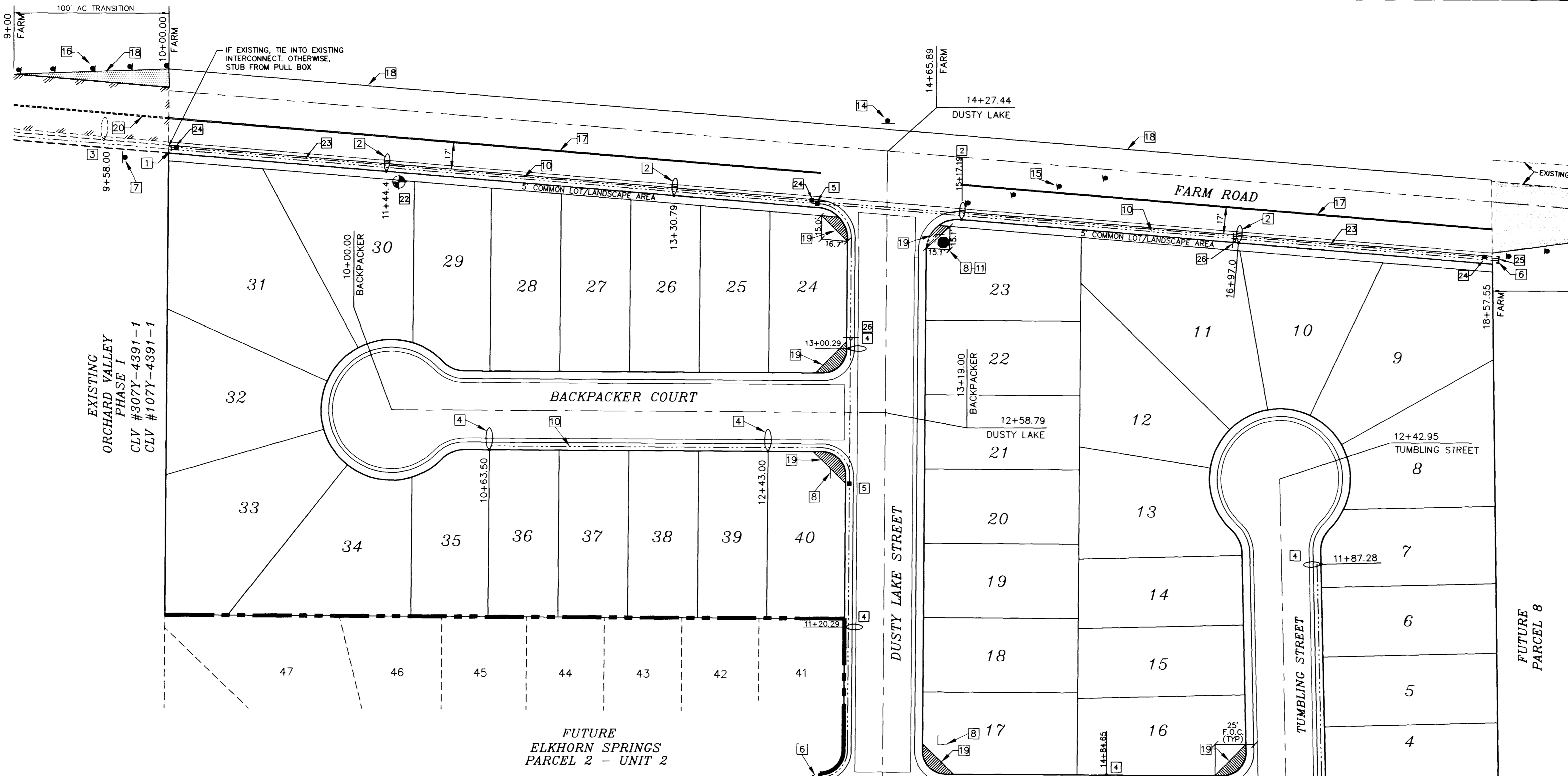
Avoid overhead power line contact.  
**Call before you Overhead**  
 1-702-593-6111  
 NEVADA POWER ENVIRONMENT AND SAFETY SERVICES DEPARTMENT

Avoid cutting underground utility lines. It's costly.  
**Call before you Dig.**  
 1-800-227-2600  
 UNDERGROUND SERVICE ALERT (USA)



DESIGNED BY: DRJ  
 DRAWN BY: DRJ  
 CHECKED BY: MS  
 NO.

DATE: 10/96  
 JOB NUMBER: 001-700X  
 REVISION: BY DATE

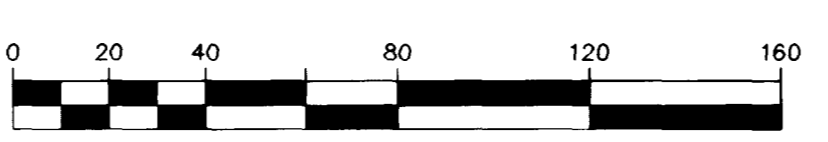
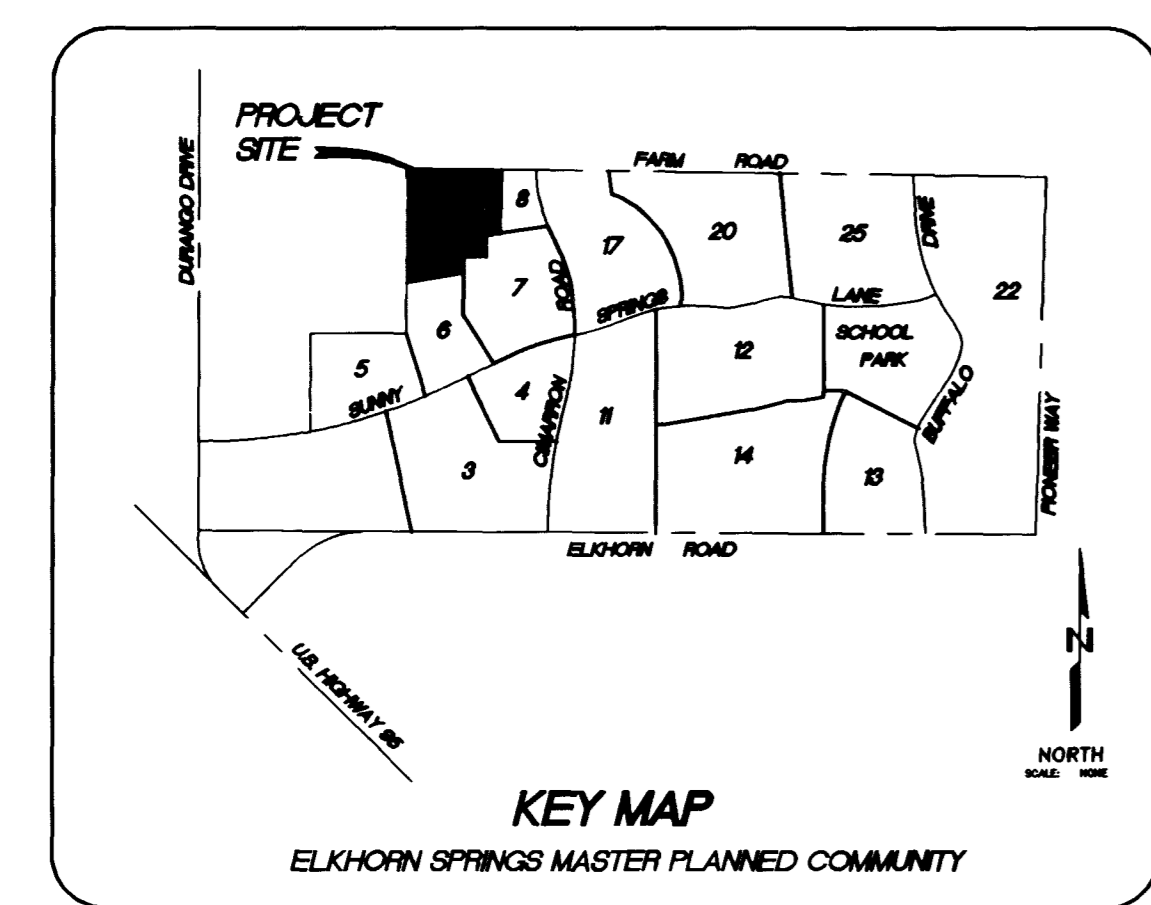


**GENERAL NOTES**

- CONTRACTOR TO VERIFY LOCATIONS OF ALL WALLS PRIOR TO CONSTRUCTION.
- EXISTING TRAFFIC CONTROL APPURTENANCES ARE PER "IMPROVEMENT PLANS FOR ELKHORN SPRINGS - PARCEL 2 - UNIT 1", "IMPROVEMENT PLANS FOR ELKHORN SPRINGS - PARCEL 7" BY ORION ENGINEERING AND SURVEYING, INC. AND "ORCHARD VALLEY PHASE 1", BY G.C. WALLACE, INC..
- CONTRACTOR TO VERIFY DRIVEWAY LOCATIONS PRIOR TO CONSTRUCTION AND NOTIFY ENGINEER OF ANY DISCREPANCIES. STREET LIGHTS MUST BE 6' MINIMUM FROM ANY DRIVEWAY

**CONSTRUCTION NOTES**

- CONNECT TO EXISTING 2" PVC CONDUIT
- INSTALL 200W HPS STREETLIGHT
- EXISTING 200W HPS STREETLIGHT TO REMAIN
- INSTALL 100W HPS STREETLIGHT
- INSTALL 3-1/2" PULLBOX
- STUB/CAP CONDUIT
- REMOVE EXISTING W8-3
- INSTALL STREET NAME SIGN
- EXISTING 100W HPS STREETLIGHT PER PARCEL 7
- INSTALL 2" PVC CONDUIT (TYP.)
- INSTALL R1-1 (24"x 24")
- EXISTING R1-1 AND STREET NAME SIGN (TO REMAIN)
- INSTALL W8-3 (SEE #7)
- INSTALL W1-7
- REMOVE W1-8'S INSTALLED PER "PARCEL 7"
- INSTALL W1-8'S (25" O.C.)
- INSTALL DOUBLE SOLID YELLOW CENTERLINE (EXCEPT BETWEEN RETURNS @ DUSTY LAKE)
- INSTALL 4" SOLID WHITE EDGE LINE
- SIGHT VISIBILITY RESTRICTION EASEMENT (SEE FINAL MAP) OBJECT HEIGHT LIMITED TO 30 INCHES.
- EXISTING DOUBLE YELLOW CENTERLINE (TO REMAIN)
- EXISTING CONDUIT
- SERVICE POINT AND R.C.O.C.
- INSTALL 3" INTERCONNECT
- INSTALL NO. 5 PULLBOX
- STUB AND CAP INTERCONNECT
- INSTALL 25 MPH SIGN ON LIGHT STANDARD
- FUTURE UNIT 2 STREET LIGHT



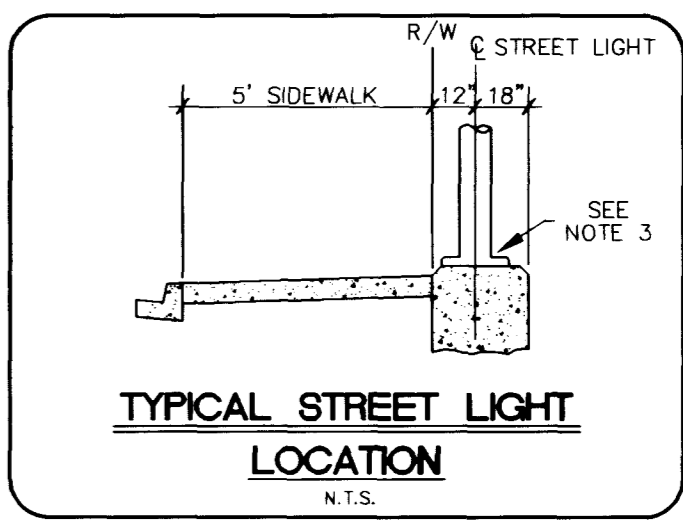
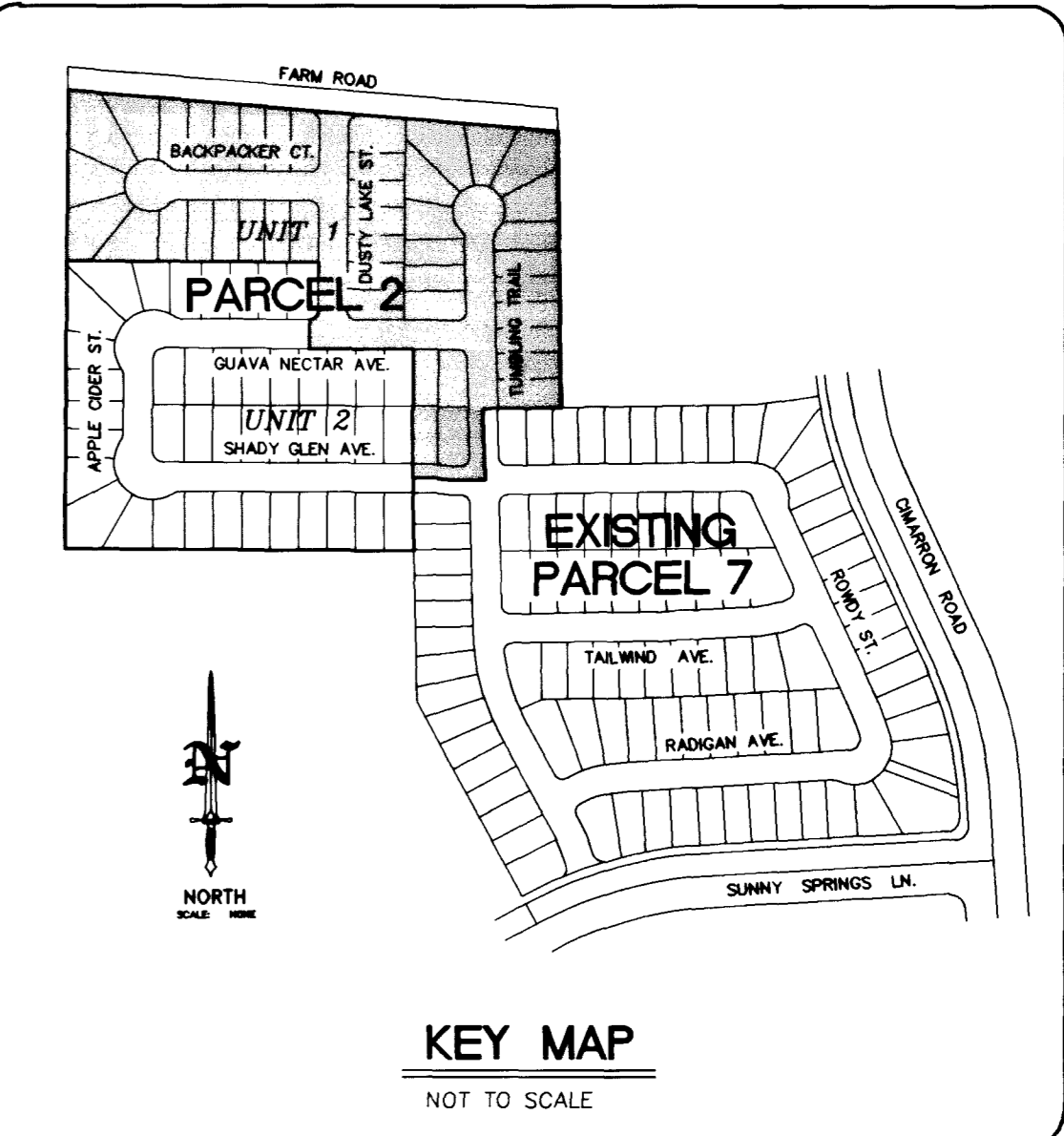
**LEGEND**

- F.O.C. FACE OF CURB
- PROPOSED 2" PVC ST. LT. CONDUIT
- EXIST. 2" PVC ST. LT. CONDUIT
- STREET NAME SIGN
- STOP SIGN R1-1
- PROPOSED STREETLIGHT
- EXISTING STREET LIGHT
- SIGN
- SERVICE POINT AND R.C.O.C.
- SIGHT VISIBILITY RESTRICTION EASEMENT SEE FINAL MAP FOR EXACT DIMENSIONS

**UNIT 1 QUANTITIES**

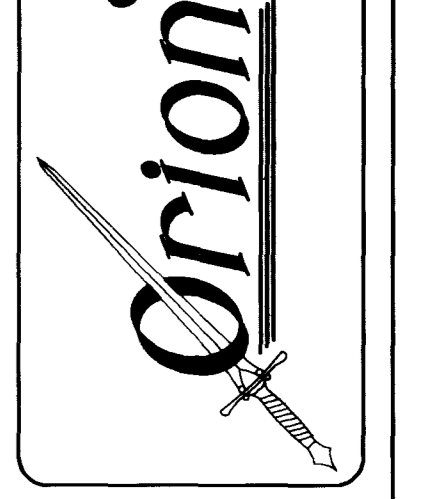
ITEM	QUANTITY
STREET NAME SIGN	4 EA
STOP SIGN (R1-1)	1 EA
100W HPS STREET LIGHT	8 EA
200W HPS STREETLIGHT	4 EA

NOTE TO CONTRACTOR:  
 QUANTITIES SHOWN ARE APPROXIMATIONS ONLY AND ARE INTENDED TO ILLUSTRATE SCOPE OF WORK. THE CONTRACTOR SHALL BE RESPONSIBLE FOR VERIFYING THE EXACT QUANTITIES.



WATT HOMES - NEVADA DIVISION  
 ELKHORN SPRINGS - PARCEL 2  
 UNIT 1 - TRAFFIC CONTROL AND STREETLIGHT PLAN  
 CITY OF LAS VEGAS, NEVADA

ORION ENGINEERING AND SURVEYING, INC.  
 2700 CHANDLER AVENUE, SUITE B-1  
 LAS VEGAS, NEVADA 89120  
 (702) 739-5921 FAX (702) 739-5929



4686

