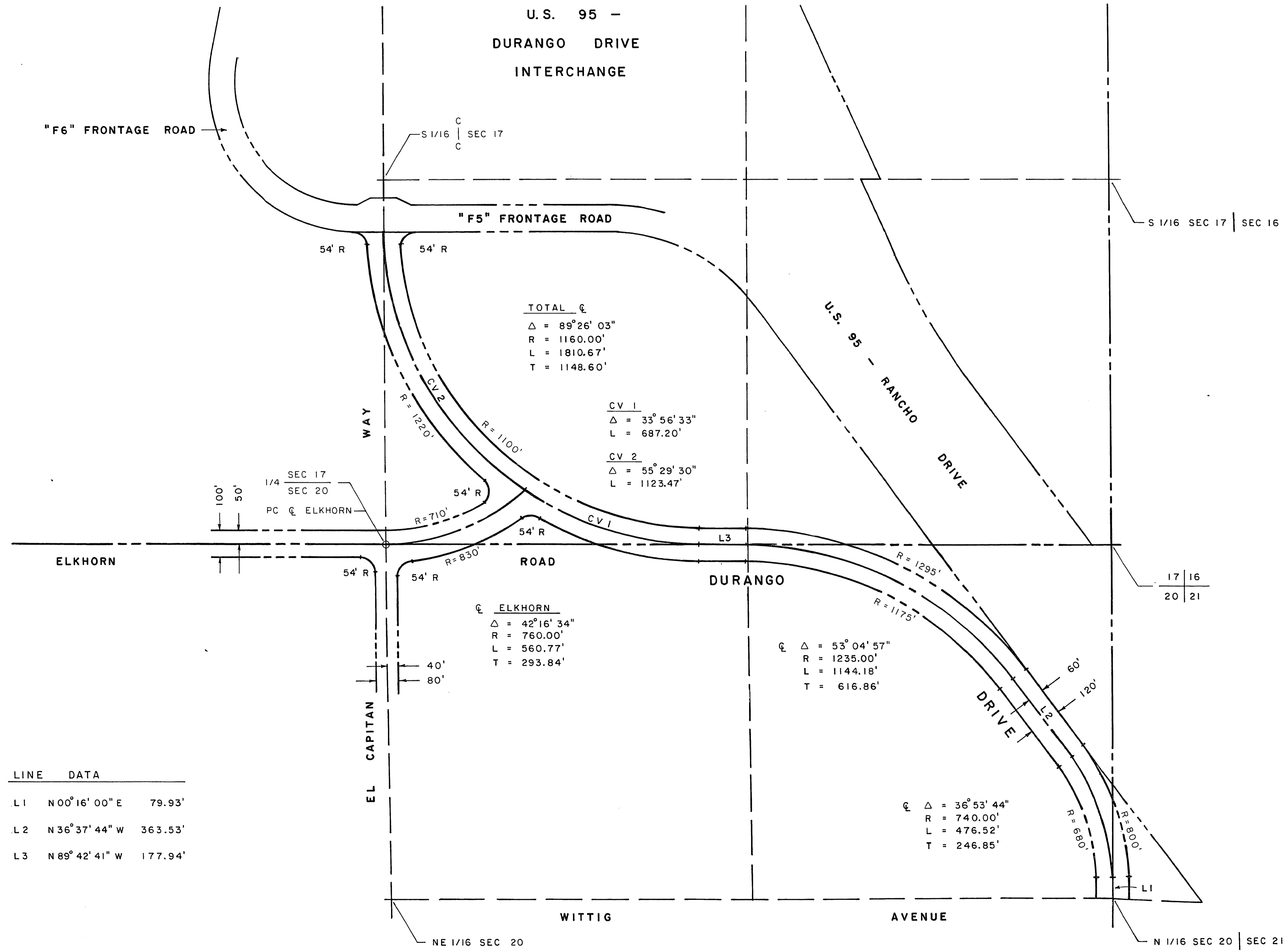


A PORTION OF T19S, R60E, M.D.M.



CITY ENGINEER, CITY OF LAS VEGAS  
 DENNIS ANDERSON, P.E.  
 DATE 09.09.94

TRAFFIC ENGINEER, CITY OF LAS VEGAS  
 GLENN E. GRAYSON, P.E.  
 DATE 10-12-94

R/W & REAL PROPERTY SERVICES  
 EDWARD R. BYRGE  
 DATE July 14, 1994

Scale (H) 1" = 200' Scale (V) W.A. Date JUNE 1994 Design by b b Drawn by RR 6-17-94 Approved by RICHARD D. GOECKE DATE 10-17-94 DIRECTOR OF PUBLIC WORKS, CITY OF LAS VEGAS		Date
<b>Department of Public Works</b>		
DURANGO DRIVE REALIGNMENT		N 1/16 COR SEC 20   SEC 21 T19S, R60E, M.D.M. TO "F5" FRONTAGE ROAD - U.S. 95 - DURANGO INTERCHANGE
Drawing no. 115-402		1

