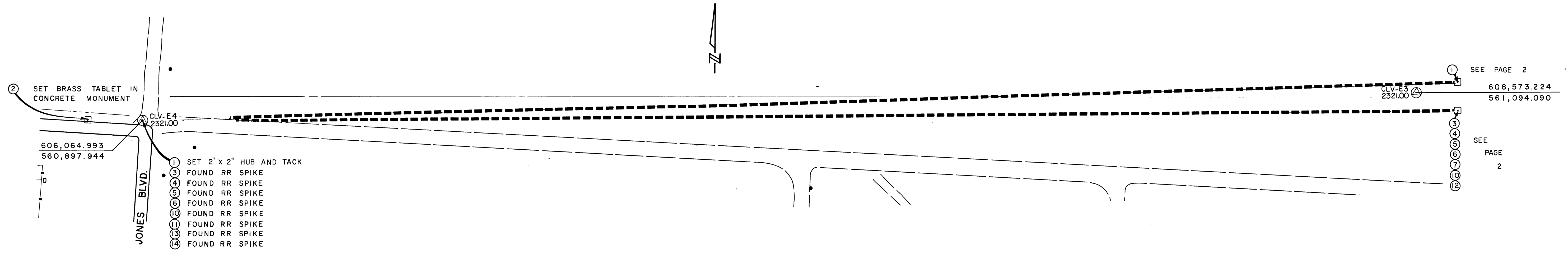
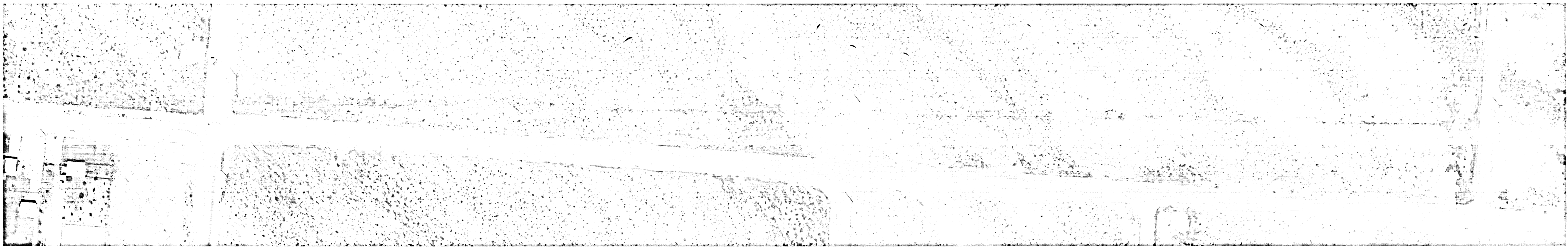
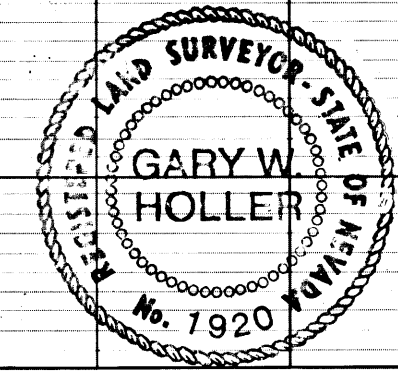


14.5.53



1	RECORD OF SURVEY	FILE 10	PAGE 42	R.L.S. NO. 560
2	RECORD OF SURVEY	FILE 17	PAGE 22	R.L.S. NO. 1919
3	RECORD OF SURVEY	FILE 24	PAGE 47	R.L.S. NO. 1624
4	RECORD OF SURVEY	FILE 25	PAGE 14	R.L.S. NO. 1624
5	RECORD OF SURVEY	FILE 26	PAGE 57	R.L.S. NO. 1624
6	PARCEL MAP	FILE 2	PAGE 52	R.L.S. NO. 1624
7	PARCEL MAP	FILE 3	PAGE 21	R.L.S. NO. 1096
8	RECORD OF SURVEY	FILE 28	PAGE 17	R.L.S. NO. 290
9	RECORD OF SURVEY	FILE 28	PAGE 87	R.L.S. NO. 2050
10	PARCEL MAP	FILE 9	PAGE 18	R.L.S. NO. 1624
11	PARCEL MAP	FILE 11	PAGE 5	R.L.S. NO. 2984
12	PARCEL MAP	FILE 15	PAGE 30	R.L.S. NO. 1624
13	PARCEL MAP	FILE 17	PAGE 45	R.L.S. NO. 1803
14	PARCEL MAP	FILE 18	PAGE 53	R.L.S. NO. 1803



THIS MAP WAS COMPILED BY PHOTOGAMMETRIC METHODS USING CONTROLS SET BY THE CITY OF LAS VEGAS.

GARY W. HOLLER, CITY ENGINEER, R.L.S. 1920
 12/17/79
 DATE

REVISIONS	
REV. DATE	DESCRIPTION

MAP OF SURVEY OF CITY OF LAS VEGAS UNDER PROVISIONS OF 270 NRS AND IN ACCORDANCE WITH A RESOLUTION OF THE BOARD OF CITY COMMISSIONERS OF THE CITY OF LAS VEGAS PASSED FEBRUARY 21, 1979

CITY OF LAS VEGAS

Department of Public Services

scale	Sheet No. 1
HORIZ.	of 2 Sheets
VERT.	