

Avoid cutting underground utility lines. It's costly.

Call before you Dig
1-800-227-2600

Call before you Overhead
1-702-593-6111

SEWER CONSTRUCTION NOTES

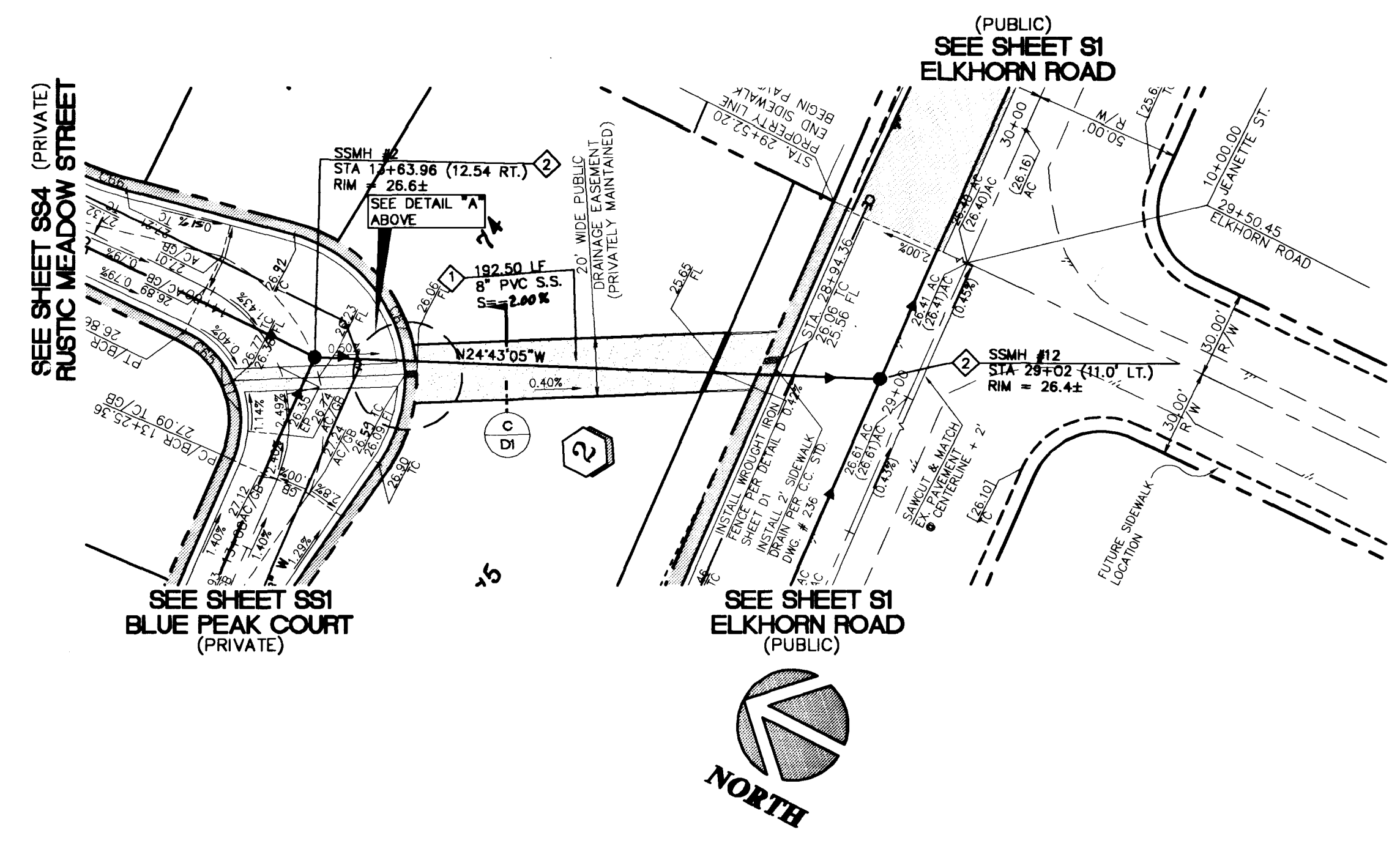
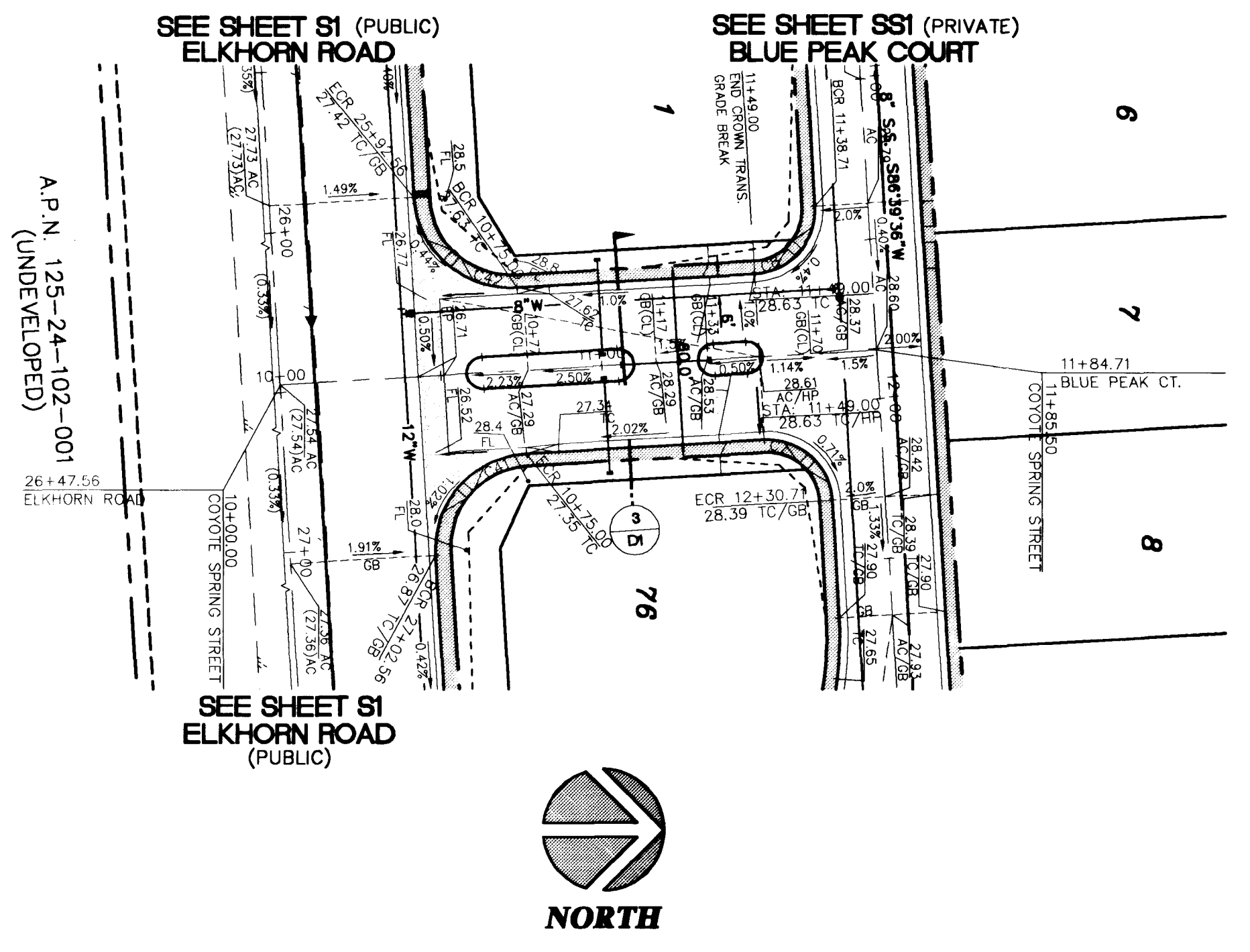
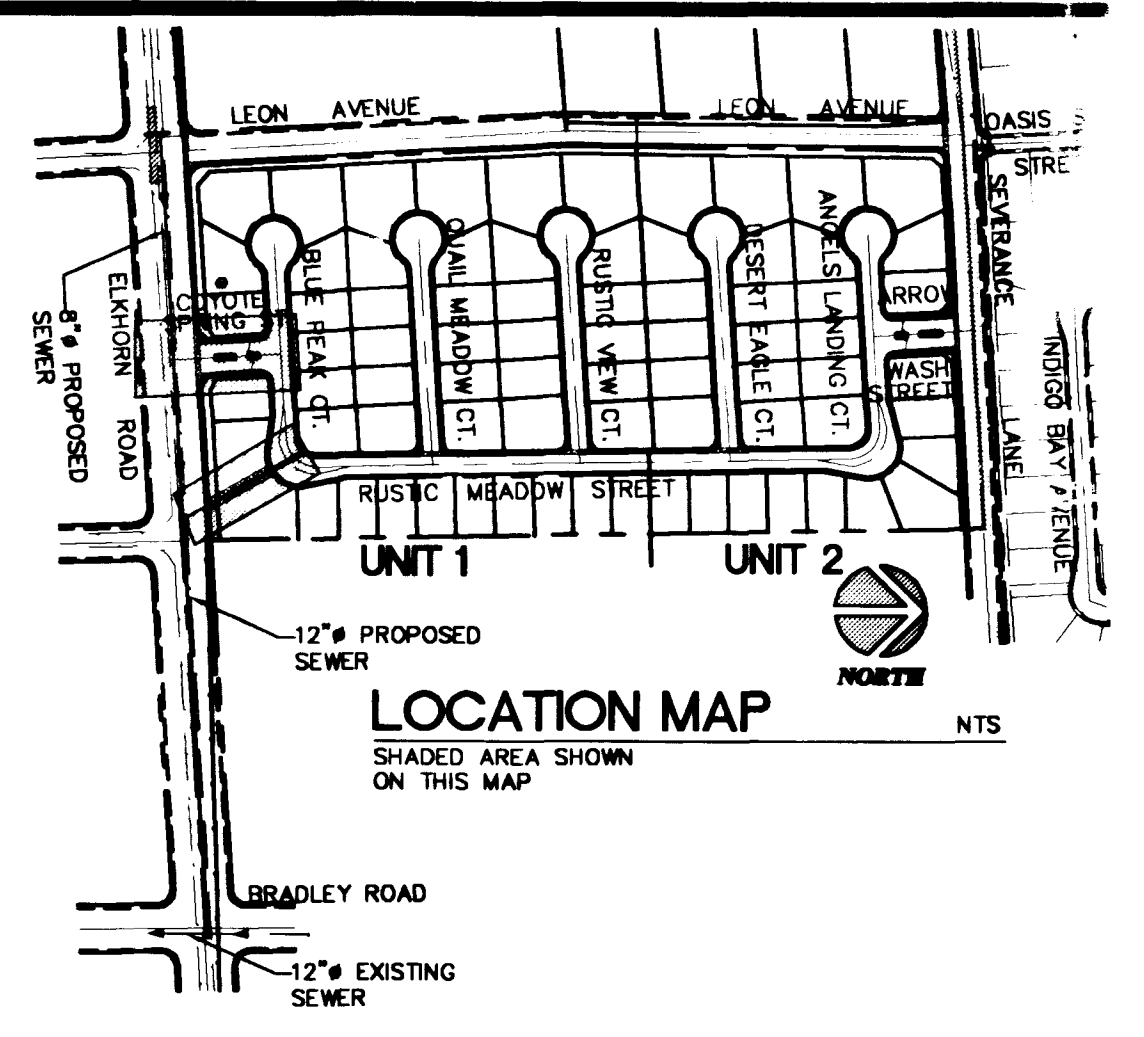
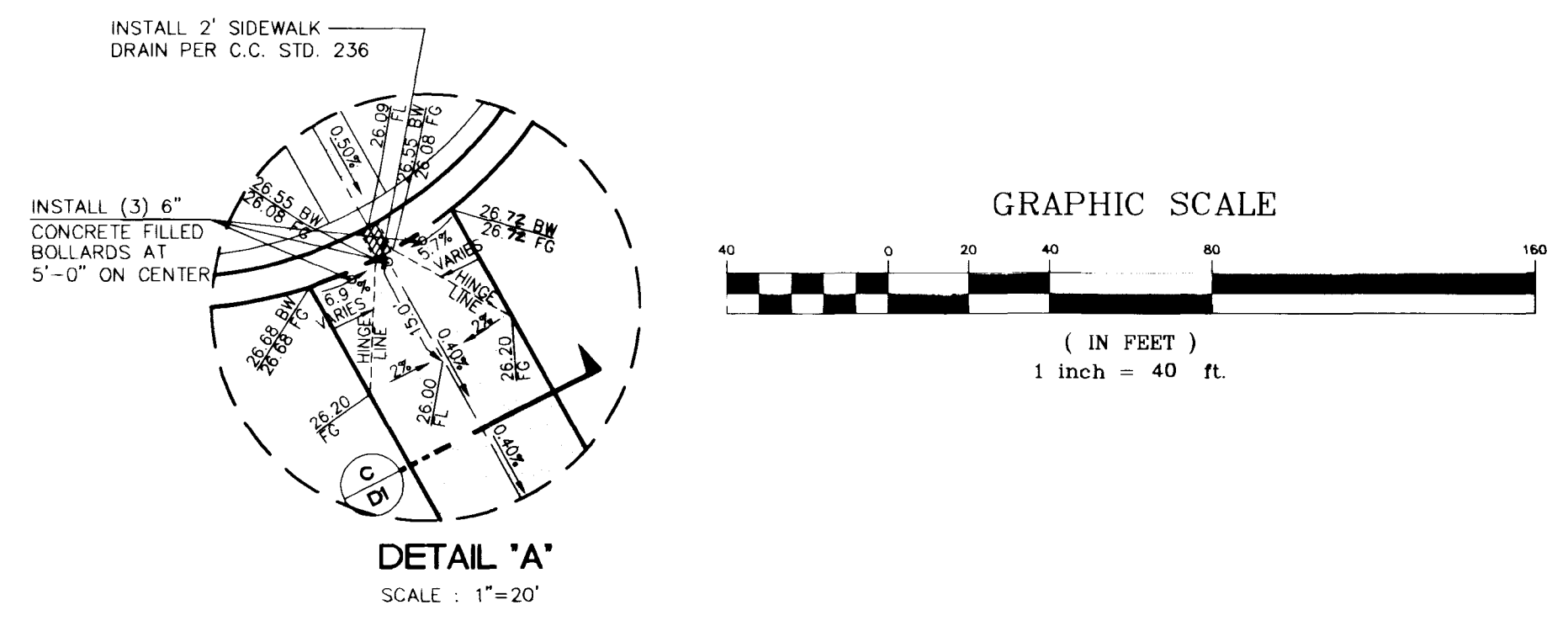
- 1. INSTALL 8" SEWER MAIN. TRENCH SECTION BACKFILL PER D.C.S.W.C.S. NO. SD-18
- 2. INSTALL 48" SANITARY SEWER MANHOLE PER DESIGN AND CONSTRUCTION STANDARDS FOR WASTEWATER COLLECTION SYSTEMS PLATE SD-1
- 3. REMOVE CAP & CONNECT TO EXISTING STUB
- 4. INSTALL 4" SEWER LATERAL W/ 4" WYE. LOCATION PER TYPICAL LOT DETAIL "A" ON SHEET D1 UNLESS NOTED OTHERWISE
- 5. INSTALL 8" CAP

BASIS OF BEARING

BEING THE NORTH LINE OF THE LOT 63, AS IT IS SHOWN ON THE RECORD OF SURVEY IN FILE 52, OF SURVEYS, PAGE 70, OFFICIAL RECORDS OF CLARK COUNTY, NEVADA, WHICH BEARS: SOUTH 85°04'37" WEST.

BENCHMARK

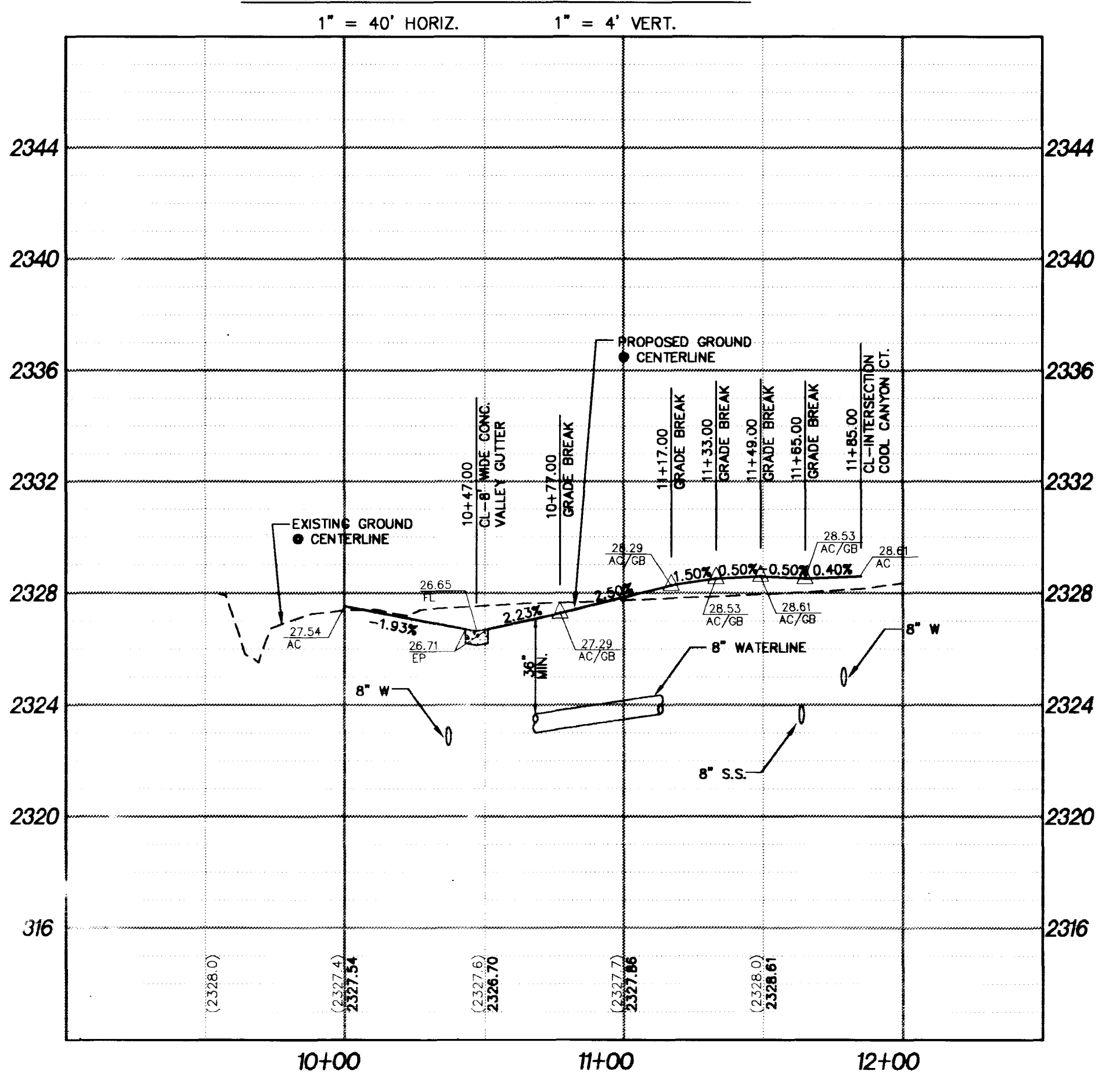
BEING THE CITY OF NORTH LAS VEGAS BM, #518118 (1LV90-13E4), 50' WEST OF BLM BRASS CAP @ DECATUR BLVD. & FARM ROAD. ELEVATION = 707.9639 METERS = 2,322.71 FEET. (N.A.V.D. 1988) (ELEVATION BASED ON CITY OF LAS VEGAS VERTICAL DATUM)



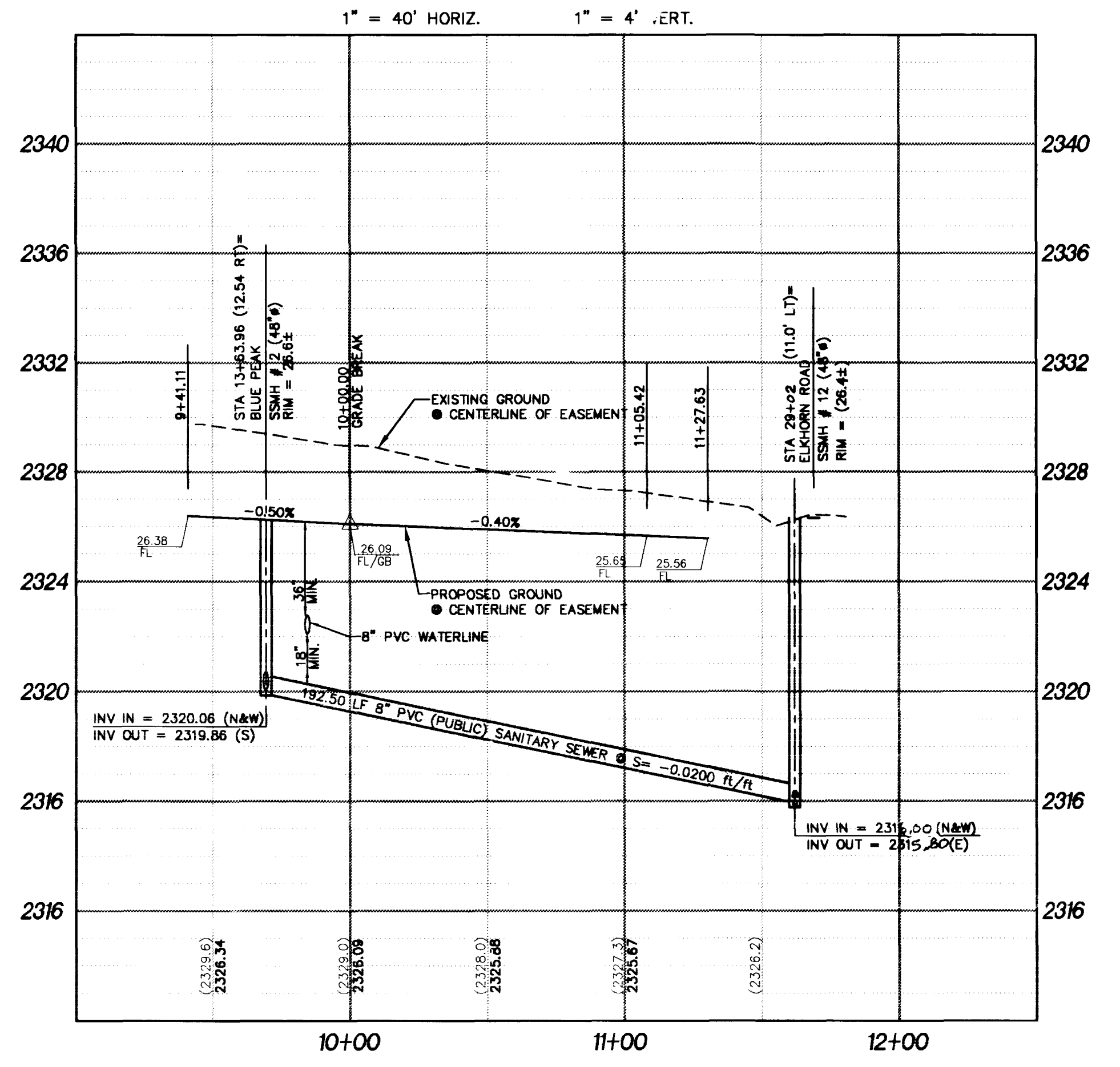
BACK OF CURB CURVE TABLE

CURVE	LENGTH	RADIUS	TANGENT	DELTA
C7	31.42'	20.00'	20.00'	90°00'00"
C8	31.42'	20.00'	20.00'	90°00'00"
C41	47.12'	30.00'	30.00'	90°00'00"
C42	47.12'	30.00'	30.00'	90°00'00"
C65	51.98'	34.00'	32.60'	87°35'25"
C66	19.17'	100.00'	9.61'	1°58'55"
C67	97.52'	51.00'	72.24'	109°33'15"

COYOTE SPRING STREET
PRIVATE DRIVE WITH P.U.E. AND PUBLIC SEWER EASEMENT



20' PRIVATE DRAINAGE EASEMENT
PUBLIC SEWER EASEMENT



CONCORDIA OF NEVADA
CITY OF LAS VEGAS

PLAN AND PROFILE
COYOTE SPRING STREET
20' DRAINAGE EASEMENT
UNIT 1

CONCORDIA
H O M E S

DEVELOPER

SEAL
OF NEVADA
LELAND
PROFESSIONAL ENGINEER
1992

6280 S. Valley View Blvd
Suite 200
Las Vegas, NV 89118
Tel: (702) 368-3008
Fax: (702) 368-0047

CVL
CONSULTANTS, INC.
ENGINEERING · PLANNING · LAND SURVEYING

SHEET
SS5
16 OF 17

AGENCY DWG. NO.
1074-4619-1

NO. REVISION DATE APP.

DATE

AS NOTED

JOB No. 99-9005-03

DESIGNED BY: S/C/ekd

CHECKED BY: S/C/JWL

PRODUCT DATE: 02/15

PLAT DATE: 07/26/99

