

Avoid cutting underground utility lines. It's costly.

**Call before you Dig**  
1-800-227-2600

**Call before you Overhead**  
1-702-593-6111

**SEWER CONSTRUCTION NOTES**

- 1. INSTALL 8" SEWER MAIN, TRENCH SECTION BACKFILL PER D.C.S.W.C.S. NO. SD-16
- 2. INSTALL 48" SANITARY SEWER MANHOLE PER DESIGN AND CONSTRUCTION STANDARDS FOR WASTEWATER COLLECTION SYSTEMS PLATE SD-1
- 3. REMOVE CAP & CONNECT TO EXISTING STUB
- 4. INSTALL 4" SEWER LATERAL W/ 4" WYE. LOCATION PER TYPICAL LOT DETAIL "A" ON SHEET D1 UNLESS NOTED OTHERWISE
- 5. INSTALL 8" CAP

**BASIS OF BEARING**

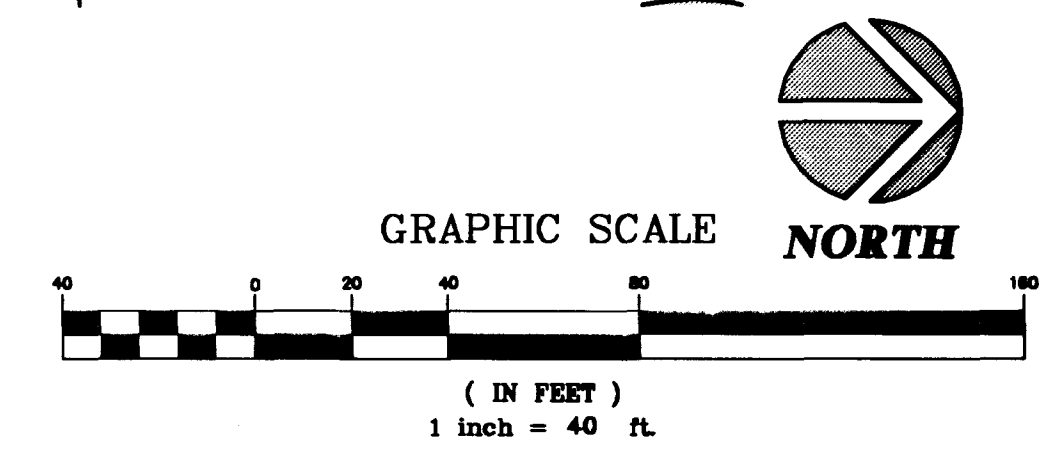
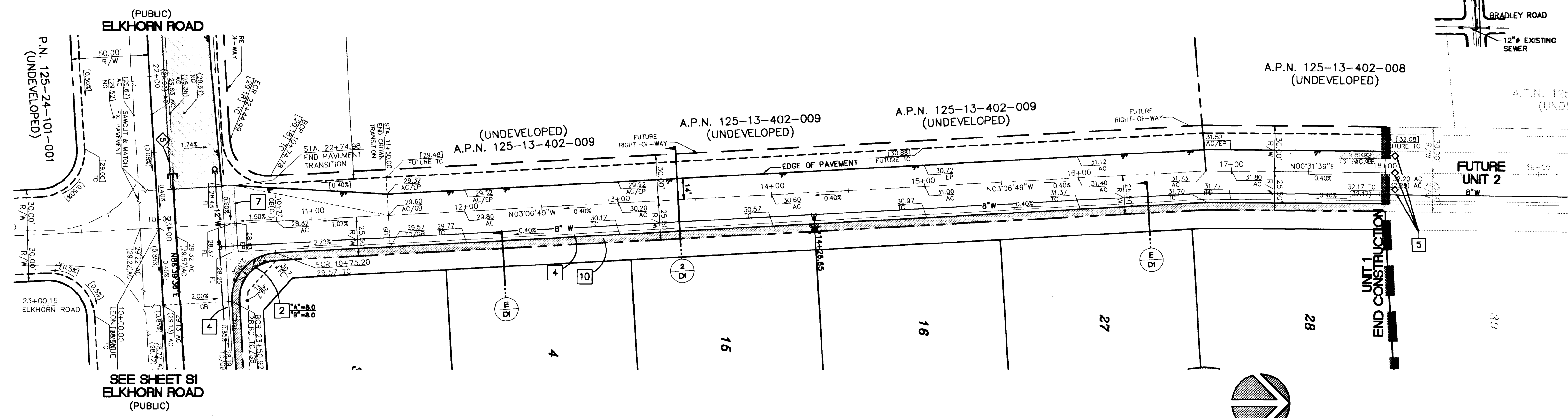
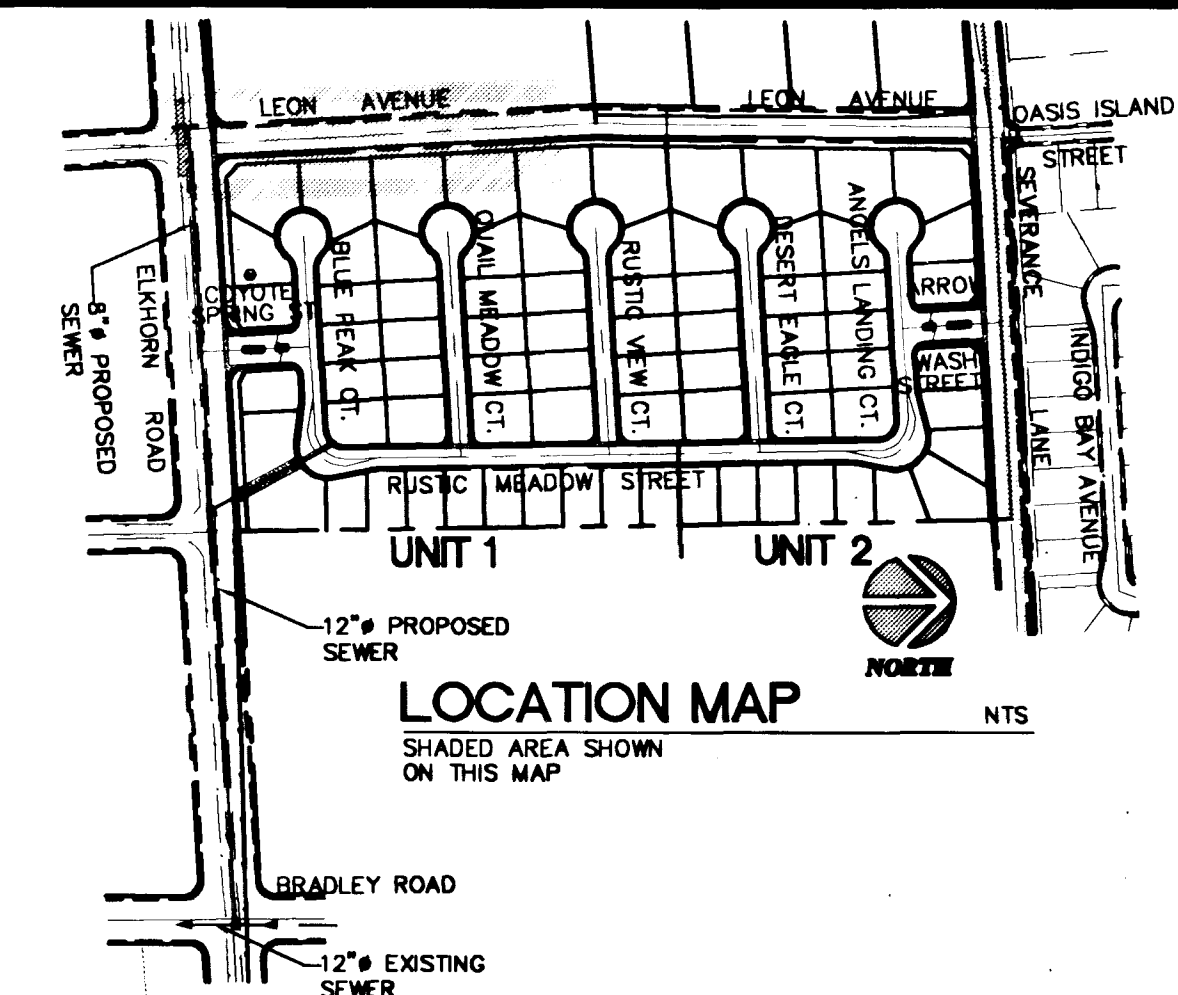
BEING THE NORTH LINE OF THE LOT 63, AS IT IS SHOWN ON THE RECORD OF SURVEY IN FILE 52, OF SURVEYS, PAGE 70, OFFICIAL RECORDS OF CLARK COUNTY, NEVADA, WHICH BEARS: SOUTH 85°04'37" WEST.

**BENCHMARK**

BEING THE CITY OF NORTH LAS VEGAS BM, #518118 (1LV90-13E4), 50' WEST OF BLM BRASS CAP @ DECATUR BLVD. & FARM ROAD. ELEVATION = 707.9639 METERS = 2,322.71 FEET. (N.A.V.D. 1988) (ELEVATION BASED ON CITY OF LAS VEGAS VERTICAL DATUM)

**CONSTRUCTION NOTES**

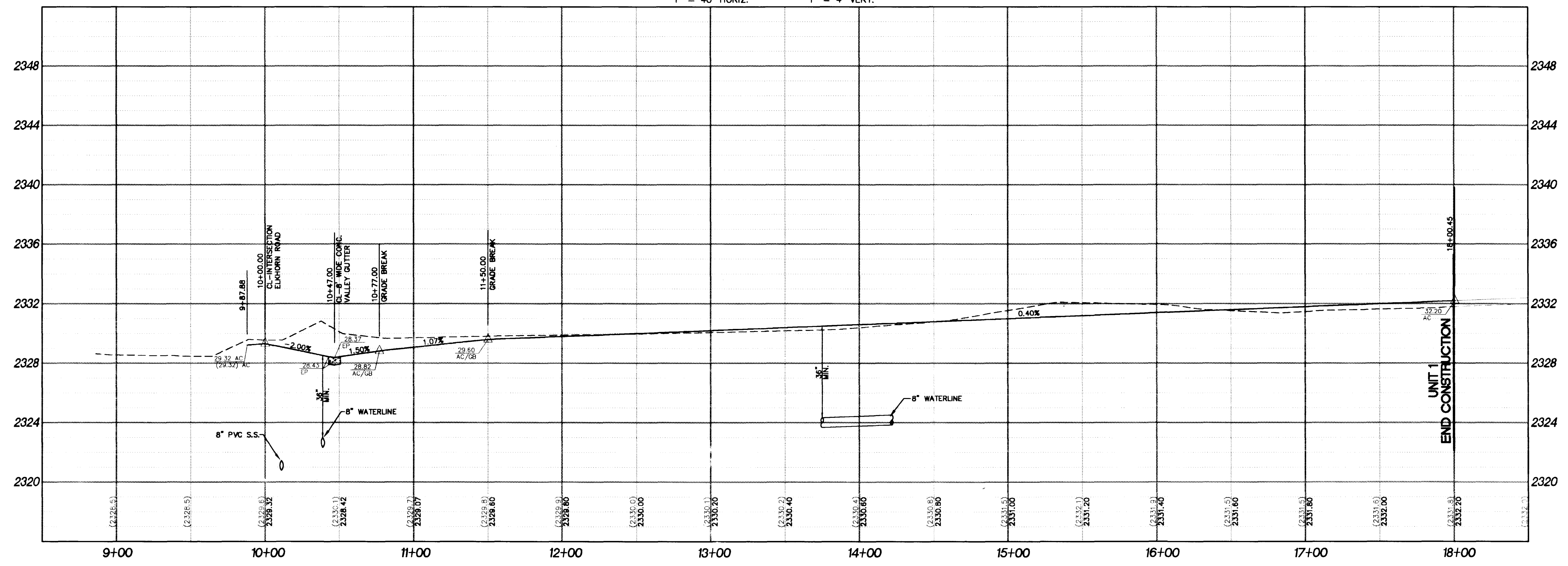
- 1. CONSTRUCT 8" CONCRETE VALLEY GUTTER PER CLARK COUNTY AREA STANDARD DWG. NO. 228.
- 2. CONSTRUCT SIDEWALK RAMP (CASE 1) PER CLARK COUNTY AREA STANDARD DWG. NO. 235. (TRANSITION LENGTHS A & B SHOWN ON PLAN)
- 4. CONSTRUCT "L" TYPE CURB & GUTTER PER CLARK COUNTY AREA STANDARD DWG. NO. 216.
- 5. INSTALL TEMPORARY END OF ROAD MARKERS PER SEC. 3C-4 OF THE MUTCD.
- 7. CONSTRUCT HALF STREET 8" CONCRETE VALLEY GUTTER PER CLARK COUNTY AREA STANDARD DWG. NO. 229.
- 10. CONSTRUCT 5' WIDE CONCRETE SIDEWALK PER CLARK COUNTY AREA STANDARD DWG. NO. 234.



**CURVE TABLE**

CURVE	LENGTH	RADIUS	TANGENT	DELTA
C22	47.24	30.00	30.12	90°13'35"

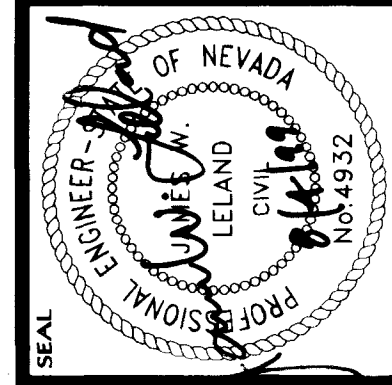
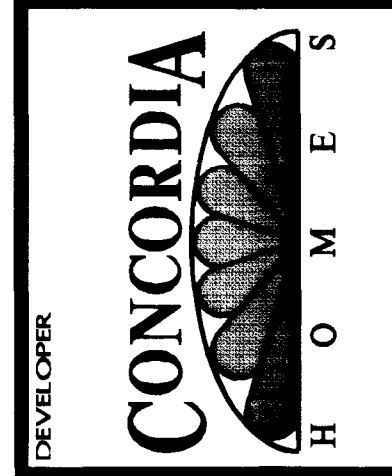
**LEON AVENUE (PUBLIC)**  
1" = 40' HORIZ. 1" = 4' VERT.



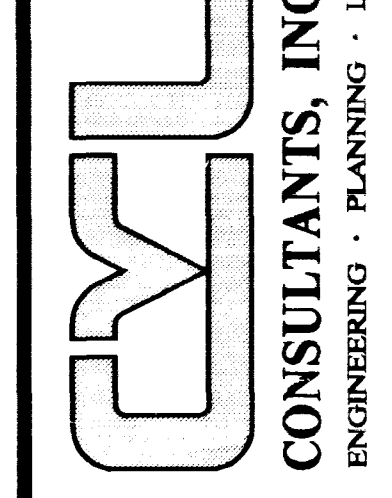
NO.	REVISION	DATE	APP.
6			
5			
4			
3			
2			
1			

CONCORDIA & ELKHORN/LEON  
CITY OF LAS VEGAS

**PLAN AND PROFILE**  
LEON AVENUE  
UNIT 1



6280 S. Valley View Blvd  
Suite 200  
Las Vegas, NV 89118  
Tel: (702) 368-3008  
Fax: (702) 368-0047



SHEET  
**S3**  
11 OF 17

AGENCY DWG. NO.  
107Y-4619-1

Call before you dig  
1-800-37-6868  
Call before you Overland  
1-702-583-6868

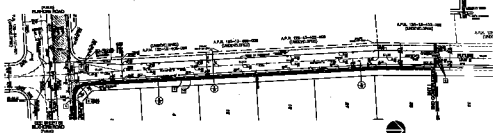
- GENERAL CONSTRUCTION NOTES**
- 1. SEE PLAN FOR ALL UTILITY LOCATIONS.
  - 2. ALL UTILITIES TO BE DELETED OR RELOCATED AS SHOWN ON THIS PLAN.
  - 3. ALL UTILITIES TO BE DELETED OR RELOCATED AS SHOWN ON THIS PLAN.
  - 4. ALL UTILITIES TO BE DELETED OR RELOCATED AS SHOWN ON THIS PLAN.
  - 5. ALL UTILITIES TO BE DELETED OR RELOCATED AS SHOWN ON THIS PLAN.

**BASE OF BEARING**

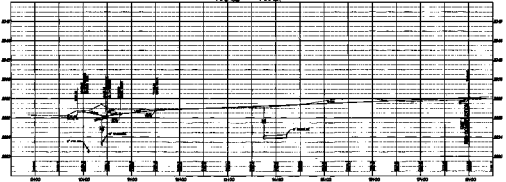
**BENCHMARK**

PLUMB LINE OF THE CENTERLINE OF THE ROAD

- CONSTRUCTION NOTES**
1. SEE PLAN FOR ALL UTILITY LOCATIONS.
  2. ALL UTILITIES TO BE DELETED OR RELOCATED AS SHOWN ON THIS PLAN.
  3. ALL UTILITIES TO BE DELETED OR RELOCATED AS SHOWN ON THIS PLAN.
  4. ALL UTILITIES TO BE DELETED OR RELOCATED AS SHOWN ON THIS PLAN.
  5. ALL UTILITIES TO BE DELETED OR RELOCATED AS SHOWN ON THIS PLAN.



**LEONARDO DRIVE**  
P.C. 0+00 P.T. 0+00



CONCORDIA CONSULTANTS, INC.

11 of 17

08-790-7-20-0000