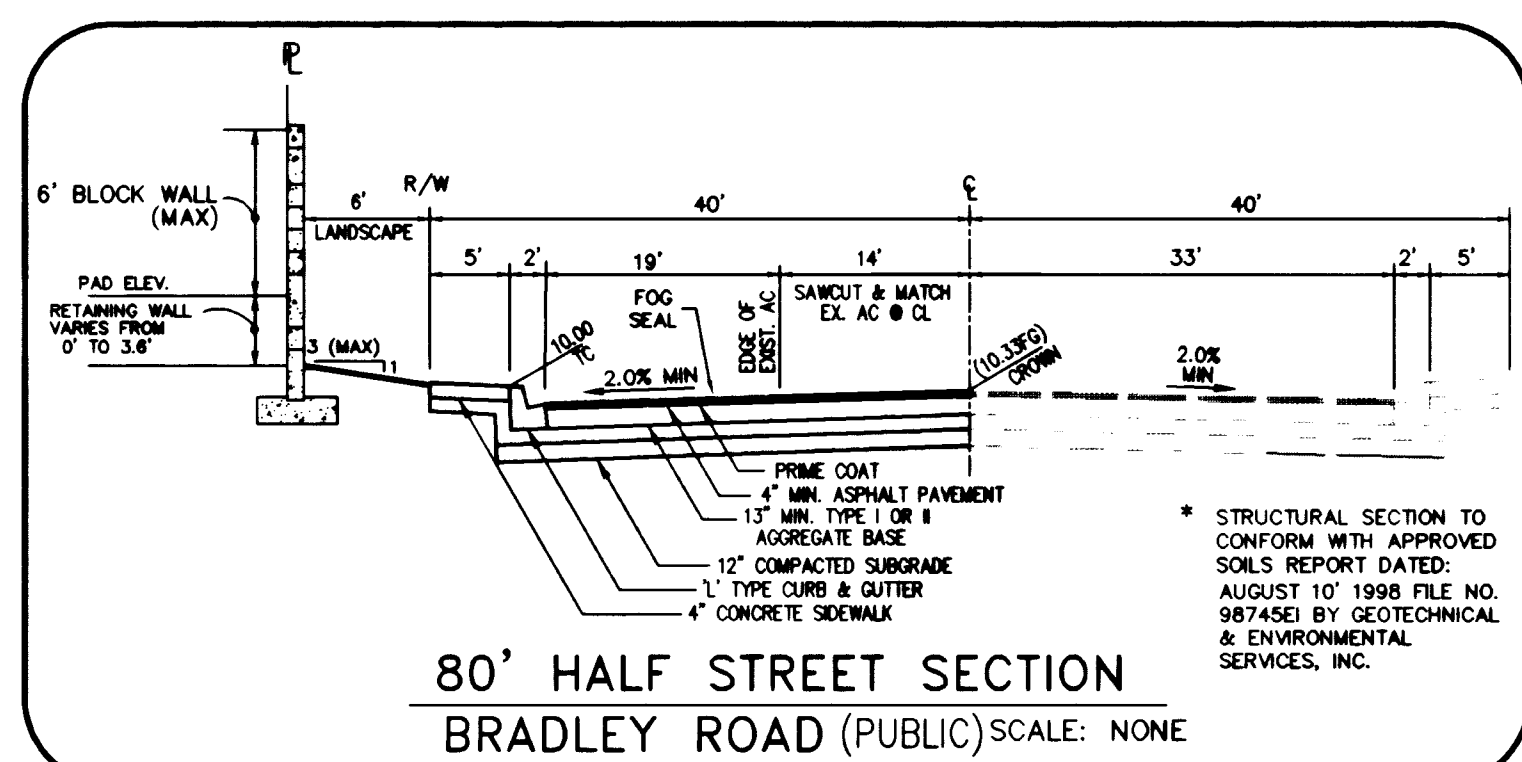
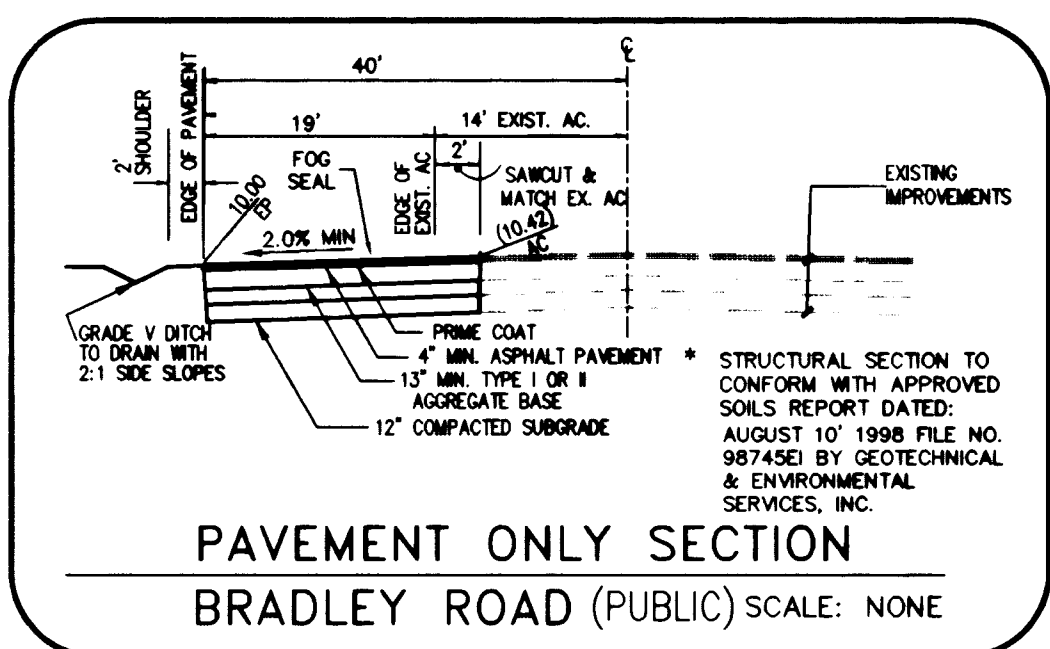
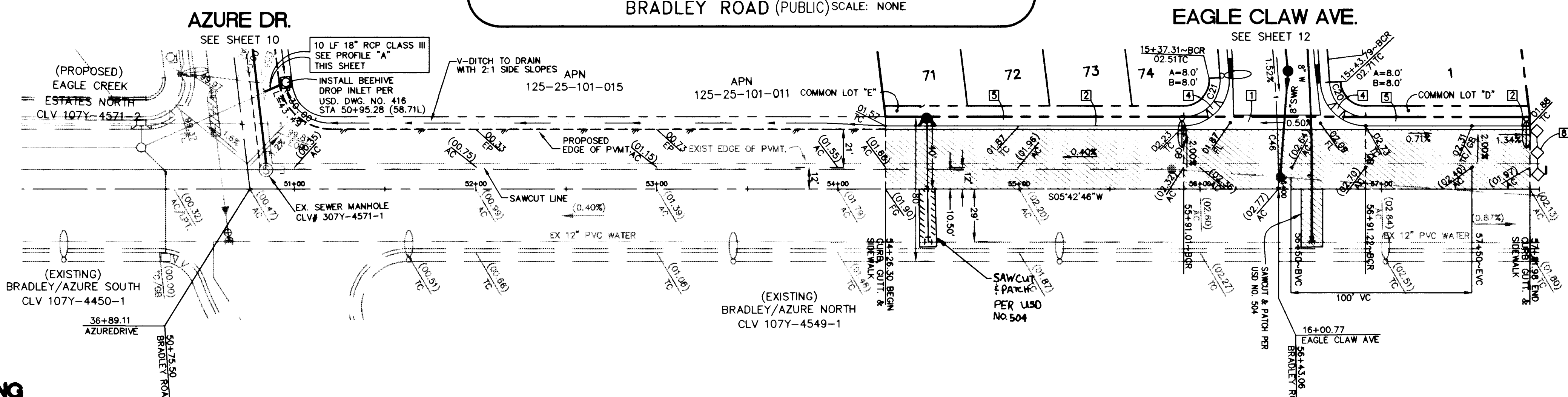
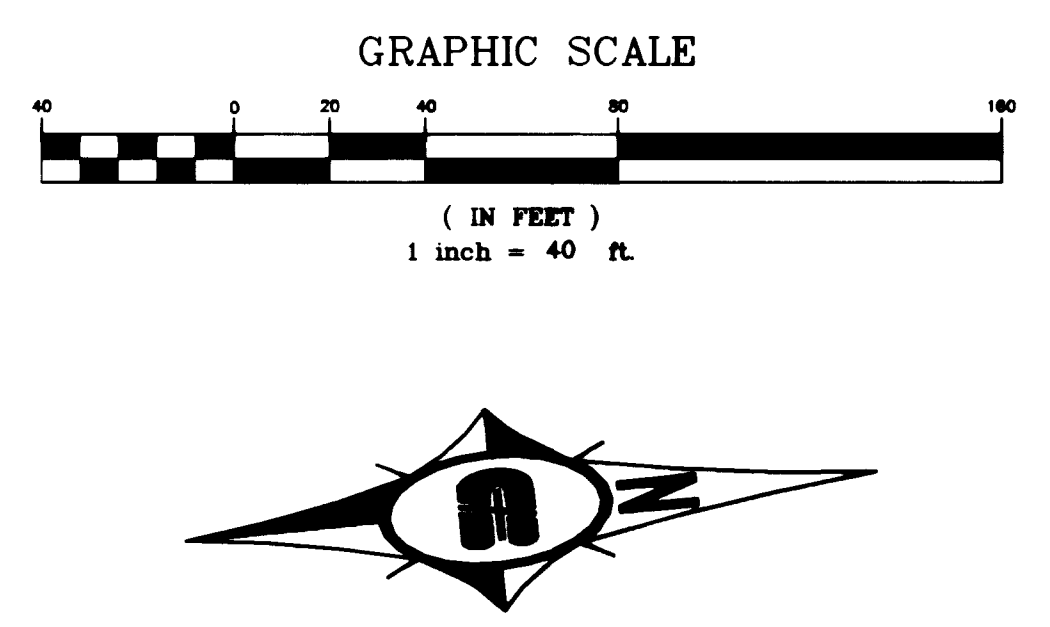


Call before you Dig
1-800-227-2600

SAFETY ALERT
Call before you Overhead
593-6111

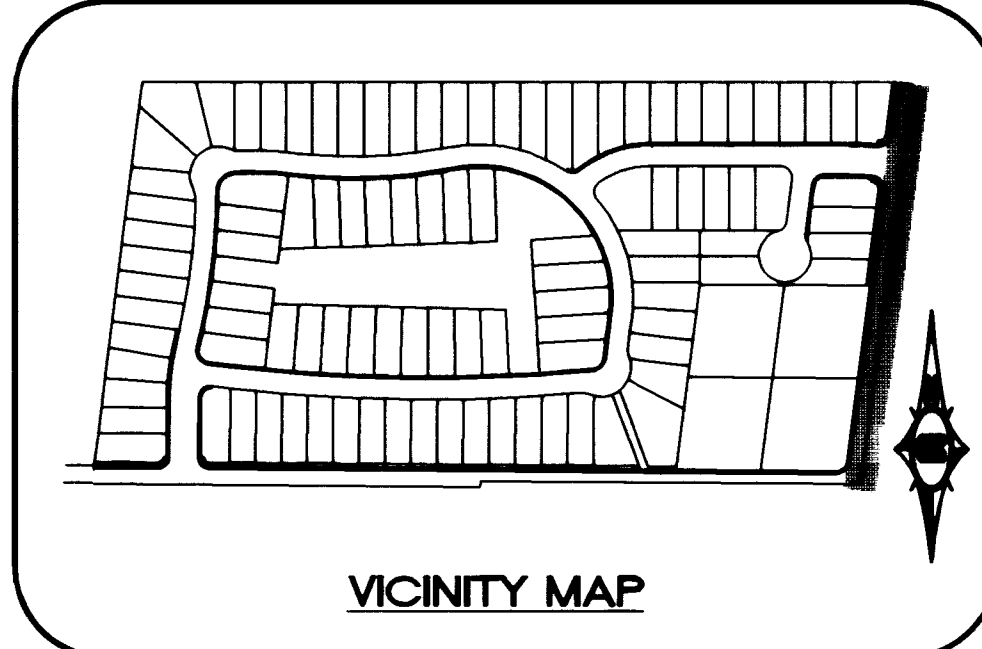


- CONSTRUCTION NOTES**
- CONSTRUCT 8" CONCRETE VALLEY GUTTER PER CLARK COUNTY AREA STD. DWG. NO. 228
 - CONSTRUCT 1" CURB AND GUTTER PER CLARK COUNTY AREA STD. DWG. NO. 216
 - CONSTRUCT TACK ON ISLAND CURB PER CLARK COUNTY STD. DWG. NO. 220
 - CONSTRUCT SIDEWALK RAMP (CASE 1) PER CLARK COUNTY AREA STD. DWG. NO. 235
 - CONSTRUCT 5.0' WIDE CONCRETE SIDEWALK PER CLARK COUNTY AREA STD. DWG. NO. 234
 - CONSTRUCT 4.0' WIDE CONCRETE SIDEWALK PER CLARK COUNTY AREA STD. DWG. NO. 234
 - CONSTRUCT SIDEWALK DRAIN PER CLARK COUNTY AREA STD. DWG. NO. 236
 - INSTALL TEMPORARY END OF ROAD BARRICADE
 - CONSTRUCT 10.0' ROLL TO "L" TYPE CURB SEE DETAIL SHEET 17
 - SAWCUT EXIST. A.C. PAVING AND REMOVE
 - NO PARKING ANYTIME (PAINT CURB RED)
 - CONSTRUCT ROLL TYPE CURB AND GUTTER PER CLARK COUNTY AREA STD. DWG. NO. 217A



BACK OF CURB CURVE DATA

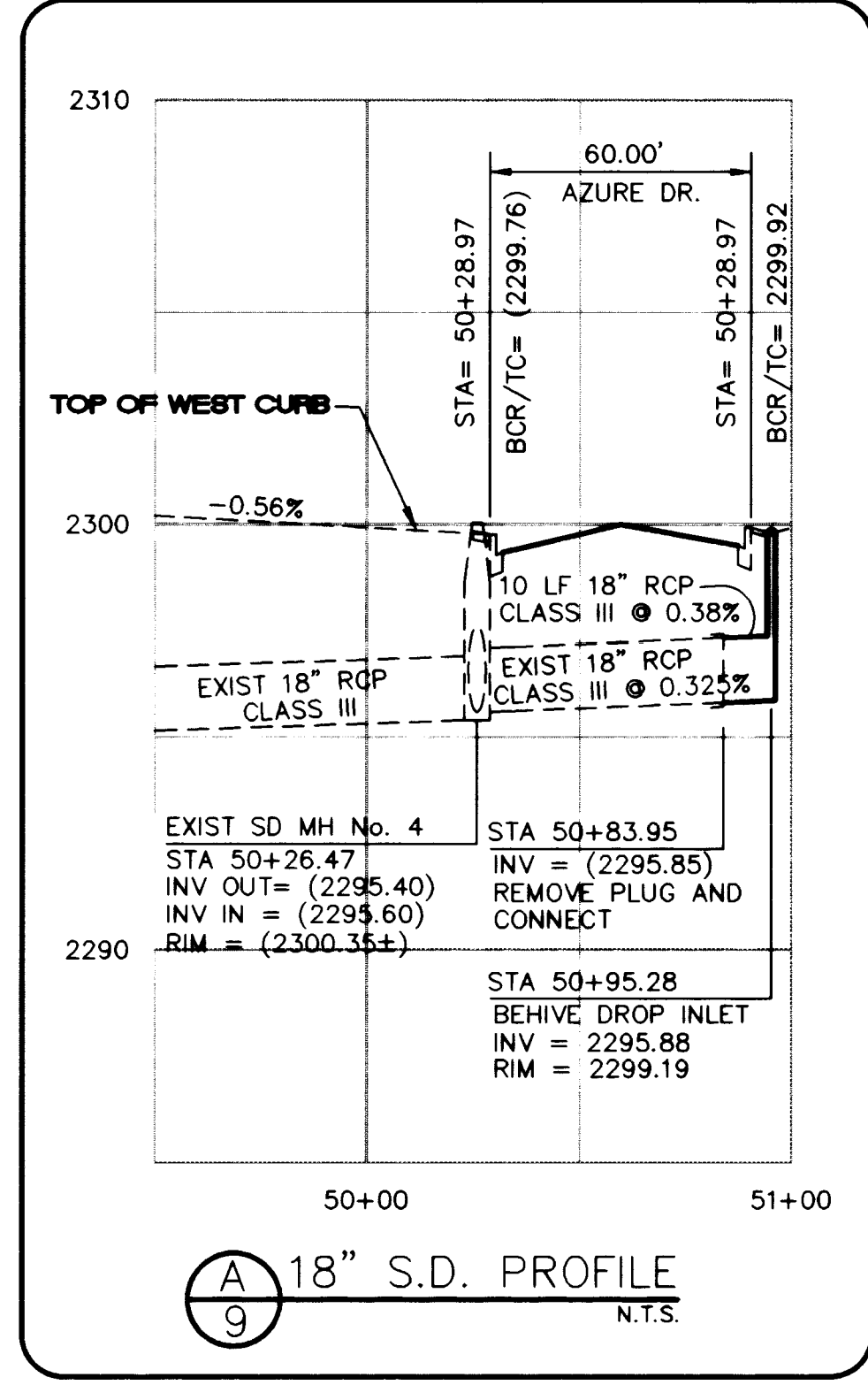
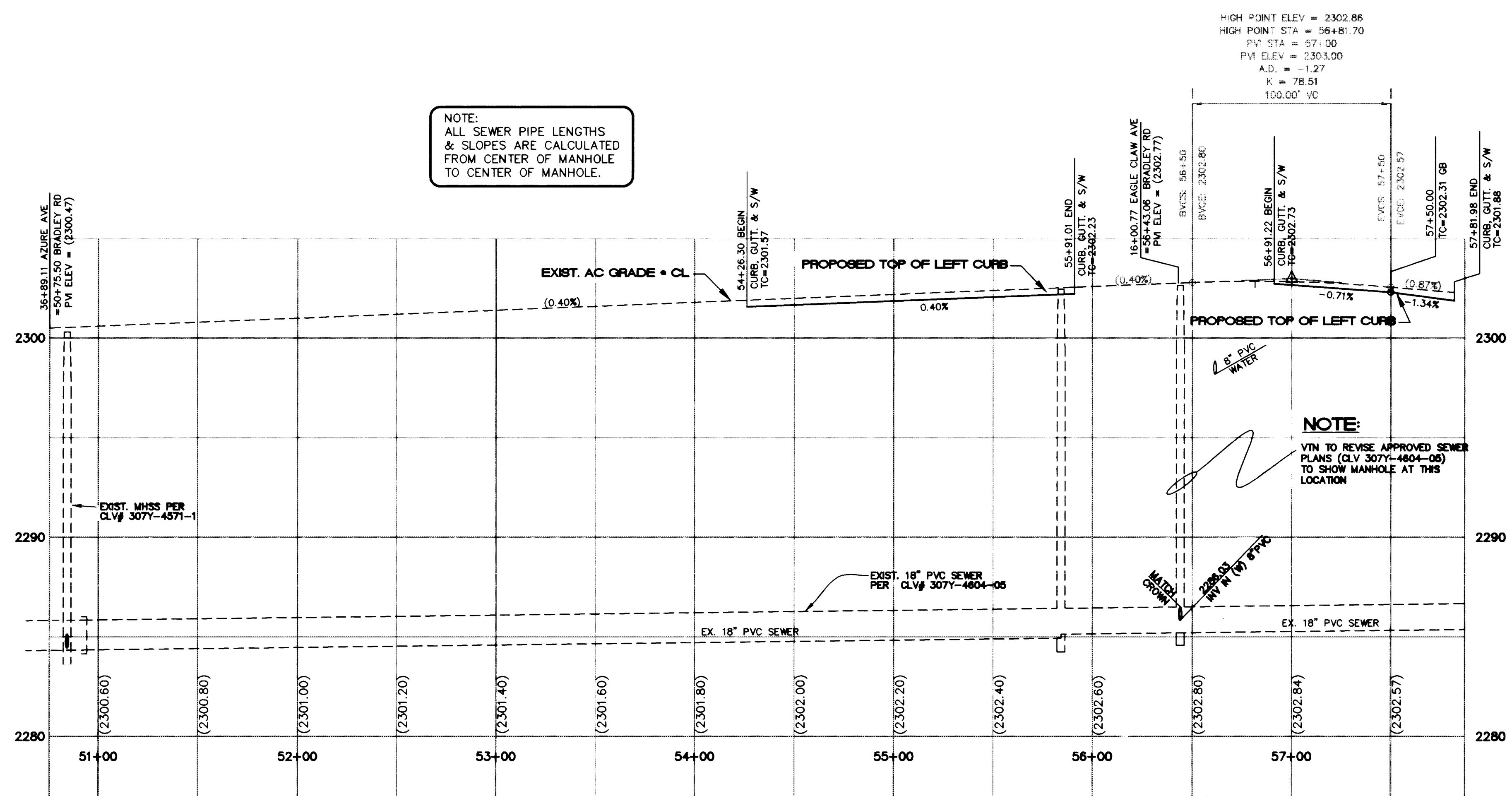
CURVE	DELTA	RADIUS	LENGTH	TANGENT
C20	86°29'24"	25'	37.74'	23.51'
C21	93°54'34"	25'	40.98'	26.77'



BASIS OF BEARING
NORTH 88°46'05" EAST BEING THE CENTERLINE OF AZURE DRIVE AS SHOWN ON RECORDS OF SURVEY FILE 52 PAGE 70 AND FILE 90 PAGE 44 IN THE OFFICE OF THE COUNTY RECORDER, CLARK COUNTY NEVADA.

BENCHMARK
CITY OF LAS VEGAS BENCHMARK #23 1LV9025N4 BEING AN ALCAP ON REBAR AT THE CENTERLINE INTERSECTION OF CENTENNIAL PKWY. AND BRADLEY ROAD.
NAVD88 ELEVATION: 2302.77' = 701.8865 METERS

BRADLEY ROAD (PUBLIC)



Pulte Homes
An American Favorite

CS Carter Burgess
6655 Bermuda Road
Las Vegas, NV 89119
Consultants in Planning, Engineering, Architecture, Construction Management, and Related Services (702) 638-5400 Fax (702) 638-5454

PLAN AND PROFILE
BRADLEY ROAD
EAGLE CREEK II
PHASE 1

DRAWN BY: RCW
DESIGNED BY: RCW
CHECKED BY: RRT
PROJECT NO: 98V189
SCALE: 1"=40' HORIZ. 1"=4' VERT.

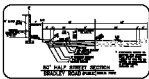
Professional Engineer Seal: ROBERT W. JOHNSON, CIVIL, No. 13698, State of Nevada, expires 12/31/2004.

SHEET 9 OF 19 SHEETS
DRAWING NO. 1074-4614-1

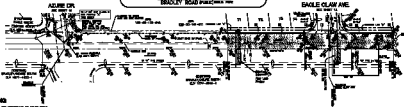
L:\98V189\Des\pht1\8189-09P.dwg Tue Aug 03 16:17:46 1999



563-8711
CITY OF SEASIDE



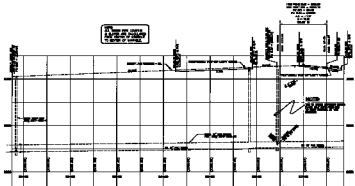
- CONSTRUCTION NOTES**
- 1. EXISTING UTILITIES ARE TO REMAIN UNLESS SHOWN OTHERWISE.
 - 2. EXISTING UTILITIES ARE TO BE DELETED AS SHOWN.
 - 3. EXISTING UTILITIES ARE TO BE DELETED AS SHOWN.
 - 4. EXISTING UTILITIES ARE TO BE DELETED AS SHOWN.
 - 5. EXISTING UTILITIES ARE TO BE DELETED AS SHOWN.
 - 6. EXISTING UTILITIES ARE TO BE DELETED AS SHOWN.
 - 7. EXISTING UTILITIES ARE TO BE DELETED AS SHOWN.
 - 8. EXISTING UTILITIES ARE TO BE DELETED AS SHOWN.
 - 9. EXISTING UTILITIES ARE TO BE DELETED AS SHOWN.
 - 10. EXISTING UTILITIES ARE TO BE DELETED AS SHOWN.



BASE OF BRIDGE
BRADLEY ROAD (PUBLIC)
 AT AND TO THE RIGHT OF THE BRIDGE STRUCTURE, SEASIDE, CALIFORNIA.

ENCLOSURE
PLANS AND PROFILE
 OF BRIDGE STRUCTURE.

BRADLEY ROAD (PUBLIC)



Public Utility
 City of Seaside, California

PLAN AND PROFILE
 BRADLEY ROAD
 BRIDGE CROSS SECTION
 PHASE 1

DATE: 11/15/11
 DRAWN BY: [Name]
 CHECKED BY: [Name]
 PROJECT NO.: [Number]

City of Seaside
 1000 Broadway, Seaside, CA 94132
 Phone: 563-8711
 Fax: 563-8712