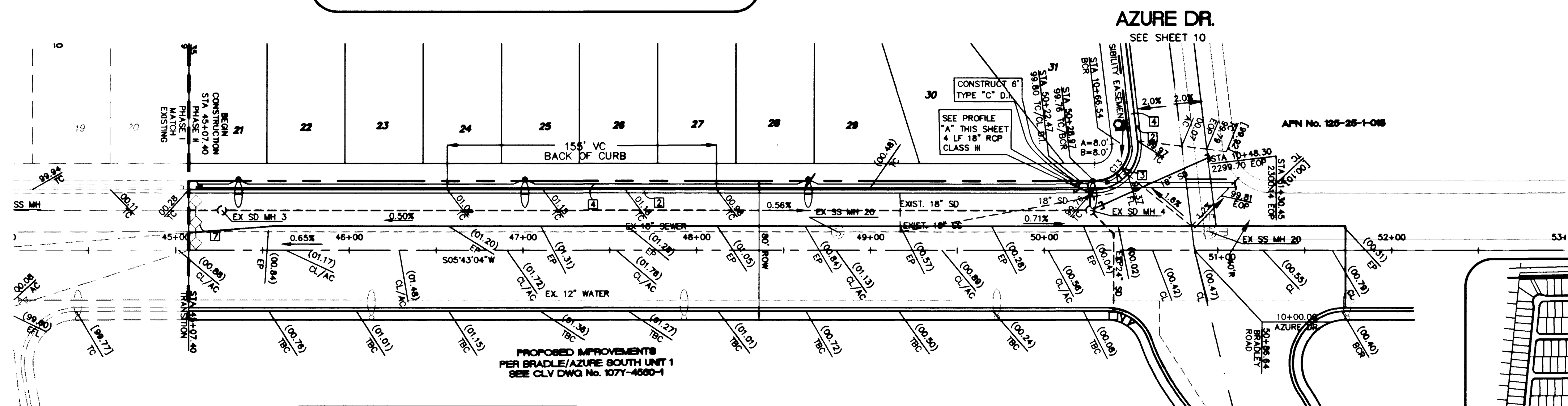
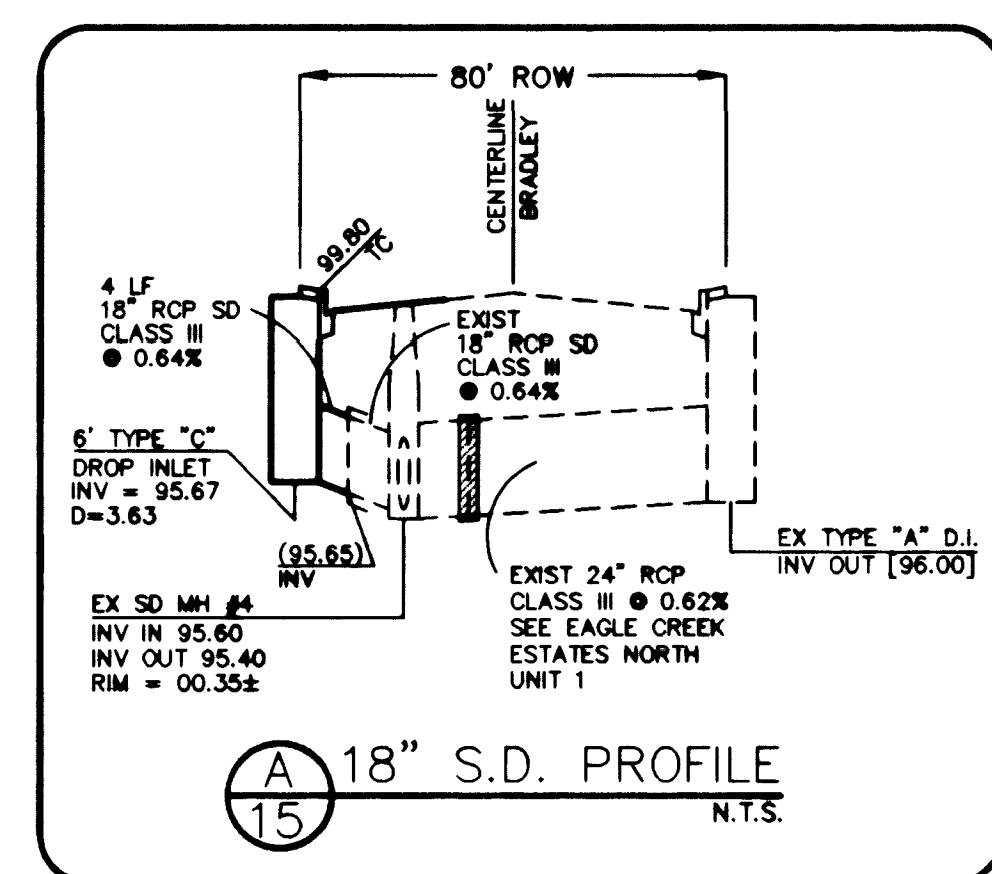
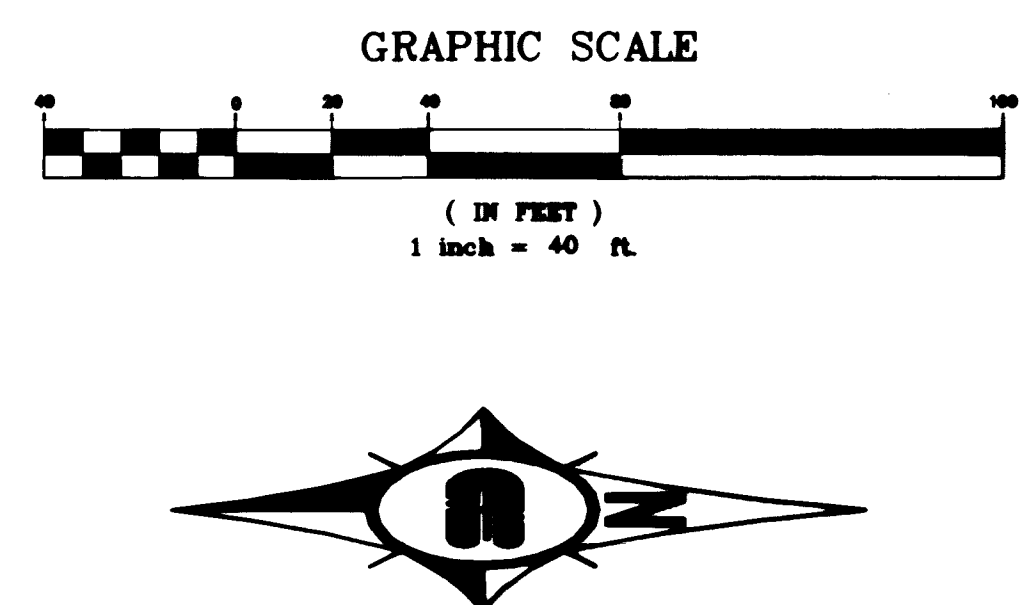
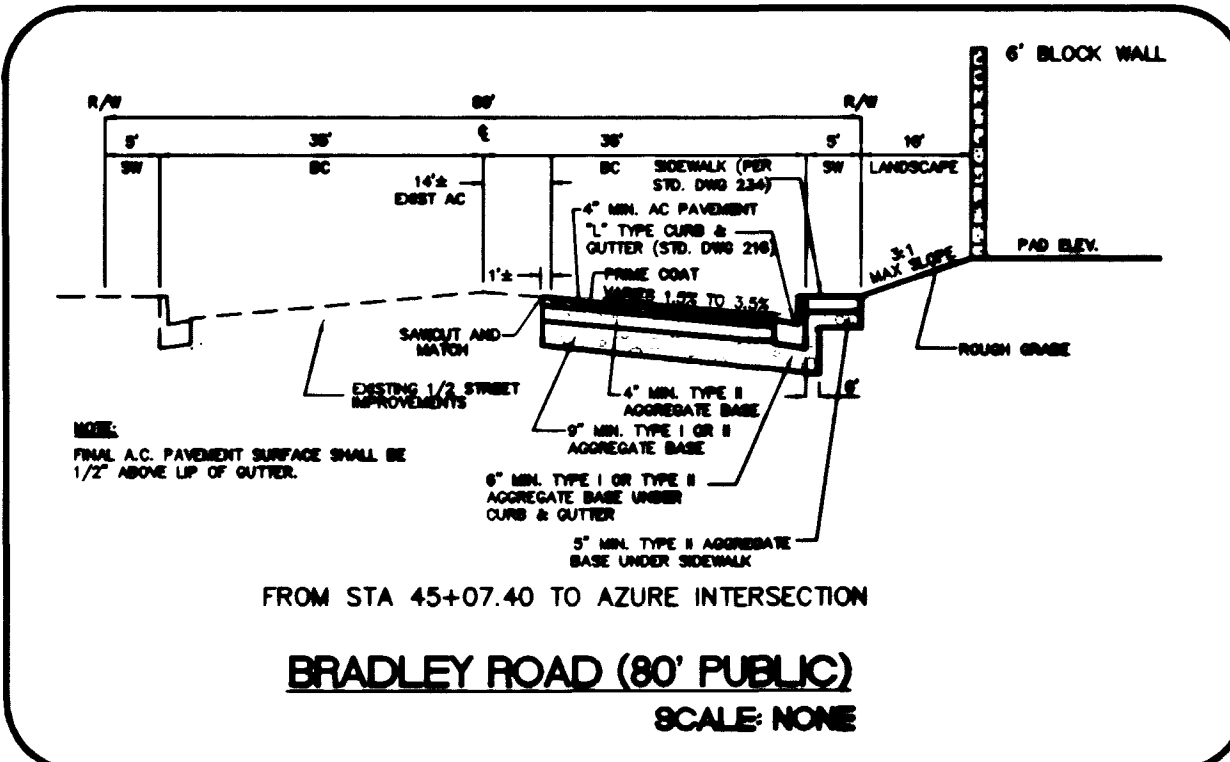


Call before you Dig
1-800-227-2600

SAFETY ALERT
Call before you Overhead
593-6111



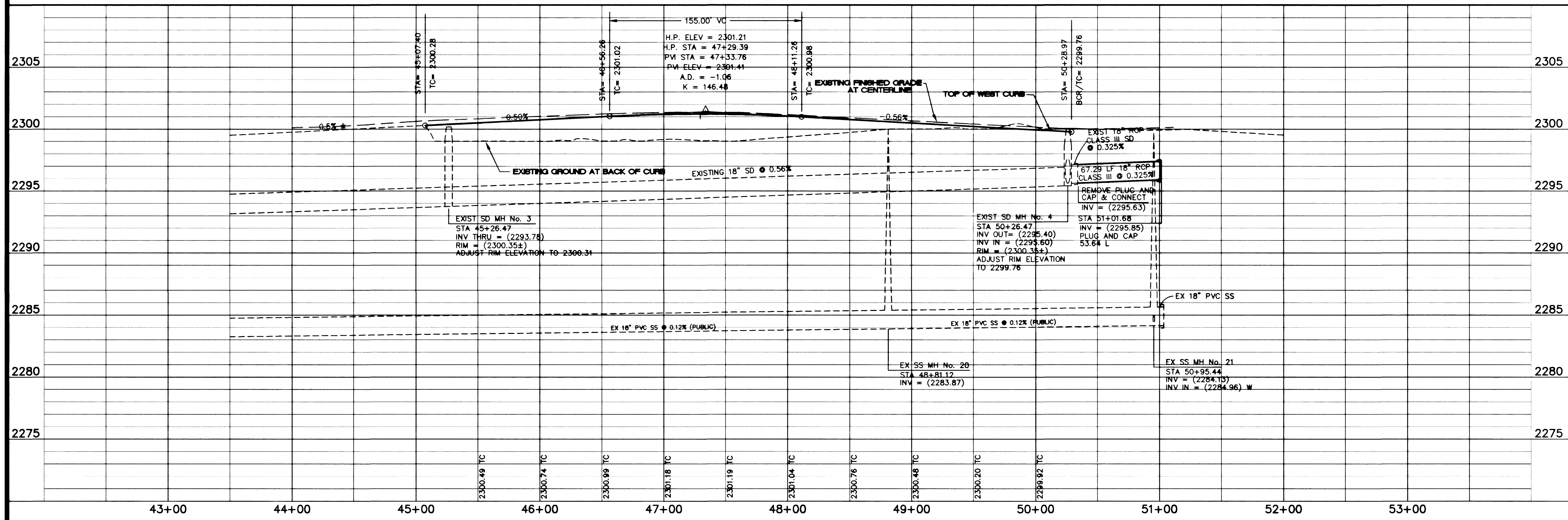
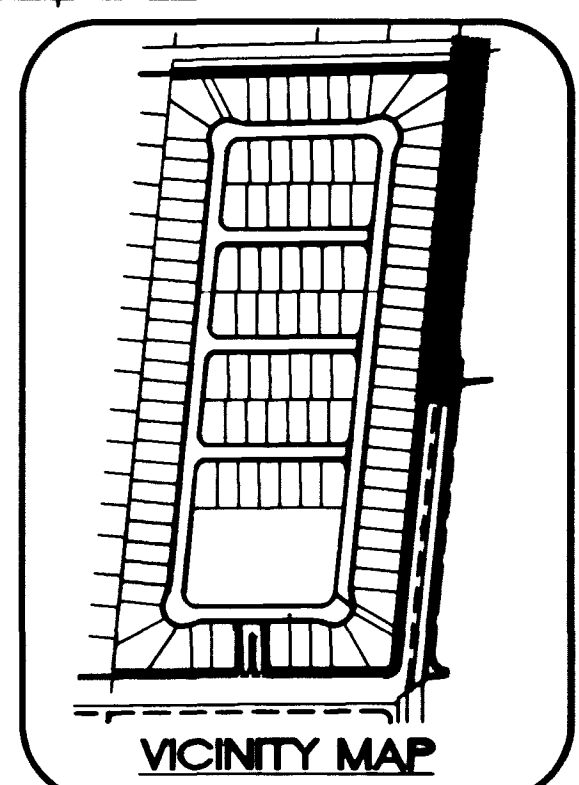
BASIS OF BEARING
NORTH 88°46'05" EAST BEING THE CENTERLINE OF AZURE DRIVE AS SHOWN ON RECORDS OF SURVEY FILE 52 PAGE 70 AND FILE 90 PAGE 44 IN THE OFFICE OF THE COUNTY RECORDER, CLARK COUNTY, NEVADA.

BENCHMARK
CITY OF LAS VEGAS BENCHMARK #23 1LV9025N4 BEING AN ALCAP ON REBAR AT THE CENTERLINE INTERSECTION OF CENTENNIAL PKWY. AND BRADLEY ROAD.
NAVD88 ELEVATION: 2302.77' = 701.8865 METERS

BACK OF CURB CURVE DATA

CURVE	DELTA	RADIUS	LENGTH	TANGENT
C13	96°56'59"	25.00'	42.30'	28.23'

BRADLEY ROAD (PUBLIC)



Pulte Homes
An American Favorite

Robert W. Johnson
Professional Engineer - State of Nevada
No. 13698
5/11/11

Cartier Burgess
6655 Bermuda Road
Las Vegas, NV 89119
Consultants in Planning, Engineering, Architecture, Construction Management, and Related Services (702) 808-5400 Fax (702) 938-5464

EAGLE CREEK ESTATES NORTH UNIT 2

SCALE: 1" = 40'

SHEET 1 OF 3 SHEETS
DRAWING NO. 107V-4571-2

