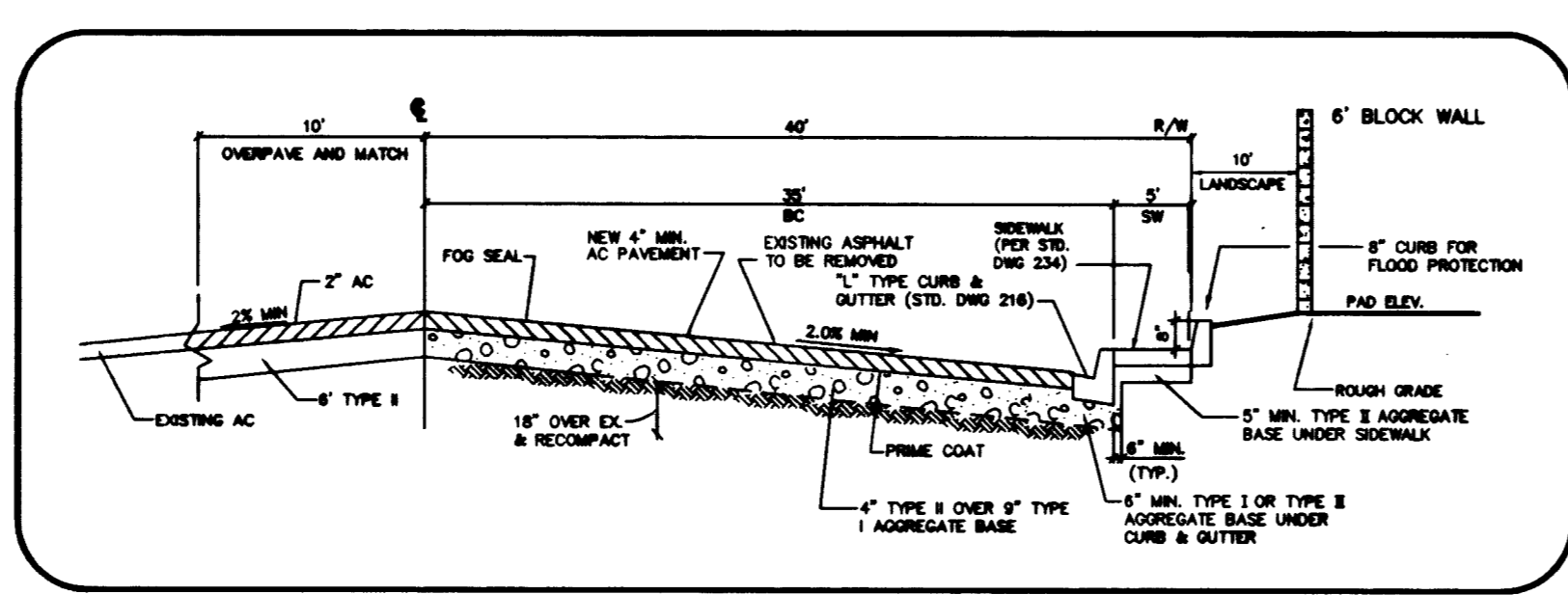
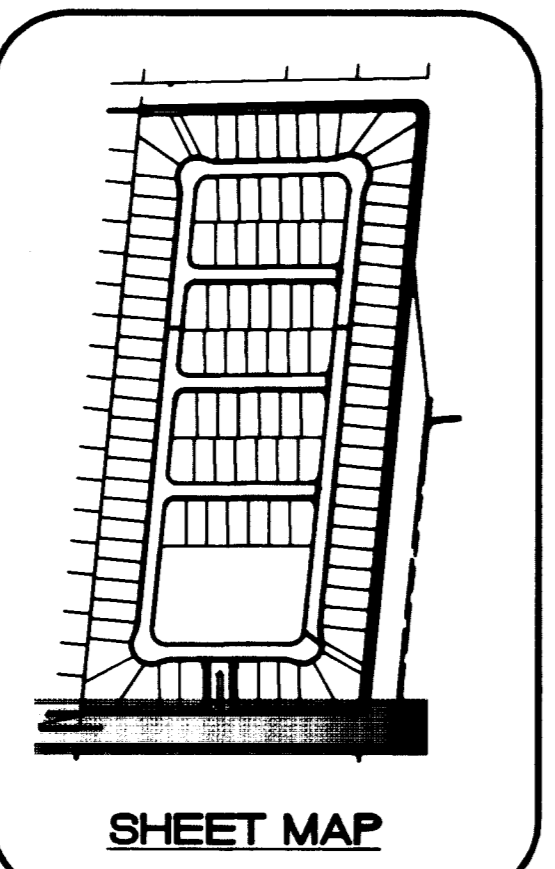


Call before you Dig.
1-800-227-2600

SAFETY ALERT
Call before you Overhead.
593-6111



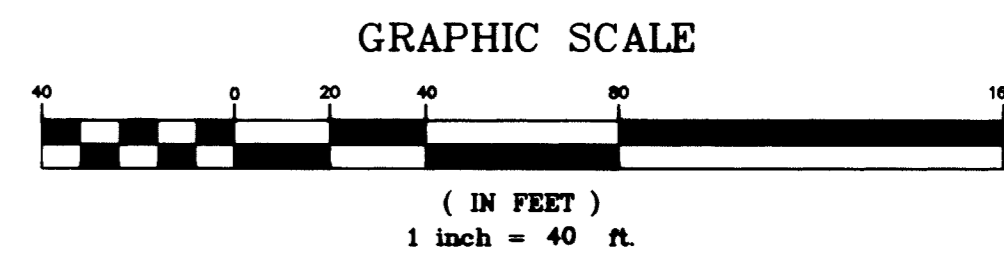
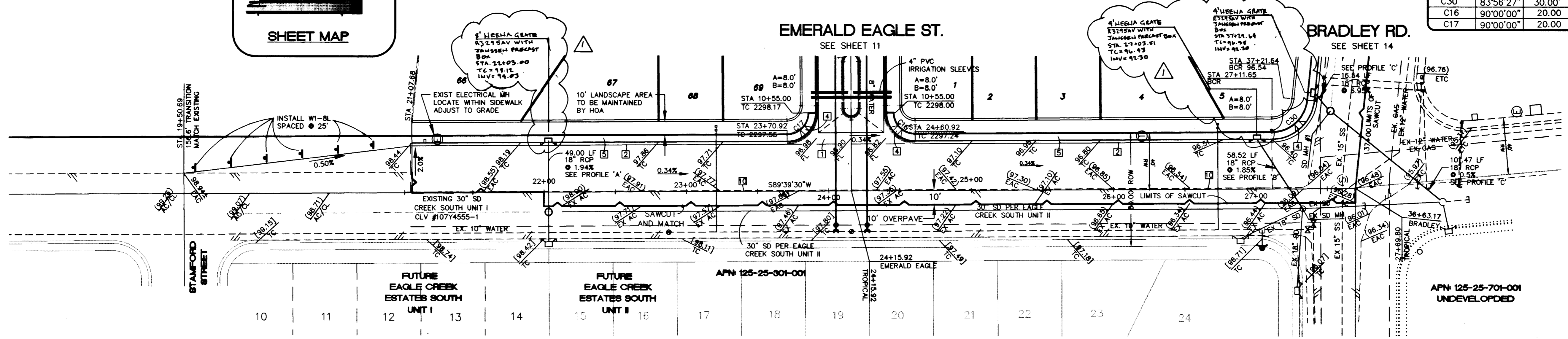
- CONSTRUCTION NOTES**
- CONSTRUCT 8" CONCRETE VALLEY GUTTER PER CLARK COUNTY AREA STD. DWG. NO. 228
 - CONSTRUCT "L" CURB AND GUTTER PER CLARK COUNTY AREA STD. DWG. NO. 216
 - CONSTRUCT TACK ON ISLAND CURB PER CLARK COUNTY STD. DWG. NO. 220
 - CONSTRUCT SIDEWALK RAMP (CASE I) PER CLARK COUNTY AREA STD. DWG. NO. 235
 - CONSTRUCT 5.0' WIDE CONCRETE SIDEWALK PER CLARK COUNTY AREA STD. DWG. NO. 234
 - CONSTRUCT 4.0' WIDE CONCRETE SIDEWALK PER CLARK COUNTY AREA STD. DWG. NO. 234
 - CONSTRUCT SIDEWALK DRAIN PER CLARK COUNTY AREA STD. DWG. NO. 236
 - INSTALL TEMPORARY END OF ROAD BARRICADE
 - CONSTRUCT 10.0' ROLL TO "L" TYPE CURB SEE DETAIL SHEET 16
 - SAWCUT EXIST. A.C. PAVING AND REMOVE
 - NO PARKING ANYTIME (PAINT CURB RED)
 - CONSTRUCT ROLL TYPE CURB AND GUTTER PER CLARK COUNTY AREA STD. DWG. NO. 217A

BASIS OF BEARING
NORTH 88°46'05" EAST BEING THE CENTERLINE OF AZURE DRIVE AS SHOWN ON RECORDS OF SURVEY FILE 52 PAGE 70 AND FILE 90 PAGE 44 IN THE OFFICE OF THE COUNTY RECORDER, CLARK COUNTY NEVADA.

BENCHMARK
CITY OF LAS VEGAS BENCHMARK #23 1LV9025N4 BEING AN ALCP ON REBAR AT THE CENTERLINE INTERSECTION OF CENTENNIAL PKWY AND BRADLEY ROAD.
NAVD88 ELEVATION: 2302.77' = 701.8865 METERS

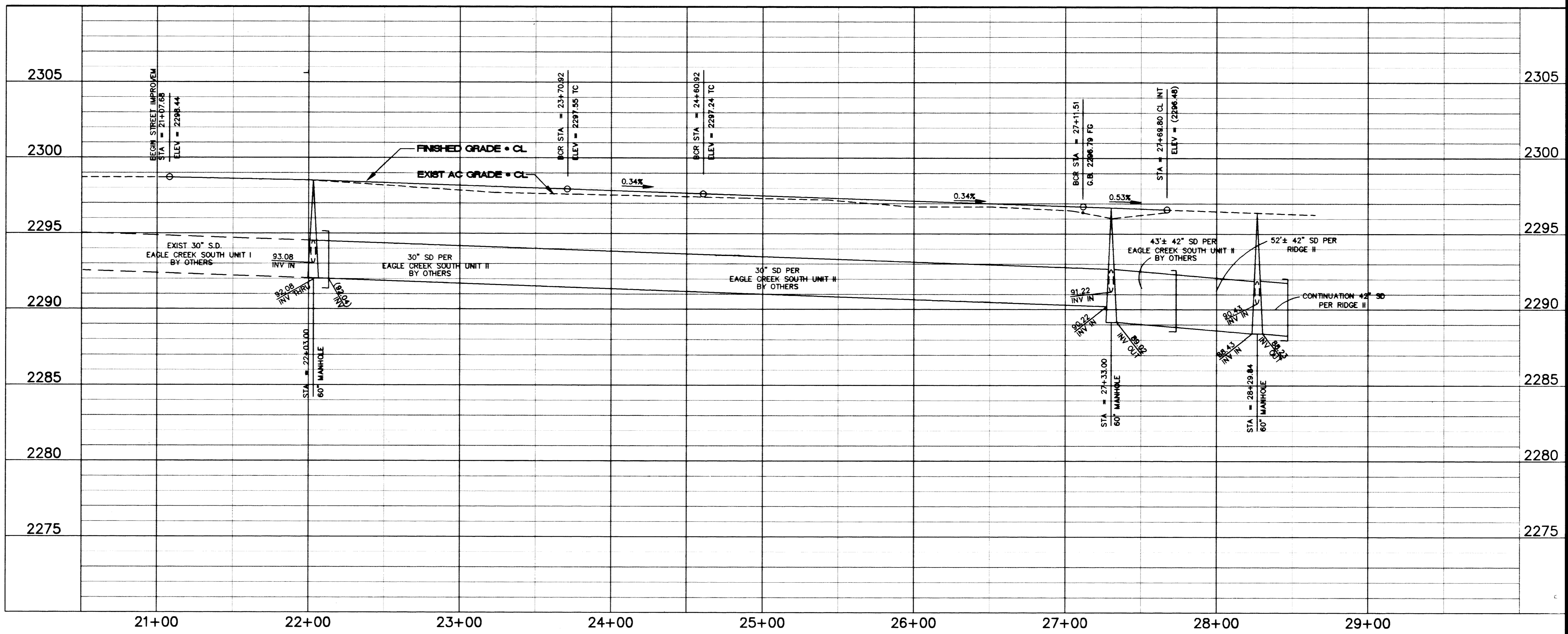
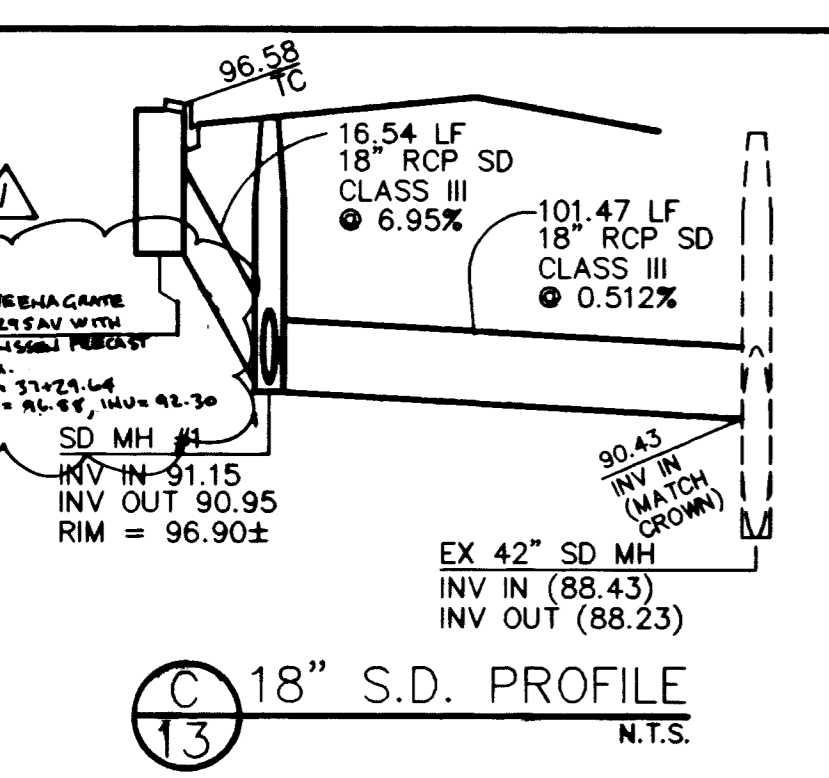
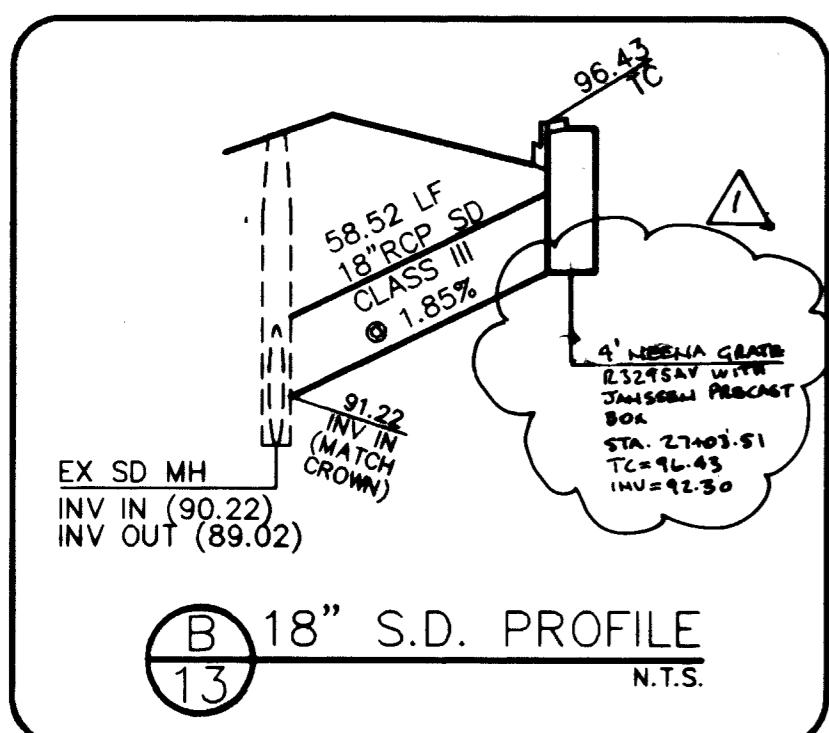
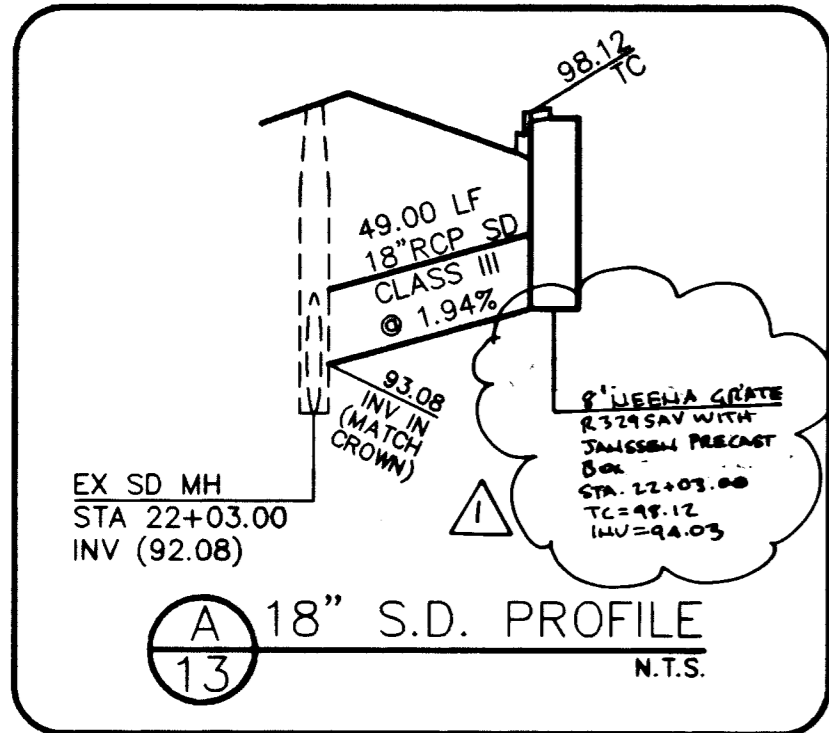
BACK OF CURB CURVE DATA

CURVE	DELTA	RADIUS	LENGTH	TANGENT
C30	83°56'27"	30.00'	43.95'	26.98'
C16	90°00'00"	20.00'	31.42'	20.00'
C17	90°00'00"	20.00'	31.42'	20.00'



TROPICAL PARKWAY (PUBLIC)

NOTE: [00.00] INDICATES DESIGN ELEVATIONS BY HMM ENGINEERS & SURVEYING INC. PER EAGLE CREEK SOUTH UNITS I & II.



Pulte Homes
An American Favorite

Carter Burgess
2955 East Sunset Road, Suite 105
Las Vegas, NV 89120
Consultants in Planning, Engineering, Architecture, Construction Management, and Related Services (702) 798-4007 Fax (702) 798-7058

PLAN AND PROFILE
PULTE HOMES
EAGLE CREEK ESTATES NORTH
UNIT 1

DRAWN BY: [Signature]
DESIGNED BY: [Signature]
CHECKED BY: [Signature]
PROJECT NO: 1074-4571-1

SCALE: 1" = 40' VERT.
1" = 100' HORIZ.

SHEET **C13**
13 OF 17 SHEETS
DRAWING NO. 1074-4571-1

Professional Engineer Seal: [Signature]
Civil Engineer
No. 9655

10992 (S) 12955

L:\88V052\DESIGN\8052PPS.DWG
THIS SHEET HAS BEEN REPLOTTED

