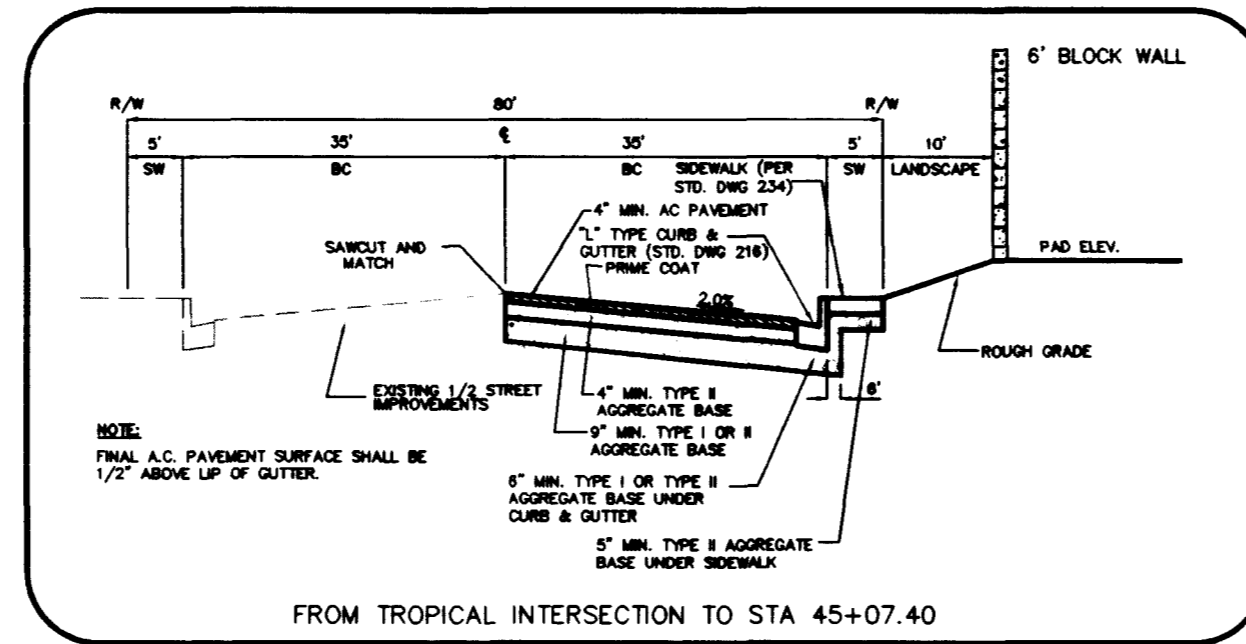


Avoid cutting underground utility lines. Call before you dig.

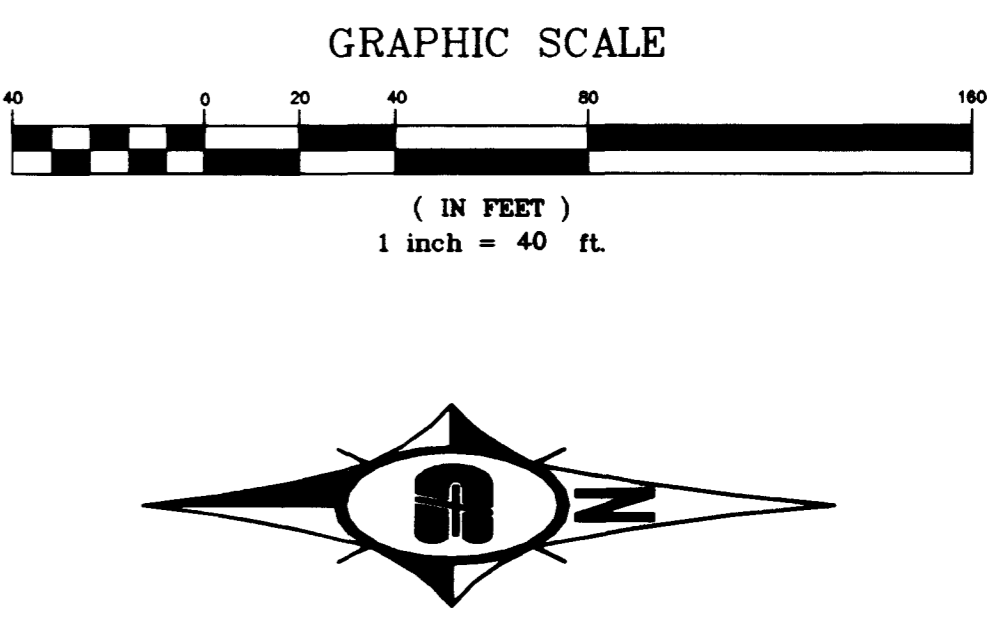
**Call before you Dig.**  
1-800-227-2600

**SAFETY ALERT**

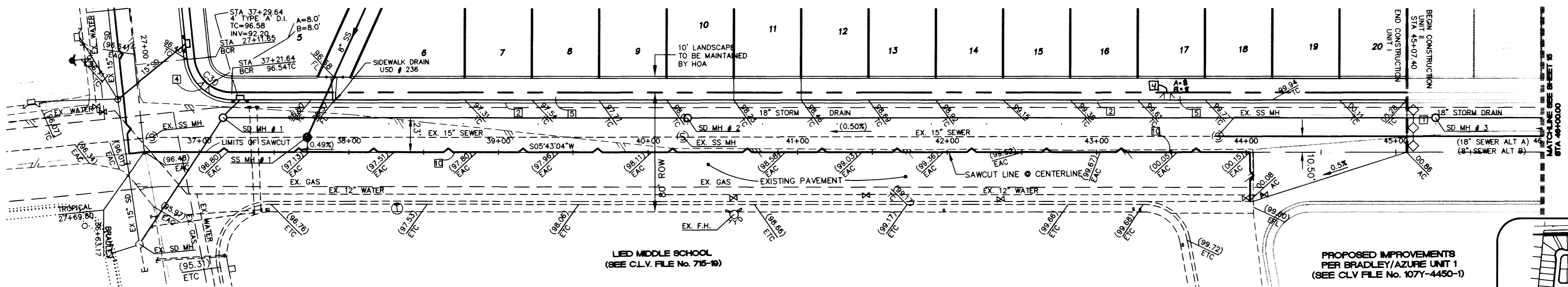
**Call before you Overhead**  
593-6111



- CONSTRUCTION NOTES**
- CONSTRUCT 8" CONCRETE VALLEY GUTTER PER CLARK COUNTY AREA STD. DWG. NO. 228
  - CONSTRUCT "L" CURB AND GUTTER PER CLARK COUNTY AREA STD. DWG. NO. 216
  - CONSTRUCT TACK ON ISLAND CURB PER CLARK COUNTY STD. DWG. NO. 220
  - CONSTRUCT SIDEWALK RAMP (CASE I) PER CLARK COUNTY AREA STD. DWG. NO. 235
  - CONSTRUCT 5.0' WIDE CONCRETE SIDEWALK PER CLARK COUNTY AREA STD. DWG. NO. 234
  - CONSTRUCT 4.0' WIDE CONCRETE SIDEWALK PER CLARK COUNTY AREA STD. DWG. NO. 234
  - CONSTRUCT SIDEWALK DRAIN PER CLARK COUNTY AREA STD. DWG. NO. 236
  - INSTALL TEMPORARY END OF ROAD BARRICADE
  - CONSTRUCT 10.0' ROLL TO "L" TYPE CURB SEE DETAIL SHEET 16
  - SAWCUT EXIST. A.C. PAVING AND REMOVE
  - NO PARKING ANYTIME (PAINT CURB RED)
  - CONSTRUCT ROLL TYPE CURB AND GUTTER PER CLARK COUNTY AREA STD. DWG. NO. 217A



**TROPICAL PARKWAY**  
SEE SHEET 13



**BASIS OF BEARING**

NORTH 88°46'05" EAST BEING THE CENTERLINE OF AZURE DRIVE AS SHOWN ON RECORDS OF SURVEY FILE 52 PAGE 70 AND FILE 90 PAGE 44 IN THE OFFICE OF THE COUNTY RECORDER, CLARK COUNTY, NEVADA.

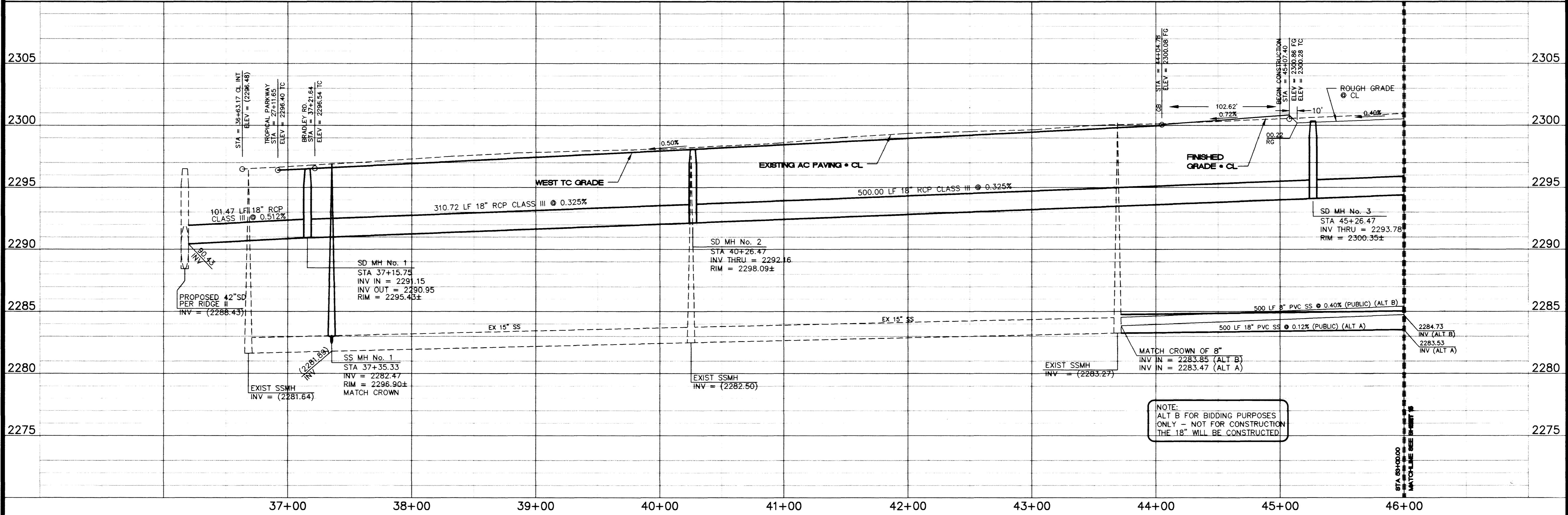
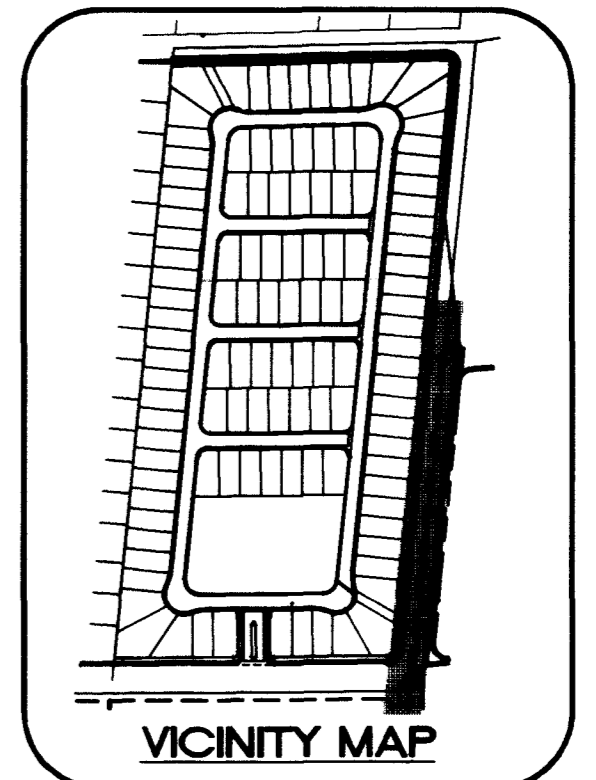
**BENCHMARK**

CITY OF LAS VEGAS BENCHMARK #23 1LV9025N4 BEING AN ALCAP ON REBAR AT THE CENTERLINE INTERSECTION OF CENTENNIAL PKWY. AND BRADLEY ROAD.  
NAVD88 ELEVATION: 2302.77' = 701.8865 METERS

**BACK OF CURB CURVE DATA**

CURVE	DELTA	RADIUS	LENGTH	TANGENT
C30	83°56'27"	30.00'	43.95'	26.98'

**BRADLEY ROAD (PUBLIC)**



**Pulte Homes**  
An American Favorite

**Carlter Burgess**  
2855 East Sunset Road, Suite 105  
Las Vegas, NV 89120  
Consultants in Planning, Engineering, Architecture,  
Construction Management, and Related Services  
(702) 798-1007 Fax (702) 798-7056

**PLAN AND PROFILE**

**PULTE HOMES EAGLE CREEK ESTATES NORTH UNIT 1**

SCALE: 1"=40' HORIZ. 1"=4' VERT.

PROJECT NO. BR000010

DRAWN BY: [Signature]

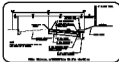
DESIGNED BY: [Signature]

CHECKED BY: [Signature]

PROJECT NO. BR000010

**REGISTERED PROFESSIONAL ENGINEER - STATE OF NEVADA**  
RANDALL J. [Signature]  
CIVIL ENGINEER  
No. 9655

**SHEET C4**  
14 OF 17 SHEETS  
DRAWING NO. 107Y-4571-1



- CONSTRUCTION NOTES**
- 1. SEE SHEET 1001 FOR TOTAL PLAN
  - 2. SEE SHEET 1002 FOR TOTAL PLAN
  - 3. SEE SHEET 1003 FOR TOTAL PLAN
  - 4. SEE SHEET 1004 FOR TOTAL PLAN
  - 5. SEE SHEET 1005 FOR TOTAL PLAN
  - 6. SEE SHEET 1006 FOR TOTAL PLAN
  - 7. SEE SHEET 1007 FOR TOTAL PLAN
  - 8. SEE SHEET 1008 FOR TOTAL PLAN
  - 9. SEE SHEET 1009 FOR TOTAL PLAN
  - 10. SEE SHEET 1010 FOR TOTAL PLAN



TROPICAL PARKWAY  
BY SHEET 10

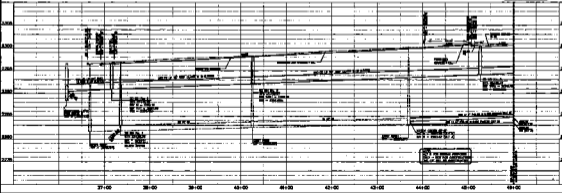


**BASE OF BRIDGES**  
 SEE SHEET 1001 FOR TOTAL PLAN  
 SEE SHEET 1002 FOR TOTAL PLAN  
 SEE SHEET 1003 FOR TOTAL PLAN  
 SEE SHEET 1004 FOR TOTAL PLAN  
 SEE SHEET 1005 FOR TOTAL PLAN  
 SEE SHEET 1006 FOR TOTAL PLAN  
 SEE SHEET 1007 FOR TOTAL PLAN  
 SEE SHEET 1008 FOR TOTAL PLAN  
 SEE SHEET 1009 FOR TOTAL PLAN  
 SEE SHEET 1010 FOR TOTAL PLAN

**BRIDGE MARK**  
 SEE SHEET 1001 FOR TOTAL PLAN  
 SEE SHEET 1002 FOR TOTAL PLAN  
 SEE SHEET 1003 FOR TOTAL PLAN  
 SEE SHEET 1004 FOR TOTAL PLAN  
 SEE SHEET 1005 FOR TOTAL PLAN  
 SEE SHEET 1006 FOR TOTAL PLAN  
 SEE SHEET 1007 FOR TOTAL PLAN  
 SEE SHEET 1008 FOR TOTAL PLAN  
 SEE SHEET 1009 FOR TOTAL PLAN  
 SEE SHEET 1010 FOR TOTAL PLAN

BASE OF OVERPASS BRIDGE  
SEE SHEET 1001 FOR TOTAL PLAN  
SEE SHEET 1002 FOR TOTAL PLAN

### BRADLEY ROAD (PUBLIC)



**Public Hearing**  
 10/15/2010 10:00 AM  
 10/15/2010 10:00 AM  
 10/15/2010 10:00 AM

**PLANS AND PERMITS**  
 PLANS 1001-1010  
 PERMITS 1001-1010

**10/15/2010 10:00 AM**