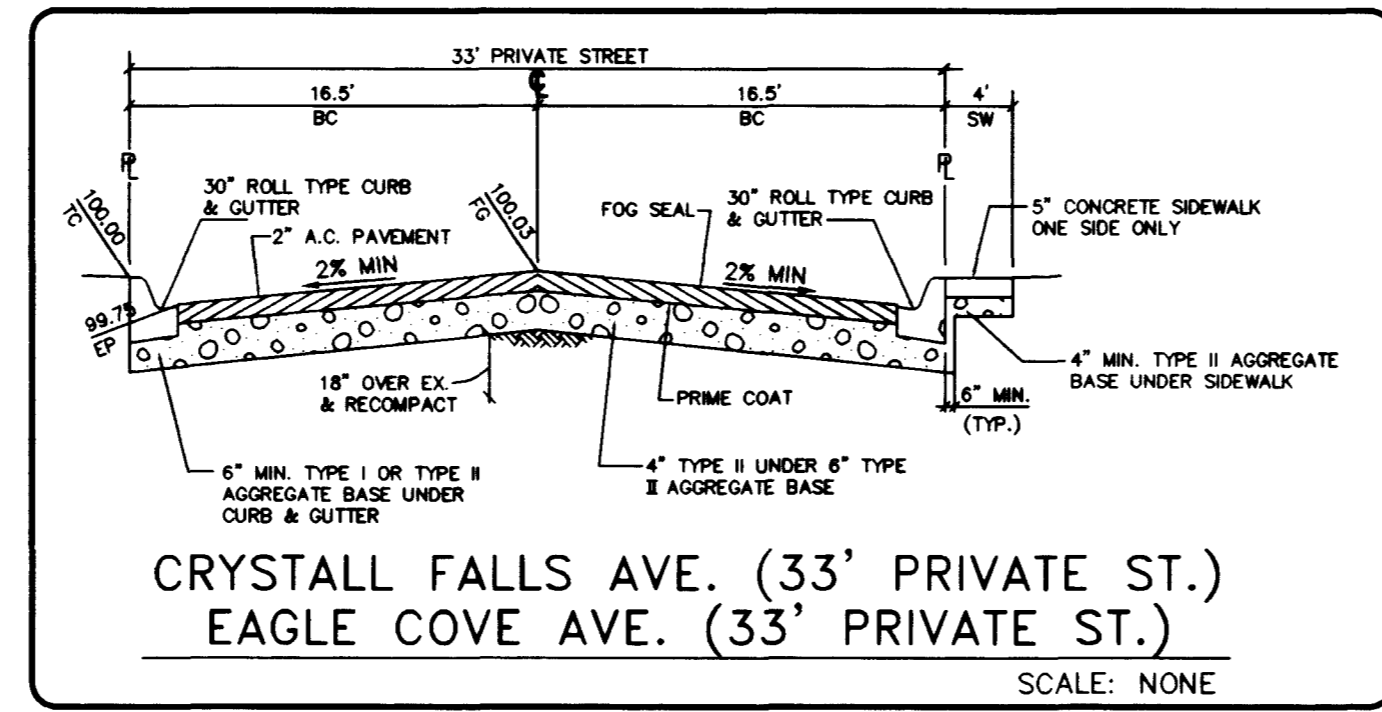
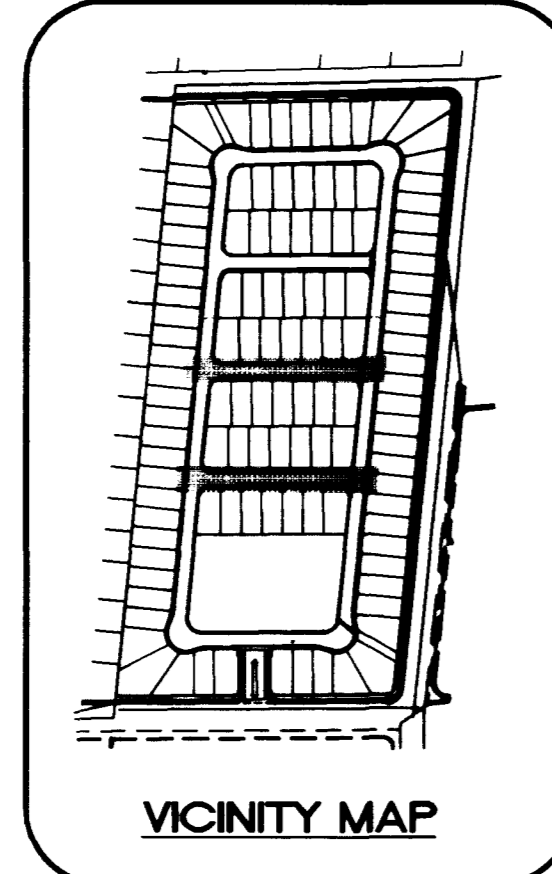
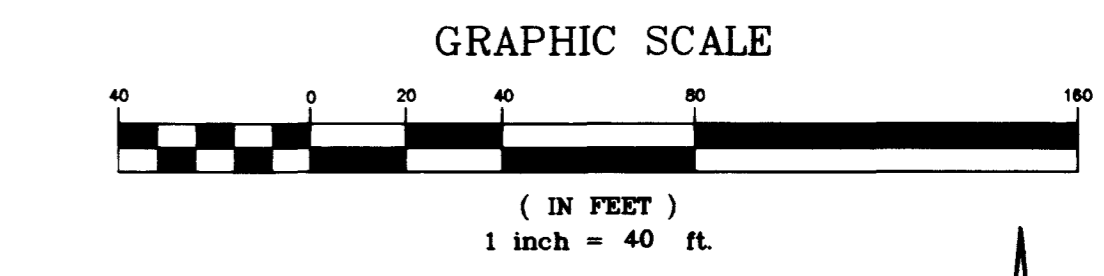


Call before you Dig.  
1-800-227-2600

SAFETY ALERT  
Call before you Overhead.  
593-6111

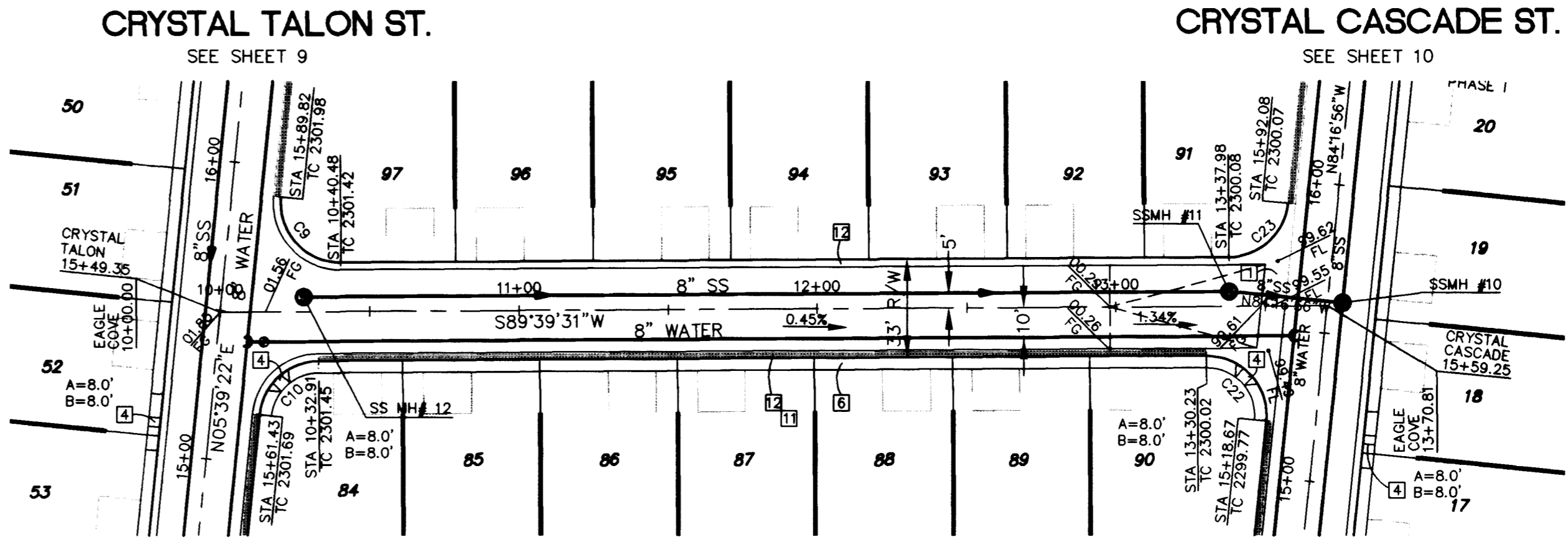
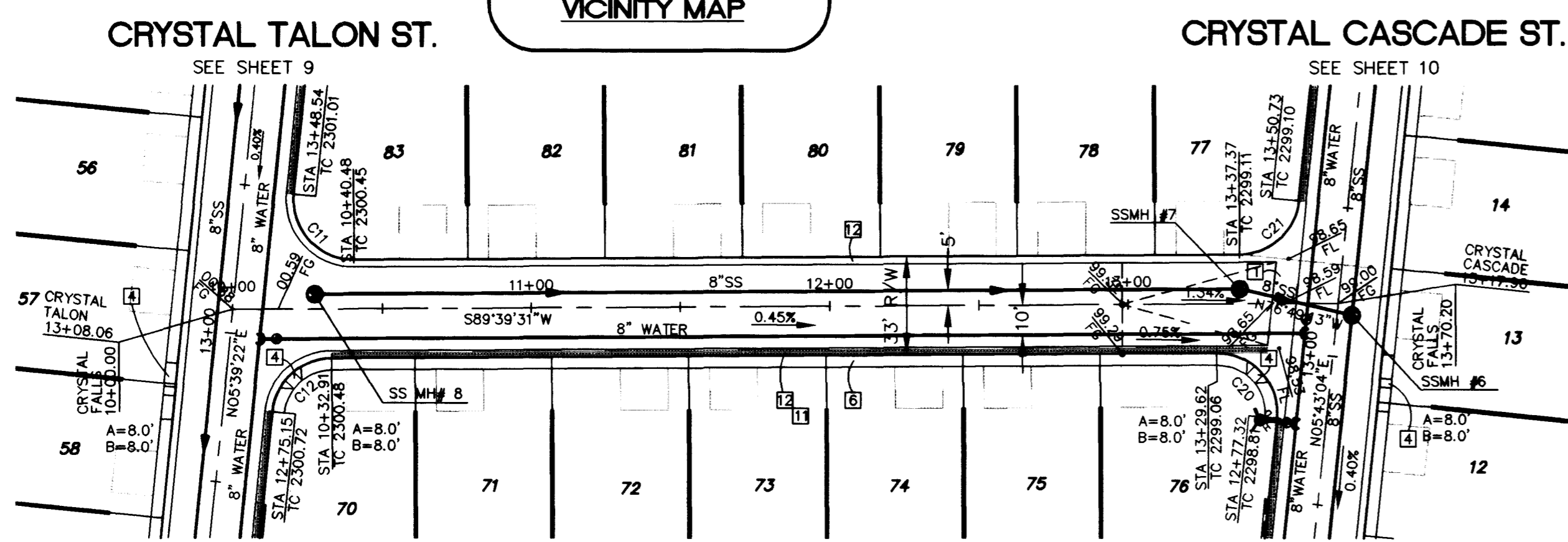


- CONSTRUCTION NOTES**
- CONSTRUCT 8" CONCRETE VALLEY GUTTER PER CLARK COUNTY AREA STD. DWG. NO. 228
  - CONSTRUCT "L" CURB AND GUTTER PER CLARK COUNTY AREA STD. DWG. NO. 216
  - CONSTRUCT TACK ON ISLAND CURB PER CLARK COUNTY STD. DWG. NO. 220
  - CONSTRUCT SIDEWALK RAMP (CASE I) PER CLARK COUNTY AREA STD. DWG. NO. 235
  - CONSTRUCT 5.0' WIDE CONCRETE SIDEWALK PER CLARK COUNTY AREA STD. DWG. NO. 234
  - CONSTRUCT 4.0' WIDE CONCRETE SIDEWALK PER CLARK COUNTY AREA STD. DWG. NO. 234
  - CONSTRUCT SIDEWALK DRAIN PER CLARK COUNTY AREA STD. DWG. NO. 236
  - INSTALL TEMPORARY END OF ROAD BARRICADE
  - CONSTRUCT 10.0' ROLL TO "L" TYPE CURB SEE DETAIL SHEET 16
  - SAWCUT EXIST. A.C. PAVING AND REMOVE
  - NO PARKING ANYTIME (PAINT CURB RED)
  - CONSTRUCT ROLL TYPE CURB AND GUTTER PER CLARK COUNTY AREA STD. DWG. NO. 217A



**BACK OF CURB CURVE DATA**

CURVE	DELTA	RADIUS	LENGTH	TANGENT
C9	95°54'51"	20.00	33.48	22.18
C10	84°05'09"	20.00	29.35	18.04
C11	95°54'51"	20.00	33.48	22.18
C12	84°05'09"	20.00	29.35	18.04
C20	96°03'33"	20.00	33.53	22.24
C21	83°56'27"	20.00	29.30	17.99
C22	96°03'33"	20.00	33.53	22.24
C23	83°56'27"	20.00	29.30	17.99

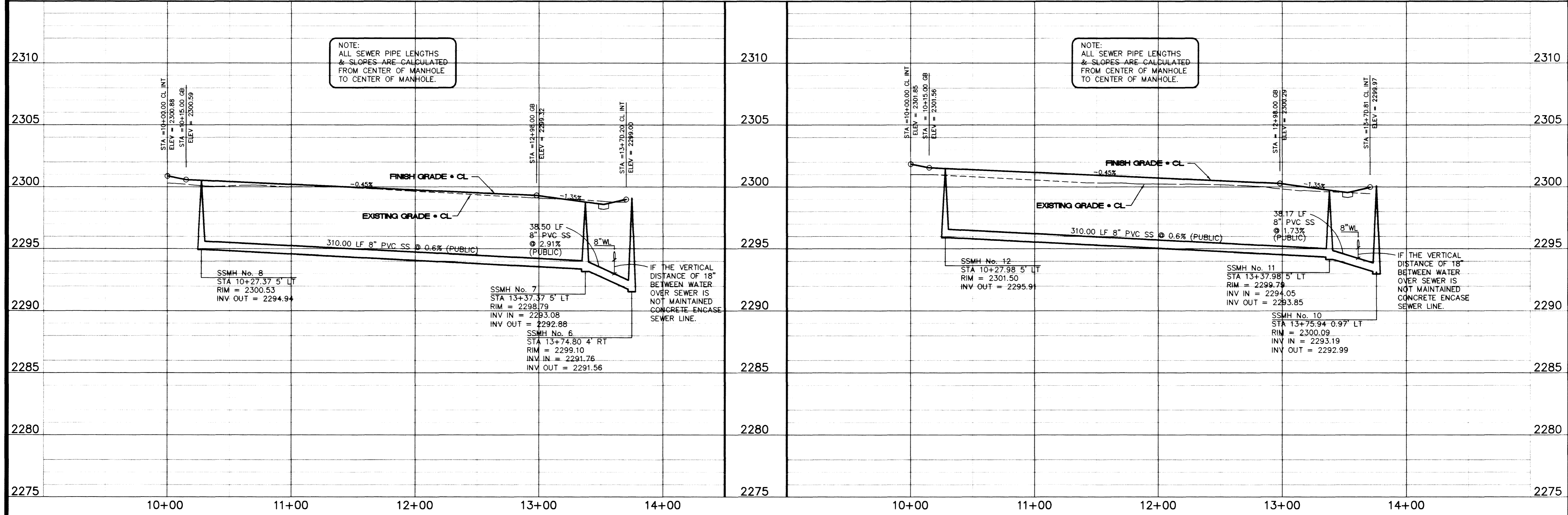


**BASIS OF BEARING**  
NORTH 88°46'05" EAST BEING THE CENTERLINE OF AZURE DRIVE AS SHOWN ON RECORDS OF SURVEY FILE 52 PAGE 70 AND FILE 90 PAGE 44 IN THE OFFICE OF THE COUNTY RECORDER, CLARK COUNTY NEVADA.

**BENCHMARK**  
CITY OF LAS VEGAS BENCHMARK #23 1LV9025N4 BEING AN ALCAP ON REBAR AT THE CENTERLINE INTERSECTION OF CENTENNIAL PKWY. AND BRADLEY ROAD.  
NAVD88 ELEVATION: 2302.77' = 701.8865 METERS

**CRYSTALL FALLS AVE.** (PRIVATE STREET W/ PUE, PUBLIC SEWER EASEMENT, PUBLIC DRAINAGE EASEMENT TO BE PRIVATELY MAINTAINED)  
(MAINTAINED BY H.O.A.)

**EAGLE COVE AVE.** (PRIVATE STREET W/ PUE, PUBLIC SEWER EASEMENT, PUBLIC DRAINAGE EASEMENT TO BE PRIVATELY MAINTAINED)  
(MAINTAINED BY H.O.A.)



**Pulte Homes**  
An American Favorite

**Cartier Burgess**  
2865 East Sunset Road, Suite 105  
Las Vegas, NV 89120  
Consultants in Planning, Engineering, Architecture, Construction Management, and Related Services  
(702) 798-0007 Fax (702) 798-7066

**PLAN AND PROFILE**

**PULTE HOMES EAGLE CREEK ESTATES NORTH UNIT 1**

SCALE: 1"=40' HORIZ. 1"=4' VERT.

PROJECT NO: 98052PP4

DESIGNED BY: [Signature]

CHECKED BY: [Signature]

DRAWN BY: [Signature]

NOVEMBER 11, 2008

NO. 9655

**SHEET C12**  
12 OF 17 SHEETS  
DRAWING NO. 1074-4571-1

