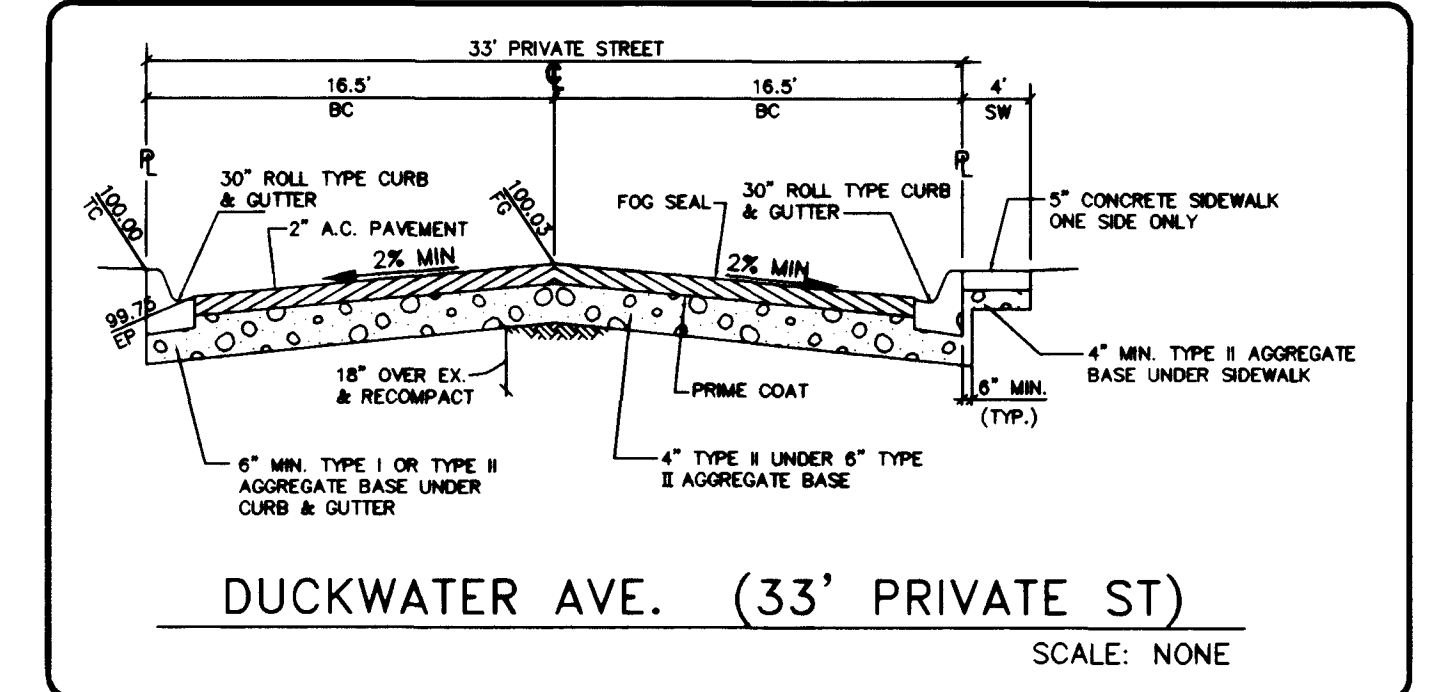
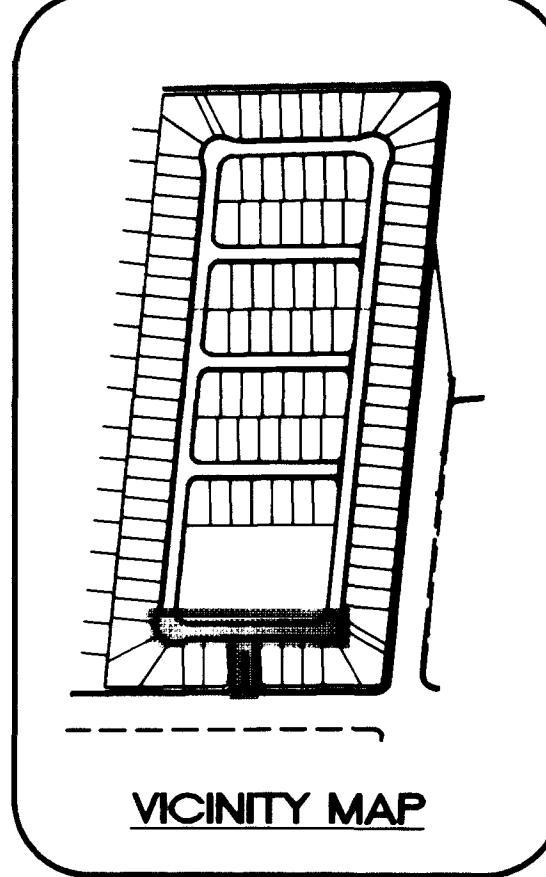
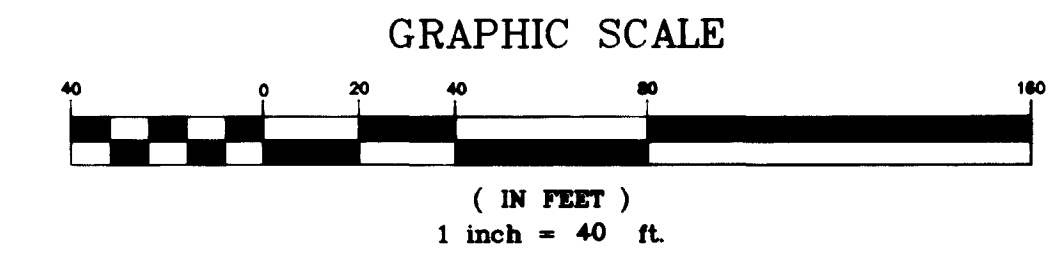


Call before you Dig.
1-800-227-2600

Call before you Overhead.
593-6111

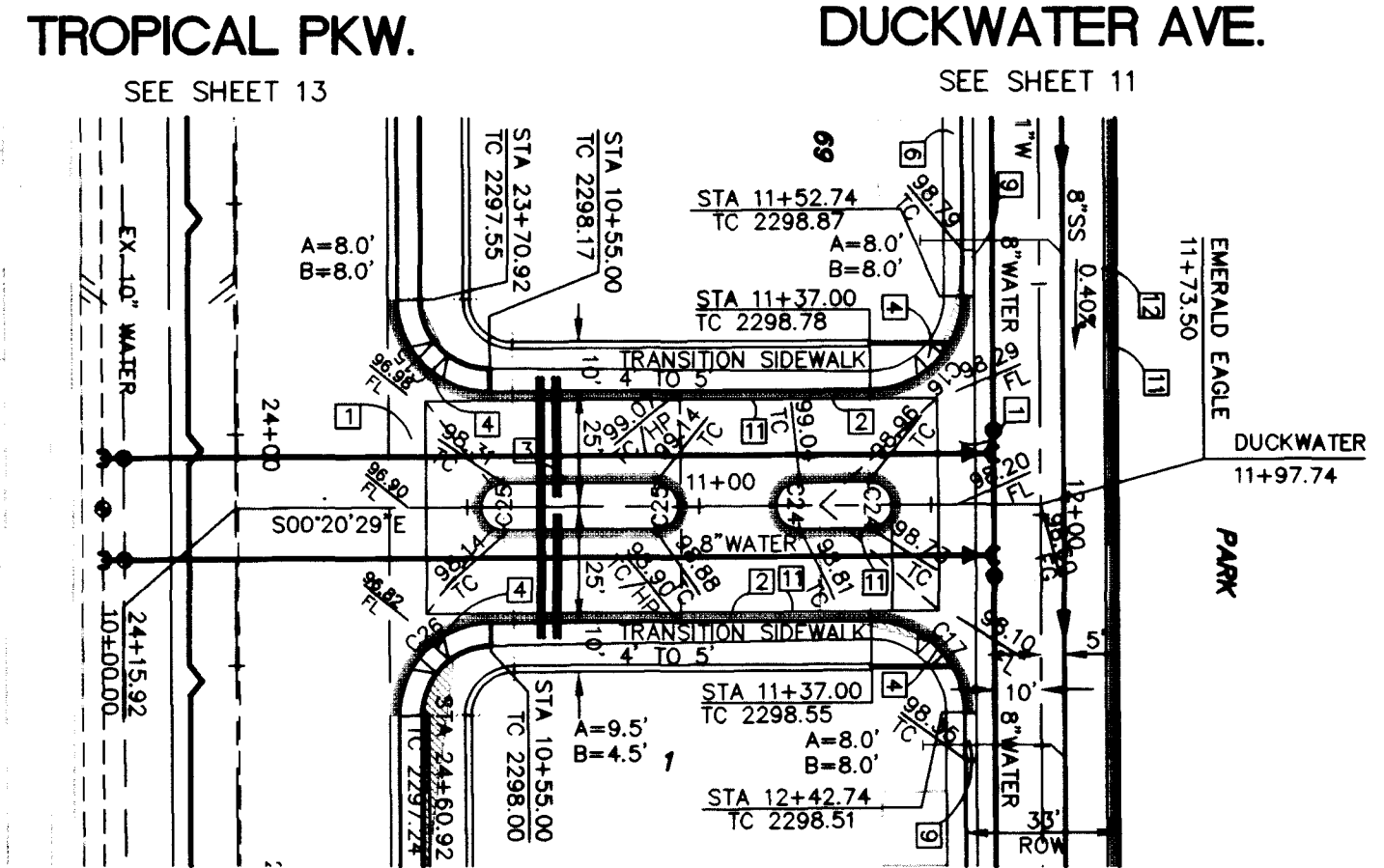
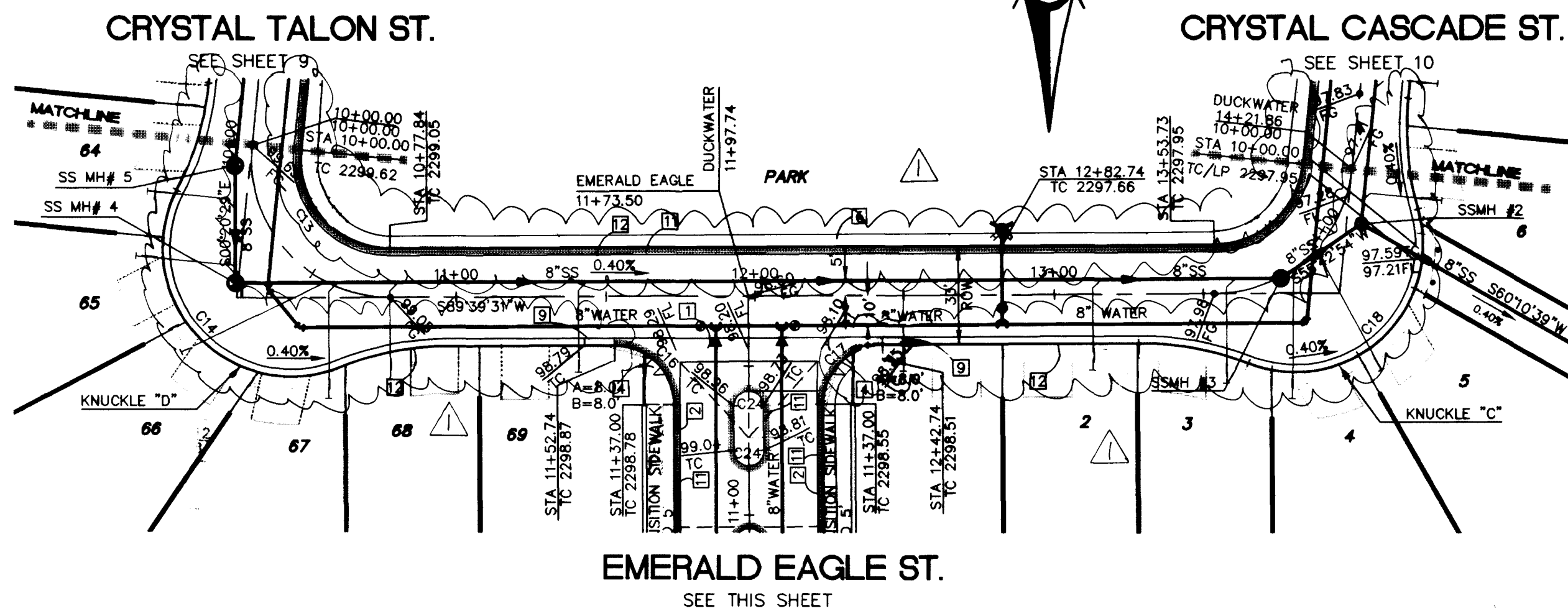


- CONSTRUCTION NOTES**
- CONSTRUCT 8" CONCRETE VALLEY GUTTER PER CLARK COUNTY AREA STD. DWG. NO. 228
 - CONSTRUCT "L" CURB AND GUTTER PER CLARK COUNTY AREA STD. DWG. NO. 216
 - CONSTRUCT TACK ON ISLAND CURB PER CLARK COUNTY STD. DWG. NO. 220
 - CONSTRUCT SIDEWALK RAMP (CASE 1) PER CLARK COUNTY AREA STD. DWG. NO. 235
 - CONSTRUCT 5.0' WIDE CONCRETE SIDEWALK PER CLARK COUNTY AREA STD. DWG. NO. 234
 - CONSTRUCT 4.0' WIDE CONCRETE SIDEWALK PER CLARK COUNTY AREA STD. DWG. NO. 234
 - CONSTRUCT SIDEWALK DRAIN PER CLARK COUNTY AREA STD. DWG. NO. 236
 - INSTALL TEMPORARY END OF ROAD BARRICADE
 - CONSTRUCT 10.0' ROLL TO "L" TYPE CURB SEE DETAIL SHEET 16
 - SAWCUT EXIST. A.C. PAVING AND REMOVE
 - NO PARKING ANYTIME (PAINT CURB RED)
 - CONSTRUCT ROLL TYPE CURB AND GUTTER PER CLARK COUNTY AREA STD. DWG. NO. 217A



BACK OF CURB CURVE DATA

CURVE	DELTA	RADIUS	LENGTH	TANGENT
C1	21°33'15"	100.00	37.62	19.03
C2	21°33'15"	100.00	37.62	19.03
C7	21°33'15"	100.00	37.62	19.03
C8	21°33'15"	100.00	37.62	19.03
C13	95°54'51"	30.00	50.22	33.27
C14	139°01'22"	43.00	104.34	115.08
C15	90°00'00"	20.00	31.42	20.00
C16	90°00'00"	20.00	31.42	20.00
C17	90°00'00"	20.00	31.42	20.00
C18	127°02'58"	43.00	95.35	86.34
C19	83°56'27"	30.00	43.95	26.98
C24	180°00'00"	5.00	15.71	---
C25	180°00'00"	5.00	15.71	---
C26	90°00'00"	20.00	31.42	20.00

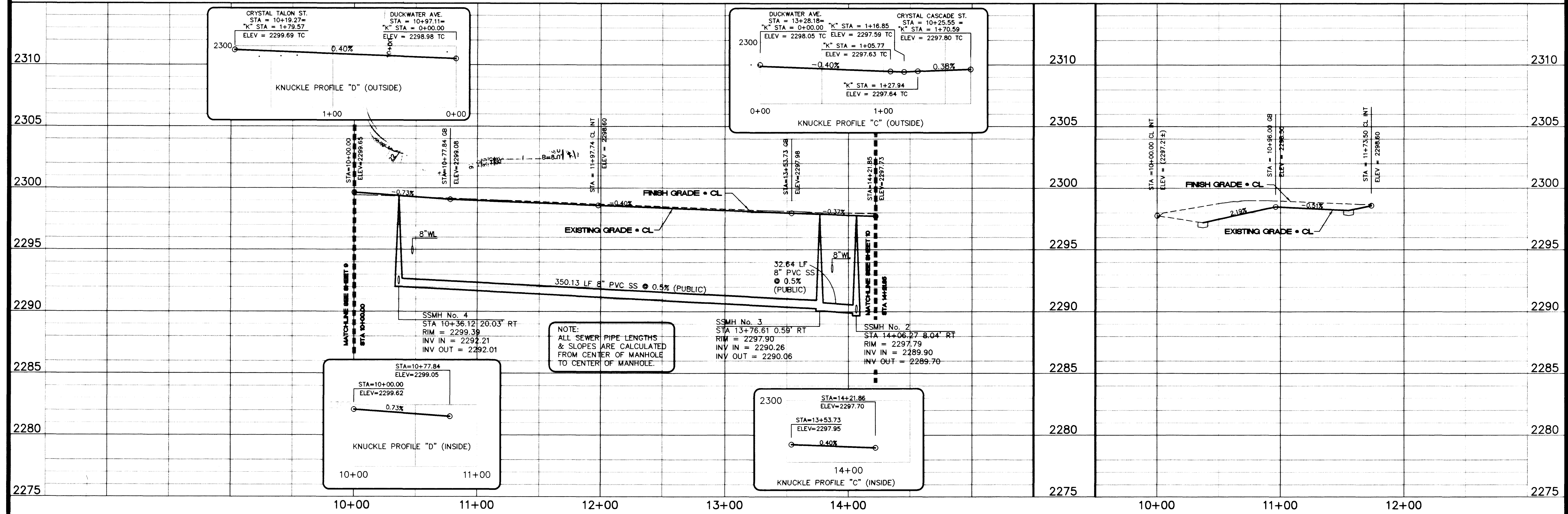


BASIS OF BEARING
NORTH 88°46'05" EAST BEING THE CENTERLINE OF AZURE DRIVE AS SHOWN ON RECORDS OF SURVEY FILE 52 PAGE 70 AND FILE 90 PAGE 44 IN THE OFFICE OF THE COUNTY RECORDER, CLARK COUNTY NEVADA.

BENCHMARK
CITY OF LAS VEGAS BENCHMARK #23 1LV9025N4 BEING AN ALCAP ON REBAR AT THE CENTERLINE INTERSECTION OF CENTENNIAL PKWY. AND BRADLEY ROAD.
NAVD88 ELEVATION: 2302.77' = 701.8865 METERS

DUCKWATER AVE. (PRIVATE STREET W/ PUBLIC SEWER EASEMENT, PUBLIC DRAINAGE EASEMENT TO BE PRIVATELY MAINTAINED)
(MAINTAINED BY H.O.A.)

EMERALD EAGLE ST. (PRIVATE STREET W/ PUBLIC SEWER EASEMENT, PUBLIC DRAINAGE EASEMENT TO BE PRIVATELY MAINTAINED)
(MAINTAINED BY H.O.A.)



Pulte Homes
An American Favorite

Pulte Homes
EAGLE CREEK ESTATES NORTH
UNIT 1

DESIGNED BY: RANDALL J. PARK
CHECKED BY: J. J. [Signature]
PROJECT NO.: 8052PP3
SCALE: 1" = 40'

LOCAL ENGINEER SEAL:
RANDALL J. PARK
CIVIL ENGINEER
No. 9655

SHEET C11
11 OF 17 SHEETS
DRAWING NO. 1074-4571-1

REVISION:
DATE: 1/8/99 BY: R.J.
REVISION: 5/10/99 BY: BT
PROJECT: C:\NAVALE SW\FIBER\8052PP3.DWG TO PARK SIDE

L:\98V052\DESIGN\PH\8052pp3.dwg Tue Oct 06 07:51:41 1998 DL

L:\98V052\DESIGN\8052PP3.DWG

