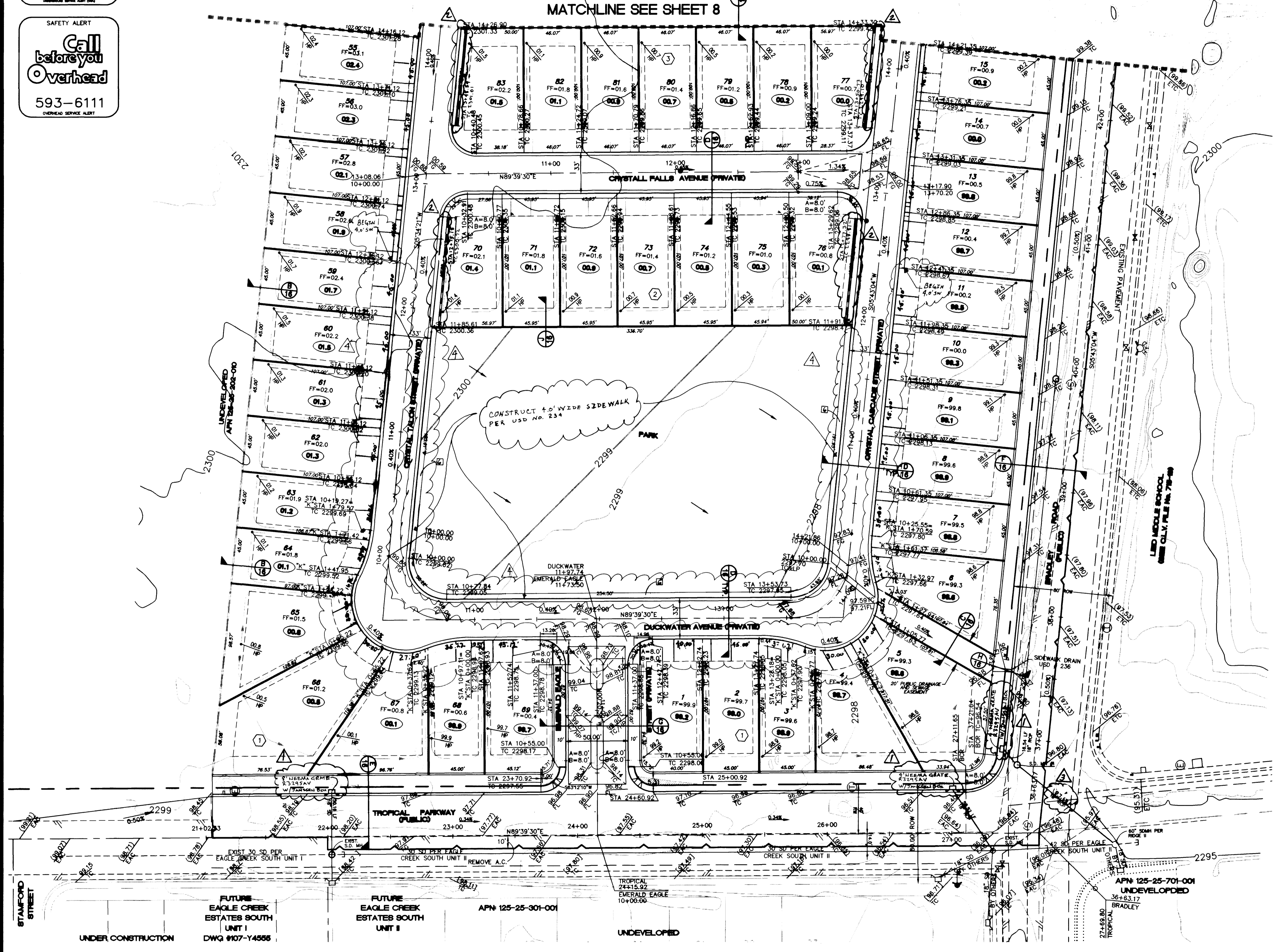
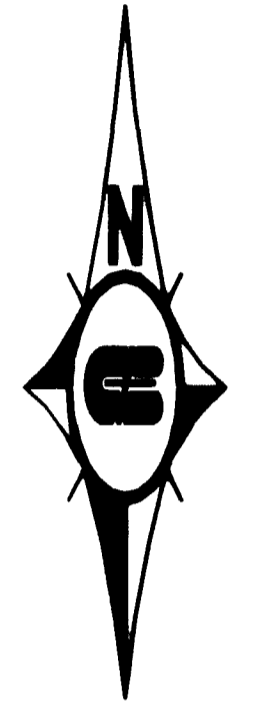
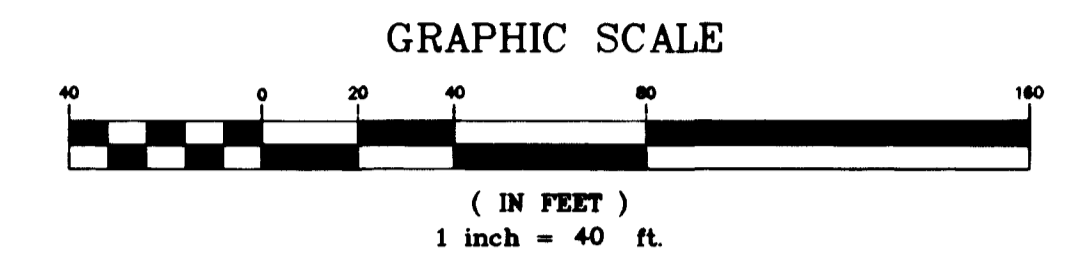


Call before you Dig.  
1-800-227-2600

SAFETY ALERT  
Call before you Overhead.  
593-6111

**BASIS OF BEARING**  
NORTH 88°46'05" EAST BEING THE CENTERLINE OF AZURE DRIVE AS SHOWN ON RECORDS OF SURVEY FILE 52 PAGE 70 AND FILE 90 PAGE 44 IN THE OFFICE OF THE COUNTY RECORDER, CLARK COUNTY NEVADA.

**BENCHMARK**  
CITY OF LAS VEGAS BENCHMARK #23 1LV9025N4 BEING AN ALCAP ON REBAR AT THE CENTERLINE INTERSECTION OF CENTENNIAL PKWY. AND BRADLEY ROAD.  
NAVD88 ELEVATION: 2302.77' = 701.8865 METERS



**NOTE:**  
I CERTIFY THAT THIS GRADING PLAN IS IN CONFORMANCE WITH THE APPROVED DRAINAGE STUDY ON FILE AT THE CITY OF LAS VEGAS FOR THIS PROJECT.

*Paul J. Taylor*  
DATE: 10/17/08

<p>CHANGED SIDEWALK FROM 18" SD PIPE TO 24" SD PIPE REVISED LENGTH OF 18" SD PIPE REVISED LOCATION OF CONCRETE WALLS REVISED DRAIN INLET TYPE</p>	<p>DATE: 10/17/08 BY: [Signature]</p>
<p><b>Pulte Homes</b> An American Favorite</p>	<p><b>Carl Carter :: Burgess</b> 2855 East Street Road, Suite 105 Las Vegas, NV 89120 Consultants in Planning, Engineering, Architecture, Construction Management, and Related Services (702) 798-1007 Fax (702) 798-7066</p>
<p><b>GRADING PLAN</b> 1 of 2</p>	<p><b>PULTE HOMES</b> <b>EAGLE CREEK ESTATES NORTH</b> <b>UNIT 1</b></p>
<p>DRAWN BY: DL DESIGNED BY: DL CHECKED BY: INT PROJECT NO: [Blank] SCALE: 1"=40' HORIZ. VERT. N/A</p>	<p>PROFESSIONAL ENGINEER - STATE OF NEVADA <i>Paul J. Taylor</i> CIVIL ENGINEER No. 9655</p>
<p>10936 (S1) 12953 (S2) 13940 (S3)</p>	<p>SHEET 7 of 7 SHEETS DRAWING NO. 1074-4571-1</p>

