

**DEER SPRINGS WAY - QUANTITY**

4" ASPHALTIC CONCRETE PAVING	2723 SY
4" TYPE II GRAVEL BASE	303 CY
6" TYPE I GRAVEL BASE	681 CY
CURB AND GUTTER (TYPE "L")	630 LF
SEWALK 4"	2179 SF
VALLEY GUTTER (8" W)	1720 SF
HANDICAP RAMP	3 EA
DRIVEWAY	600 SF

**BASIS OF BEARING**  
 NORTH 02°31'01" EAST, BEING THE EAST LINE OF THE WEST HALF (WEST 1/2) OF THE NORTHWEST QUARTER (NW 1/4) OF SECTION 22, TOWNSHIP 19 SOUTH, RANGE 60 EAST, PLD14, CLARK COUNTY, NEVADA, AS SHOWN BY A MAP ON FILE IN THE OFFICE OF THE COUNTY RECORDER IN BOOK 74, PAGE 53, OF PLATS.

**BENCH MARK**  
 DESCRIPTION: CLARK COUNTY GS BRASS CAP # 805-19-60  
 STATION: 14MDDISSVS  
 LOCATION: NE CORNER OF ELKHORN ROAD AND BUFFALO DRIVE  
 NEWPORT BEACH, CA 92660  
 ELEVATION: NAVD 88 DATUM  
 ELEVATION = 2412.96'  
 FEETES = 735.4717'  
 CONVERSION:  
 1 METER(39.37/1200) = 1 U.S. SURVEY FOOT

APPROVED FOR CONSTRUCTION ESN 016  
*Bonnie Craft*  
 LAS VEGAS VALLEY WATER DISTRICT  
 DATE 7-24-98

**NOTICE!**  
 EXISTING UTILITIES ARE SHOWN ON PLANS FOR THE CONVIENIENCE OF THE CONTRACTOR ONLY. THE CONTRACTOR IS RESPONSIBLE FOR THE PROTECTION OF ALL UTILITIES. THE ENGINEER BEARS NO RESPONSIBILITY FOR UTILITIES NOT SHOWN OR SHOWN INCORRECTLY.

Call BEFORE YOU Dig  
 1-800-227-2600  
 (NEVADA SERVICE LOCAL)

**BACK OF CURB LINE DATA TABLE**

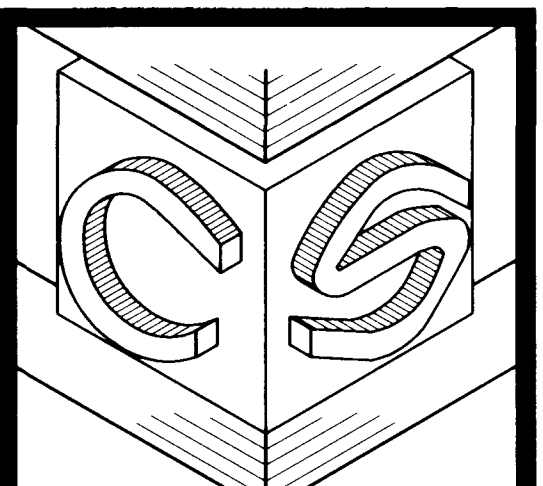
LINE	DIRECTION	DISTANCE
L1	N86°45'21" W	190.15'
L2	N02°42'05" E	1103.47'
L3	N02°42'05" E	1106.40'
L4	N86°45'21" W	548.72'
L5	N84°58'13" W	184.34'
L6	N84°58'13" W	342.36'
L7	N87°28'17" W	5.00'
L8	N87°28'17" W	5.00'

**BACK OF CURB CURVE DATA TABLE**

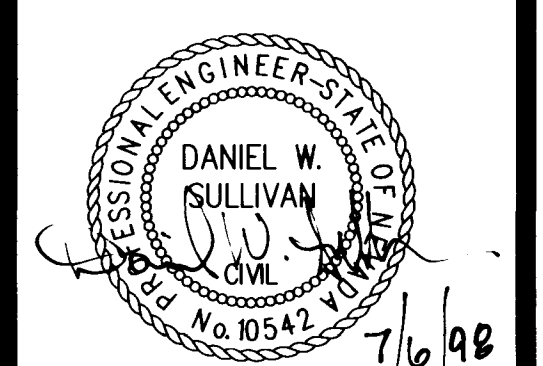
CURVE	RADIUS	LENGTH	TANGENT	DELTA
C1	20.00'	31.23'	19.81'	89°27'26"
C2	20.00'	31.61'	20.19'	92°32'54"
C3	25.00'	39.25'	24.00'	87°40'18"
C4	25.00'	40.24'	26.04'	92°14'42"
C5	20.00'	31.17'	19.75'	89°17'04"
C6	25.00'	40.36'	26.12'	92°30'04"

**FEED RAMP DATA FOR DEER SPRINGS PER USD 235**

CURVE	CAUSE	B
C3	1	8.0'
C4	1	8.0'
C6	1	8.0'



CORNERSTONE ENGINEERING SOLUTIONS BY DESIGN  
 ENGINEERS SEAL

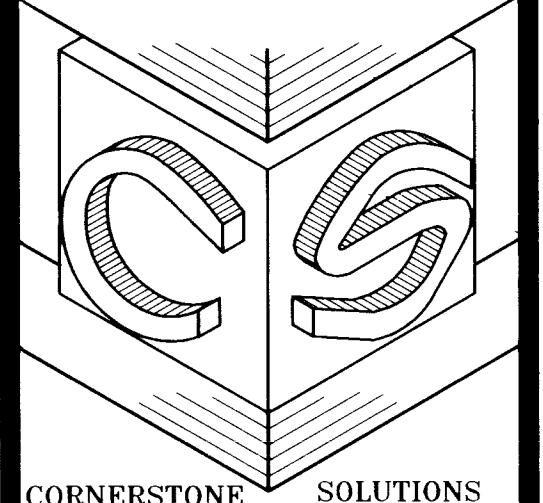


Cornerstone Engineering  
 3690 SOUTH EASTERN AVE. S 102  
 LAS VEGAS, NV 89109  
 (702)731-4711 FAX(702)731-4788

DEER SPRINGS EAST  
 DEER SPRINGS WAY  
 PLAN AND PROFILE  
 CITY OF LAS VEGAS

JOB NUMBER 175-00  
 DATE 7-6-98  
 APPROVAL DATE  
 FILENAME 175-DSW.DWG  
 XREF FILES 175-MST.DWG  
 XREF FILES 175-PRO.DWG

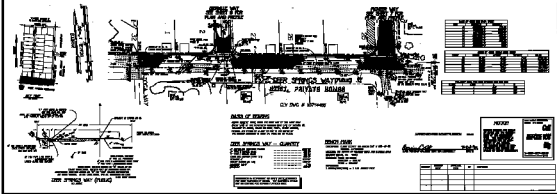
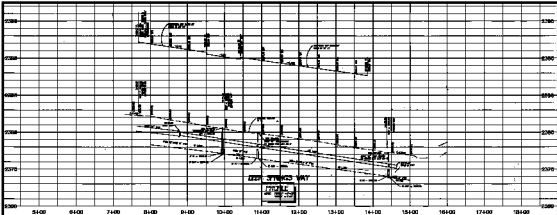
SHEET 9  
 OF 9



CORNERSTONE ENGINEERING SOLUTIONS BY DESIGN



**DEER SPRINGS EAST**  
**DEER SPRINGS WAY**  
**PLAN AND PROFILE**  
**CITY OF LAS VEGAS**



Station	Elevation	Grade	Vertical Curve Data
54+00	6250	0.00%	
64+00	6245	0.00%	
74+00	6240	0.00%	
84+00	6235	0.00%	
94+00	6230	0.00%	
104+00	6225	0.00%	
114+00	6220	0.00%	
124+00	6215	0.00%	
134+00	6210	0.00%	
144+00	6205	0.00%	
154+00	6200	0.00%	
164+00	6195	0.00%	
174+00	6190	0.00%	
184+00	6185	0.00%	

**DATE OF REVIEW**  
 THIS DRAWING WAS REVIEWED BY THE CITY ENGINEER AND FOUND TO BE IN ACCORDANCE WITH THE CITY ENGINEERING DEPARTMENT STANDARDS AND SPECIFICATIONS FOR THE DESIGN AND CONSTRUCTION OF PUBLIC WORKS.

**DEER SPRINGS WAY - CLARITY**

NO. OF STATIONS	130
NO. OF CURVES	1
NO. OF POINTS	131
NO. OF VERTICAL CURVES	1
NO. OF GRADES	1
NO. OF SLOPES	1
NO. OF ELEVATIONS	131
NO. OF STATIONS	130
NO. OF CURVES	1
NO. OF POINTS	131
NO. OF VERTICAL CURVES	1
NO. OF GRADES	1
NO. OF SLOPES	1
NO. OF ELEVATIONS	131

**DATE FILED**  
 THIS DRAWING WAS FILED IN THE CITY ENGINEERING DEPARTMENT RECORDS ON 11/11/11.



DATE	11/11/11
BY	JHS
CHECKED BY	JHS
APPROVED BY	JHS

SHEET 0  
 OF 0

