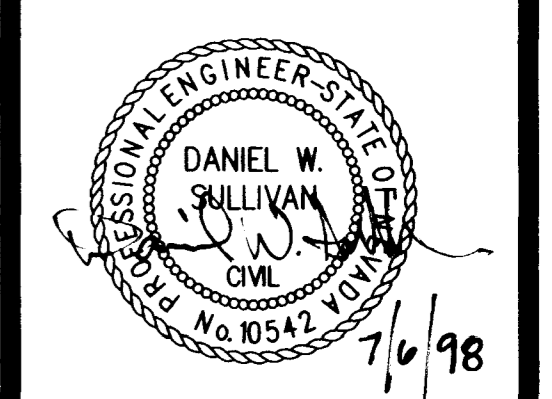


CORNERSTONE ENGINEERING SOLUTIONS BY DESIGN

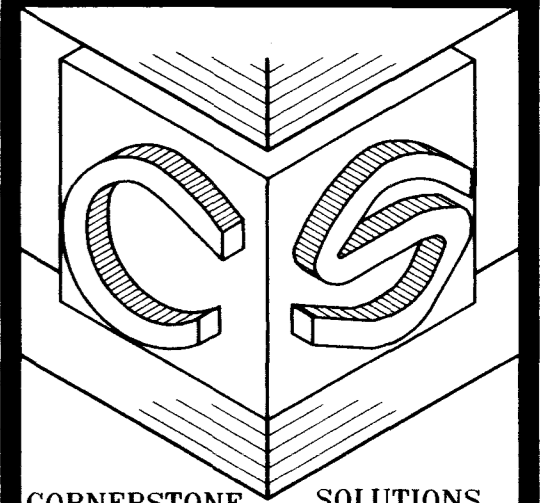


CornerStone Engineering
3690 SOUTH EASTERN AVE. S 102
LAS VEGAS, NV 89109
(702)731-4711 FAX (702)731-4788

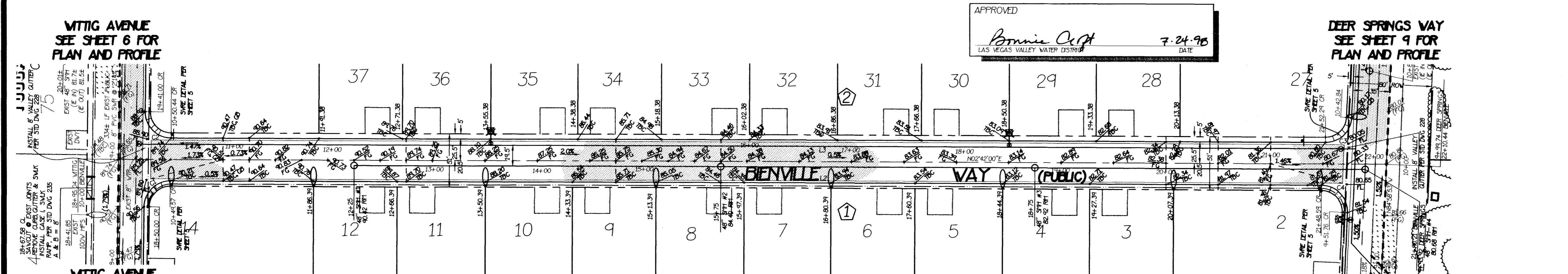
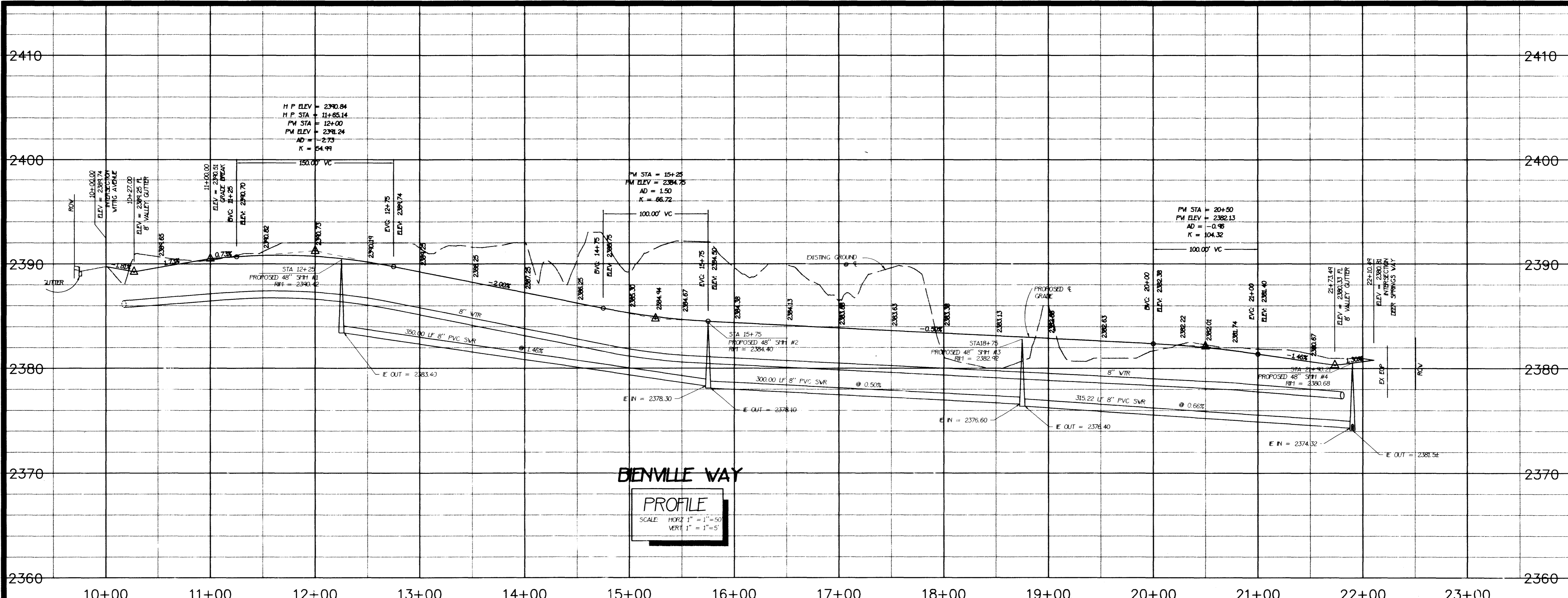
DEER SPRINGS EAST BIENVILLE WAY PLAN AND PROFILE CITY OF LAS VEGAS

JOB NUMBER 175-00
DATE 7-6-98
APPROVAL DATE
FILENAME 175-BIEN.DWG
XREF FILES 175-MST.DWG
XREF FILES 175-PRO.DWG

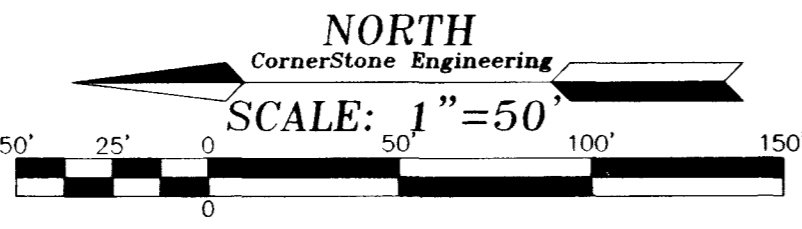
SHEET 8 OF 9



CORNERSTONE ENGINEERING SOLUTIONS BY DESIGN



APPROVED
Bonnie C. Pitt
LAS VEGAS VALLEY WATER DISTRICT
7-24-98
DATE

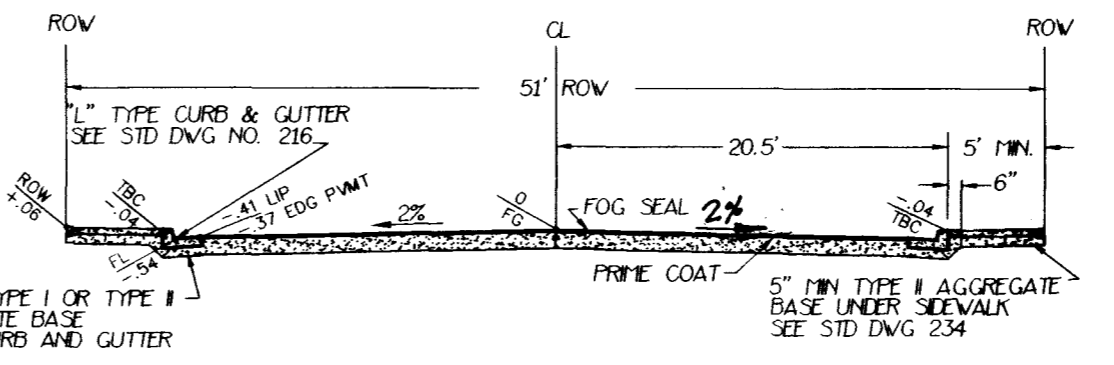


BASIS OF BEARING
NORTH 02°31'01" EAST, BEING THE EAST LINE OF THE WEST HALF (WEST 1/2) OF THE NORTHWEST QUARTER (NW 1/4) OF SECTION 22, TOWNSHIP 19 SOUTH, RANGE 60 EAST, PL.01N., CLARK COUNTY, NEVADA, AS SHOWN BY A MAP ON FILE IN THE OFFICE OF THE COUNTY RECORDER IN BOOK 74, PAGE 53, OF PLATS.

BENCH MARK
DESCRIPTION: CLARK COUNTY GIS BRASS CAP # 805-19-60
STATION: 31V90155V5
LOCATION: NE CORNER OF ELDORNO ROAD AND BUFFALO DRIVE
NEWPORT BEACH, CA 92660
ELEVATION: NAD 83 DATUM
ELEVATION = 2412.96'
NETIES = 735.4717
CONVERSION:
1 METERS*(3937/1200) = 1 U.S. SURVEY FOOT

BIENVILLE WAY - QUANTITY

2" ASPHALTIC CONCRETE PAVING	4680 SY
4" TYPE I GRAVEL BASE	520 CY
6" TYPE I GRAVEL BASE	780 CY
CURB AND GUTTER (TYPE "L")	2277 LF
SEWER 4"	8605 SF
DRIVEWAY	2400 SF



NOTICE!
EXISTING UTILITIES ARE SHOWN ON PLANS FOR THE CONVIENIENCE OF THE CONTRACTOR ONLY. THE CONTRACTOR IS RESPONSIBLE FOR THE PROTECTION OF ALL UTILITIES. THE ENGINEER BEARS NO RESPONSIBILITY FOR UTILITIES NOT SHOWN OR SHOWN INCORRECTLY.

Call BEFORE YOU Dig
1-800-227-2600
UNDERGROUND SERVICE (USA)

BACK OF CURB LINE DATA TABLE

LINE	DIRECTION	DISTANCE
L1	N88°45'21" W	190.15'
L2	N02°42'08" E	1103.97'
L3	N02°42'08" E	1106.40'
L4	N88°45'21" W	348.72'
L5	N84°58'13" V	184.34'
L6	N84°58'13" V	342.36'
L7	N87°28'17" V	5.00'
L8	N87°28'17" V	5.00'

BACK OF CURB CURVE DATA TABLE

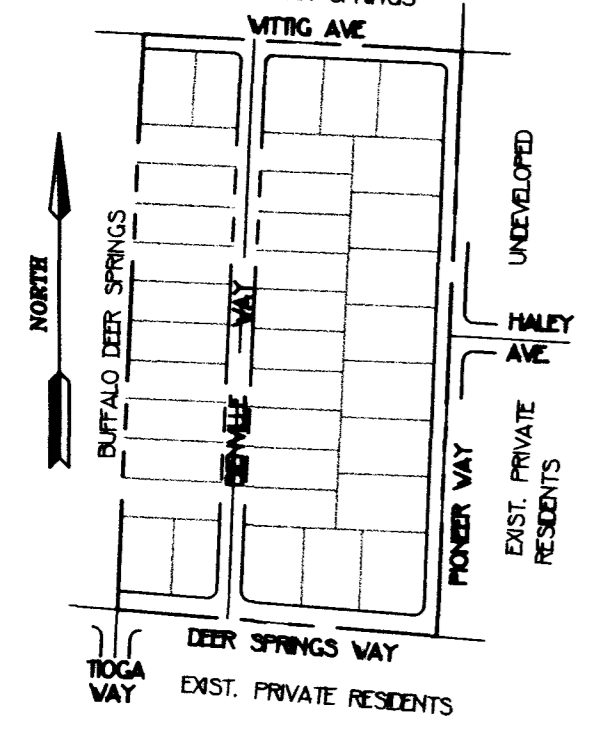
CURVE	RADIUS	LENGTH	TANGENT	DELTA
C1	20.00'	31.23'	19.81'	89°27'26"
C2	20.00'	31.61'	20.19'	90°32'34"
C3	25.00'	38.25'	24.00'	87°40'18"
C4	25.00'	40.24'	26.04'	92°14'42"
C5	20.00'	31.17'	19.75'	89°17'04"
C6	25.00'	40.36'	26.12'	92°30'04"

PED RAMP DATA FOR BIENVILLE PER USD 235

CURVE	CASE	A	B
C1	I	8.0'	8.0'
C2	I	9.5'	4.5'
C3	I	8.0'	8.0'
C4	I	8.0'	8.0'

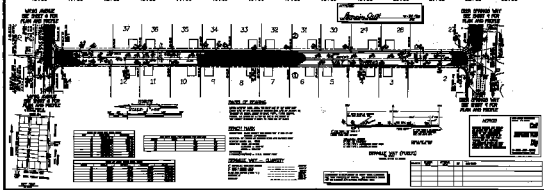
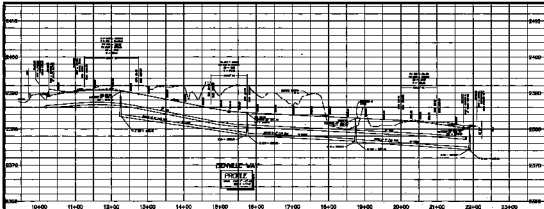
WITTIG AVENUE
SEE SHEET 6 FOR
PLAN AND PROFILE

WITTIG AVENUE
SEE SHEET 6 FOR
PLAN AND PROFILE



CONTRACTOR IS RESPONSIBLE TO VERIFY THESE QUANTITIES FOR THEIR PURPOSES OF BIDDING. THE QUANTITIES SHOWN ARE AN ESTIMATE FOR BIDDING PURPOSES ONLY.

REVISION	REVISION DATE	APPROVAL DATE	BY	COMMENTS



DEER SPRINGS EAST
 BIENVILLE WAY
 PLAN AND PROFILE
 CITY OF LAS VEGAS

DATE	1-2-66
BY	...
CHECKED	...
APPROVED	...

SCALE 1" = 40'

