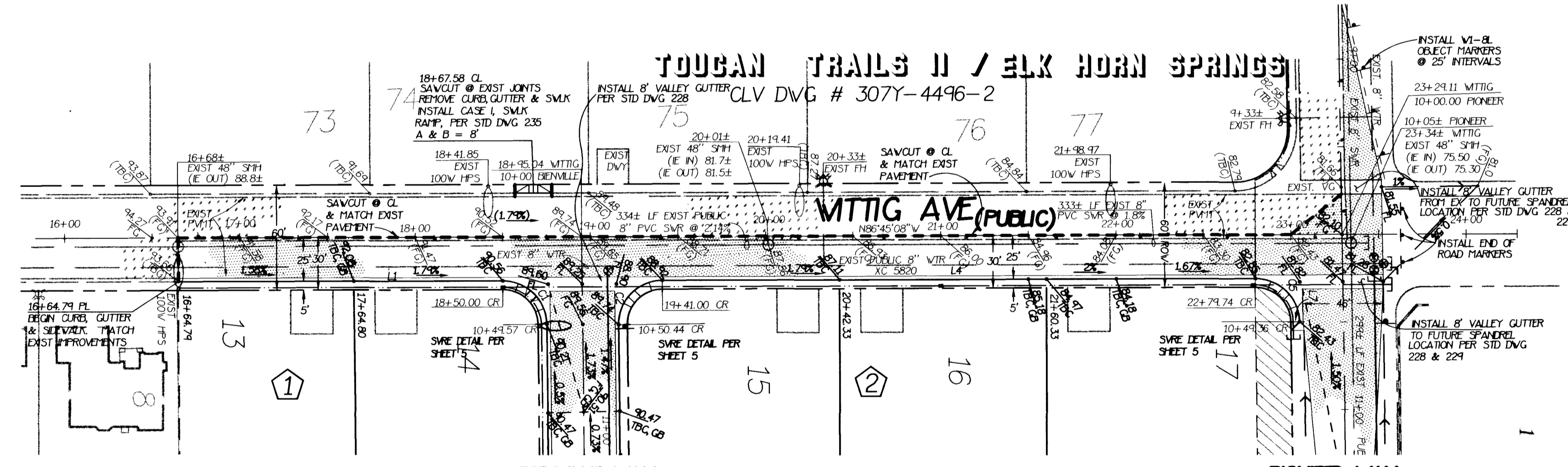
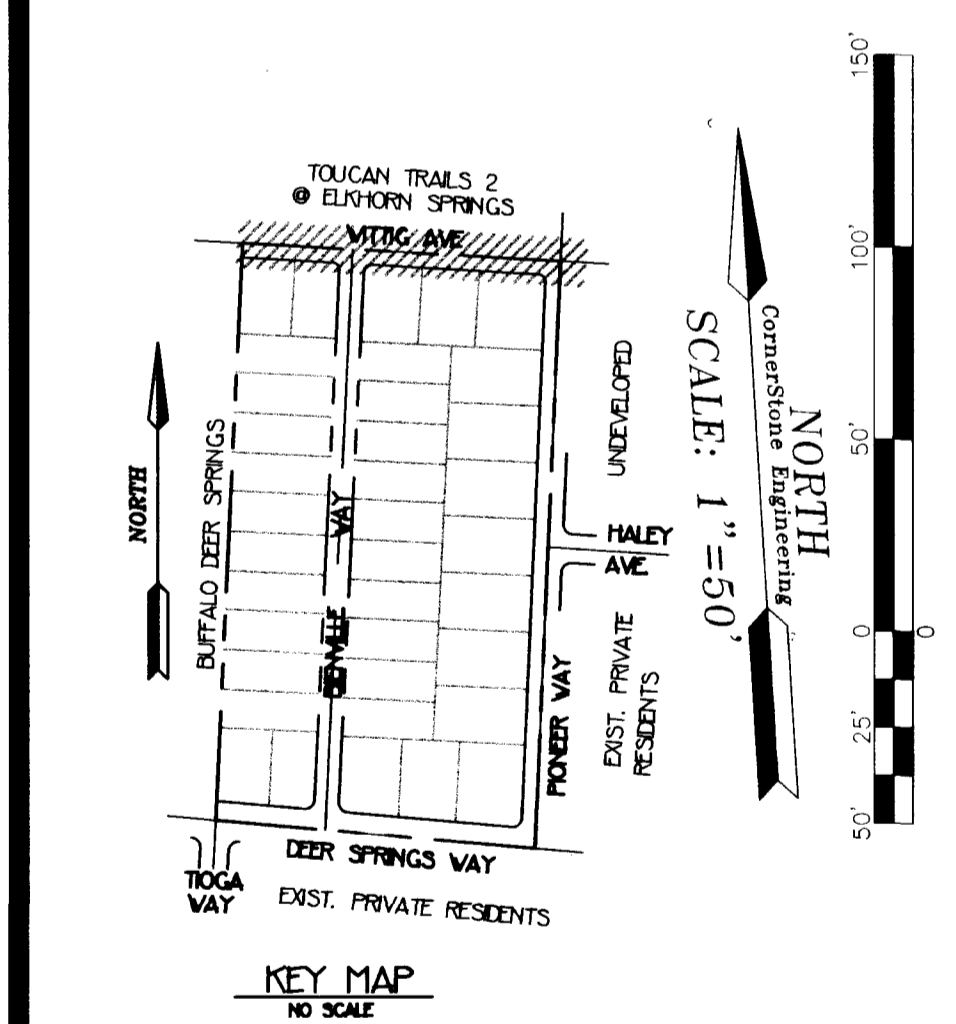


PROFILE
SCALE: HORIZ 1" = 1" = 50'
VERT 1" = 1" = 5'



BACK OF CURB LINE DATA TABLE

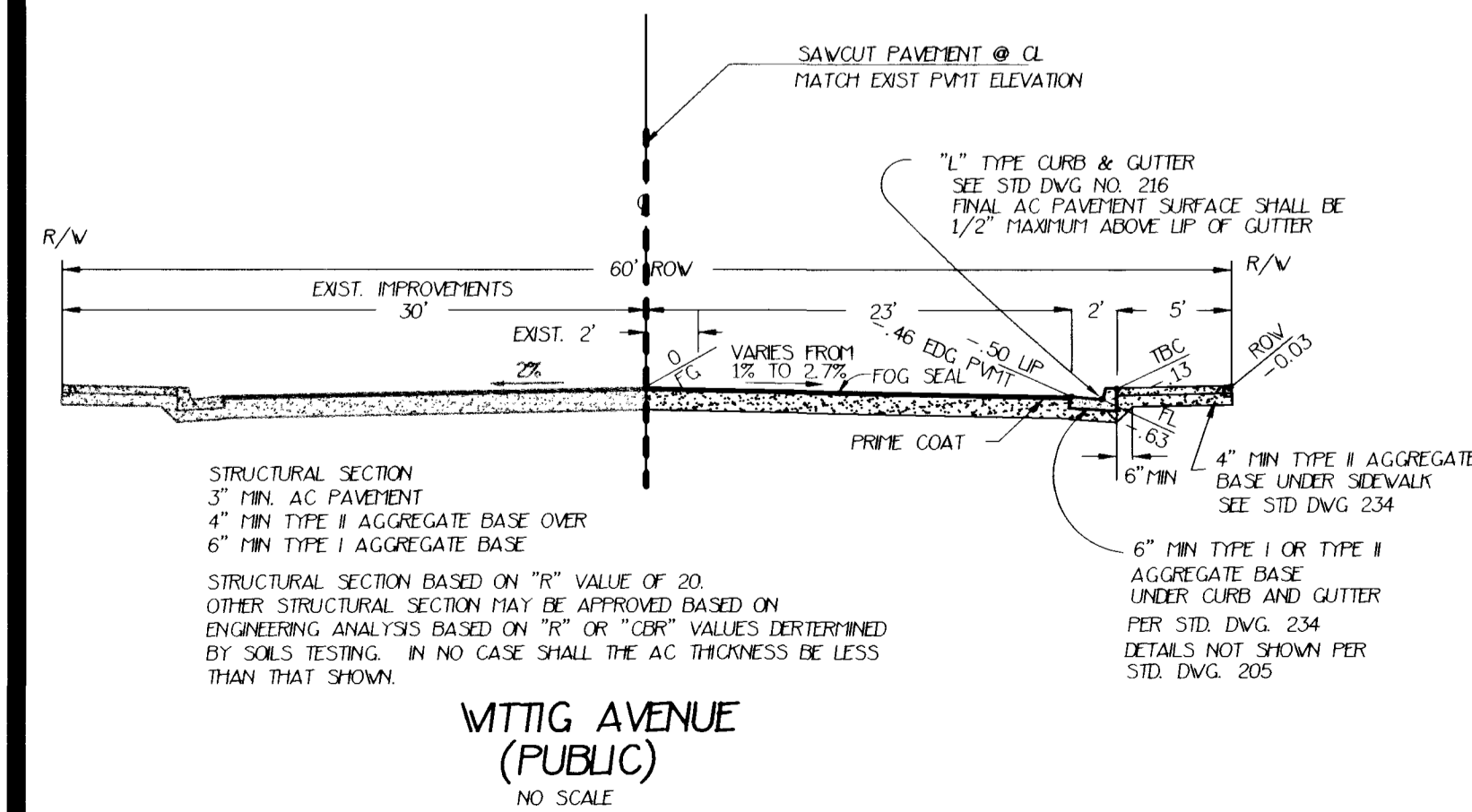
LINE	DIRECTION	DISTANCE
L1	N88°45'21"V	190.15'
L2	N02°42'08"E	1103.97'
L3	N02°42'08"E	1106.90'
L4	N88°45'21"V	348.72'
L5	N84°58'13"V	184.34'
L6	N84°58'13"V	342.38'
L7	N87°28'17"V	6.00'
L8	N87°28'17"V	5.00'

BACK OF CURB CURVE DATA TABLE

CURVE	RADIUS	LENGTH	TANGENT	DELTA
C1	20.00'	31.23'	14.81'	89°27'26"
C2	20.00'	31.61'	20.19'	90°32'54"
C3	25.00'	38.25'	24.00'	87°40'18"
C4	25.00'	40.24'	26.04'	92°14'42"
C5	20.00'	31.17'	14.75'	89°17'04"
C6	25.00'	40.36'	26.12'	92°30'04"

PED RAMP DATA FOR WITTIG PER USD 235

CURVE	CASE	A	B
C1	I	8.0'	8.0'
C2	I	9.5'	4.5'
C5	I	8.0'	8.0'



WITTIG AVENUE - QUANTITY

3" ASPHALTIC CONCRETE PAVING	1635 SY
4" TYPE I GRAVEL BASE	182 CY
6" TYPE I GRAVEL BASE	273 CY
CURB AND GUTTER (TYPE "L")	647 LF
SEWERAL 4"	2184 SF
VALLEY GUTTER (8" W)	1538 LF
HANDICAP RAMP	4 EA
DREVENAY	600 SF

CONTRACTOR IS RESPONSIBLE TO VERIFY THESE QUANTITIES FOR THEIR PURPOSES OF BIDDING. THE QUANTITIES SHOWN ARE AN ESTIMATE FOR BIDDING PURPOSES ONLY.

BASIS OF BEARING
NORTH 02°31'01" EAST, BEING THE EAST LINE OF THE WEST HALF (WEST 1/2) OF THE NORTHWEST QUARTER (NW 1/4) OF SECTION 22, TOWNSHIP 19 SOUTH, RANGE 60 EAST, PLDIT, CLARK COUNTY, NEVADA, AS SHOWN BY A TRAP ON FILE IN THE OFFICE OF THE COUNTY RECORDER IN BOOK 74, PAGE 53, OF PLATS.

BENCH MARK
DESCRIPTION: CLARK COUNTY GIS BRASS CAP # 805-19-60
STATION: 11K910555
LOCATION: NE CORNER OF ENLORN ROAD AND BUFFALO DRIVE
NEWPORT BEACH, CA 92660
ELEVATION: NAVD 88 DATUM
ELEVATION = 2412.95'
NETES = 735.4717
CONVERSION: 1 PETER(3937/1200) = 1 U.S. SURVEY FOOT

REVISION	REVISION DATE	APPROVAL DATE	BY	COMMENTS

NOTICE!
EXISTING UTILITIES ARE SHOWN ON PLANS FOR THE CONVIENIENCE ONLY. THE CONTRACTOR IS RESPONSIBLE FOR THE PROTECTION OF ALL UTILITIES. THE ENGINEER BEARS NO RESPONSIBILITY FOR UTILITIES NOT SHOWN OR SHOWN INCORRECTLY.

Call BEFORE YOU Dig
1-800-227-2600
UNDERGROUND SERVICE (USA)

CORNERSTONE ENGINEERING SOLUTIONS BY DESIGN
ENGINEERS SEAL

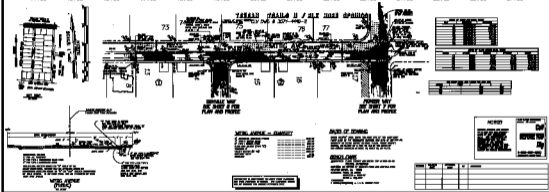
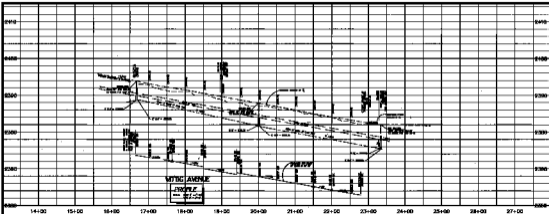
DANIEL W. SULLIVAN
PROFESSIONAL ENGINEER - STATE OF NEVADA
No. 10542

CornerStone Engineering
3690 SOUTH EASTERN AVE. S 102
LAS VEGAS, NV 89109
(702)781-4711 FAX(702)781-4788

DEER SPRINGS EAST
WITTIG AVENUE
PLAN AND PROFILE
CITY OF LAS VEGAS

SHEET 6 OF 9

CORNERSTONE ENGINEERING SOLUTIONS BY DESIGN



DEER SPRINGS EAST
WITTIG AVENUE
PLAN AND PROFILE
CITY OF LAS VEGAS

DATE	10/1/68
BY	...
CHECKED BY	...
APPROVED BY	...
TITLE	...

