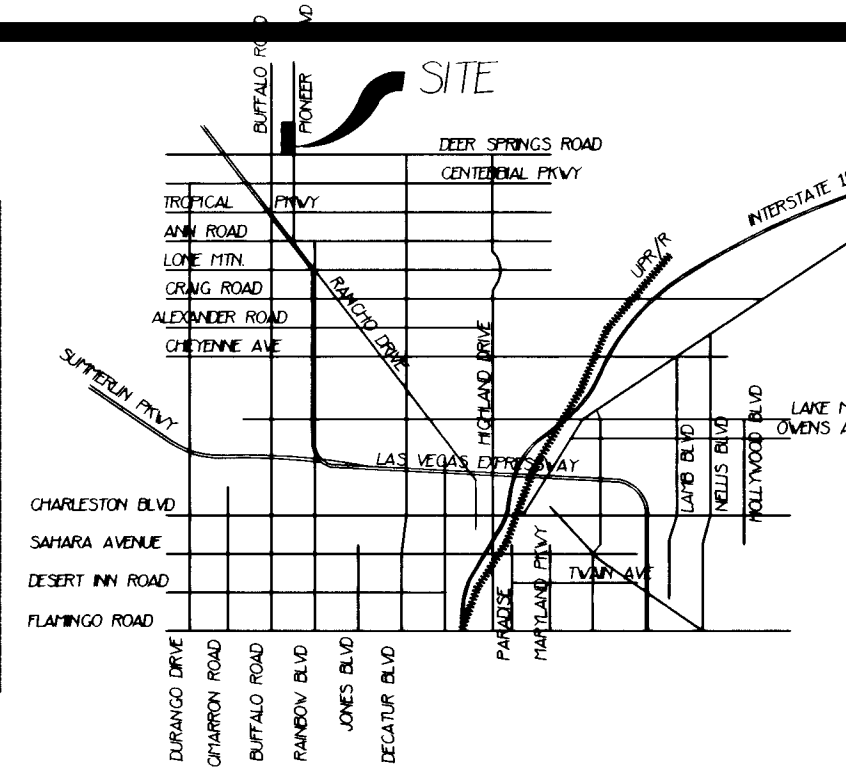


**ABBREVIATIONS**

- FG FINISH GRADE
- TBC TOP BACK OF CURB
- GB GRADE BREAK
- LP/HP LOW/HIGH POINT
- TW TOP OF WALL
- TF TOP OF FOOTING
- BBF BOTTOM BLDG FOOTING
- BWF BOTTOM FLOOR WALL FOOTING
- FCB FOUNDATION
- FCW FOUNDATION WALL
- FF FINISH FLOOR
- FL FLOW LINE
- NG NATURAL GROUND
- (TF) EXIST TOP OF FOOTING
- (TW) EXIST TOP OF WALL
- SMR SEWER
- WTR WATER
- STRM STORM DRAIN
- C.O. CLEANOUT



**GRADING QUANTITIES**

CUT: 35,645    FILL: 38,327  
 IMPORT: 2682  
 THIS QUANTITY IS ADJUSTED FOR 3" ASPHALT AND BASE SECTION, AND A .92" SECTION FOR THE BUILDING

CONTRACTOR IS RESPONSIBLE TO VERIFY THESE QUANTITIES FOR THEIR PURPOSES OF BIDDING. THE QUANTITIES SHOWN ARE AN ESTIMATE FOR BONDING PURPOSES ONLY.

I CERTIFY THAT THIS GRADING PLAN CONFORMS TO THE APPROVED HYDROLOGY STUDY FOR THIS SITE ON FILE AT THE CITY OF LAS VEGAS  
 Daniel W. Sullivan 7/20/98  
 CIVIL ENGINEER

**BENCH MARK**

DESCRIPTION: CLARK COUNTY G5 BRASS CAP # 805-19-60  
 STATION: 1LV40155V5  
 LOCATION: NE CORNER OF ELKHORN ROAD AND BUFFALO DRIVE  
 ELEVATION: NAVD 88 DATUM  
 ELEV. = 2412.96  
 METERS = 735.4717  
 CONVERSION: 1 METER \* (3937/1200) = 1 U.S. SURVEY FOOT

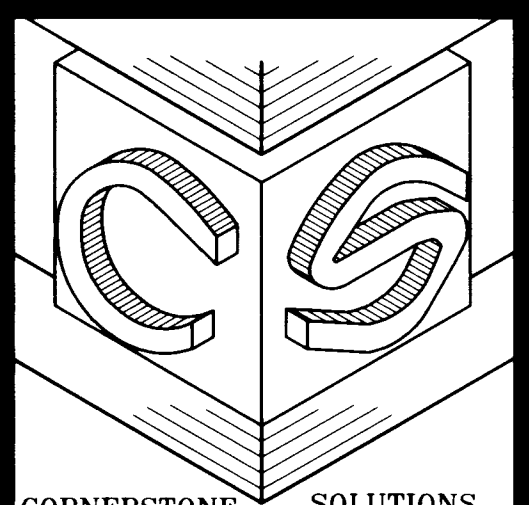
CURVE	RADIUS	LENGTH	TANGENT	DELTA
BC1	20.00'	32.23'	20.83'	92°19'07"
BC2	20.00'	19.21'	19.21'	87°40'53"
BC3	20.00'	32.24'	20.84'	92°30'06"
BC4	20.00'	31.16'	19.75'	89°16'04"
BC5	20.00'	31.61'	20.14'	90°32'52"
BC6	20.00'	31.22'	19.81'	89°27'08"

**LEGEND**

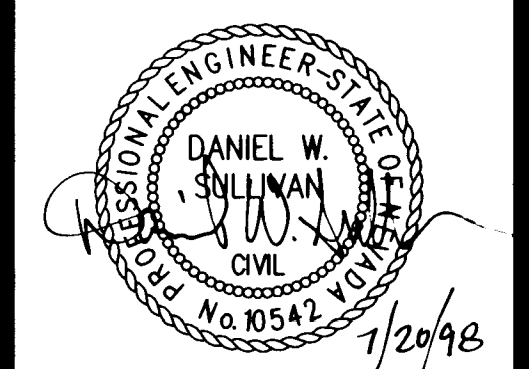
- FINISH GROUND ELEV
- EXIST FINISH GROUND
- FLOW LINE ELEV
- EXIST FLOW LINE
- TOP BACK OF CURB
- EXIST TOP BACK OF CURB
- FINISH GROUND CONTOUR 1' INTERVAL
- EXIST GROUND CONTOUR 1' INTERVAL
- EXIST GROUND CONTOUR 5' INTERVAL
- EXIST GROUND CONTOUR 1' INTERVAL
- EXIST GROUND CONTOUR 5' INTERVAL
- RATE OF SLOPE
- DIRECTION OF DRAINAGE
- 1" TYPE CURB & GUTTER
- 6" CURB
- EXIST CURB
- BLOCKWALL

**NOTICE!**  
 EXISTING UTILITIES ARE SHOWN ON PLANS FOR THE CONVENIENCE OF THE CONTRACTOR ONLY. THE CONTRACTOR IS RESPONSIBLE FOR THE PROTECTION OF ALL UTILITIES. THE ENGINEER BEARS NO RESPONSIBILITY FOR UTILITIES NOT SHOWN OR SHOWN INCORRECTLY.  
 1-800-227-2600  
 UNDERGROUND SERVICE (USA)

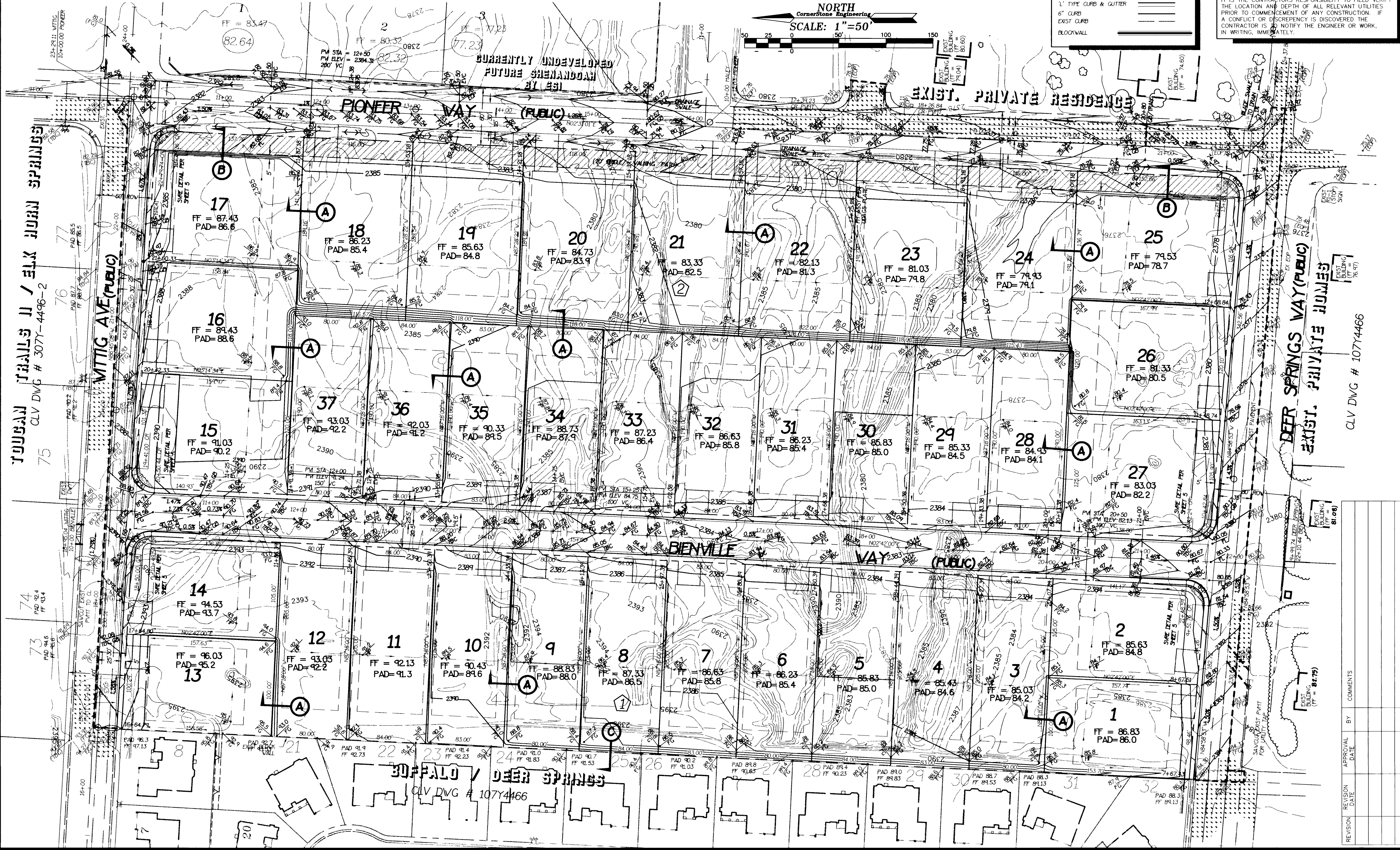
**NOTE:**  
 CornerStone Engineering INCORPORATED ASSUMES NO RESPONSIBILITY FOR EXISTING UTILITY LOCATIONS, SHOWN OR NOT SHOWN. THE UTILITIES SHOWN ON THIS DRAWING HAVE BEEN PLOTTED FROM RECORD INFORMATION AND ARE FOR THE CONVENIENCE OF THE CONTRACTOR ONLY. IT IS THE CONTRACTOR'S RESPONSIBILITY TO FIELD VERIFY THE LOCATION AND DEPTH OF ALL RELEVANT UTILITIES PRIOR TO COMMENCEMENT OF ANY CONSTRUCTION. IF A CONFLICT OR DISCREPANCY IS DISCOVERED THE CONTRACTOR IS NOTIFIED THE ENGINEER OR WORK, IN WRITING, IMMEDIATELY.



CORNERSTONE ENGINEERING SOLUTIONS BY DESIGN



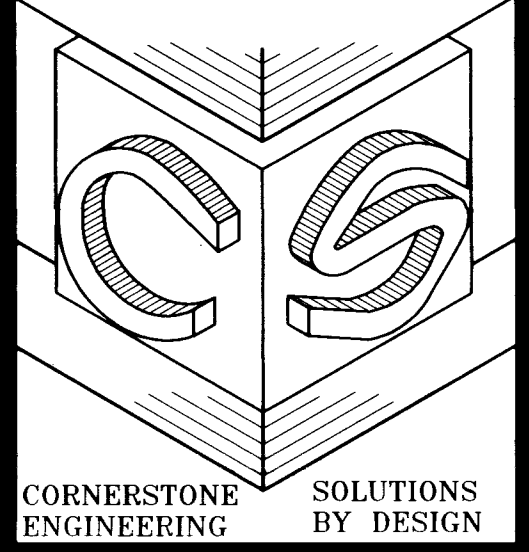
CornerStone Engineering  
 3690 SOUTH EASTERN AVE. S 102  
 LAS VEGAS, NV 89109  
 (703)731-4711 FAX (702)731-4788



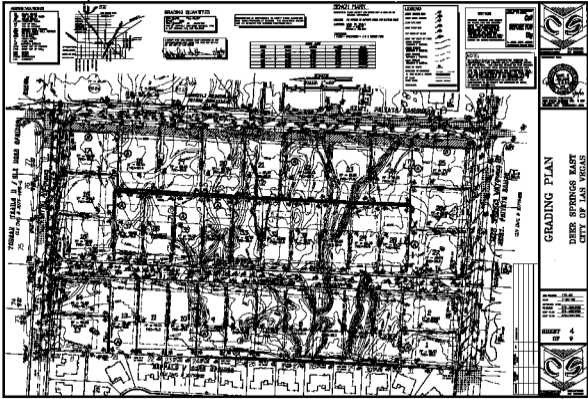
**GRADING PLAN**  
**DEER SPRINGS EAST**  
**CITY OF LAS VEGAS**

JOB NUMBER: 175-00  
 DATE: 7-20-98  
 APPROVAL DATE:  
 FILENAME: 175-GRD.DWG  
 XREF FILES: 175-MST.DWG  
 XREF FILES: 175-TOP.DWG

**SHEET 4**  
**OF 9**



CORNERSTONE ENGINEERING SOLUTIONS BY DESIGN



**GENERAL NOTES**

1. ALL CONSTRUCTION SHALL BE IN ACCORDANCE WITH THE LATEST EDITIONS OF THE U.S. GOVERNMENT ENGINEERING BUREAU MANUALS AND THE CALIFORNIA ENGINEERING REGULATIONS.
2. THE GRADING SHALL BE TO THE FINISHED GRADES SHOWN ON THIS PLAN.
3. THE EXISTING GRADES ARE SHOWN BY DOTTED LINES AND THE FINISHED GRADES ARE SHOWN BY SOLID LINES.
4. THE GRADING SHALL BE TO THE FINISHED GRADES SHOWN ON THIS PLAN.
5. THE EXISTING GRADES ARE SHOWN BY DOTTED LINES AND THE FINISHED GRADES ARE SHOWN BY SOLID LINES.



**GRADING QUANTITIES**

Excavation	1,234
Fill	567
Gravel	890
Asphalt	123
Concrete	456

**GENERAL NOTES**

1. ALL CONSTRUCTION SHALL BE IN ACCORDANCE WITH THE LATEST EDITIONS OF THE U.S. GOVERNMENT ENGINEERING BUREAU MANUALS AND THE CALIFORNIA ENGINEERING REGULATIONS.
2. THE GRADING SHALL BE TO THE FINISHED GRADES SHOWN ON THIS PLAN.
3. THE EXISTING GRADES ARE SHOWN BY DOTTED LINES AND THE FINISHED GRADES ARE SHOWN BY SOLID LINES.
4. THE GRADING SHALL BE TO THE FINISHED GRADES SHOWN ON THIS PLAN.
5. THE EXISTING GRADES ARE SHOWN BY DOTTED LINES AND THE FINISHED GRADES ARE SHOWN BY SOLID LINES.

**GENERAL NOTES**

1. ALL CONSTRUCTION SHALL BE IN ACCORDANCE WITH THE LATEST EDITIONS OF THE U.S. GOVERNMENT ENGINEERING BUREAU MANUALS AND THE CALIFORNIA ENGINEERING REGULATIONS.
2. THE GRADING SHALL BE TO THE FINISHED GRADES SHOWN ON THIS PLAN.
3. THE EXISTING GRADES ARE SHOWN BY DOTTED LINES AND THE FINISHED GRADES ARE SHOWN BY SOLID LINES.
4. THE GRADING SHALL BE TO THE FINISHED GRADES SHOWN ON THIS PLAN.
5. THE EXISTING GRADES ARE SHOWN BY DOTTED LINES AND THE FINISHED GRADES ARE SHOWN BY SOLID LINES.

**LEGEND**

- EXISTING GRADE
- FINISHED GRADE
- EXISTING ELEVATION
- FINISHED ELEVATION
- EXISTING SLOPE
- FINISHED SLOPE
- EXISTING CURVE
- FINISHED CURVE

**NOTES**

1. ALL CONSTRUCTION SHALL BE IN ACCORDANCE WITH THE LATEST EDITIONS OF THE U.S. GOVERNMENT ENGINEERING BUREAU MANUALS AND THE CALIFORNIA ENGINEERING REGULATIONS.
2. THE GRADING SHALL BE TO THE FINISHED GRADES SHOWN ON THIS PLAN.
3. THE EXISTING GRADES ARE SHOWN BY DOTTED LINES AND THE FINISHED GRADES ARE SHOWN BY SOLID LINES.
4. THE GRADING SHALL BE TO THE FINISHED GRADES SHOWN ON THIS PLAN.
5. THE EXISTING GRADES ARE SHOWN BY DOTTED LINES AND THE FINISHED GRADES ARE SHOWN BY SOLID LINES.



**GRADING PLAN**

DEER SPRINGS EAST  
CITY OF LAS VEGAS

BY: [Signature]

DATE: 4/1/54

