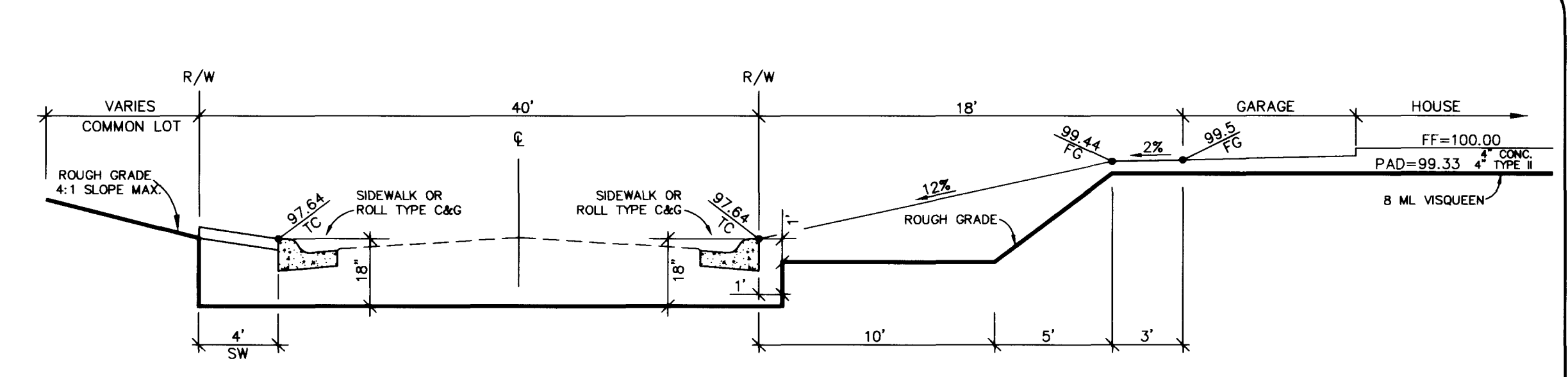
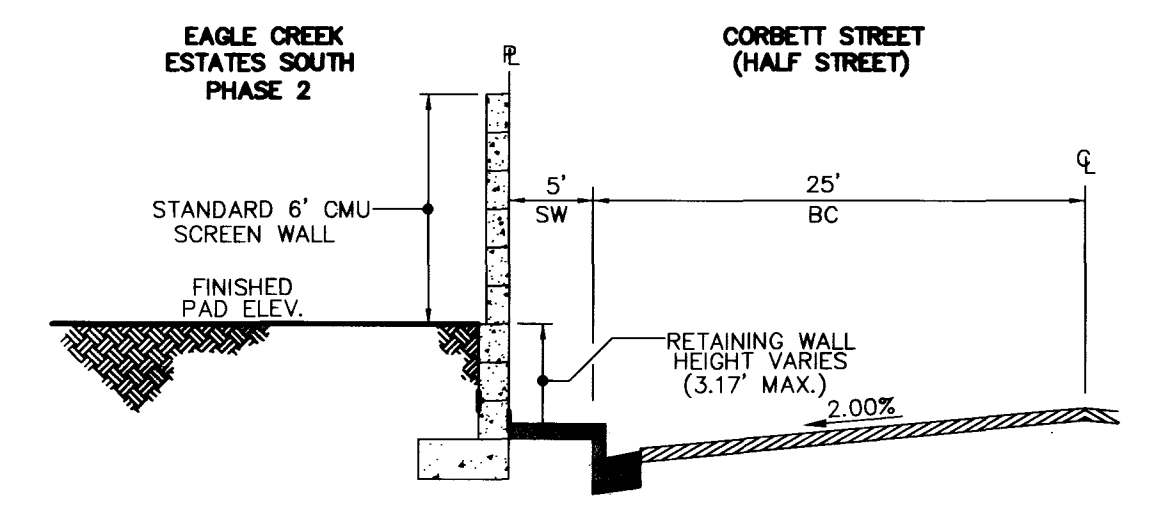


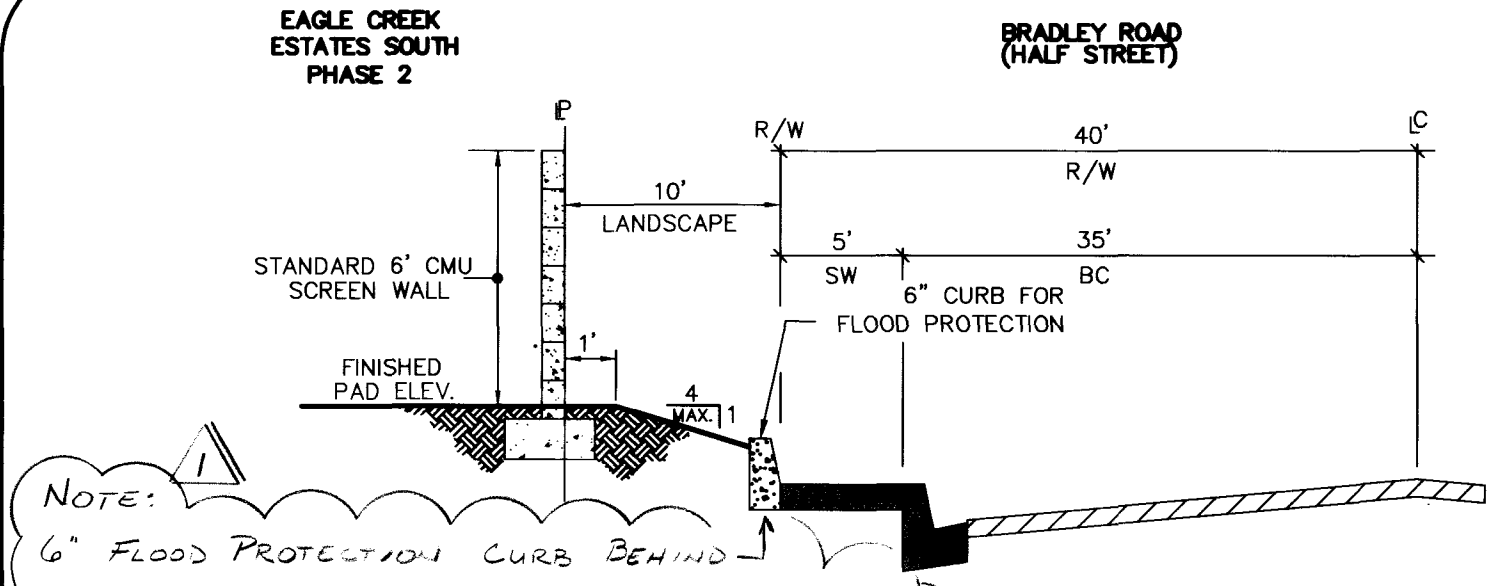
1  
12  
**TYPICAL ROUGH GRADE PAD & STREET  
CROSS SECTION DETAIL (TYPICAL)**  
N.T.S.



7  
12  
**TYPICAL ROUGH GRADE PAD, STREET & COMMON  
LOT CROSS SECTION DETAIL (TYPICAL)**  
N.T.S.

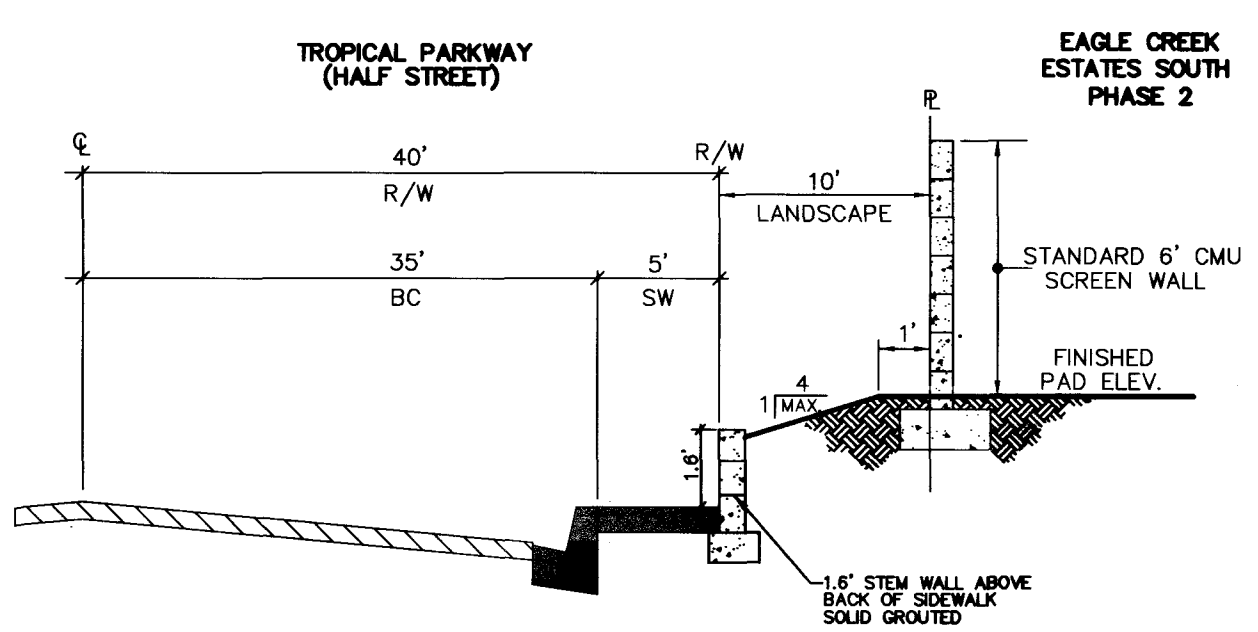


2  
12  
**CORBETT STREET  
REAR YARD W/ PERIMETER WALL  
CROSS SECTION DETAIL**  
N.T.S.

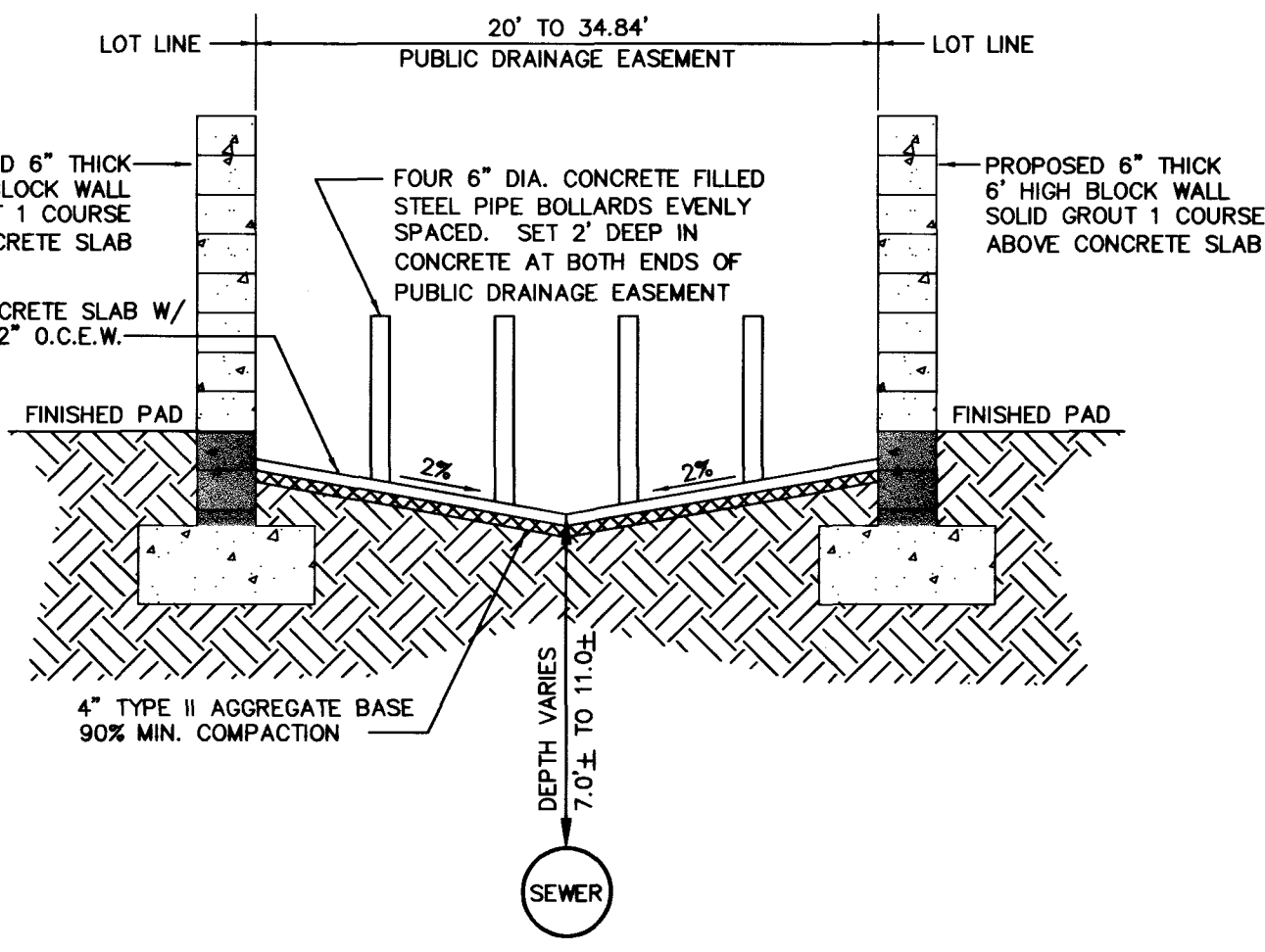


5  
12  
**BRADLEY ROAD  
REAR YARD W/ PERIMETER WALL  
CROSS SECTION DETAIL**  
N.T.S.

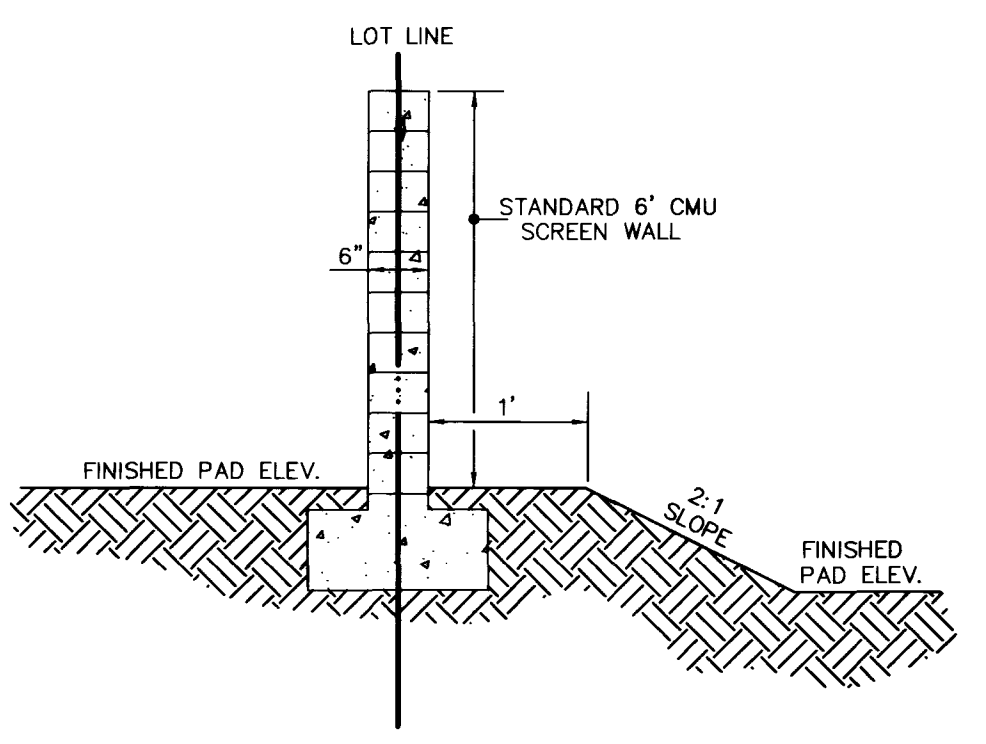
NOTE:  
6" FLOOD PROTECTION CURB BEHIND  
SIDEWALK WILL NOT BE REQUIRED SOUTH  
OF STATION 33+437 (SOUTH LL OF LOT 28)



3  
12  
**TROPICAL PARKWAY  
REAR YARD W/ PERIMETER WALL  
CROSS SECTION DETAIL**  
N.T.S.



6  
12  
**PUBLIC DRAINAGE AND SEWER  
EASEMENT (TO BE PRIVATELY MAINTAINED)**  
N.T.S.



4  
12  
**REAR & SIDE YARD WALL  
CROSS SECTION DETAIL**  
N.T.S.

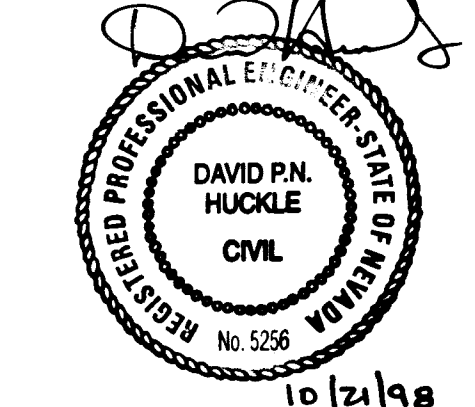
Avoid cutting underground utility lines. It's costly.

**Call before you Dig.**

1-800-227-2600

UNDERGROUND SERVICE (USA)

10/21/19



**BASIS OF BEARING**  
NORTH 88°46'05" EAST BEING THE CENTERLINE OF AZURE DRIVE AS SHOWN BY A MAP ON FILE IN THE OFFICE OF THE COUNTY THE COUNTY RECORDER, CLARK COUNTY, NEVADA IN FILE 52 OF RECORDS OF SURVEYS, PAGE 70.

**BENCHMARK**  
CITY OF LAS VEGAS VERTICAL CONTROL #38-1LV90-36N4 RIVET AND PLATE IN SOUTH TOP OF CURB, ANN ROAD AT CURB ANGLE POINT, 1530' EAST OF CALVERTS STREET. NAVD88 DATUM ELEVATION: 696.2262 METERS (2284.20 FEET)

DESCRIPTION: Rev. Final Professional Civil Engineer - Bradley Road  
 8080 WEST SAHARA AVENUE - SUITE D  
 LAS VEGAS, NEVADA 89117  
 PHONE: (702) 256-7850  
 FAX: (702) 256-1710  
**PMI**  
 ENGINEERING & SURVEYING, INC.  
**PULTE HOMES**  
**EAGLE CREEK ESTATES SOUTH UNIT 2**  
**DETAIL PLAN 1**  
 SHEET  
**12**  
 OF 12 SHEETS

C:\DRAWINGS\EAGLE\ESOUTH\1\MPROV2\122-snt-12a.dwg Tue Oct 13 09:13:40 1998 DRK

05201

11110 17143

1074-4555-2

