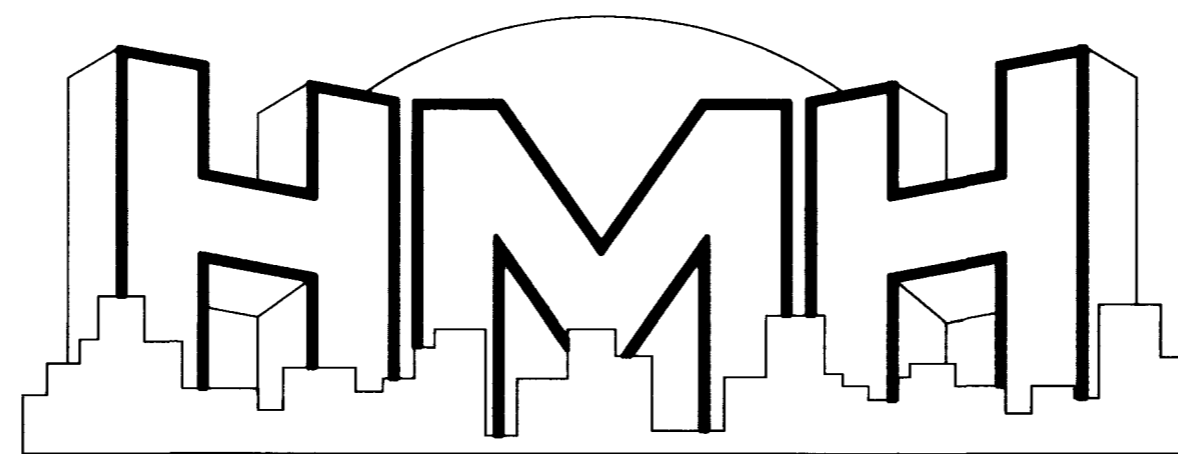
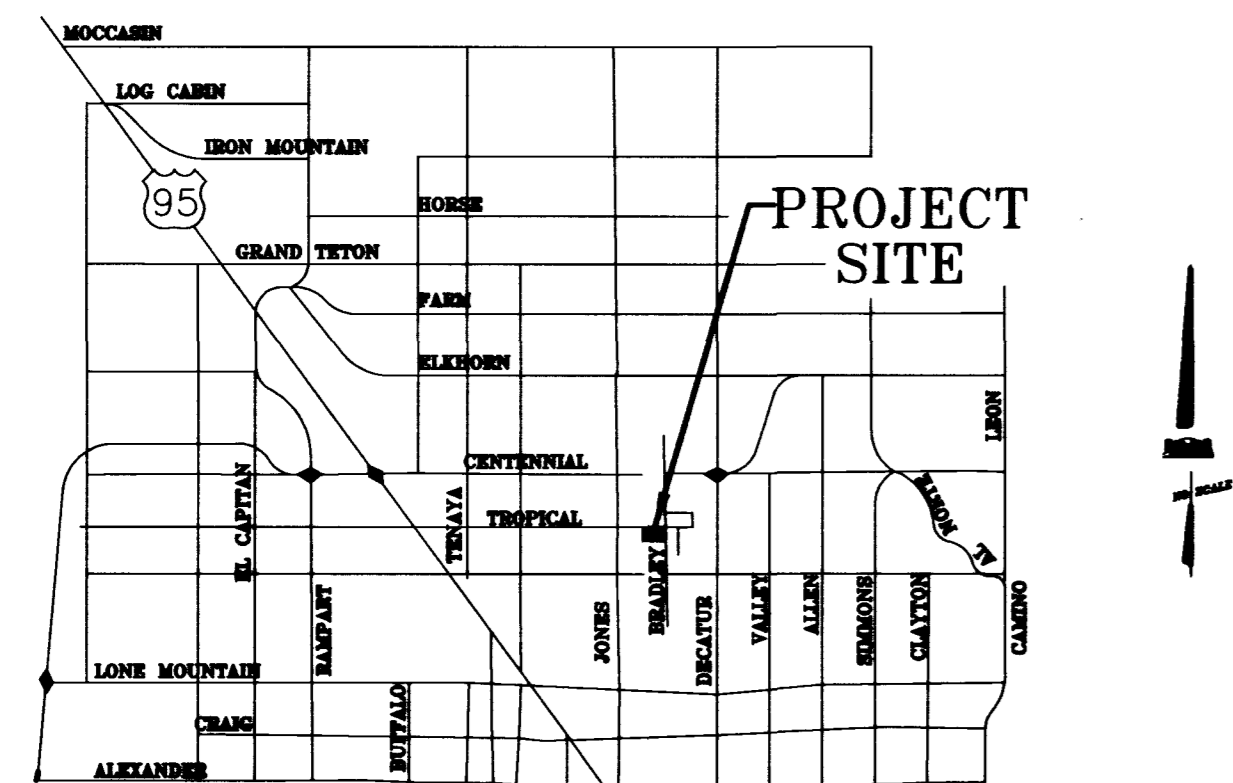


IMPROVEMENT PLANS FOR EAGLE CREEK ESTATES SOUTH UNIT 2 (APN 125-25-301-003) BY PULTE HOMES

1635 VILLAGE CENTER CIRCLE SUITE 250
LAS VEGAS, NEVADA 89134
TELEPHONE (702) 256-7900



ENGINEERING & SURVEYING, INC.



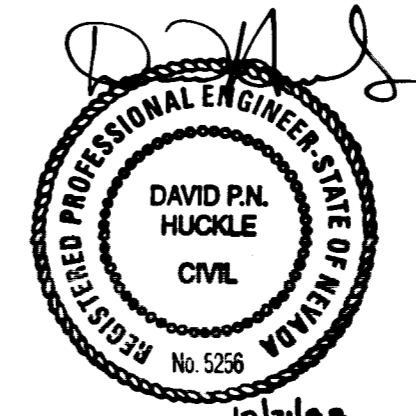
VICINITY MAP

LOCATION: CITY OF LAS VEGAS, NEVADA.
TROPICAL PARKWAY AND BRADLEY ROAD

ACRES: 8.65 ACRES

LEGAL DESCRIPTION

LOT 1 AS SHOWN BY MAP THEREOF ON FILE IN FILE 90, PAGE 89 OF PARCEL MAPS IN THE CLARK COUNTY RECORDER'S OFFICE, CLARK COUNTY, NEVADA, TOGETHER WITH THAT PORTION OF LEON STREET DESCRIBED IN ORDER OF VACATION RECORDED MAY 1, 1998 AS INSTRUMENT 00595 IN BOOK 980501 OF OFFICIAL RECORDS IN THE CLARK COUNTY RECORDER'S OFFICE, CLARK COUNTY, NEVADA, LYING WITHIN SECTION 25, TOWNSHIP 19 SOUTH, RANGE 60 EAST, M.D.M., CITY OF LAS VEGAS, CLARK COUNTY, NEVADA.



PHASE 2
SHEET INDEX

1. COVER SHEET
2. GENERAL NOTES
3. UTILITY PLAN 1
4. GRADING PLAN 1
5. PLAN & PROFILE TROPICAL PARKWAY
6. PLAN & PROFILE CORBETT STREET
7. PLAN AND PROFILE BRADLEY ROAD
8. PLAN AND PROFILE PEPPERPIKE AVENUE
9. PLAN AND PROFILE BRIDGEHAMPTON AVENUE
10. PLAN AND PROFILE KENTLANDS STREET
11. PLAN AND PROFILE OAKTON STREET
12. DETAIL PLAN 1

APPROVALS

APPROVAL OF THESE PLANS IS LIMITED TO THOSE IMPROVEMENTS CONSTRUCTED IN THE DEDICATED RIGHTS-OF-WAY AND/OR DEDICATED EASEMENTS. THIS APPROVAL DOES NOT AUTHORIZE THE CONSTRUCTION OF ANY IMPROVEMENTS THAT DEVIATE FROM ADOPTED STANDARDS AND/OR SPECIFICATIONS EXCEPT THOSE SPECIFICALLY LISTED UNDER "DEVIATIONS FROM STANDARDS". THE ENGINEER SHALL RESOLVE ANY DEVIATION OTHER THAN THOSE LISTED IN "DEVIATIONS FROM STANDARDS" IN FAVOR OF THE UNIFORM STANDARDS DRAWINGS AND SPECIFICATIONS CLARK COUNTY AREA NEVADA.

Charles Karkowski, Jr. 10-28-98
CHARLES KARKOWSKI, JR. P.E. #4748 DATE
PLANNING

City of Las Vegas Fire Department 10/22/98
CITY OF LAS VEGAS FIRE DEPARTMENT DATE
FIRE MARSHALL

Nevada Power Company 10-30-98
NEVADA POWER COMPANY DATE

Southwest Gas Corporation 10-20-98
SOUTHWEST GAS CORPORATION DATE

Sprint/Central Telephone 10-19-98
SPRINT/CENTRAL TELEPHONE DATE

LAS VEGAS VALLEY WATER DISTRICT DATE

BASIS OF BEARINGS

NORTH 88°46'05" EAST BEING THE CENTERLINE OF AZURE DRIVE AS SHOWN BY A MAP ON FILE IN THE OFFICE OF THE COUNTY RECORDER, CLARK COUNTY, NEVADA IN FILE 52 OF RECORDS OF SURVEYS, PAGE 70.

BENCHMARK

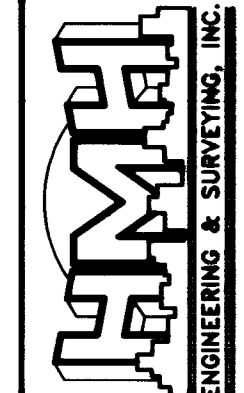
CITY OF LAS VEGAS VERTICAL CONTROL #38-1LV90-36N4 RIVET AND PLATE IN SOUTH TOP OF CURB, ANN ROAD AT CURB ANGLE POINT, 1530' EAST OF CALVERTS STREET. NAVD88 DATUM ELEVATION: 696.2262 METERS (2284.20 FEET)

DESCRIPTION

REV DATE

SHEET D

8080 WEST SAHARA AVENUE, SUITE D
LAS VEGAS, NEVADA 89117
PHONE: (702) 256-7850
FAX: (702) 256-1710



PULTE HOMES
EAGLE CREEK ESTATES SOUTH UNIT 2
COVER SHEET

SHEET

1

OF 12 SHEETS

05201

C:\DRAMINGS\EAGLE\SO\TH\IMPROV\2\EG-sht01a.dwg Tue Oct 13 08:57:48 1998 DRK

