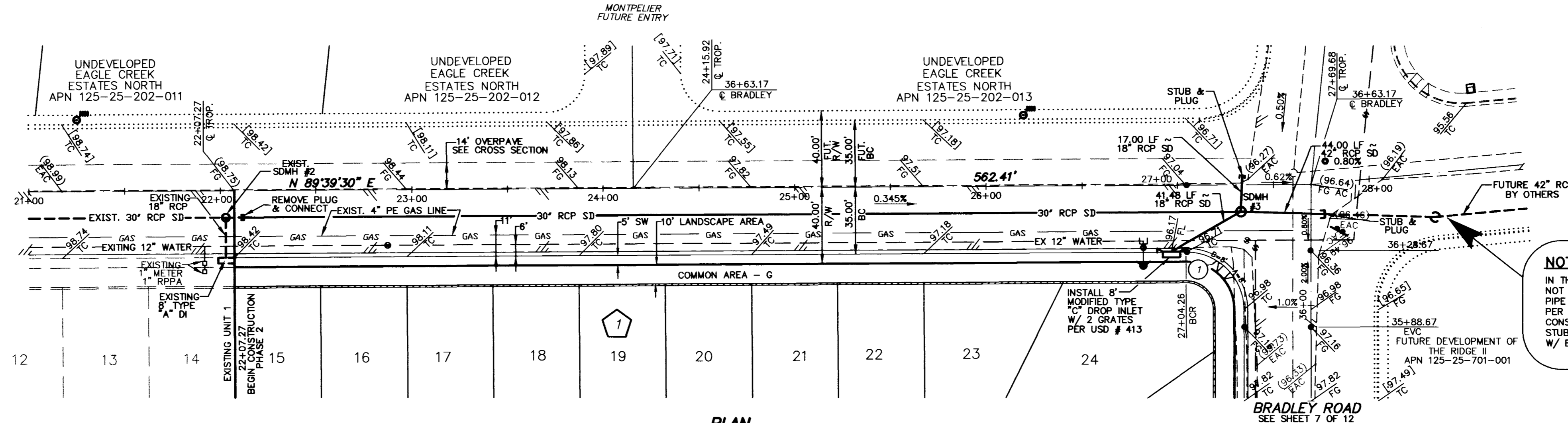


PROFILE
SCALE: HORIZ. 1" = 40'
VERT. 1" = 4'

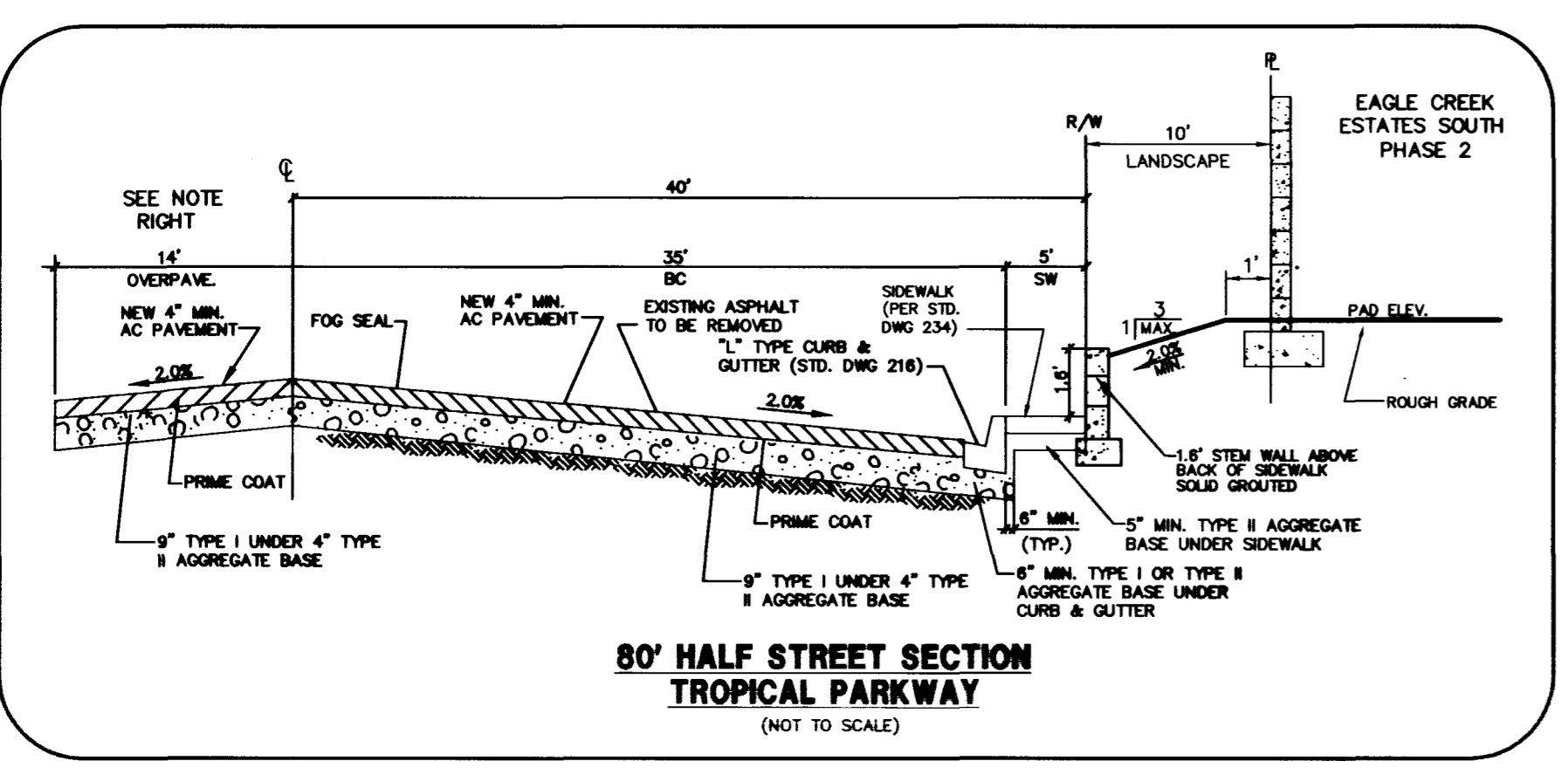


PLAN
SCALE: HORIZ. 1" = 40'

TROPICAL PARKWAY
(PUBLIC STREET)

EXISTING UTILITIES FROM RECORD INFORMATION CONTRACTOR TO VERIFY EXISTING UTILITY LOCATION & ELEVATION

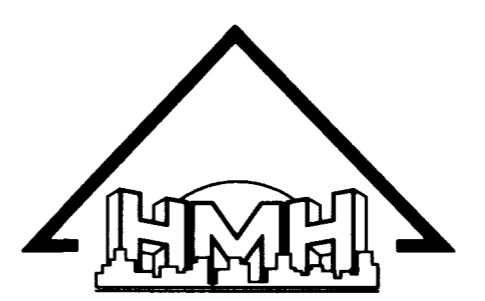
NOTE:
IN THE EVENT RIDGE II DEVELOPMENT DOES NOT CONSTRUCT 42" RCP STORM DRAIN PIPE (CONNECTION TO PROPOSED DESIGN PER THESE PLANS); A MANHOLE WILL BE CONSTRUCTED AT THE END OF 42" RCP STUB TO SERVE AS TEMPORARY BUBBLER W/ BOLTED-DOWN GRATED MANHOLE LID



NOTE:
IF ADJACENT DEVELOPER CONSTRUCTS HALF STREET IMPROVEMENTS PRIOR TO CONSTRUCTION OF THE OVER-PAVING SHOWN ON CROSS SECTION (THIS PAGE), SUCH OVERPAVING WILL NOT BE NECESSARY.

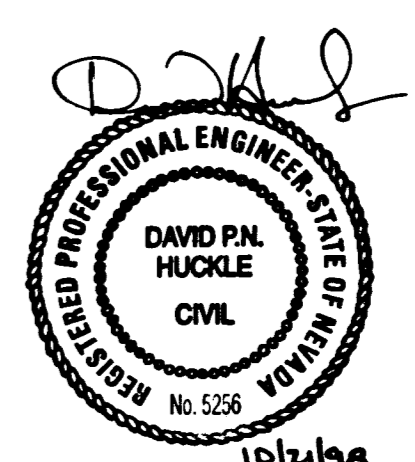
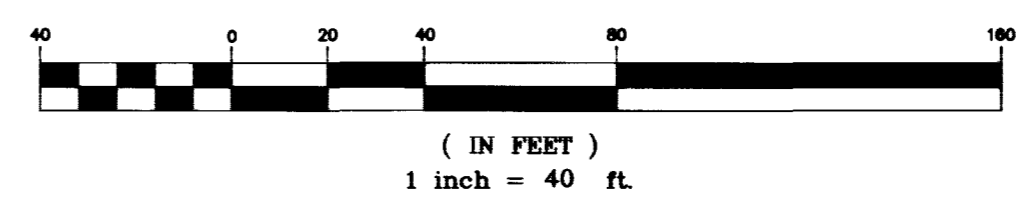
CURVE TABLE

CURVE	DELTA	RADIUS	LENGTH	TANGENT
BC 1	90°21'49"	30.00'	47.31'	30.19'



NORTH
SCALE: 1" = 40'

GRAPHIC SCALE

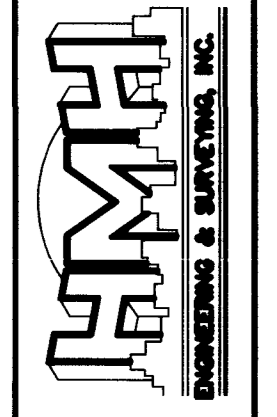


Avoid cutting underground utility lines. It's costly.
Call before you Dig.
1-800-227-2600
UNDERGROUND SERVICE (USA)

BASIS OF BEARING
NORTH 88°46'05" EAST BEING THE CENTERLINE OF AZURE DRIVE AS SHOWN BY A MAP ON FILE IN THE OFFICE OF THE COUNTY THE COUNTY RECORDER, CLARK COUNTY, NEVADA IN FILE 52 OF RECORDS OF SURVEYS, PAGE 70.

BENCHMARK
CITY OF LAS VEGAS VERTICAL CONTROL #38-1LV90-36N4 RIVET AND PLATE IN SOUTH TOP OF CURB, ANN ROAD AT CURB ANGLE POINT, 1530' EAST OF CALVERTS STREET. NAVD88 DATUM ELEVATION: 696.2262 METERS (2284.20 FEET)

8080 WEST SAHARA AVENUE-SUITE D
LAS VEGAS, NEVADA 89117
PHONE: (702) 256-7850
FAX: (702) 256-1710



PULTE HOMES
EAGLE CREEK ESTATES SOUTH UNIT 2
PLAN AND PROFILE TROPICAL PARKWAY

SHEET

5

OF 12 SHEETS

C:\DRAWINGS\EAGLE\TROPICAL\TROPICAL\21E2-sht05.dwg Mon Oct 12 15:44:44 1998 DRK

11103

1071-4553-2

