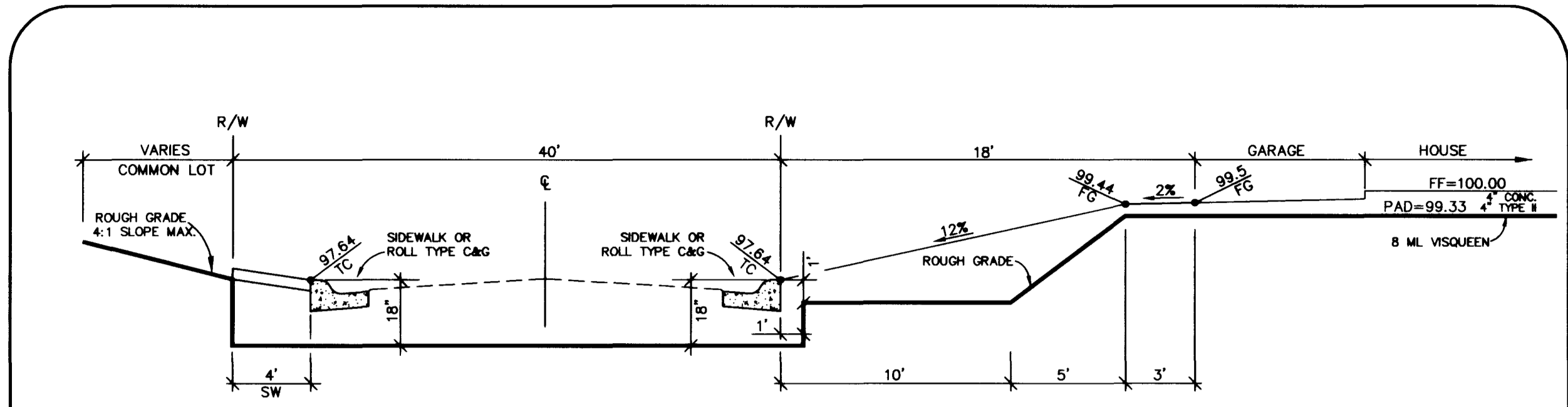
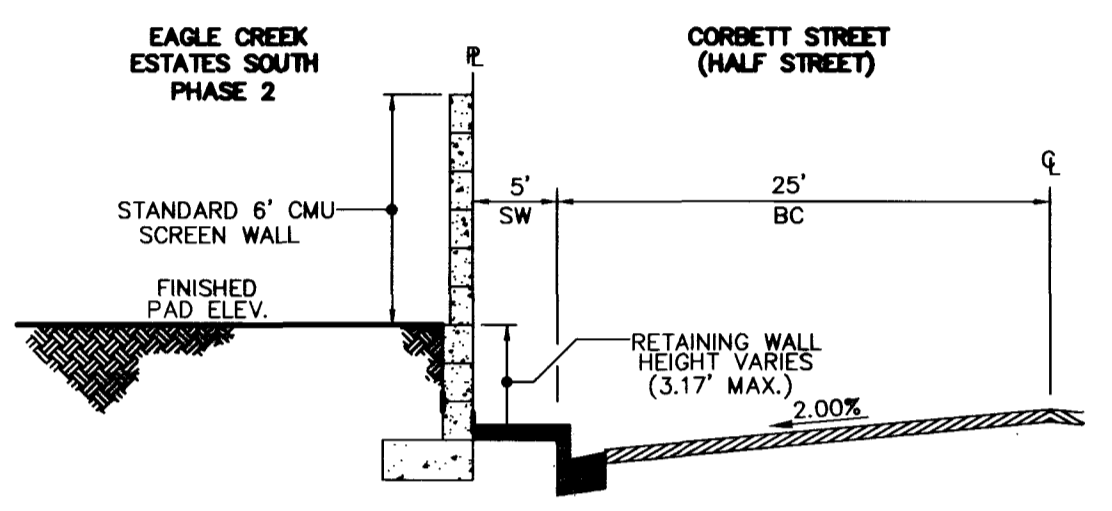


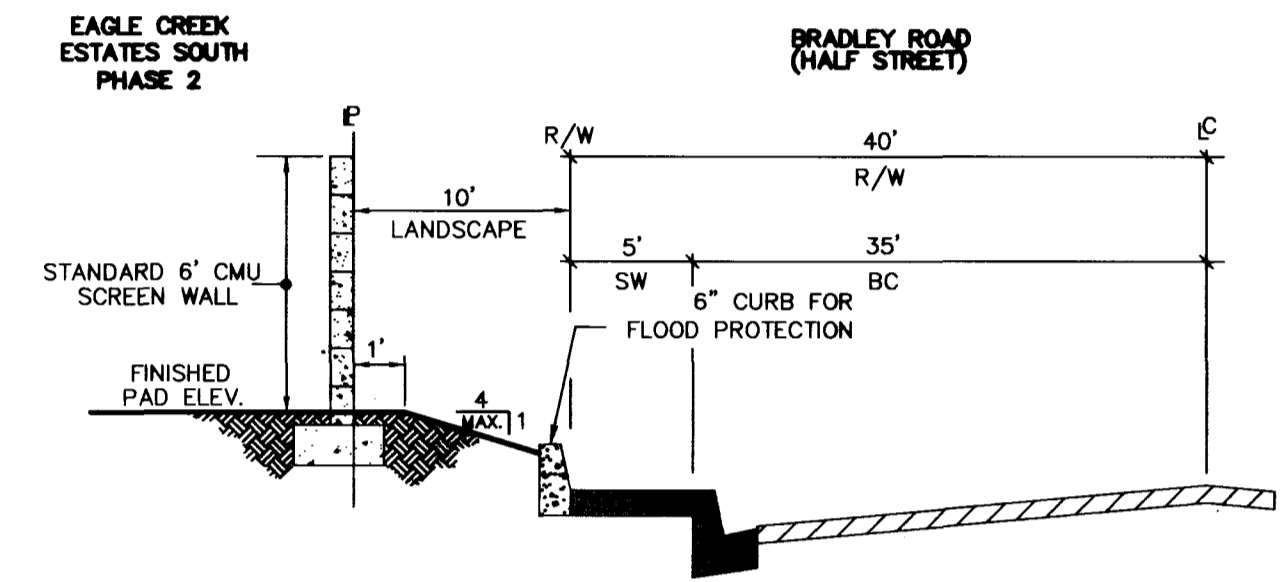
1
12
**TYPICAL ROUGH GRADE PAD & STREET
CROSS SECTION DETAIL (TYPICAL)**
N.T.S.



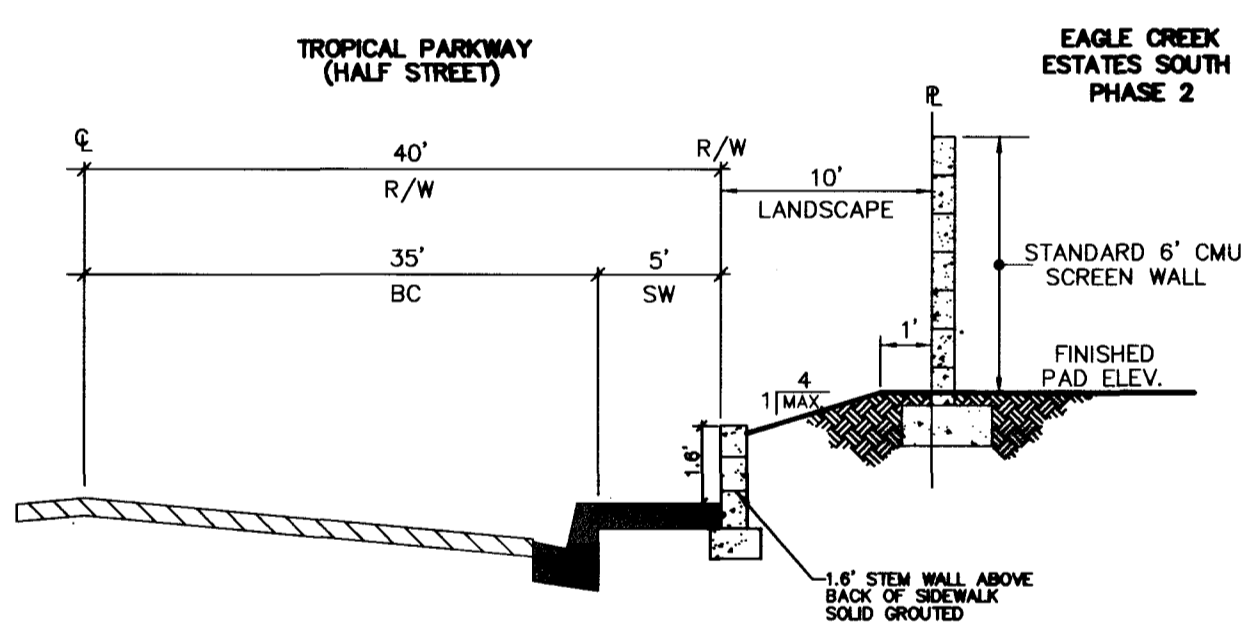
7
12
**TYPICAL ROUGH GRADE PAD, STREET & COMMON
LOT CROSS SECTION DETAIL (TYPICAL)**
N.T.S.



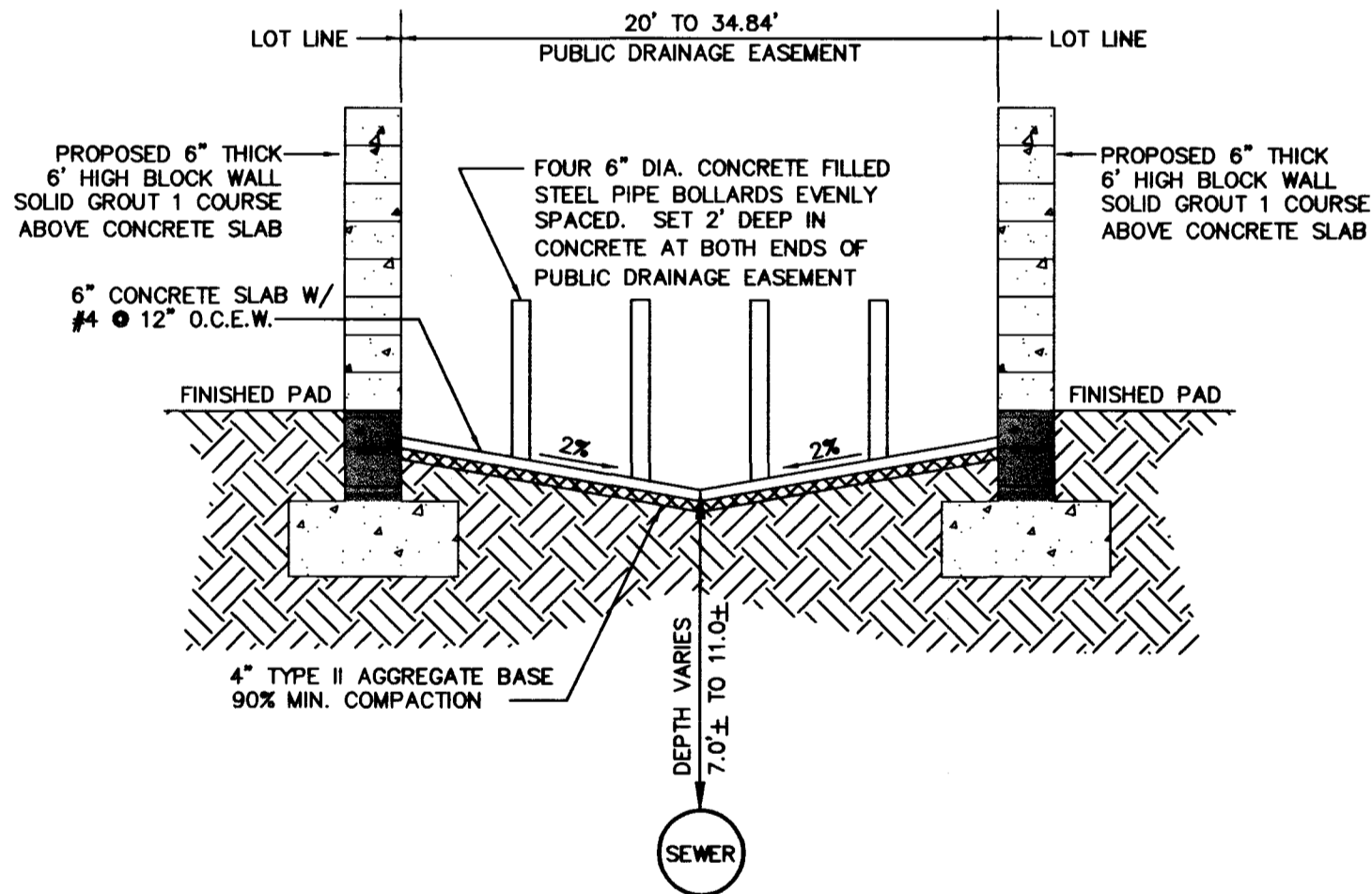
2
12
**CORBETT STREET
REAR YARD W/ PERIMETER WALL
CROSS SECTION DETAIL**
N.T.S.



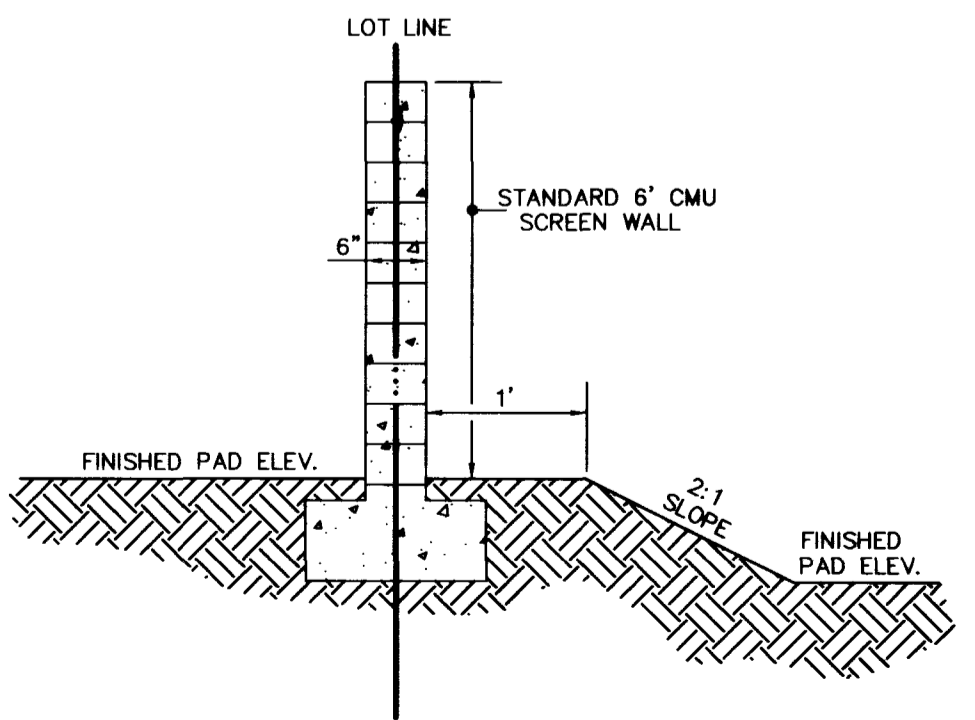
5
12
**BRADLEY ROAD
REAR YARD W/ PERIMETER WALL
CROSS SECTION DETAIL**
N.T.S.



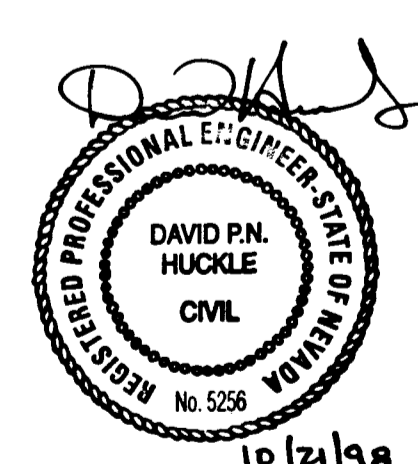
3
12
**TROPICAL PARKWAY
REAR YARD W/ PERIMETER WALL
CROSS SECTION DETAIL**
N.T.S.



6
12
**PUBLIC DRAINAGE AND SEWER
EASEMENT (TO BE PRIVATELY MAINTAINED)**
N.T.S.



4
12
**REAR & SIDE YARD WALL
CROSS SECTION DETAIL**
N.T.S.



Avoid cutting underground utility lines. It's costly.
Call before you Dig.
1-800-227-2600
UNDERGROUND SERVICE (USA)

BASIS OF BEARING
NORTH 88°46'05" EAST BEING THE CENTERLINE OF AZURE DRIVE AS SHOWN BY A MAP ON FILE IN THE OFFICE OF THE COUNTY THE COUNTY RECORDER, CLARK COUNTY, NEVADA IN FILE 52 OF RECORDS OF SURVEYS, PAGE 70.

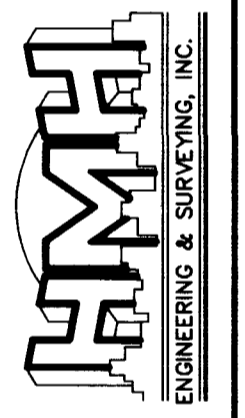
BENCHMARK
CITY OF LAS VEGAS VERTICAL CONTROL #38-1L/V90-36N4 RIVET AND PLATE IN SOUTH TOP OF CURB, ANN ROAD AT CURB ANGLE POINT, 1530' EAST OF CALVERTS STREET. NAVD88 DATUM ELEVATION: 696.2262 METERS (2284.20 FEET)



DESCRIPTION

REV. DATE

8080 WEST SAHARA AVENUE-SUITE D
LAS VEGAS, NEVADA 89117
PHONE: (702) 256-7850
FAX: (702) 256-1710



PULTE HOMES
EAGLE CREEK ESTATES SOUTH UNIT 2
DETAIL PLAN 1

SHEET

12

OF 12 SHEETS

C:\DRW\INGS\EAGLE SOUTH\1\MPROV2\EG-sht12a.dwg Tue Oct 13 09:13:40 1998 DRK

05201

11110

1074-4555-2

