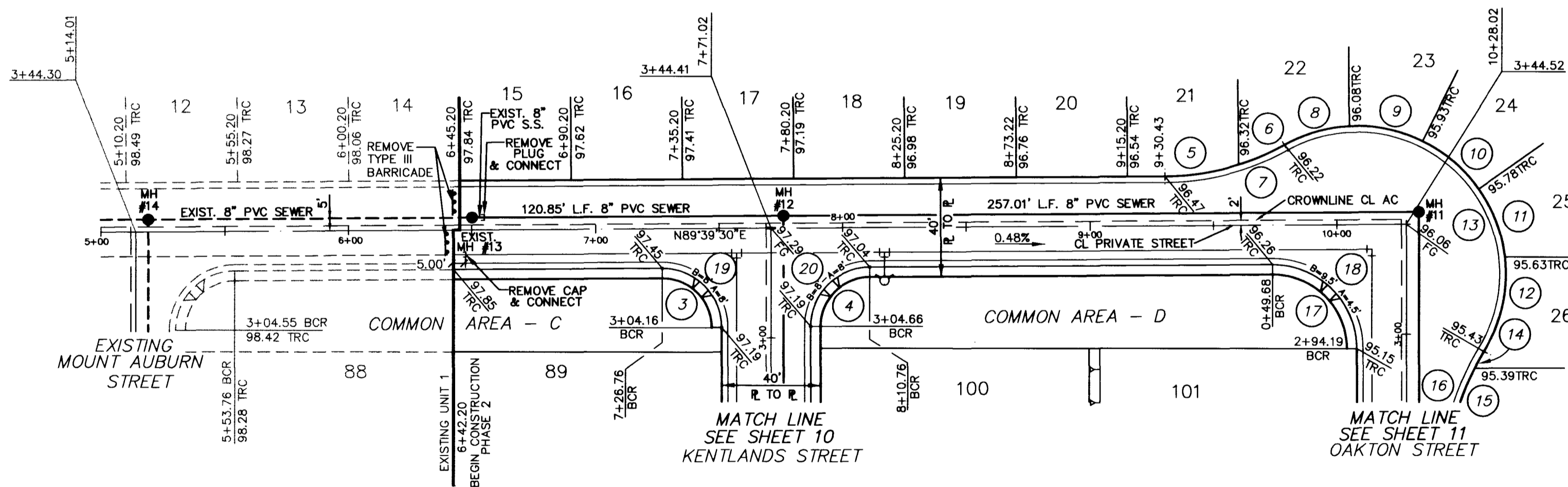


PROFILE
SCALE: HORIZ. 1" = 40'
VERT. 1" = 4'

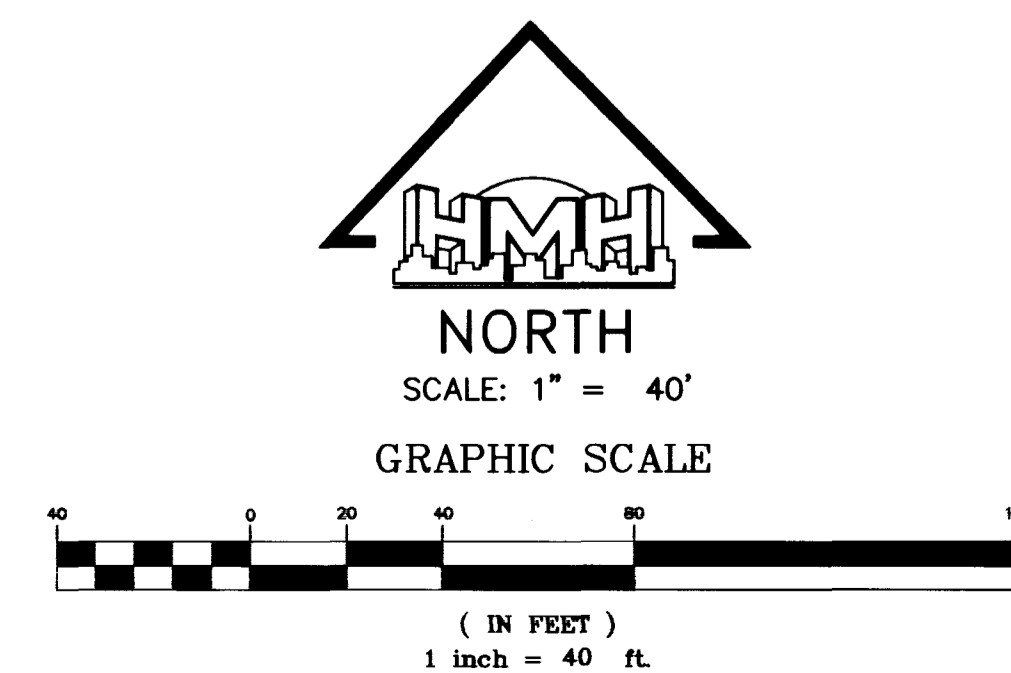
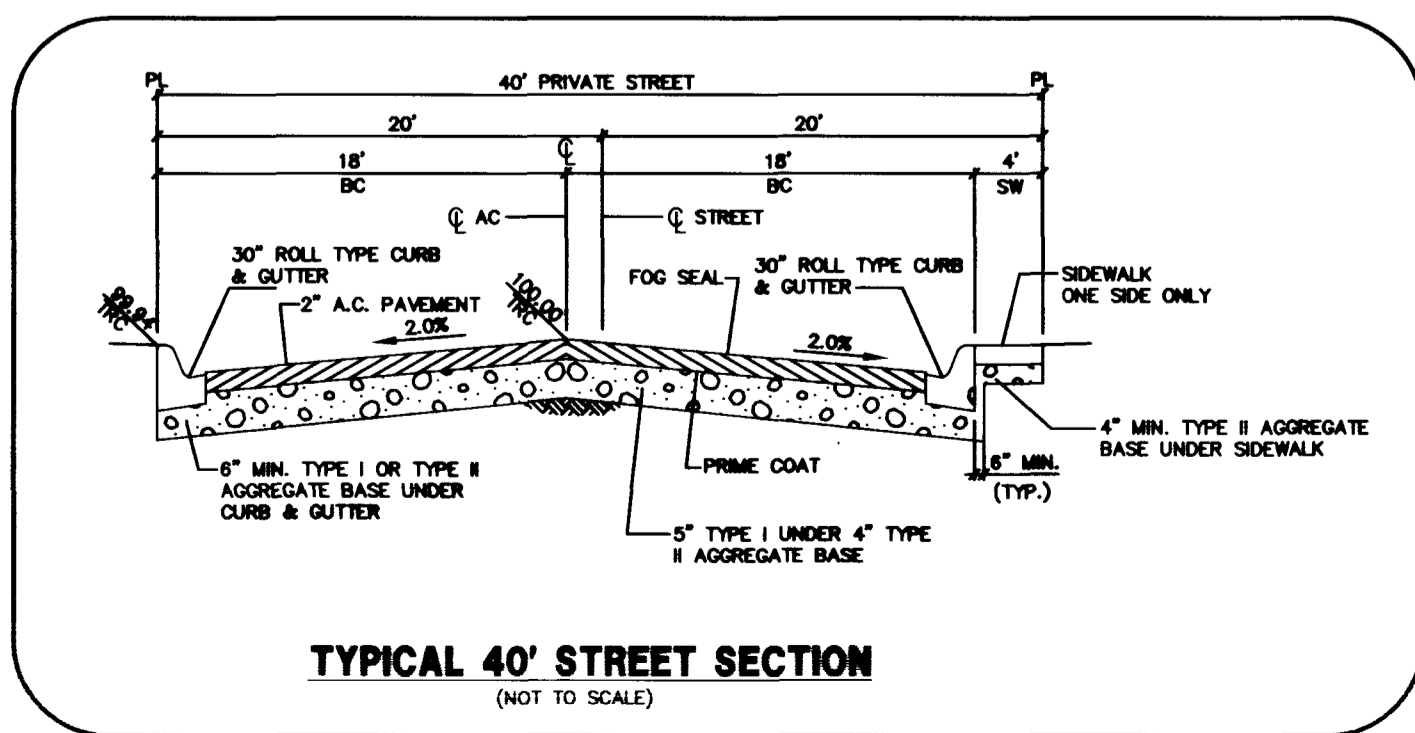
NOTE:
ALL STATIONS ARE REFERENCED TO CENTERLINE OF PRIVATE STREET. NOT CENTERLINE OF AC.
ALL GRADES SHOWN IN PROFILE ARE REFERENCED TO CENTERLINE OF AC (CROWN LINE) AT THAT STATION.
SEE TYPICAL SECTION



PLAN
SCALE: HORIZ. 1" = 40'
PEPPERPIKE AVENUE
(PRIVATE DRIVE, P.U.E., C.L.V. SEWER EASEMENT & PUBLIC DRAINAGE EASEMENT)

CURVE TABLE

CURVE	DELTA	RADIUS	LENGTH	TANGENT
BSW 3	90°21'49"	20.00'	31.54'	20.13'
BSW 4	89°38'11"	20.00'	31.29'	19.87'
BC 5	1°21'8.52"	100.00'	30.22'	15.33'
BC 6	1°38'26"	100.00'	20.32'	10.19'
BC 7	2°57'18"	100.00'	50.54'	25.82'
BC 8	2°22'39"	60.00'	27.62'	14.06'
BC 9	2°21'42"	60.00'	30.57'	15.82'
BC 10	2°38'52"	60.00'	30.00'	15.32'
BC 11	2°30'43"	60.00'	29.86'	15.24'
BC 12	3°58'42"	60.00'	38.77'	20.65'
BC 13	1°50'42.24"	60.00'	15.782'	229.58'
BC 14	0°42'00"	104.00'	7.87'	3.93'
BC 15	2°54'08"	104.00'	46.80'	23.81'
BC 16	3°07'08"	104.00'	54.67'	27.98'
BC 17	9°21'49"	30.00'	47.31'	30.19'
BC 18	9°18'44"	34.00'	53.59'	34.19'
BC 19	9°21'49"	24.00'	37.35'	24.15'
BC 20	89°38'11"	24.00'	37.55'	23.85'



Avoid cutting underground utility lines. It's costly.

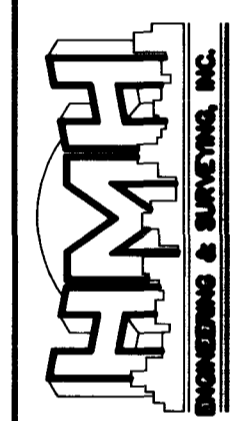
Call before you Dig.
1-800-227-2600
UNDERGROUND SERVICE (USA)

BASIS OF BEARING
NORTH 88°46'05" EAST BEING THE CENTERLINE OF AZURE DRIVE AS SHOWN BY A MAP ON FILE IN THE OFFICE OF THE COUNTY THE COUNTY RECORDER, CLARK COUNTY, NEVADA IN FILE 52 OF RECORDS OF SURVEYS, PAGE 70.

BENCHMARK
CITY OF LAS VEGAS VERTICAL CONTROL #38-1LV90-36N4 RIVET AND PLATE IN SOUTH TOP OF CURB, ANN ROAD AT CURB ANGLE POINT, 1530' EAST OF CALVERTS STREET. NAVD88 DATUM ELEVATION: 696.2262 METERS (2284.20 FEET)

REV	DATE	DESCRIPTION

BOBO WEST SAHARA-SUITE D
LAS VEGAS, NEVADA 89117
PHONE: (702) 256-7850
FAX: (702) 256-1710



PULTE HOMES
EAGLE CREEK ESTATES SOUTH UNIT 2
PLAN AND PROFILE PEPPERPIKE AVENUE

SHEET
8

OF 12 SHEETS

C:\DRAWINGS\TABLE\SOUTH\IMPROV\2\2-sht-c08a.dwg Mon Oct 12 16:36:01 1998 DKM

05201

11106

1074-4555-2

