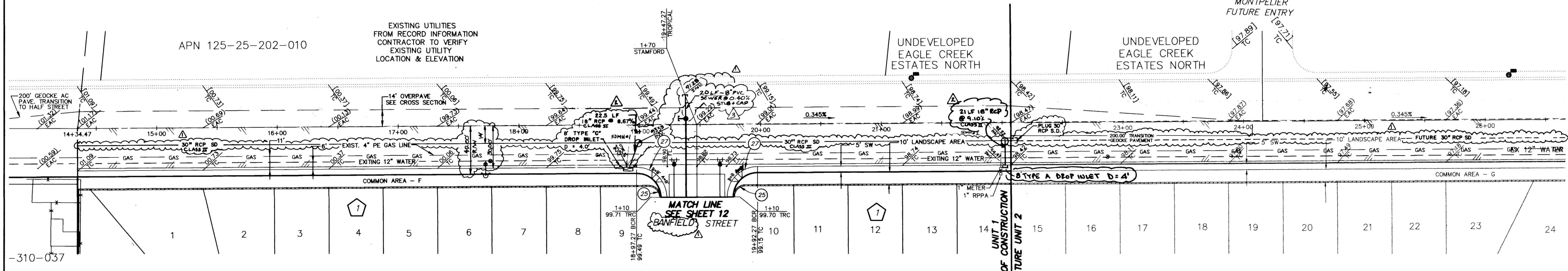
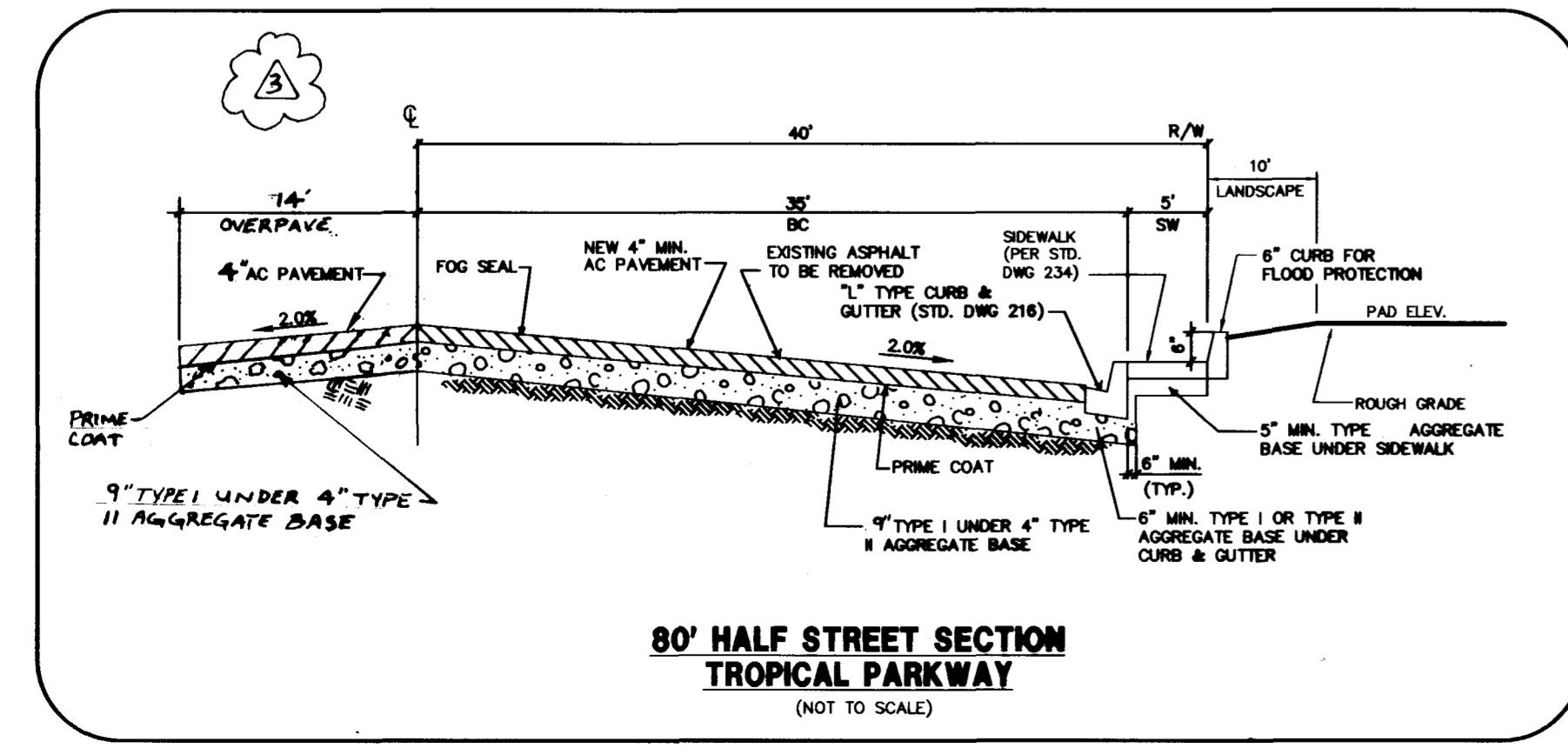


**PROFILE**  
SCALE: HORIZ. 1" = 40'  
VERT. 1" = 4'



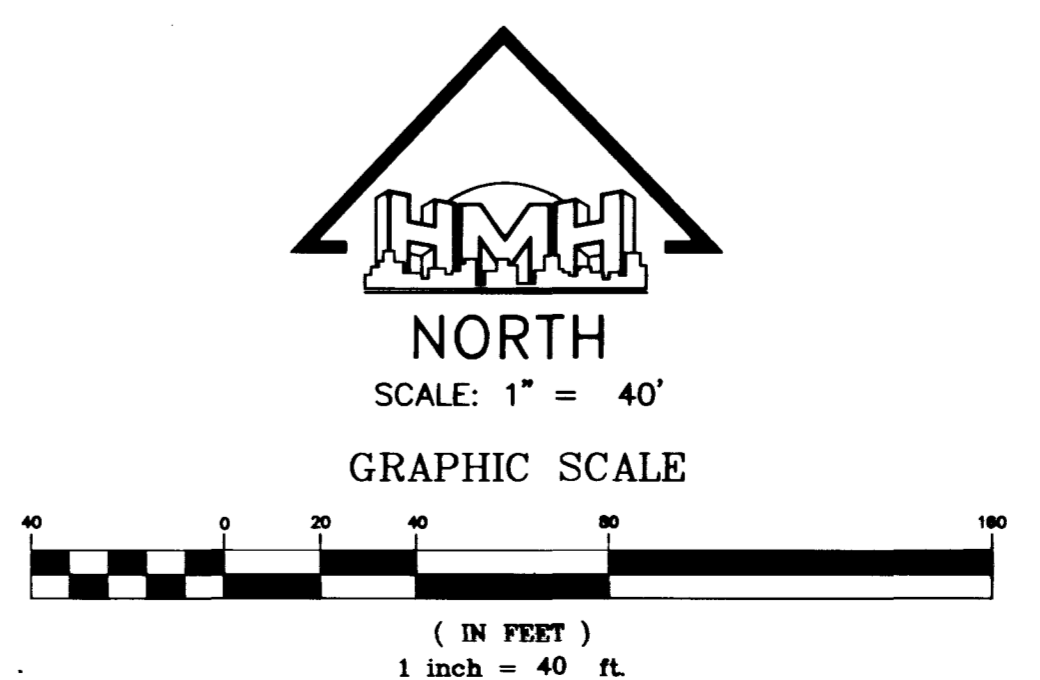
**PLAN**  
SCALE: HORIZ. 1" = 40'

**TROPICAL PARKWAY**  
(PUBLIC STREET)



**CURVE TABLE**

CURVE	DELTA	RADIUS	LENGTH	TANGENT
25	90°00'02"	10.00'	15.71'	10.00'
27	90°00'00"	25.00'	39.27'	25.00'



**BENCHMARK**  
CITY OF LAS VEGAS VERTICAL CONTROL #38-11V90-36N4  
RIVET AND PLATE IN SOUTH TOP OF CURB, ANN ROAD AT  
CURB ANGLE POINT, 1530' EAST OF CALVERTS STREET.  
NAVDB8 DATUM ELEVATION: 696.2262 METERS (2284.20 FEET)

**REVISIONS**

NO.	DATE	DESCRIPTION
1	5/11/98	ADD 20\"/>

**PROJECT INFORMATION**

8080 WEST SAHARA AVENUE - SUITE D  
LAS VEGAS, NEVADA 89117  
PHONE: (702) 256-7850  
FAX: (702) 256-1710

**ENGINEER**  
DAVID PHIL HUCKLE  
REGISTERED PROFESSIONAL ENGINEER - STATE OF NEVADA  
No. 5256

**PROJECT NAME**  
EAGLE CREEK ESTATES SOUTH UNIT 1  
PLAN AND PROFILE TROPICAL PARKWAY

**SHEET**  
7  
OF 13 SHEETS

C:\DRAWINGS\EAGLE\SO\TH\1\Impro\1\ET-sht07.dwg Mon Apr 13 08:02:41 1998 DBK

05201

10325

7073 5

1074-4555-1

