

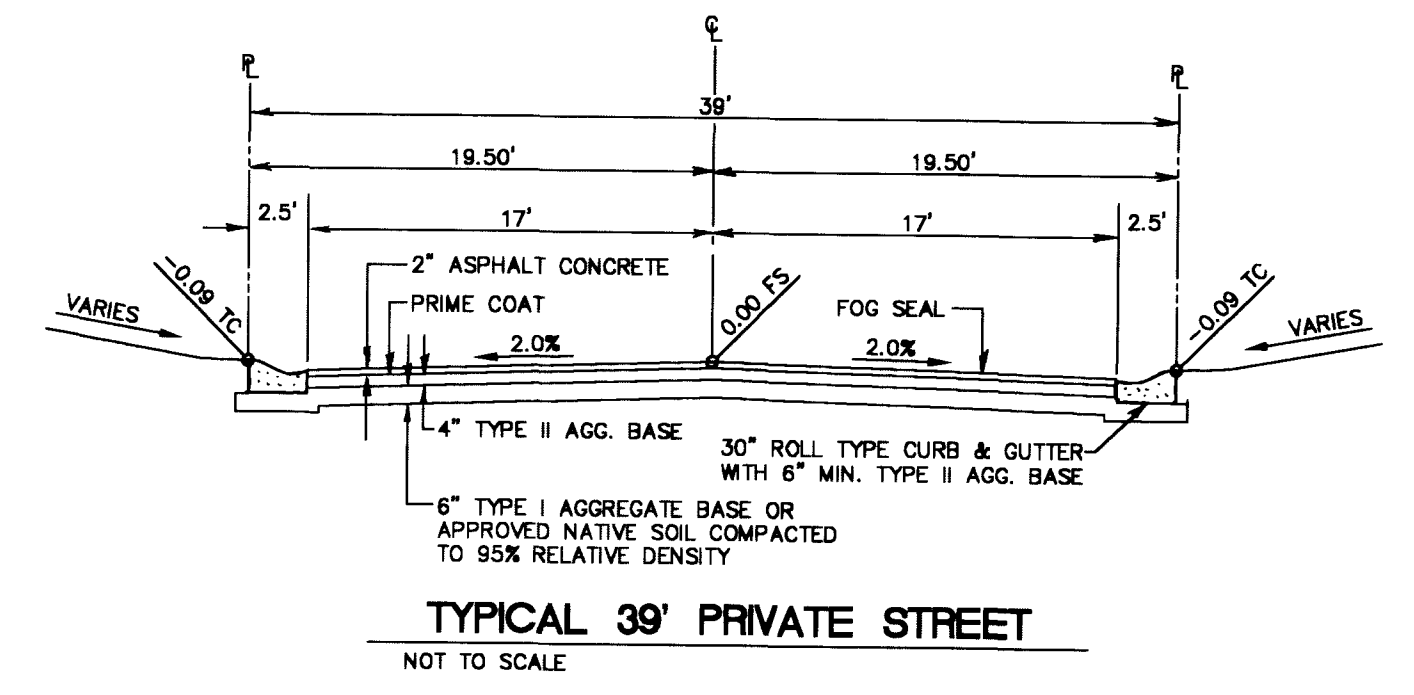
CONSTRUCTION NOTES

- 1 CONST. 2" MIN. AC OVER 4" TYPE II AB OVER 6" TYPE I AB
- 3 CONST. 24" "L" TYPE CURB AND GUTTER PER STD. DWG. NO. 216
- 4 CONST. 5" CONC SIDEWALK PER STD DWG. NO. 234
- 22 INSTALL 4" PVC SEWER LATERAL AND CAP
- 24 REMOVE CAP AND CONNECT TO EXISTING
- 25 INSTALL SEWER BACK WATER VALVE PER UIC SD-29
- 30 INSTALL 8" PVC WATERLINE C-900 CL 150 PER UDS PLATE NO.6A, 6B, & 6C
- 32 INSTALL 34" METER BOX WITH 1" LATERAL PER UDS PLATE NO. 1A

AN EASEMENT IN FAVOR OF LAS VEGAS VALLEY DISTRICT A QUASI-MUNICIPAL CORPORATION FOR PIPELINES.
 RECORDED : _____
 DOCUMENT No : _____ OFFICIAL RECORDS.

CURVE DATA TABLE

CURVE	DELTA	RADIUS	LENGTH	TANGENT
C1	92°05'28"	20.00'	32.15'	20.74'
C2	02°14'36"	11000.00'	39.15'	19.58'
C3	01°50'55"	11020.50'	32.92'	16.45'
C4	88°28'38"	20.00'	30.88'	19.48'
C5	91°07'42"	20.00'	31.81'	20.40'



BASIS OF BEARINGS

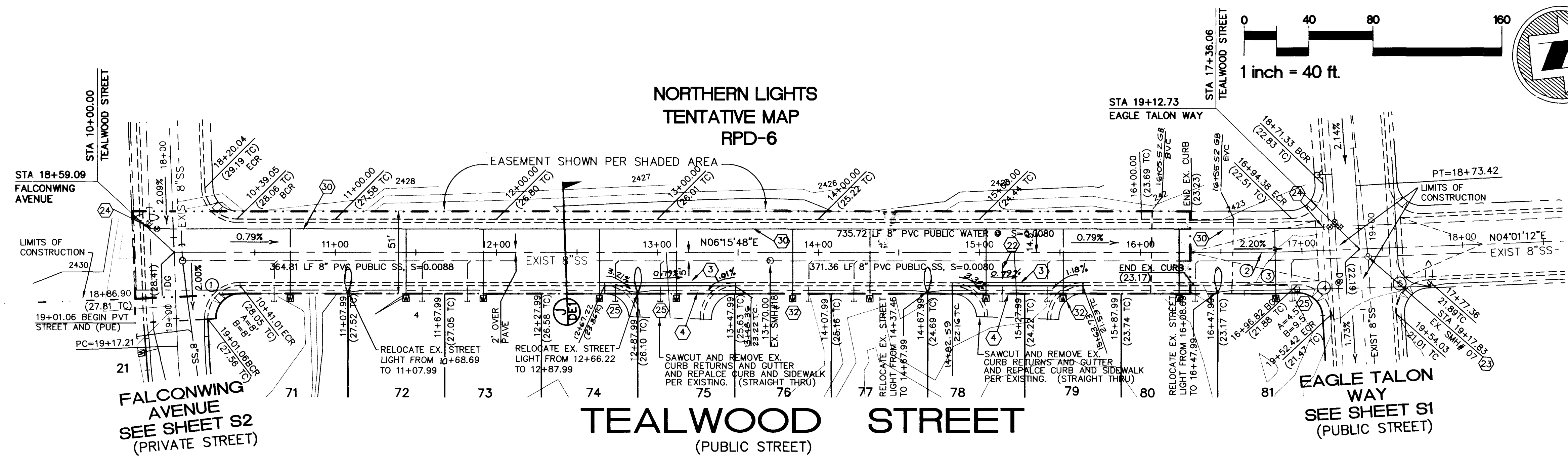
BEING THE SOUTH LINE OF THE SOUTHEAST QUARTER (SE 1/4) OF SECTION 16, TOWNSHIP 19 SOUTH, RANGE 60 EAST, M.D.M., CITY OF LAS VEGAS, CLARK COUNTY, NEVADA AS SHOWN BY MAP THEREOF ON FILE, IN BOOK 74 PAGE 01 OF PLATS, IN THE OFFICE OF THE CLARK COUNTY, NEVADA RECORDER. THE BEARING BEING SOUTH 85°49'40" EAST

PROJECT BENCHMARK NAVD88

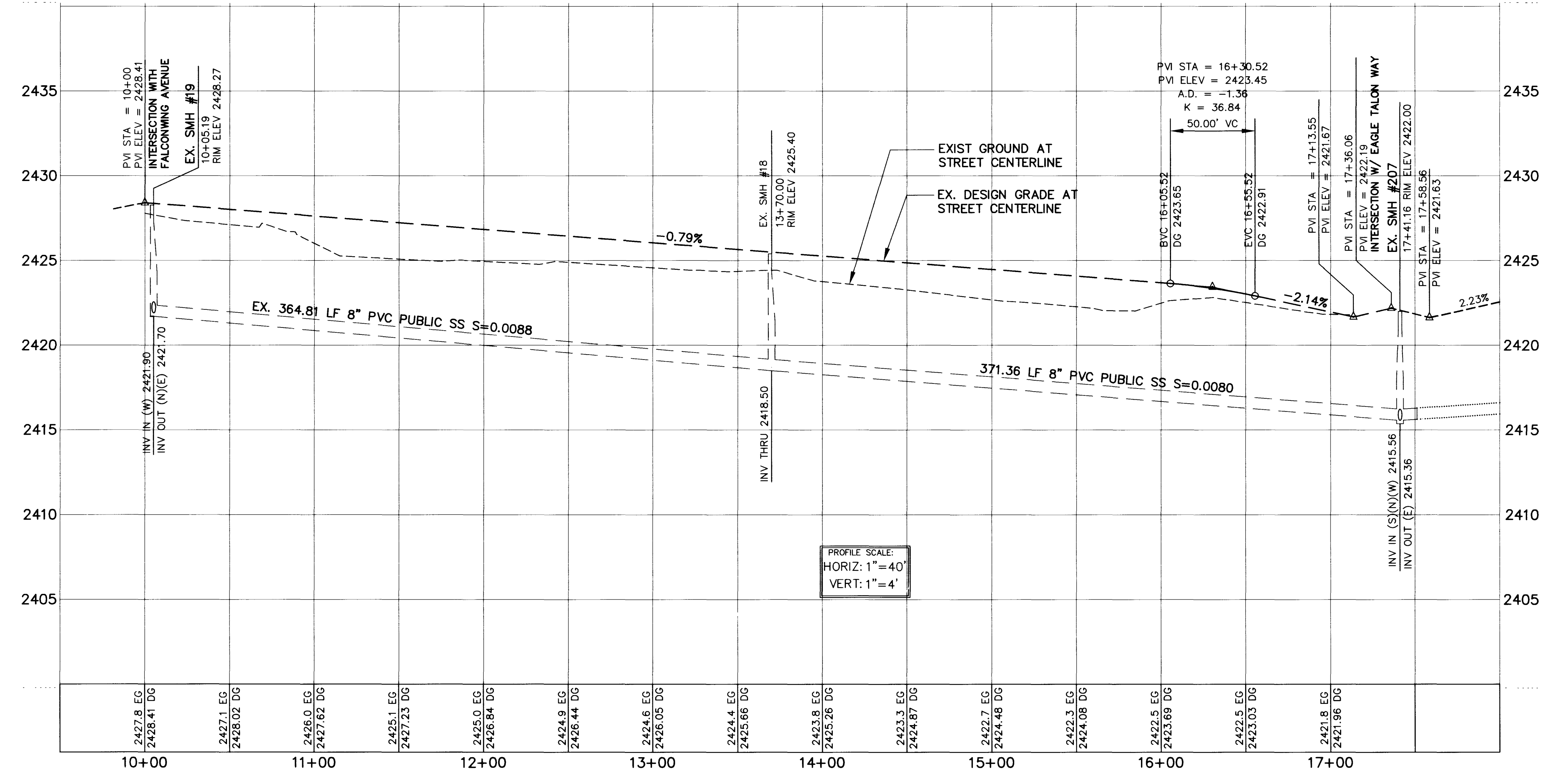
LOCATION AND DESCRIPTION	NAVD88 DATUM=
NAVD88 NO.6 STATION 1LV9016N4 1-1/2" BRASS TAG ON IRON PIPE, RLS 1552 AT GRAND TETON DRIVE AND CIMARRON ROAD	2477.43 FT 755.1215m

Call before you Dig
 1-800-227-2600

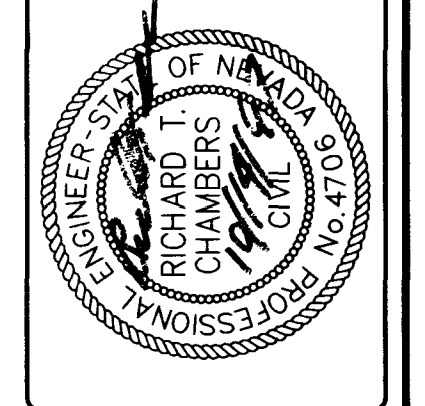
JOB NO: _____
 DWG NO: _____
 SCALE: 1"=40'
 DATE: 7/30/97
 DESIGN BY: DIV
 SHEET NO: **S6**
 14 OF 15 SHEETS



NOTE:
 1. TEALWOOD HALF STREET WILL BE BUILT AS PART OF THIS PROJECT. DESIGN GRADES SHOWN ARE BASED ON PRIOR APPROVED CLV PLANS #107Y-4460-2AND 107-4460-4



NO.	DATE	BY	APP'D	REVISION DESCRIPTION



RHODES ENGINEERING SERVICES
 LAND PLANNING • ENGINEERING • SURVEYING
 4630 SOUTH ARVILLE, SUITE A
 LAS VEGAS, NEVADA 89103
 (702) 873-5338

EAGLE HEIGHTS AT ELKHORN SPRINGS
TEALWOOD STREET - PLAN AND PROFILE

