

Call before you Overhead  
1-702-593-6111  
NEVADA POWER ENVIRONMENT AND SAFETY SERVICES DEPARTMENT

Call before you Dig  
1-800-227-2600

**BENCHMARK**

1C90 32SES BEING A RIVET AND SQUARE ALUMINUM PLATE IN A CONCRETE MONUMENT, 3' NORTHWEST OF STOP SIGN, 60' NORTH AND 30' WEST OF DURANGO DRIVE AND LONE MOUNTAIN ROAD.

ELEVATION = 2911.56' NAVD 88

**BASIS OF BEARING**

NORTH 01°17'55" EAST, BEING THE BEARING OF THE WEST LINE OF THE SOUTHWEST QUARTER (SW 1/4) OF THE SOUTHWEST QUARTER OF SECTION 33, TOWNSHIP 19 SOUTH, RANGE 60 EAST, M.D.M., CLARK COUNTY, NEVADA AS SHOWN RECORDED IN FILE 51, ON PAGE 34, OF PARCEL MAPS IN THE CLARK COUNTY RECORDER'S OFFICE.

SCALE: HORIZ.-1"=40'  
VERT.-1"=4'

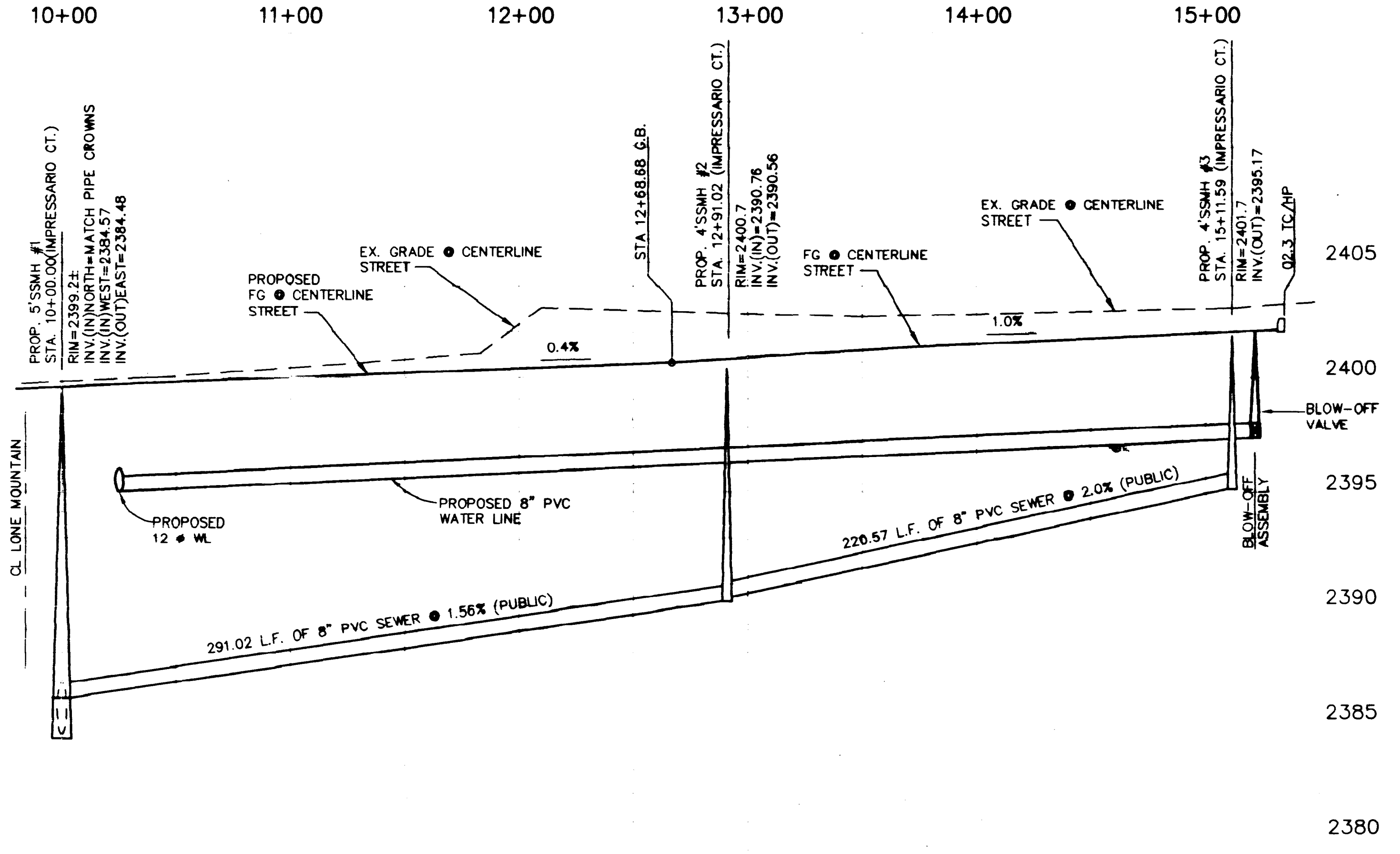
NO.	DATE	REVISION	DESCRIPTION
1	1/17/98	BY: [Signature]	NEW PROPERTY SHOWN
2	1/17/98	BY: [Signature]	REVISED

**IMPRESSARIO COURT  
PLAN AND PROFILE FOR  
DOMINION ESTATES**

**CPS**  
CONSULTING ENGINEERS OF NEVADA, INC.  
CALDWELL RICHARDS EGGENBERG  
4280 S. MARYLAND PARKWAY  
LAS VEGAS, NEVADA 89119  
PHONE (702) 737-3307  
FAX (702) 737-3394

**DAVID D. WILSON**  
CIVIL  
1/15/98

SHEET **C9** OF **9** DRWG. NO. **2782**



12782.DRAWINGS\2782P2.P2 F1 JAN 30 05:14 28 1998 CHS ENGINEERS - JUAN

177798-WINNE-2782P2

6097

