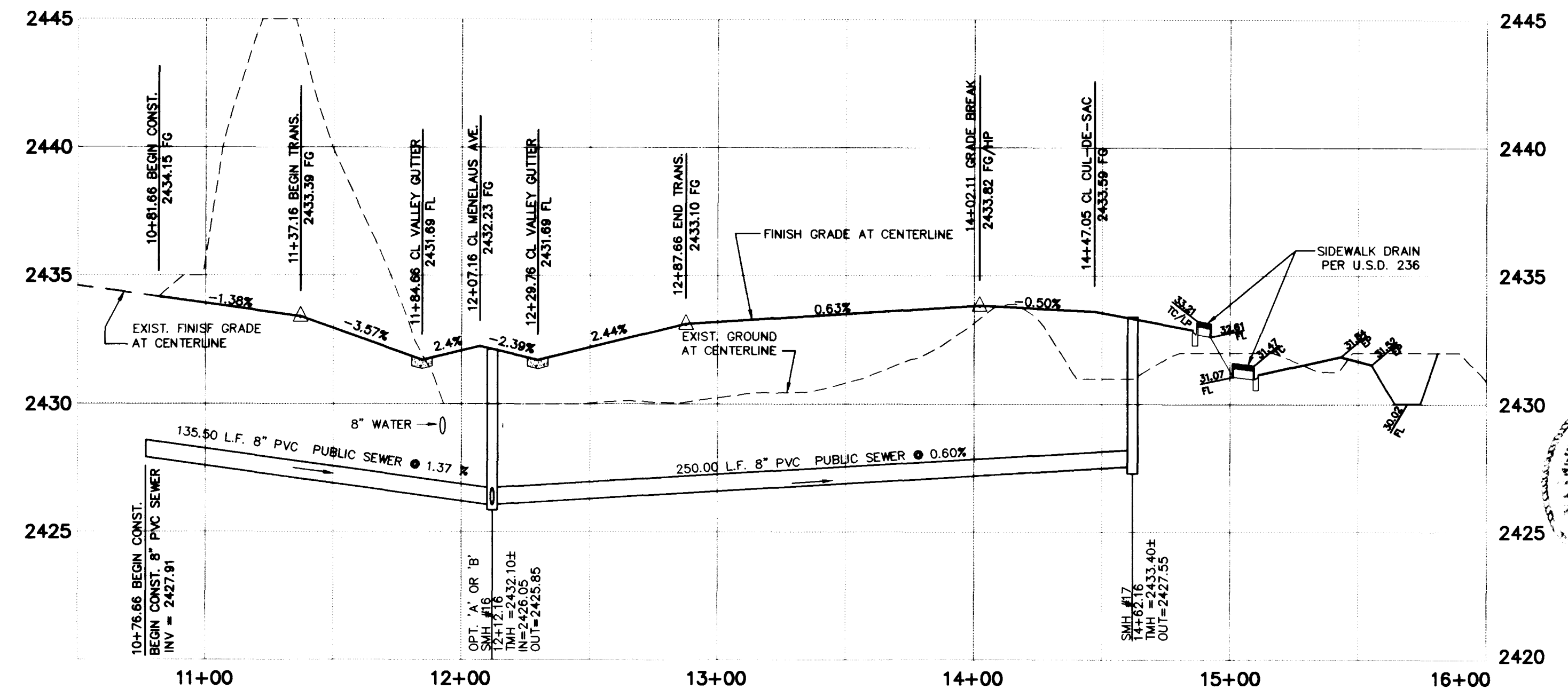


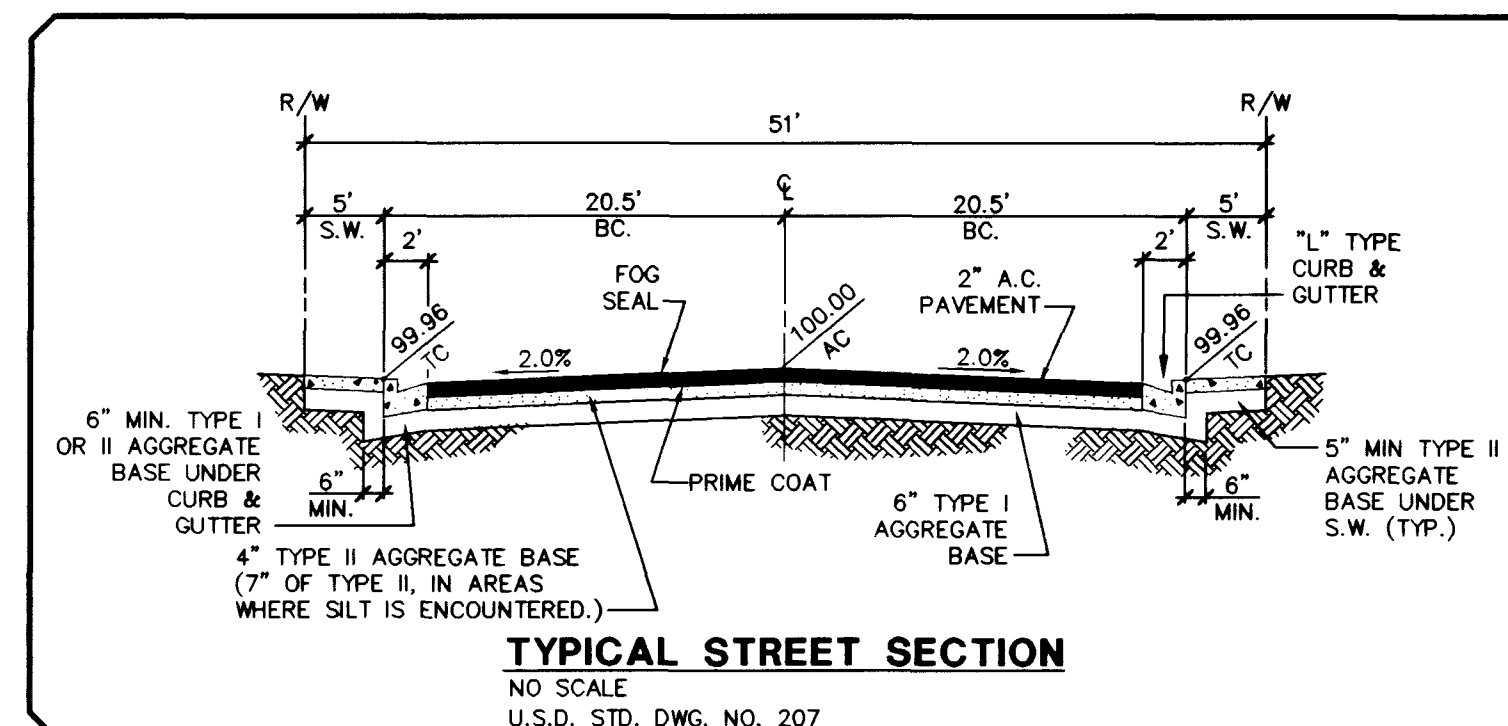
### URANIA COURT (PUBLIC)

**PROFILE**  
 SCALE: HORIZ. 1" = 40'  
 VERT. 1" = 4'



### RHEA STREET (PUBLIC)

**PROFILE**  
 SCALE: HORIZ. 1" = 40'  
 VERT. 1" = 4'



**BENCHMARK**  
 CLV BM = 1 LV90 21 NG  
 3" BRASS CAP USC & GS BM #113, 3/4 MILE N OF 1 LV9022NME6,  
 50' E OF OLD RAILROAD BED.  
 ELEV. = 748.2884 (METERS) 2454.91 (NAVD80)

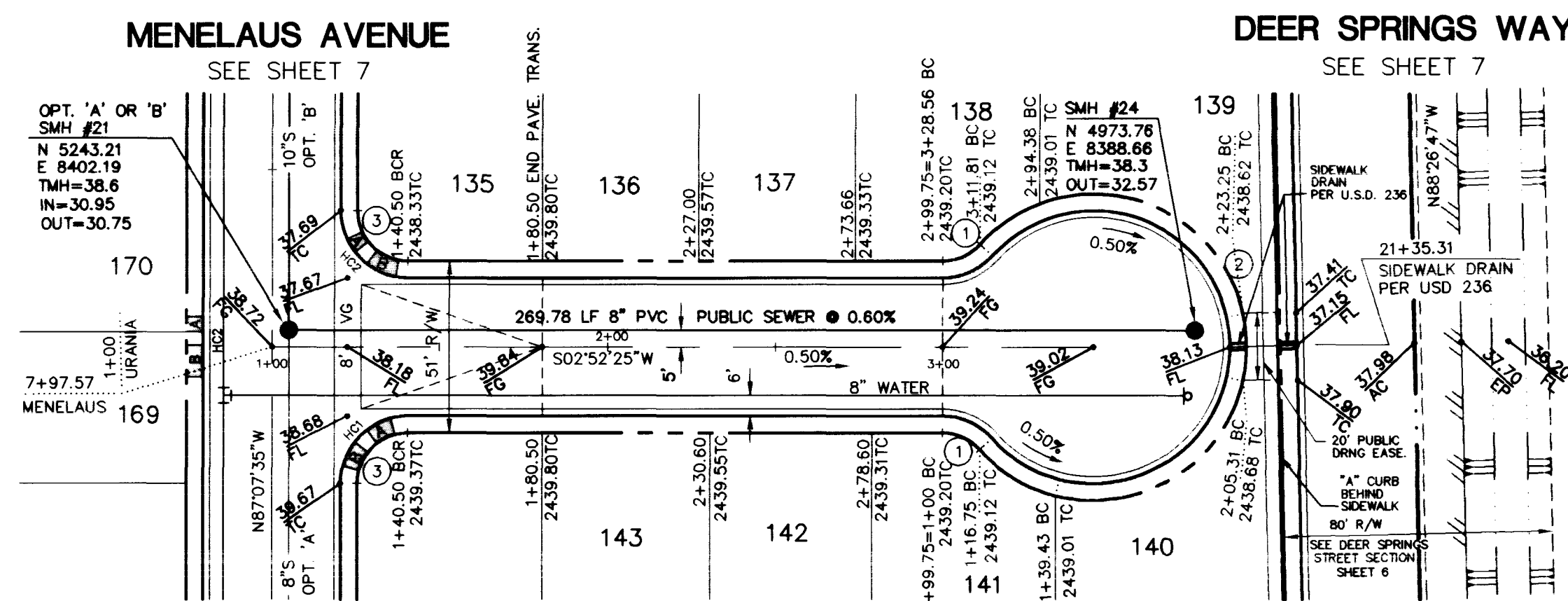
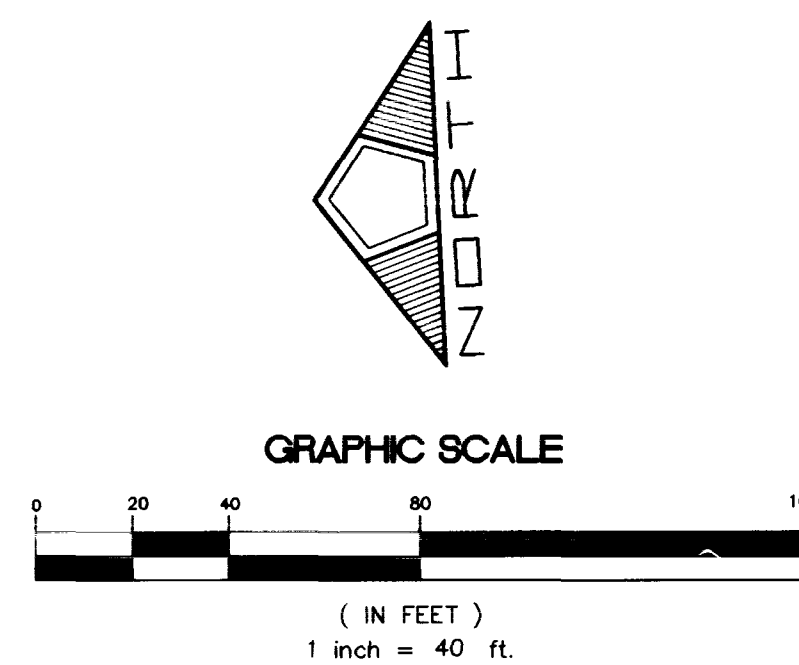
HC RAMP DATA

HC RAMP #	GRADE (%)	"A" (FT) "B" TO "A"	"B" (FT) MIN.
1	-2 TO 2	8	8
2	-3 TO -2.01	4.5	9.5
3	3.01 TO 4	12	4.5

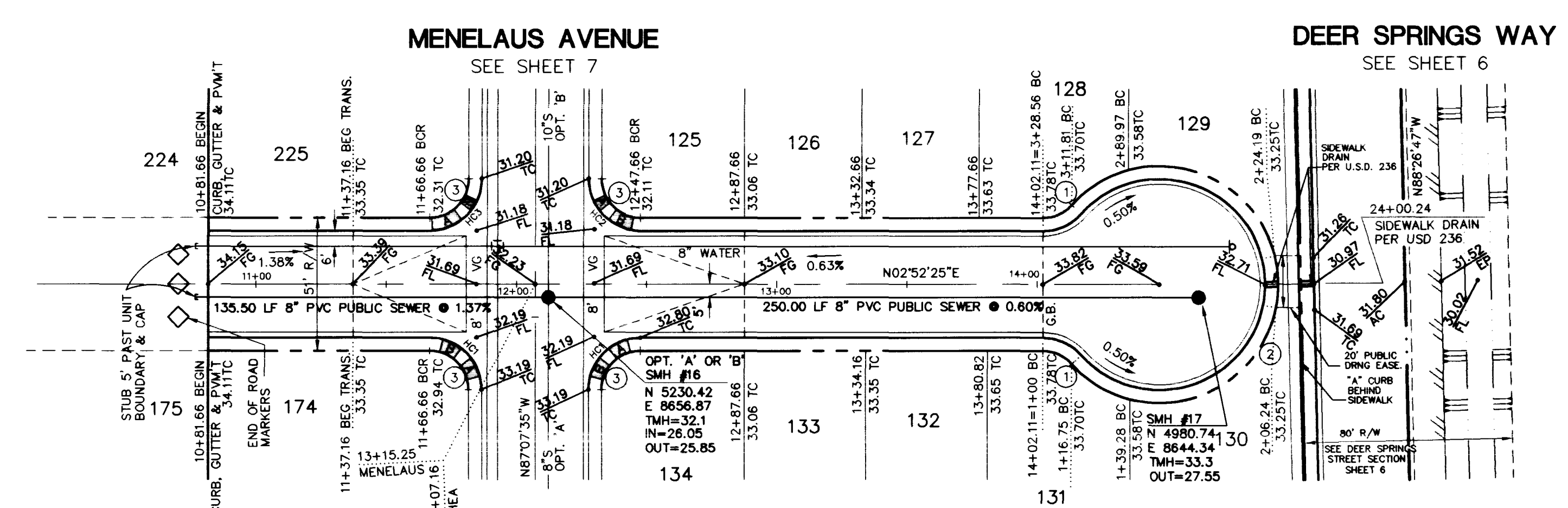
(STD. DWG. NO. 235, CASE 1)

TOTAL BACK OF CURB CURVE DATA

CURVE	DELTA	RADIUS	LENGTH	TANGENT
1	47°58'39"	20.00'	16.75'	8.90'
2	27°57'18"	40.50'	195.06'	36.50'
3	90°00'00"	20.00'	31.42'	20.00'



### URANIA COURT (PUBLIC)



### RHEA STREET (PUBLIC)

DATE: 9/1/97  
 DRAWN BY: J. HIRSHOEDER  
 DESIGNED BY: J. HIRSHOEDER  
 CHECKED BY: J. HIRSHOEDER  
 JOB NO.: 0141.0006  
 SCALE: 1" = 40'

STATE OF NEVADA  
 CIVIL ENGINEER  
 JENNIFER BRODZINSKY  
 No. 8000  
 10/11/97

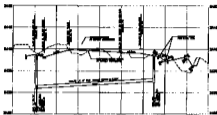
NO. DESCRIPTION  
 DATE  
 APRD

**PENTACORE**  
 CIVIL ENGINEERING • LAND SURVEYING • PLANNING  
 CONSTRUCTION MANAGEMENT • ADA CONSULTING  
 6763 WEST CHARLESTON BOULEVARD  
 LAS VEGAS, NEVADA 89102 (702)258-0015

EXECUTIVE DEVELOPMENT CORPORATION  
 ELKHORN - CIMARRON ESTATES UNIT 4A  
 STREET PLAN - PROFILE  
 URANIA COURT AND RHEA STREET

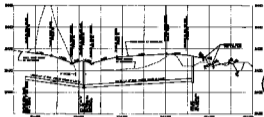
6030

107Y-449B-4A



URANIA COURT (PUBLIC)

PROFILES  
ROAD 200' F = 2"



RHEA STREET (PUBLIC)

PROFILES  
ROAD 200' F = 2"



**REMARKS**  
 SEE PLAN SHEET FOR  
 DETAILS OF THE LAYOUT OF THE DEVELOPMENT.  
 THIS PLAN IS FOR THE DEVELOPMENT OF  
 THE PROPERTY SHOWN ON THE PLAN.

STATION	ELEVATION	REMARKS
0+00	100.00	START OF ROAD
1+00	105.00	DIP
2+00	110.00	FLAT
3+00	115.00	FLAT
4+00	120.00	END OF ROAD



URANIA COURT (PUBLIC)

STATION	ELEVATION	REMARKS
0+00	100.00	START OF ROAD
1+00	105.00	DIP
2+00	110.00	FLAT
3+00	115.00	FLAT
4+00	120.00	END OF ROAD



RHEA STREET (PUBLIC)

**PENTACORE**  
 ENGINEERING CORPORATION  
 1000 PENTACORE DRIVE  
 SUITE 100  
 WASHINGTON, D.C. 20004  
 (202) 462-1000

0