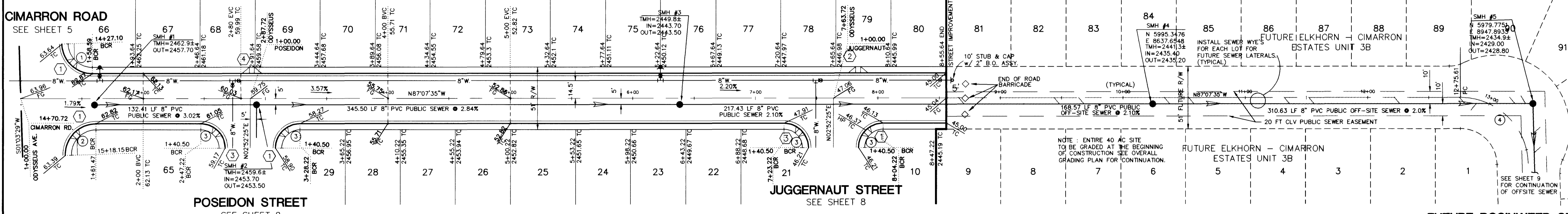
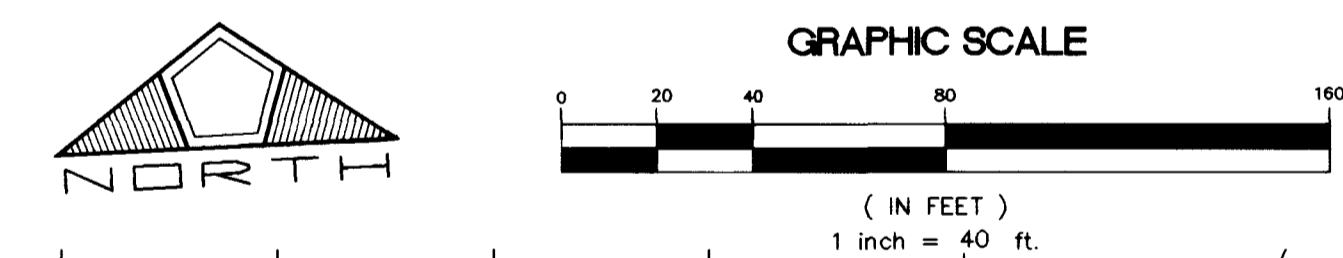


ODYSSEUS AVENUE (PUBLIC)

PROFILE
SCALE: HORIZ. 1" = 40'
VERT. 1" = 4'



SIDEWALK RAMP TRANSITION TABLE

RAMP NO.	GRADE (%) "B" TO "A"	"A" (FT) MIN.	"B" (FT) MIN.
1	-2 TO 2	8.0	8.0
2	2.01 TO 3	9.5	4.5
3	-6 TO -5.01	4.5	21.5
4	3.01 TO 4	12.0	4.5

U.S.D. STD. D.W.G. NO. 235
CASE I

BACK OF CURB CURVE DATA

CURVE	DELTA	RADIUS	LENGTH	TANGENT
1	88°11'04"	25.00'	38.48'	24.22'
2	91°48'56"	25.00'	40.06'	25.81'
3	90°00'00"	20.00'	31.42'	20.00'

CENTERLINE CURVE DATA

CURVE	DELTA	RADIUS	LENGTH	TANGENT
4	88°32'21"	55.50'	85.76'	54.10'

BENCHMARK

CLV BM = 1 LV90 21 MG
3" BRASS CAP USC & GS BM #113, 3/4 MILE N OF 1 LV90288NNE6,
50' E OF OLD RAILROAD BED.
ELEV. = 748.2684 (METERS) 2454.97 (NAVD88)

DATE: 9/26/97
DRAWN BY: [Signature]
DESIGNED BY: [Signature]
CHECKED BY: [Signature]
JOB NO.: 0222.0010
SCALE: 1" = 40'

PENTACORE
CIVIL ENGINEERING • LAND SURVEYING • PLANNING
CONSTRUCTION MANAGEMENT • ADA CONSULTING
6763 WEST CHARLESTON BOULEVARD
LAS VEGAS, NEVADA 89102 (702)258-0115

EXECUTIVE DEVELOPMENT CORPORATION
ELKHORN - CIMARRON ESTATES UNIT 3A
STREET PLAN - PROFILE
ODYSSEUS AVENUE

SHEET **6**
OF 13

DATE APP'D: [Signature]

G:\0222\0010\UNIT3A\PR\ODYSSEUS.Mxd Oct 20 11:14:26 1997 J. HIRSHOEFER

6048

107Y-4498-3A

