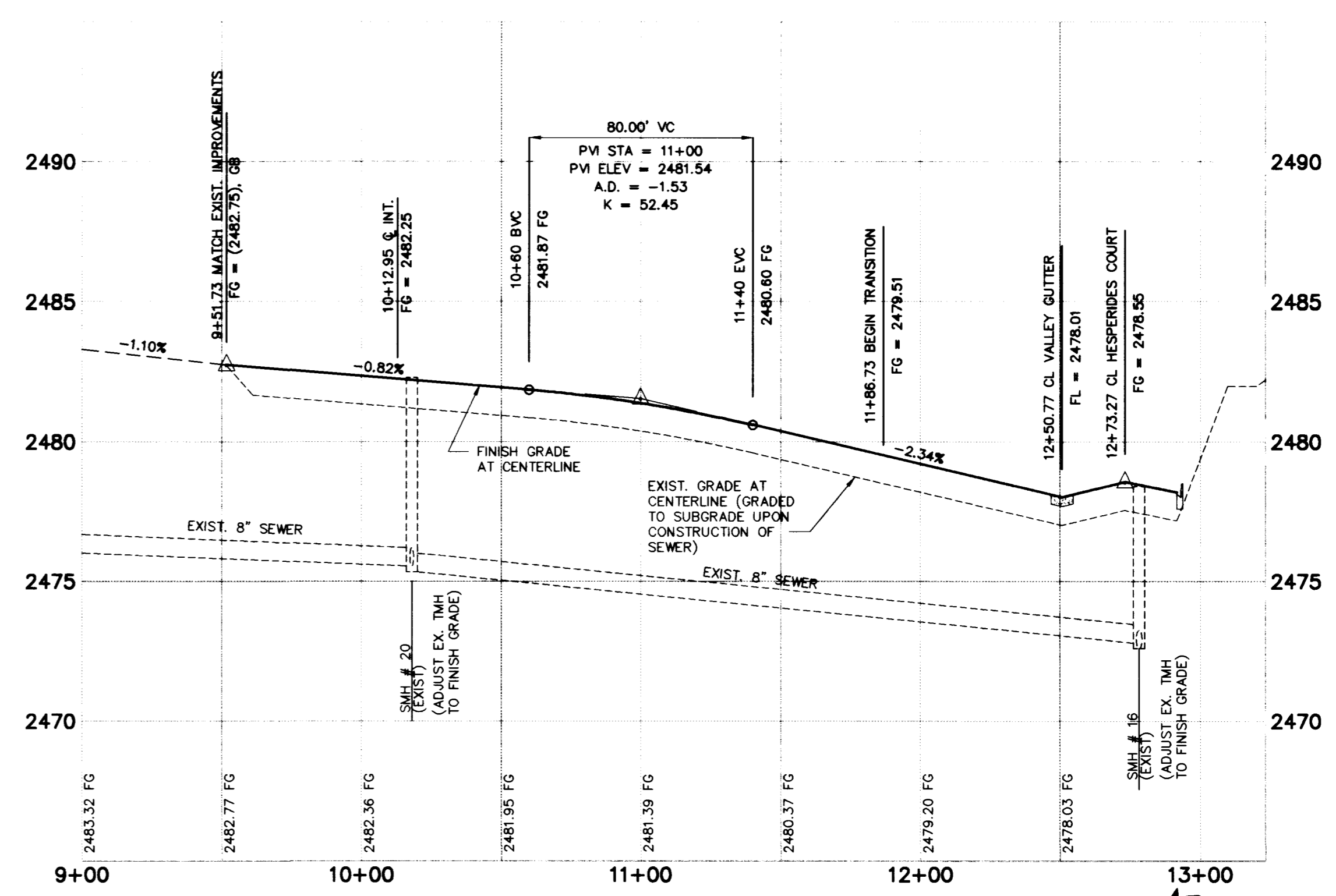
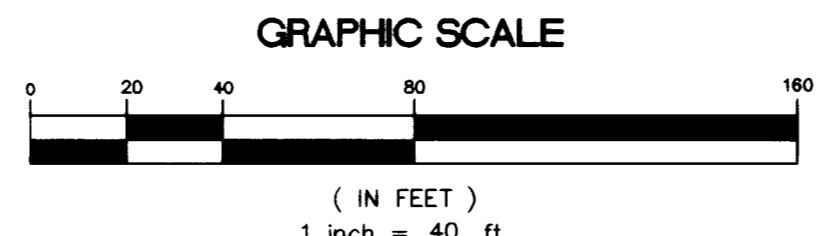


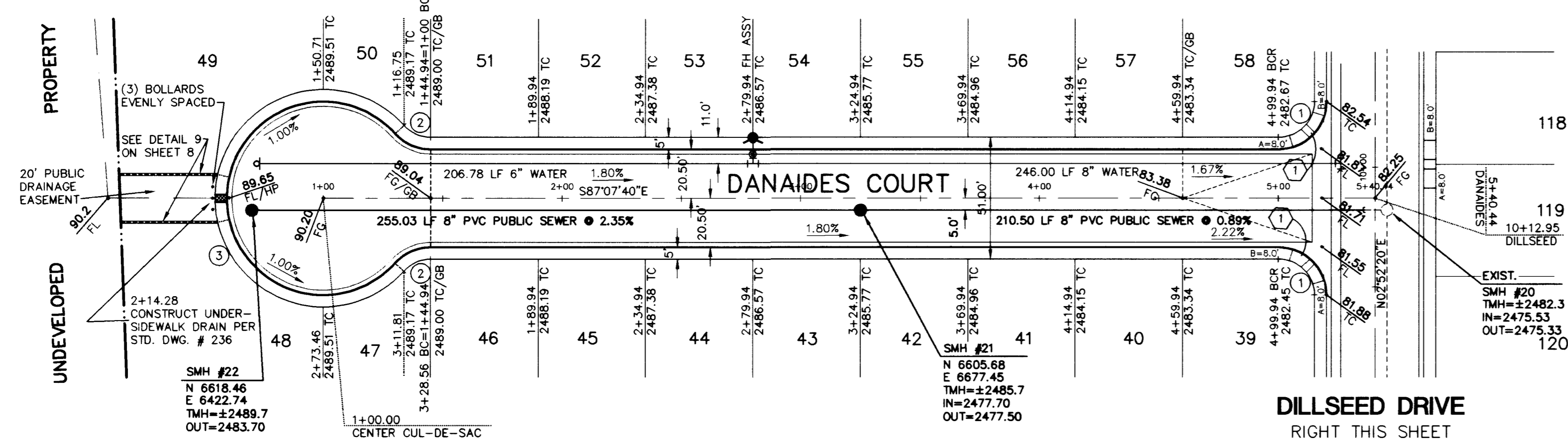
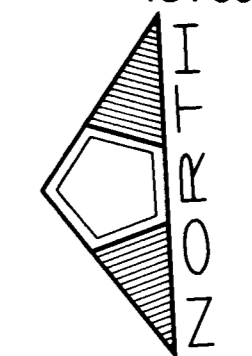
**DANAIDES COURT (PUBLIC)**

**PROFILE**  
SCALE: HORIZ. 1" = 40'  
VERT. 1" = 4'



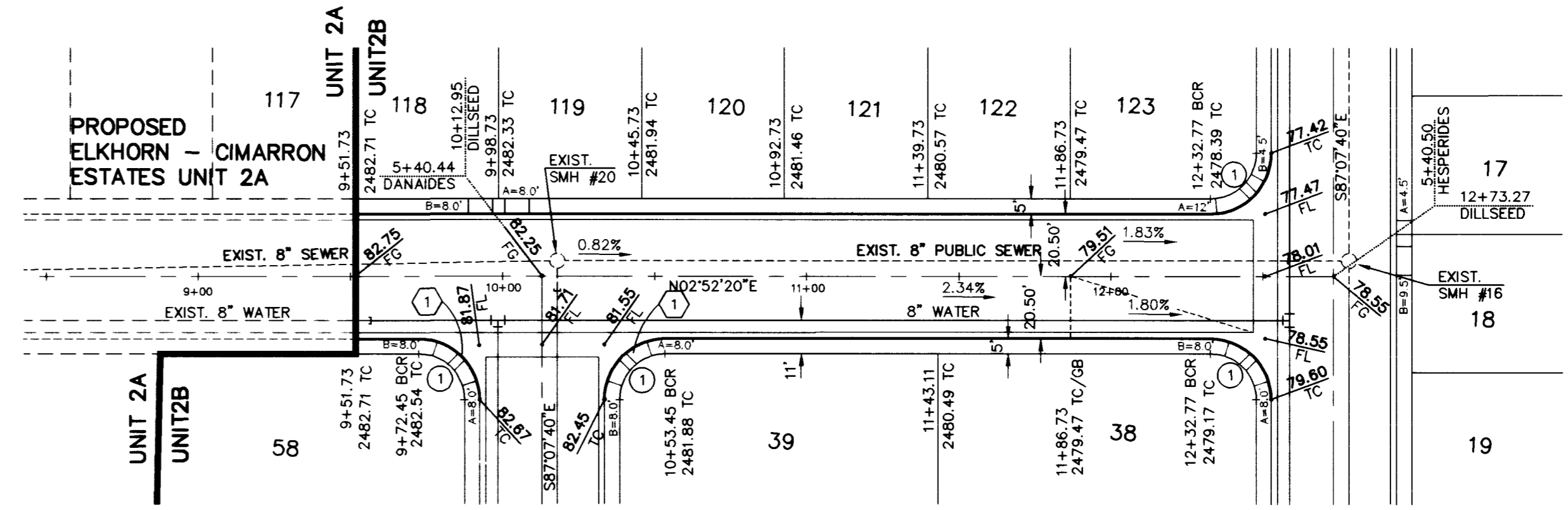
**DILLSEED DRIVE (PUBLIC)**

**PROFILE**  
SCALE: HORIZ. 1" = 40'  
VERT. 1" = 4'



**DANAIDES COURT (PUBLIC)**

**DILLSEED DRIVE**  
RIGHT THIS SHEET



**DANAIDES COURT**  
LEFT THIS SHEET

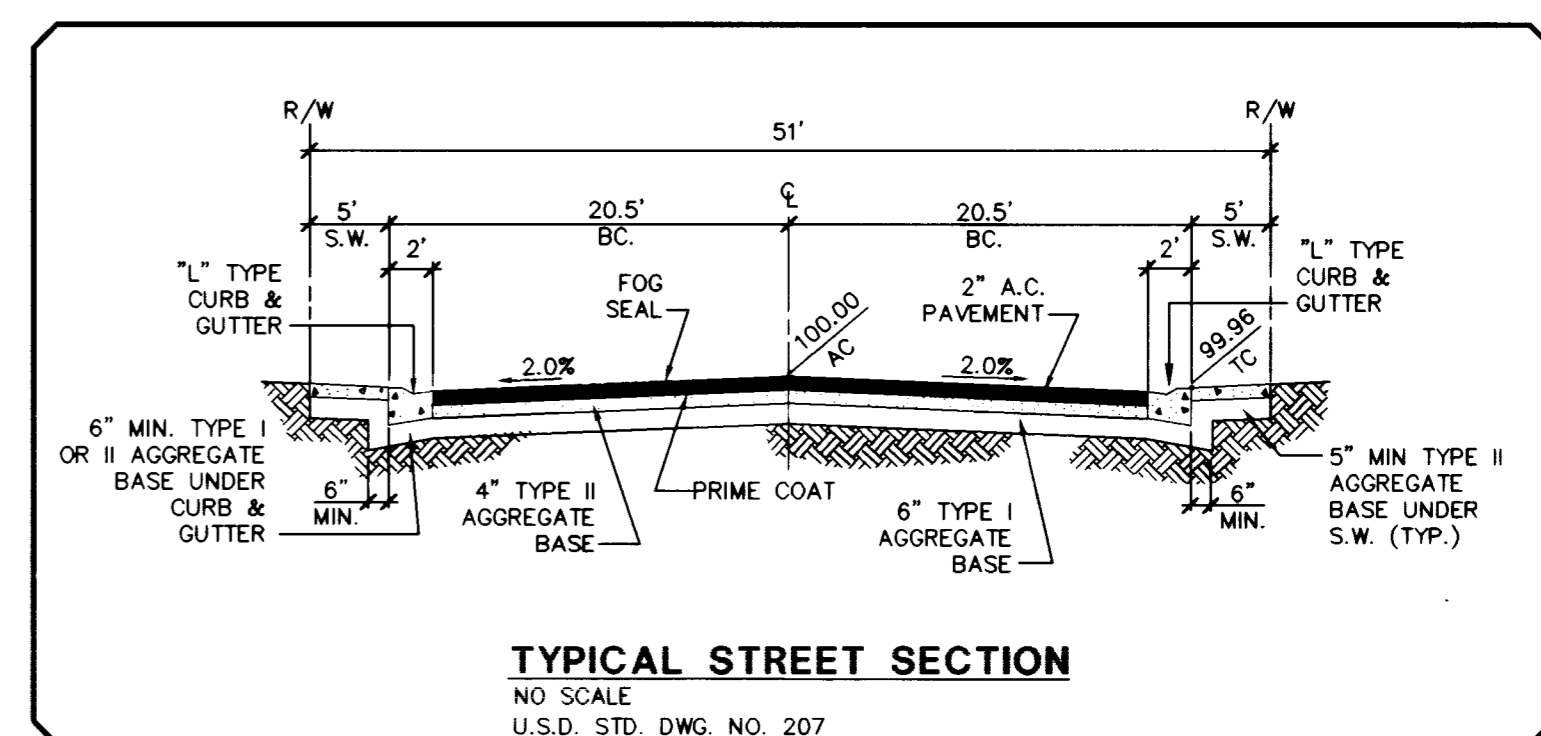
**HESPERIDES AVENUE**  
SEE SHEET NO. 5

BACK OF CURB CURVE TABLE

CURVE	DELTA	RADIUS	LENGTH	TANGENT
1	90°00'00"	20.00'	31.42'	20.00'
2	47°58'39"	20.00'	16.75'	8.90'
3	275°57'18"	40.50'	195.06'	36.50'

**SEWER CONNECTION NOTE:**  
ONE OR MORE SEGMENTS OF THE DOWNSTREAM SEWER SYSTEM THAT WILL SERVE THIS PROJECT HAS NOT BEEN COMPLETED AND/OR ACCEPTED FOR MAINTENANCE BY THE CITY OF LAS VEGAS. ANY WORK DONE ON THIS PROJECT PRIOR TO THE COMPLETION AND/OR ACCEPTANCE OF THE DOWNSTREAM SEWER SYSTEM(S) SHALL BE DONE AT THE DEVELOPER'S OWN RISK. THE CITY OF LAS VEGAS RESERVES THE RIGHT TO PREVENT THE PHYSICAL CONNECTION OF THIS PROJECT INTO THE DOWNSTREAM SEWER SYSTEM UNTIL ALL SEGMENTS HAVE BEEN COMPLETED AND ACCEPTED FOR MAINTENANCE, OR UNTIL SUCH TIME AS THEY ARE DEEMED AVAILABLE FOR SERVICE.

**BENCHMARK**  
CLV BM # 1 LV90 21 N6  
3" BRASS CAP USC & GS BM #113, 3/4 MILE N OF 1 LV9028NNE6,  
50' E OF OLD RAILROAD BED.  
ELEV. = 748.2584 (METERS) 2454.91' (NAVD88)



NO. DESCRIPTION DATE / APPD

RECOMMENDED BY: *[Signature]* DATE: 6/3/17

DESIGNED BY: LENIARD GRODZINSKY P. E. # 8260

CHECKED BY: O'HANLON JOB NO.: 0141.0006

SCALE: 1" = 40'

**PENTACORE**  
CIVIL ENGINEERS - LAND SURVEYING - PLANNING  
CONSTRUCTION MANAGEMENT - ADA CONSULTING  
6763 WEST CHARLESTON BOULEVARD  
LAS VEGAS, NEVADA 89102 (702)258-0115

EXECUTIVE DEVELOPMENT CORPORATION  
ELKHORN - CIMARRON ESTATES UNIT 2B  
STREET PLAN - PROFILE  
DANAIDES COURT AND DILLSEED DRIVE

SHEET **6** OF 8

