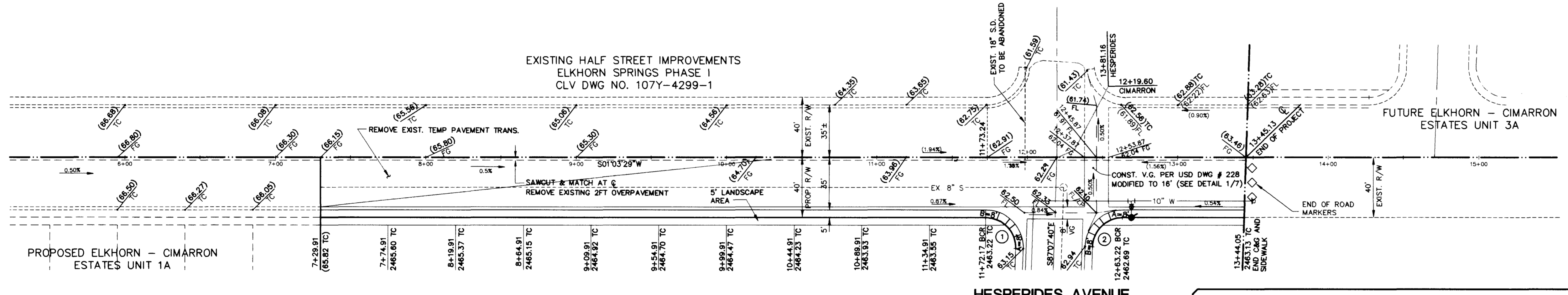
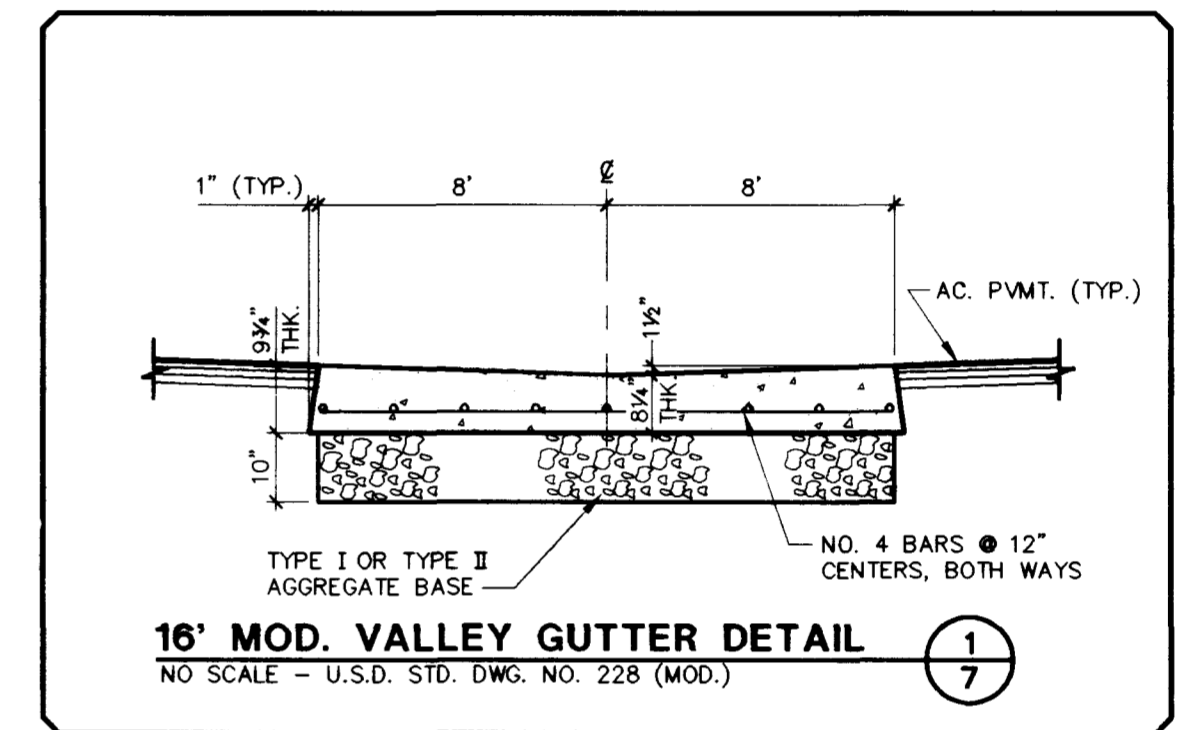


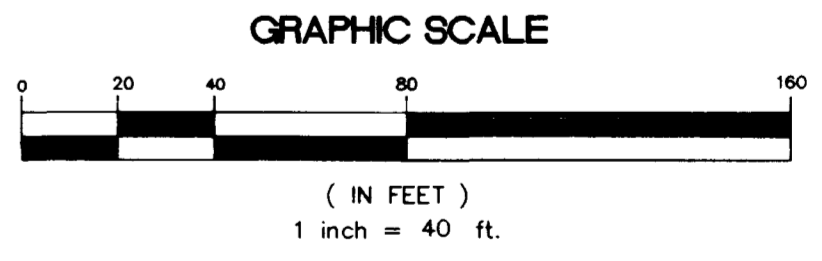
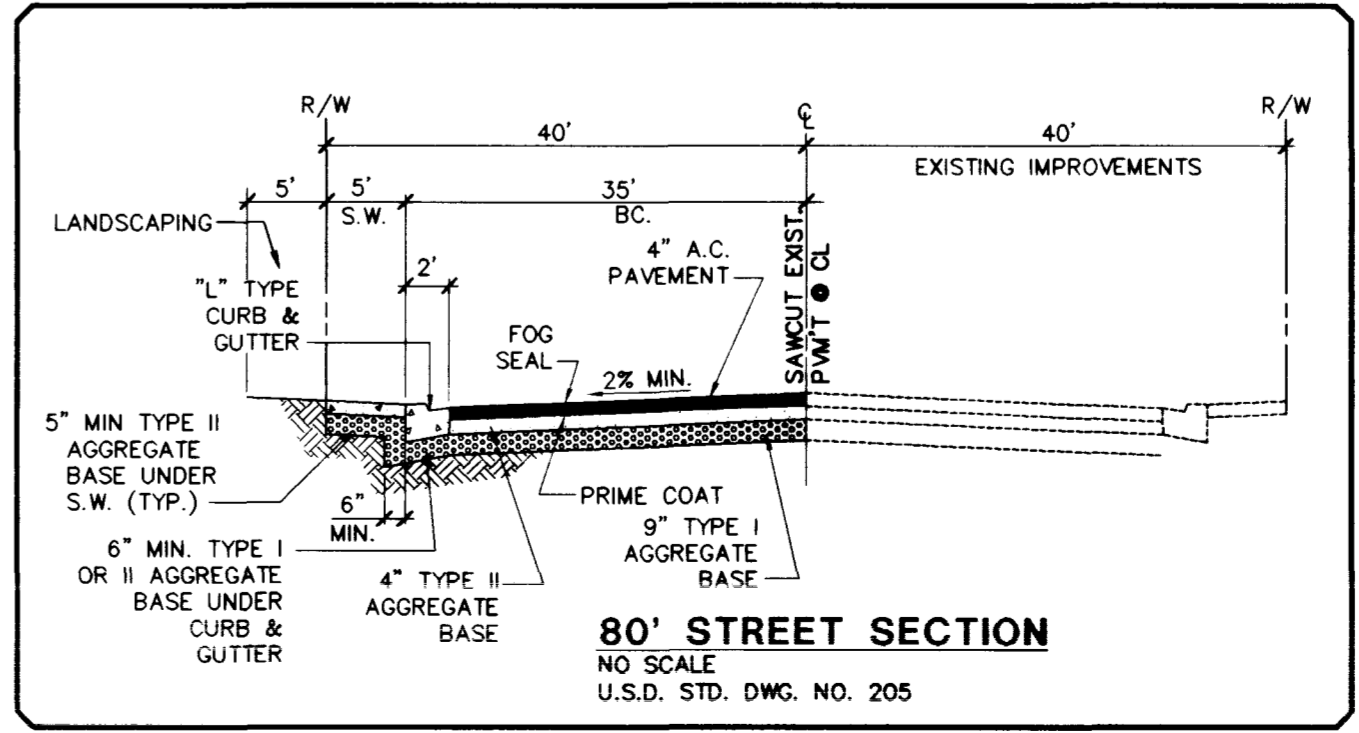
CIMARRON ROAD (PUBLIC)

PROFILE
 SCALE: HORIZ. 1" = 40'
 VERT. 1" = 4'



CIMARRON ROAD (PUBLIC)

BENCHMARK
 CLV BM # 1 LV90 21 N6
 3" BRASS CAP USC & GS BM #13, 3/4 MILE N OF 1 LV9028NNE6,
 50' E OF OLD RAILROAD BED.
 ELEV. = 748.2584 (METERS) 2454.91' (NAVD88)



BACK OF CURB CURVE DATA

CURVE	DELTA	RADIUS	LENGTH	TANGENT
1	91°48'52"	25.00'	40.06'	25.80'
2	88°11'08"	25.00'	38.48'	24.22'

PENTACORE <small>CIVIL ENGINEERING - LAND SURVEYING - PLANNING CONSTRUCTION MANAGEMENT - ADA CONSULTING 6763 WEST CHARLESTON BOULEVARD LAS VEGAS, NEVADA 89102 (702)258-0115</small>	DATE: 7/3/97 DRAWN BY: [Signature] DESIGNED BY: [Signature] CHECKED BY: [Signature] JOB NO.: 0141.0008 SCALE: 1" = 40' NO. DESCRIPTION DATE APPD
EXECUTIVE DEVELOPMENT CORPORATION ELKHORN - CIMARRON ESTATES UNIT 1B STREET PLAN - PROFILE CIMARRON ROAD	SHEET <div style="font-size: 2em; font-weight: bold; text-align: center;">7</div> OF 10

G:\0141\0008\UNIT1B\PP\CT\CIMARRON Thu Jul 3 08:48:08 1997 J. HIRSHOWER

CIMARRON.DWG DISK # 0141\0008\UNIT1B\APP\

107Y-4498-1B

