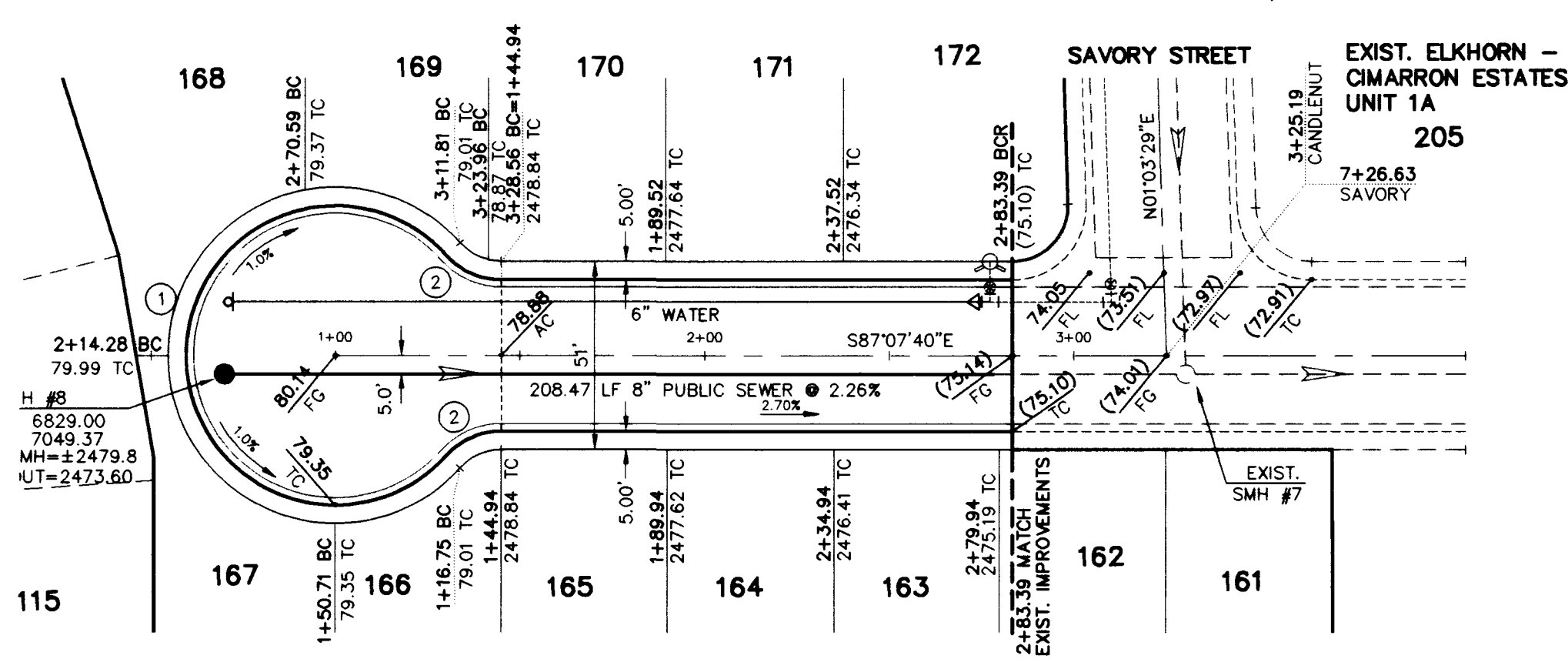
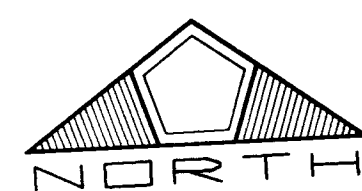


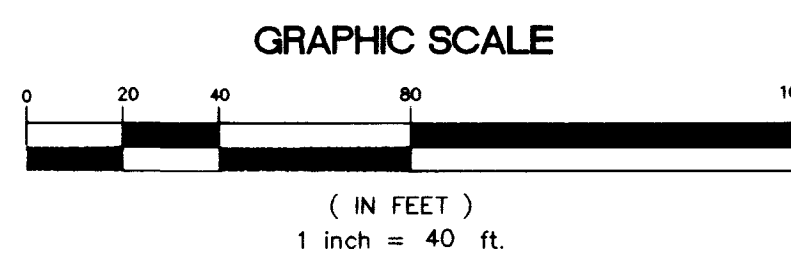
**CANDLENUT AVENUE (PUBLIC)**

**PROFILE**

SCALE: HORIZ. 1" = 40'  
VERT. 1" = 4'



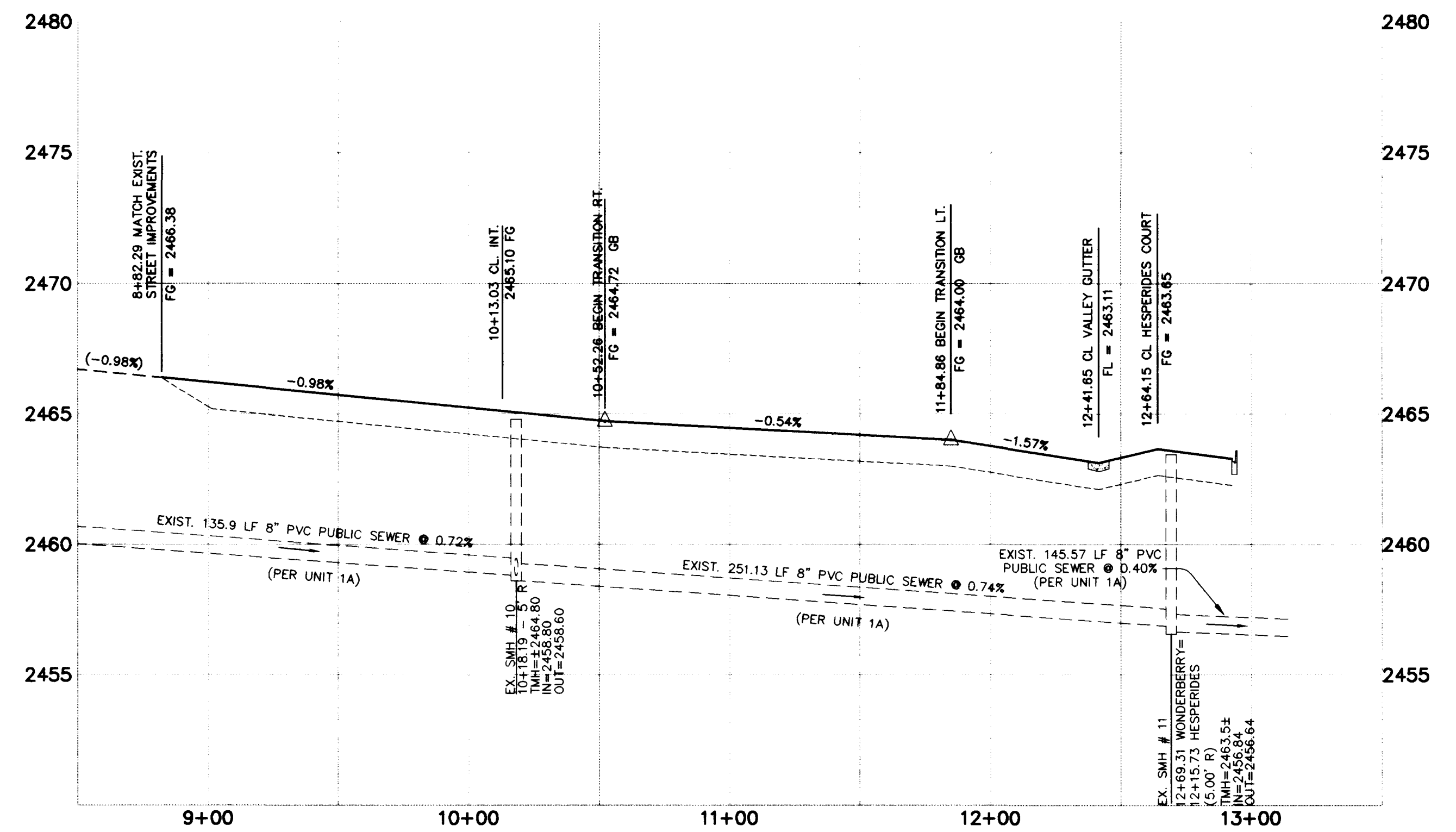
**CANDLENUT AVENUE (PUBLIC)**



**BACK OF CURB CURVE DATA**

CURVE	DELTA	RADIUS	LENGTH	TANGENT
1	275°57'18"	40.50'	195.06'	36.50'
2	47°58'39"	20.00'	16.75'	8.90'
3	88°11'08"	20.00'	30.78'	19.38'
4	91°48'52"	20.00'	32.05'	20.64'

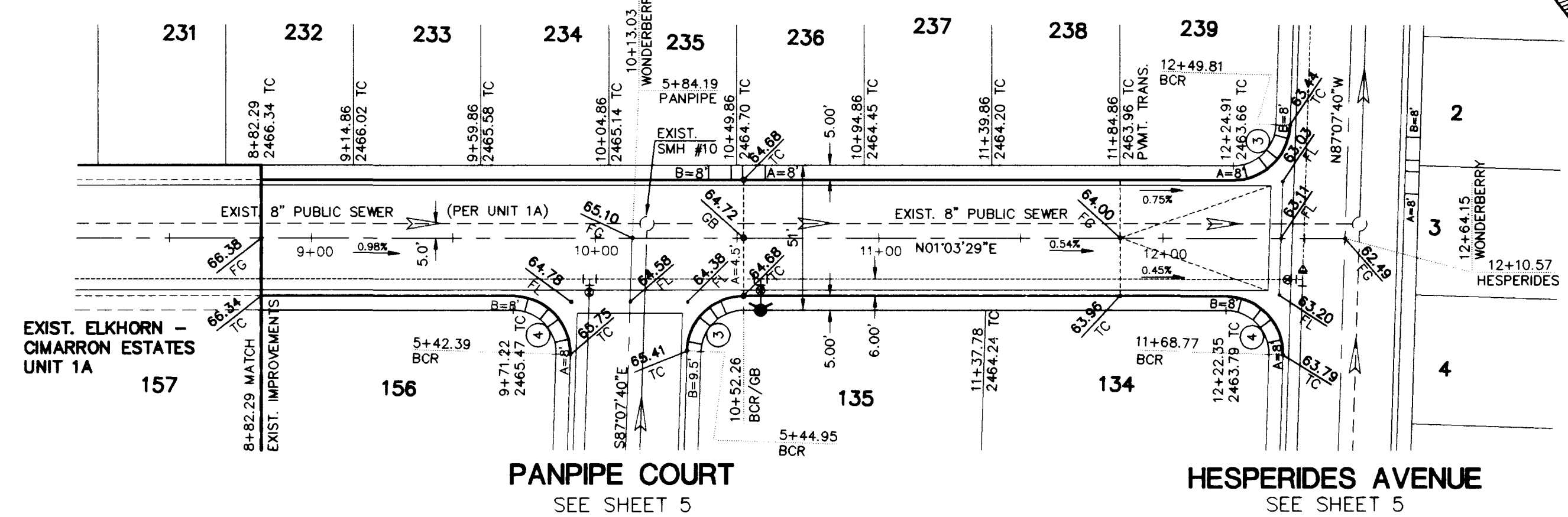
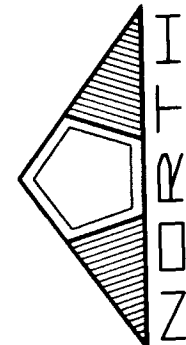
**BENCHMARK**  
CLV BM #1 LV90 21 N6  
3" BRASS CAP USC & GS BM #113, 3/4 MILE N OF 1 LV9028NNE6,  
50' E OF OLD RAILROAD RD.  
ELEV. = 748.2584 (METERS) 2454.91' (NAVD88)



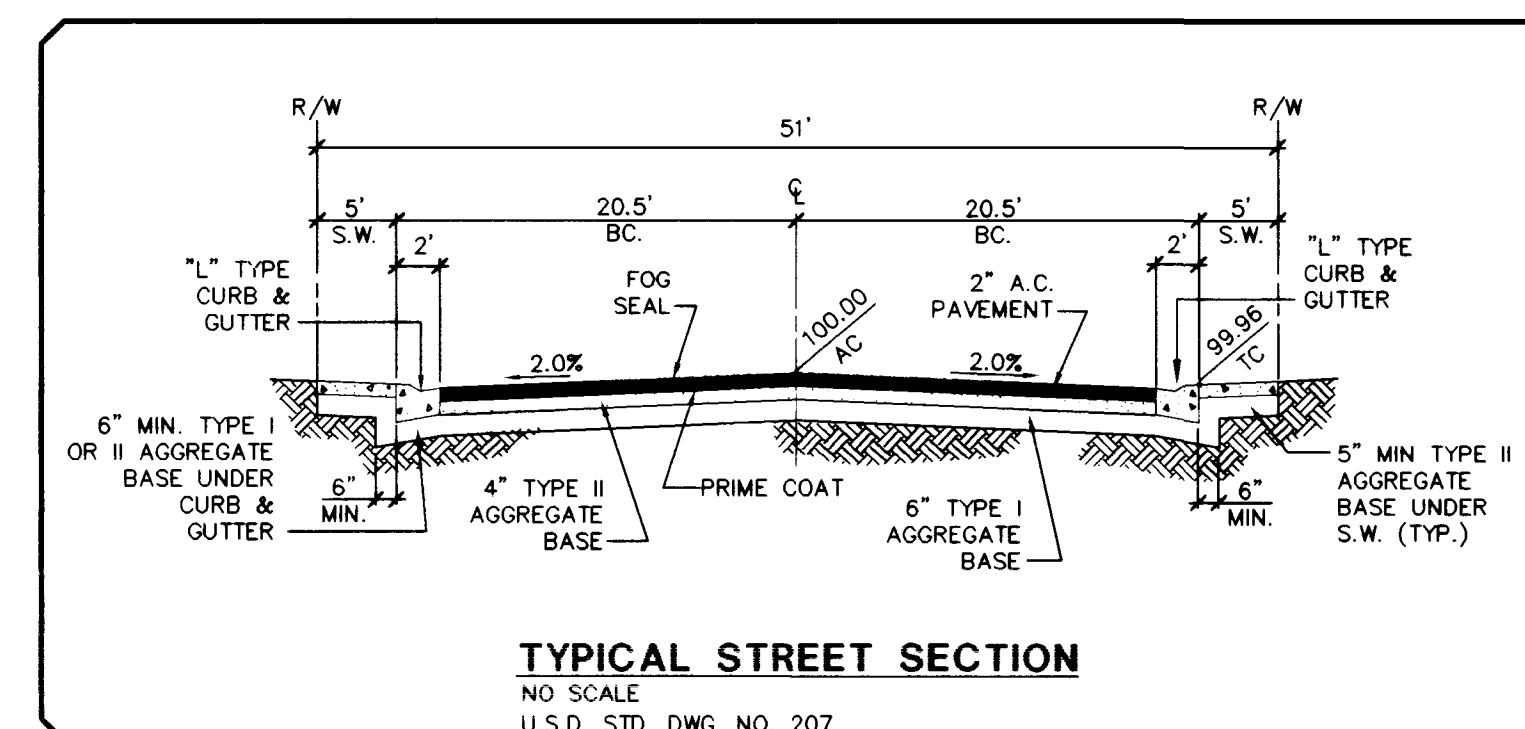
**WONDERBERRY STREET (PUBLIC)**

**PROFILE**

SCALE: HORIZ. 1" = 40'  
VERT. 1" = 4'



**WONDERBERRY STREET (PUBLIC)**



**TYPICAL STREET SECTION**

NO SCALE  
U.S.D. STD. DWG. NO. 207

0:\0141\0006\UNIT1B\PP\CANDLENUT Web.dwg 2:13:09-40 1997 J. HIRSCHDORFER

CANDLENUT.DWG DSK # 0141\0006\UNIT1B.VPP

NO.	DESCRIPTION	DATE	APP'D

RECOMMENDED  
*L. G. G. G.*  
LENNARD GRIGZINSKY  
P. E. # 8200  
DATE: 7/2/97

DATE: 7/2/97  
DRAWN BY:  
DESIGNED BY:  
CHECKED BY:  
JOB NO.: 0141.0006  
SCALE: 1" = 40'

**PENTACORE**  
CIVIL ENGINEERING • LAND SURVEYING • PLANNING  
CONSTRUCTION MANAGEMENT • ADVERTISING  
LAS VEGAS, NEVADA 89102 (702)258-0115



EXECUTIVE DEVELOPMENT CORPORATION  
ELKHORN - CIMARRON ESTATES UNIT 1B  
STREET PLAN - PROFILE  
CANDLENUT AVENUE AND WONDERBERRY STREET

SHEET  
**6**  
OF 10

107Y-4498-1B

