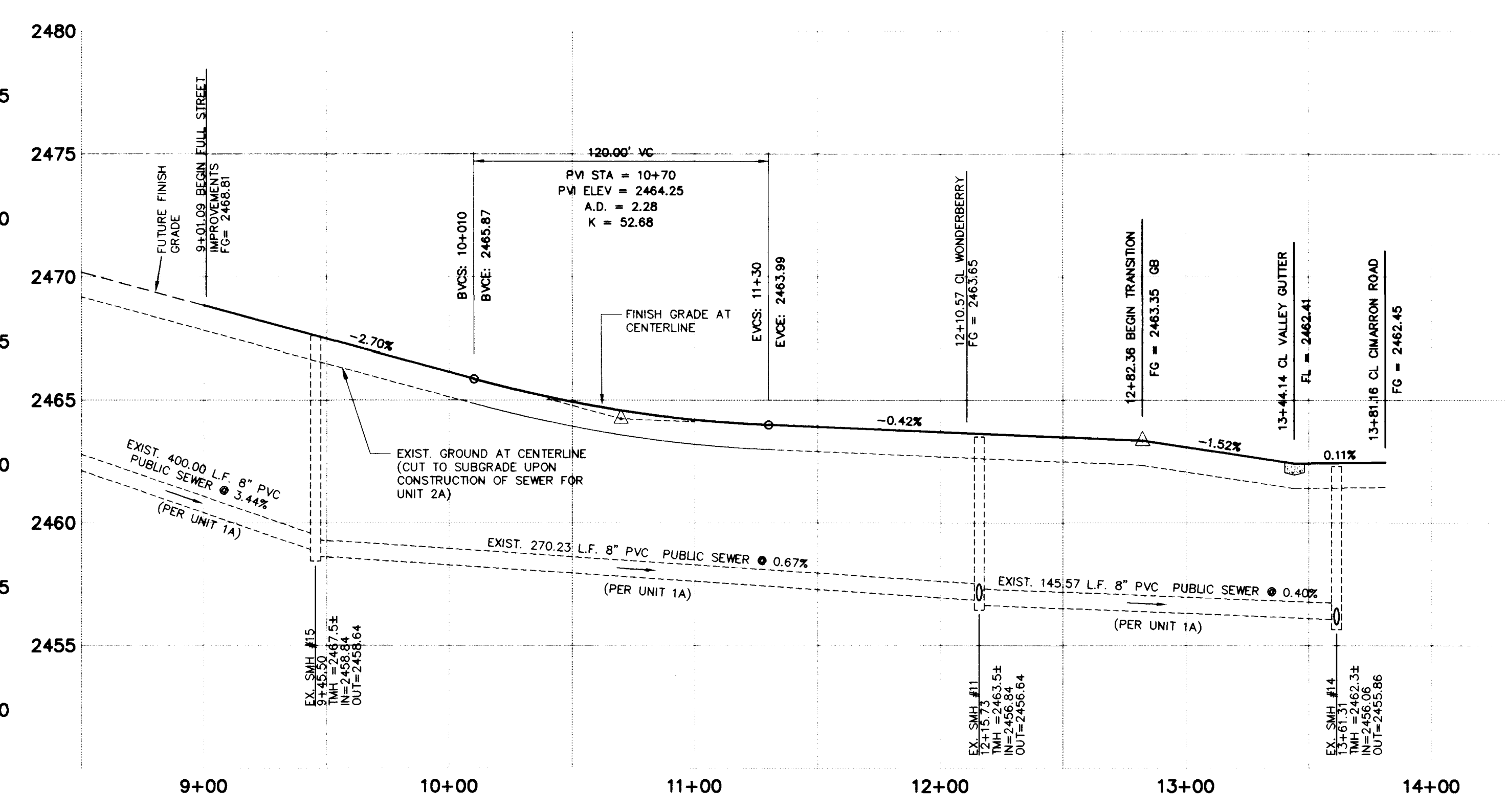


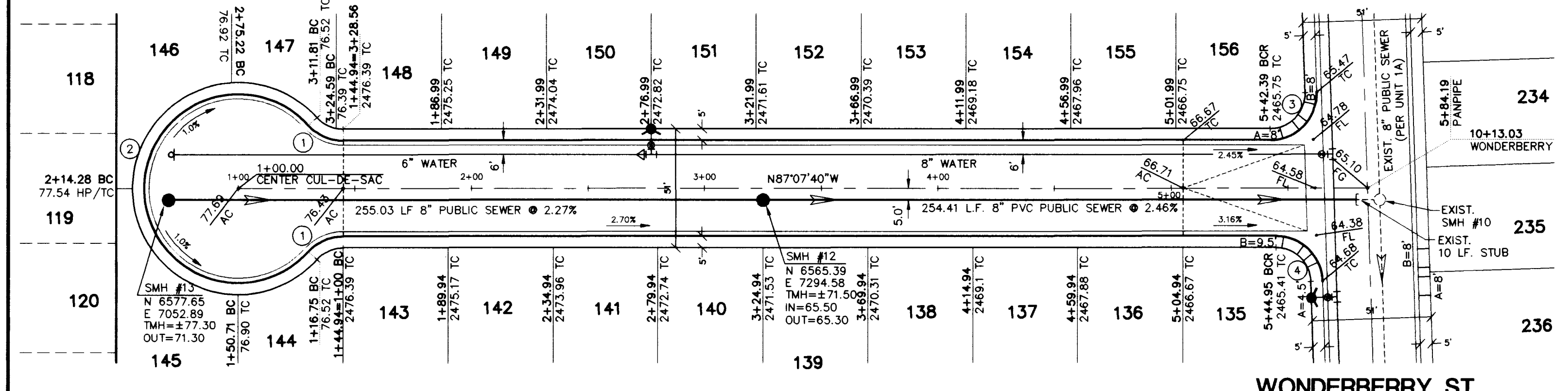
PANPIPE COURT (PUBLIC)

PROFILE
SCALE: HORIZ. 1" = 40'
VERT. 1" = 4'

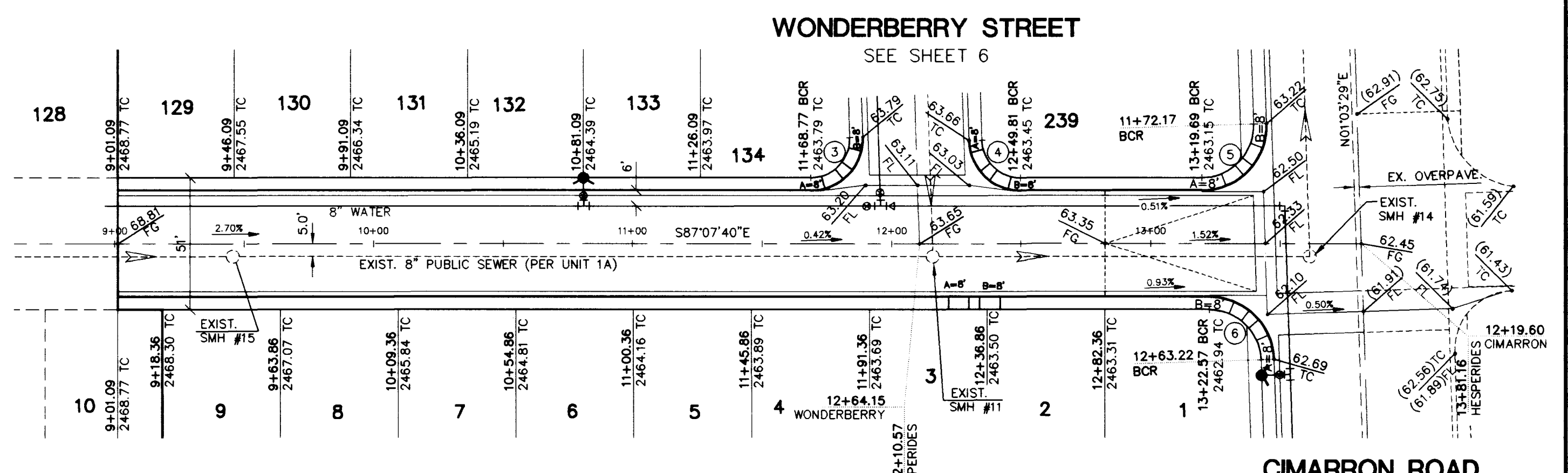


HESPERIDES AVENUE (PUBLIC)

PROFILE
SCALE: HORIZ. 1" = 40'
VERT. 1" = 4'



PANPIPE COURT (PUBLIC)

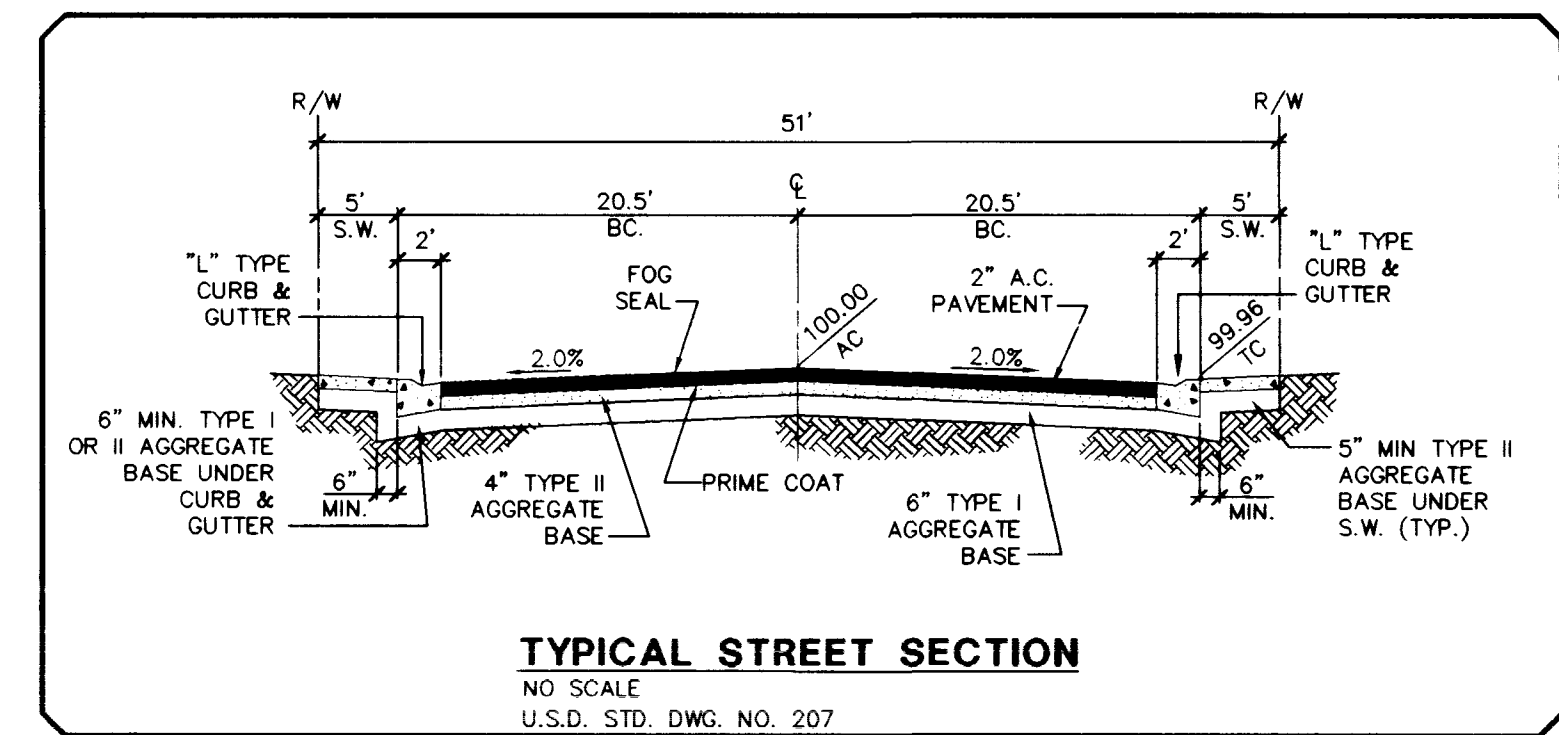
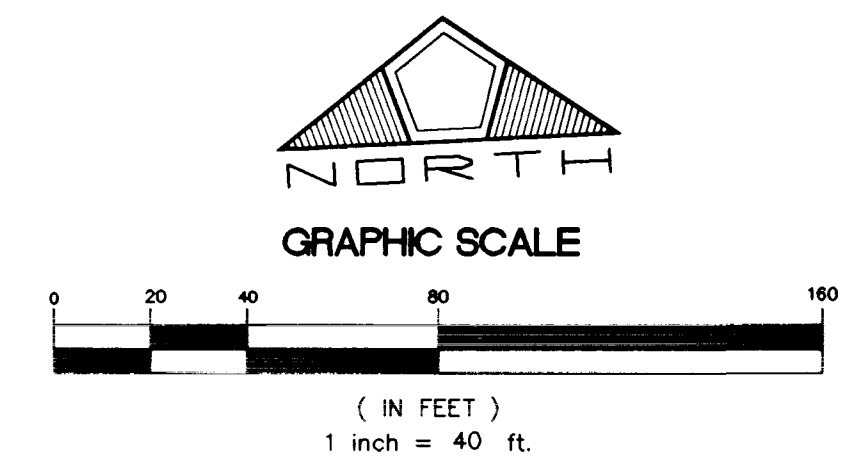


HESPERIDES AVENUE (PUBLIC)

BENCHMARK
CLV BM #1 LV90 21 N6
3" BRASS CAP USE & 55 BM #113, 3/4 MILE N OF 1 LV9028NNE6,
50' E OF OLD RAILROAD BED.
ELEV. = 748.2584 (METERS) 2454.91' (NAVD88)

BACK OF CURB CURVE DATA

CURVE	DELTA	RADIUS	LENGTH	TANGENT
1	47°58'39"	20.00'	16.75'	8.90'
2	27°57'18"	40.50'	195.06'	36.50'
3	91°48'52"	20.00'	32.05'	20.64'
4	88°11'08"	20.00'	30.78'	19.38'
5	91°48'52"	25.00'	40.06'	25.80'
6	88°11'08"	25.00'	38.48'	24.22'

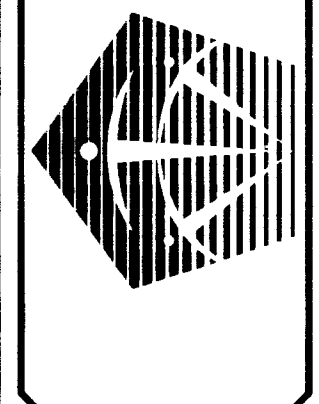


NO.	DESCRIPTION	DATE	APP'D

RECOMMENDED BY: *[Signature]*
LENNARD GROSZINSKI
P. E. # 8200

DATE: 7/3/97
DRAWN BY: *[Signature]*
DESIGNED BY: *[Signature]*
CHECKED BY: *[Signature]*
JOB NO.: 0141.0006
SCALE: 1" = 40'

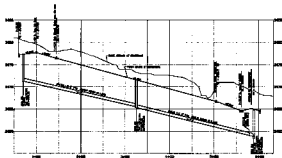
PENTACORE
CIVIL ENGINEERING • LAND SURVEYING • PLANNING
CONSTRUCTION MANAGEMENT • ADA CONSULTING
600 S. GARDEN AVENUE, SUITE 100
LAS VEGAS, NEVADA 89102 (702)258-0115



EXECUTIVE DEVELOPMENT CORPORATION
ELKHORN - CIMARRON ESTATES UNIT 1B

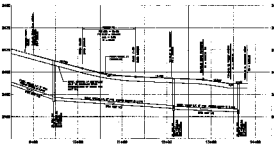
STREET PLAN - PROFILE
PANPIPE COURT AND HESPERIDES AVENUE

SHEET
5
OF 10



PANPIPE COURT (PUBLIC)

SECTORS
 HORIZ. DIST. 100' ±
 VERT. DIST. 10' ±



HESPERIDES AVENUE (PUBLIC)

SECTORS
 HORIZ. DIST. 100' ±
 VERT. DIST. 10' ±



PANPIPE COURT (PUBLIC)

WINESBURY ST.
 SEE SHEET 4



HESPERIDES AVENUE (PUBLIC)

OAKWOOD ROAD
 SEE SHEET 7

REMARKS:
 SEE SHEET 4 FOR
 EXISTING UTILITIES

NO.	DESCRIPTION	DATE
1	DESIGNED BY	
2	CHECKED BY	
3	DATE	



PENTACORE
 CIVIL ENGINEERING & ARCHITECTURE
 1000 S. 10th Street, Suite 100
 Lincoln, NE 68502
 (402) 441-1111
 www.pentacore.com

DESIGN DEVELOPMENT CONSULTING
 DESIGN - CONSTRUCTION ADMIN. BY
 EXIST. PLAN - PROFILE FRAME
 PENTACORE CIVIL ENGINEERING & ARCHITECTURE

5
 11/15