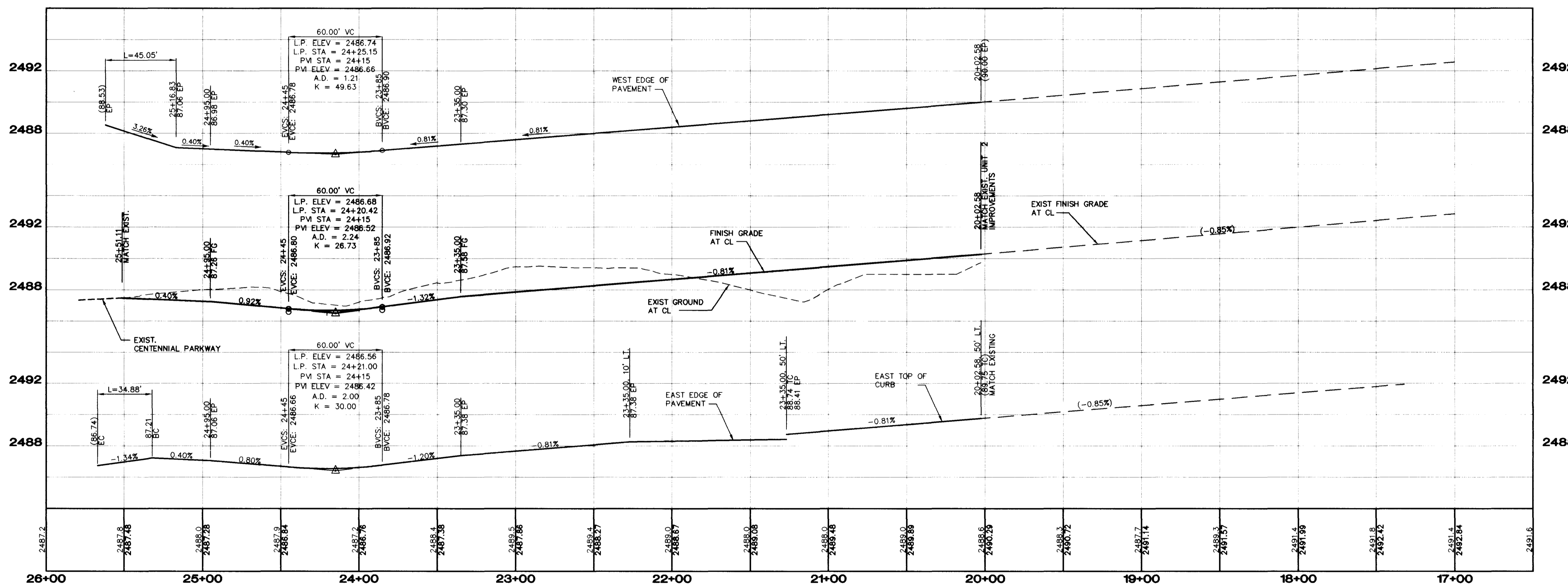
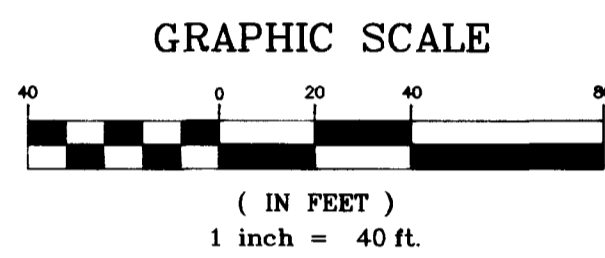


CENTENNIAL PARKWAY

DURANGO DRIVE



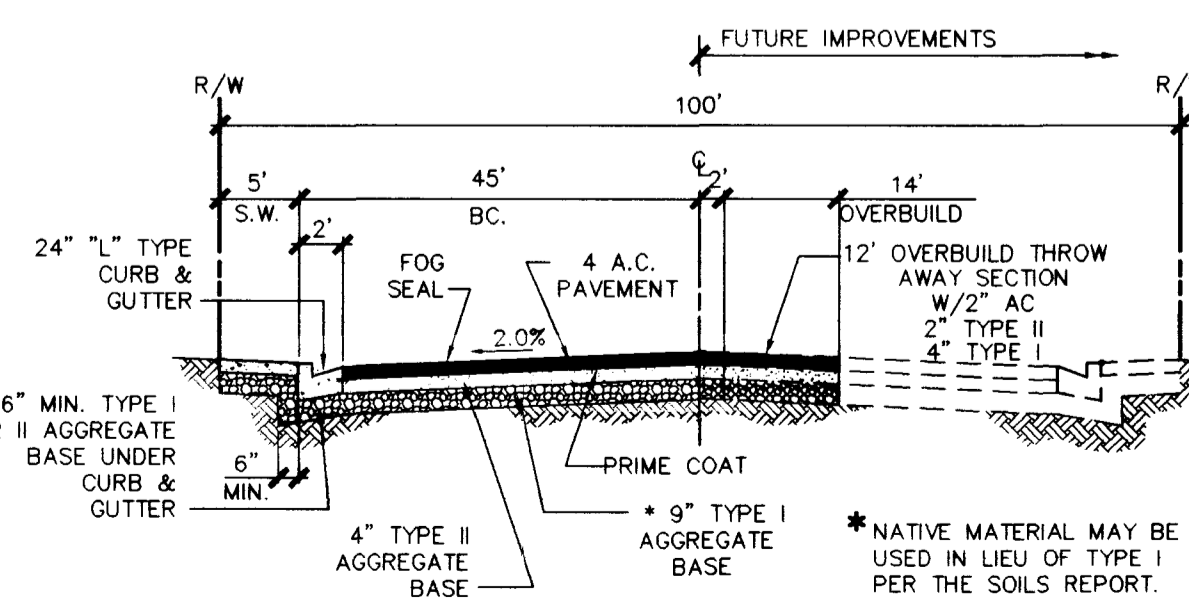
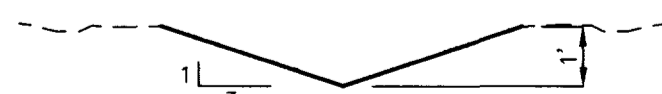
**BASIS OF BEARINGS**

SOUTH 88°55'31" WEST, BEING THE SOUTH LINE OF THE SOUTHWEST QUATER (SW 1/4) OF SECTION 21, T. 19 S., R. 80 E., M.D.N., CLARK COUNTY, NEVADA, COINCIDENT WITH THE CENTERLINE OF CENTENNIAL PARKWAY, AS SHOWN ON THAT CERTAIN MAP ON FILE IN THE OFFICE OF THE COUNTY RECORDER IN FILE 81 OF PARCEL MAPS AT PAGE 28.

**BENCHMARK**

CLARK COUNTY BM # 0C90 - 21NW6  
 RIVET AND SQUARE ALUMINUM PLATE IN TOP OF CENTER OF HEAD WALL ON THE WEST SIDE OF HIGHWAY - 95, NEAR MILE MARKER 88.95  
 ELEVATION = 764.787 METERS (NAVD'88)  
 ELEVATION = 2509.14 U.S. SURVEY FEET (NAVD'88)

**TEMPORARY EARTHEN "V" DITCH**  
NO SCALE



**TYPICAL STREET SECTION**  
NO SCALE

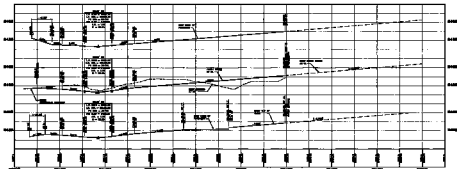
Avoid cutting underground utility lines. It's costly.

Avoid overhead power line contact  
**Call before you Dig**  
 before you Dig  
 1-702-593-6111 1-800-227-2600

DRAWN BY: MCW		4/98
DESIGNED BY: INJ		4/98
CHECKED BY: INJ		4/98
PROJECT NO: 4884-3		SCALE: 1"=40' HORIZ. 1"=4' VERT.
SHEET 14 OF 14 SHEETS		
DRAWING NO. 1074-4478-3		
AMERICAN WEST HOMES, INC. 2700 E. SUNSET ROAD SUITE 5 LAS VEGAS, NV 89120 (702) 596-6404 2727 SOUTH RAINBOW BOULEVARD LAS VEGAS, NEVADA 89102-5148 PH. (702) 873-7550 FAX (702) 362-2557 nevada CONSULTING ENGINEERS • PLANNERS • ARCHITECTS • INTERIORS		
REV	DATE	BY



DURANGO DRIVE



NAME OF SERVICE

ALL WORK TO BE DONE IN ACCORDANCE WITH THE SPECIFICATIONS OF THE NATIONAL ELECTRICAL CONTRACTORS ASSOCIATION (NECA) AND THE NATIONAL ASSOCIATION OF ELECTRICAL DISTRIBUTION SYSTEMS (NAECS)

REVISIONS

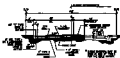
DATE OF REVISION

ENGINEER'S SIGNATURE

DATE OF ISSUE



STANDARD SECTION OF LINE



TOWER SECTION

Call before you Dig  
**OVERHEAD**  
 1-800-888-1888  
 1-800-237-3880

AMERICAN WEST HOMES, INC. STATE ST.	
1000 WEST 10TH AVENUE, SUITE 1000 DENVER, CO 80202	
PROJECT: DURANGO DRIVE SHEET: 1 OF 1 DATE: 12/27/88	