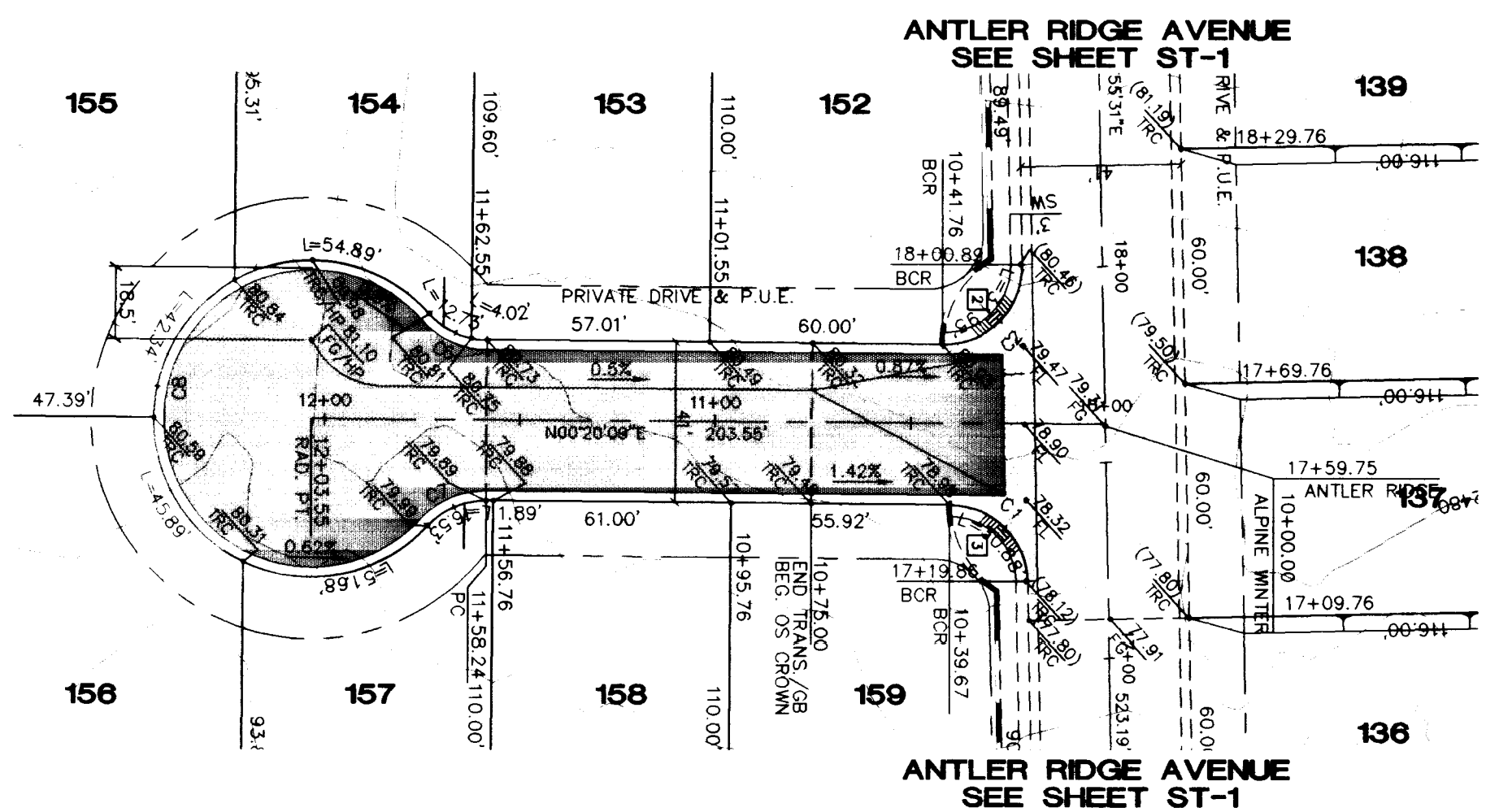


**BACK OF CURB CURVE DATA TABLE
(ALPINE WINTER COURT)**

No.	RADIUS	DELTA	LENGTH	TANGENT
C1	20.00'	88°27'26"	30.88'	19.47'
C2	20.00'	91°32'34"	31.95'	20.55'
C6	20.00'	47°58'39"	16.75'	8.90'
C7	20.00'	47°58'39"	16.75'	8.90'
C8	40.50'	275°57'18"	195.06'	36.50'



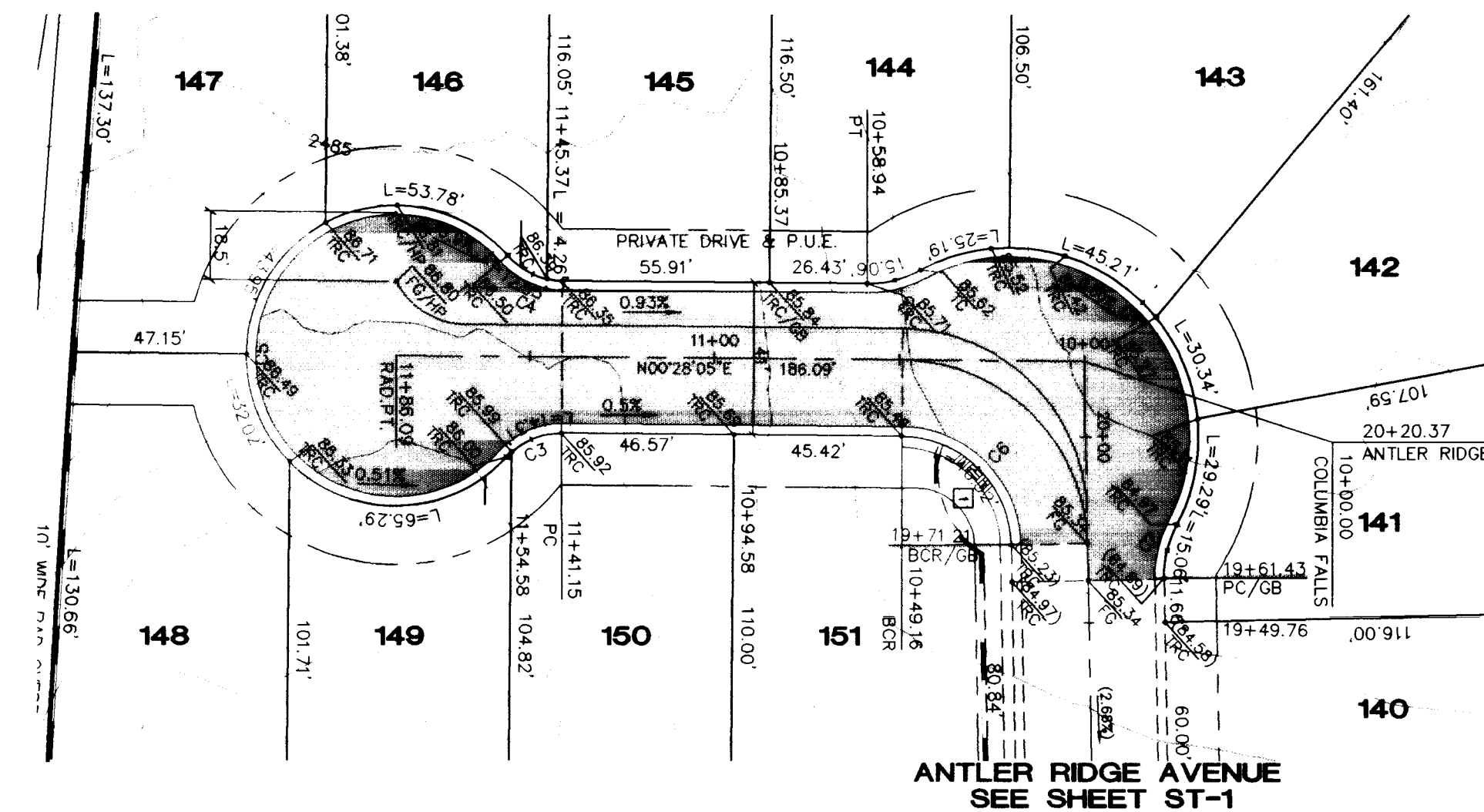
**ALPINE WINTER COURT
(PRIVATE DRIVE AND P.U.E.)**

**BACK OF CURB CURVE DATA TABLE
(COLUMBIA FALLS COURT)**

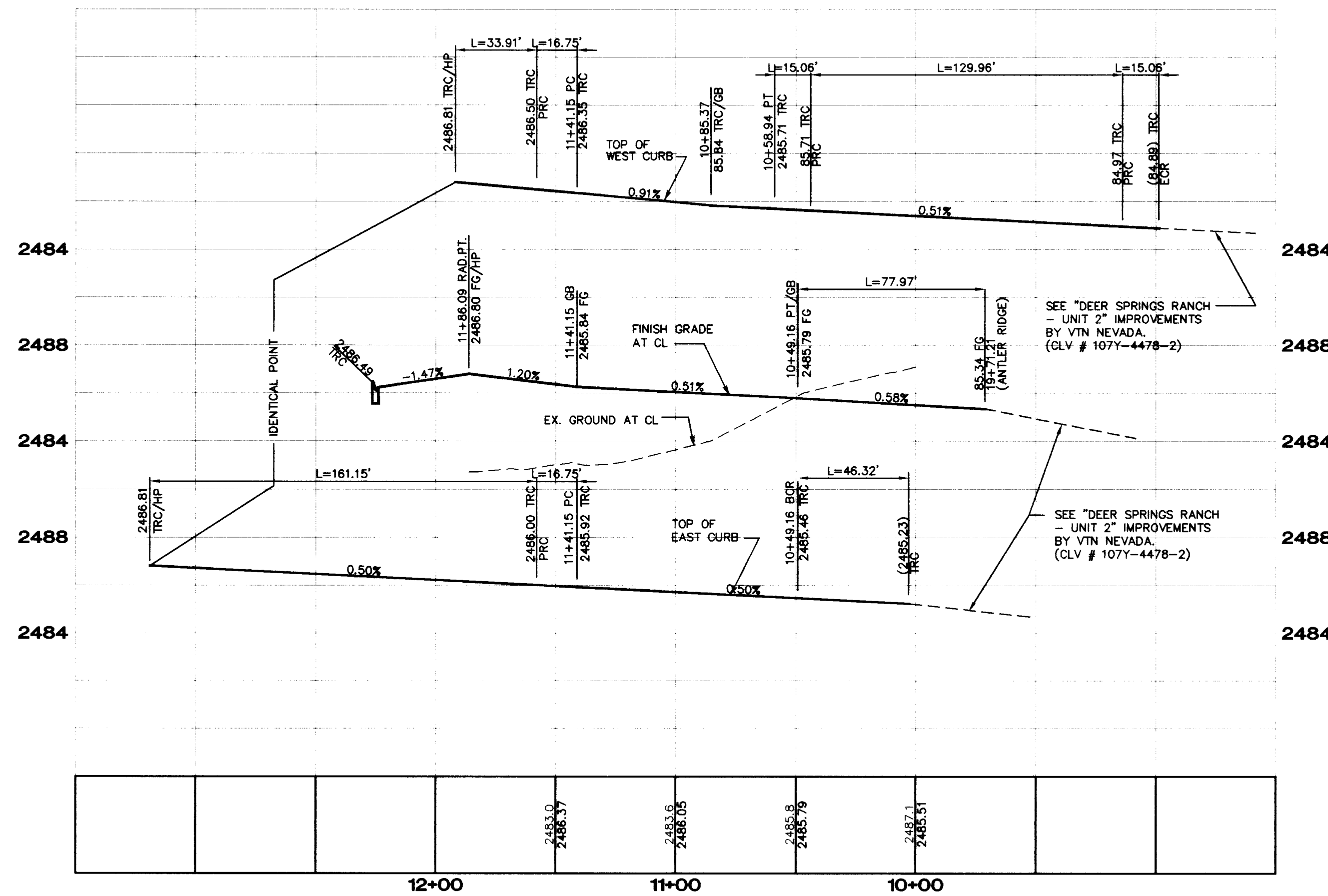
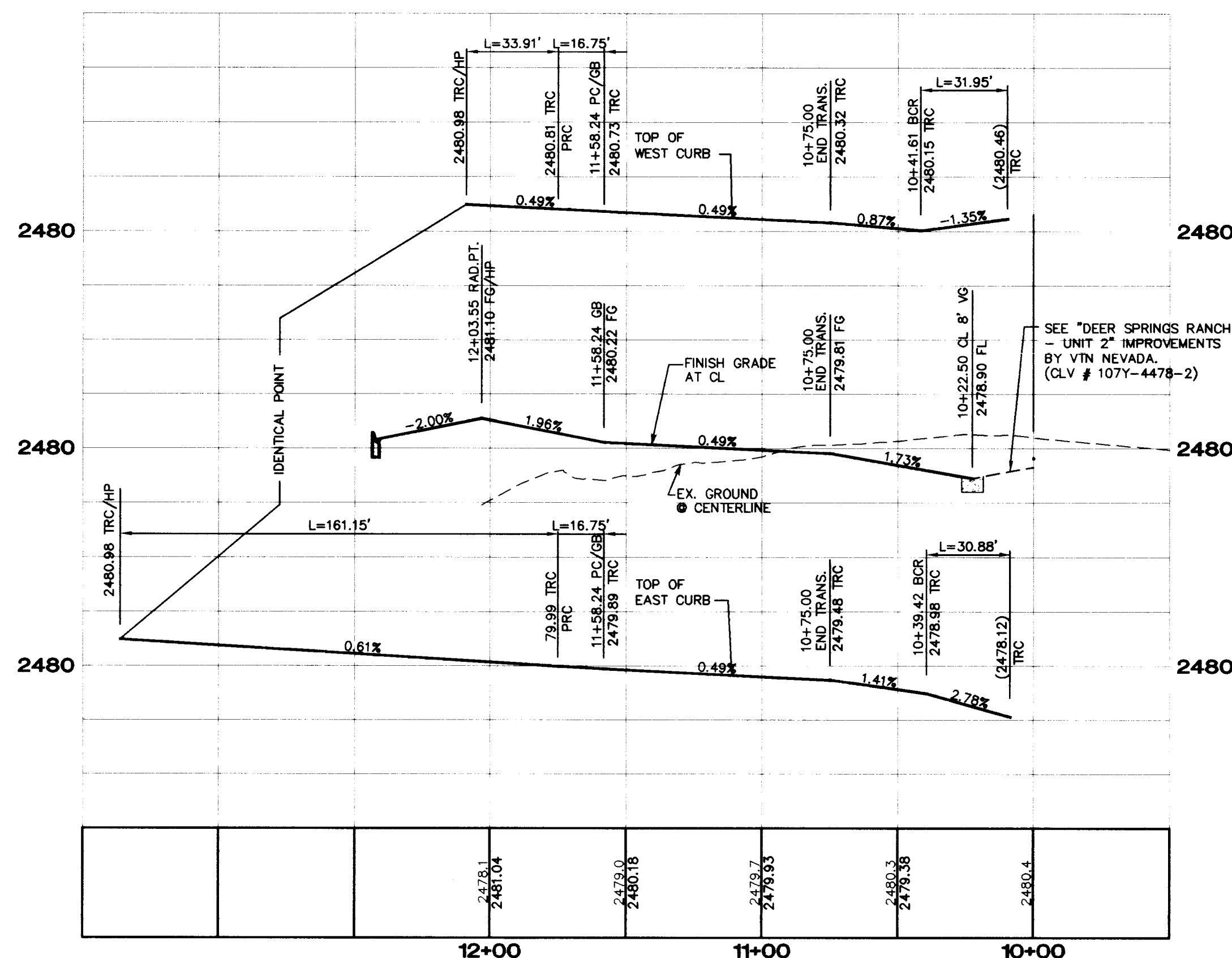
No.	RADIUS	DELTA	LENGTH	TANGENT
C1	51.00'	146°00'03"	129.96'	166.82'
C2	30.00'	28°46'19"	15.06'	7.69'
C3	20.00'	47°58'39"	16.75'	8.90'
C4	20.00'	47°58'39"	16.75'	8.90'
C5	40.50'	275°57'18"	195.06'	36.50'
C6	30.00'	88°27'26"	48.32'	29.20'
C7	30.00'	28°46'19"	15.06'	7.69'

SIDEWALK RAMP DATA

NO.	"A"	"B"
1	8.0'	8.0'
2	8.0'	8.0'
3	8.0'	8.0'
4	8.0'	8.0'
5	8.0'	8.0'
6	8.0'	8.0'
7	8.0'	8.0'



**COLUMBIA FALLS COURT
(PRIVATE DRIVE AND P.U.E.)**

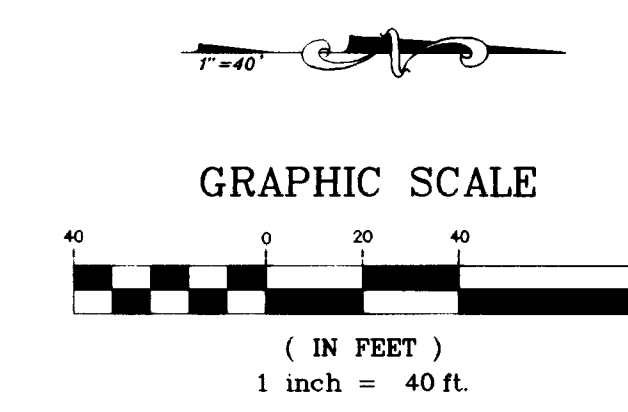
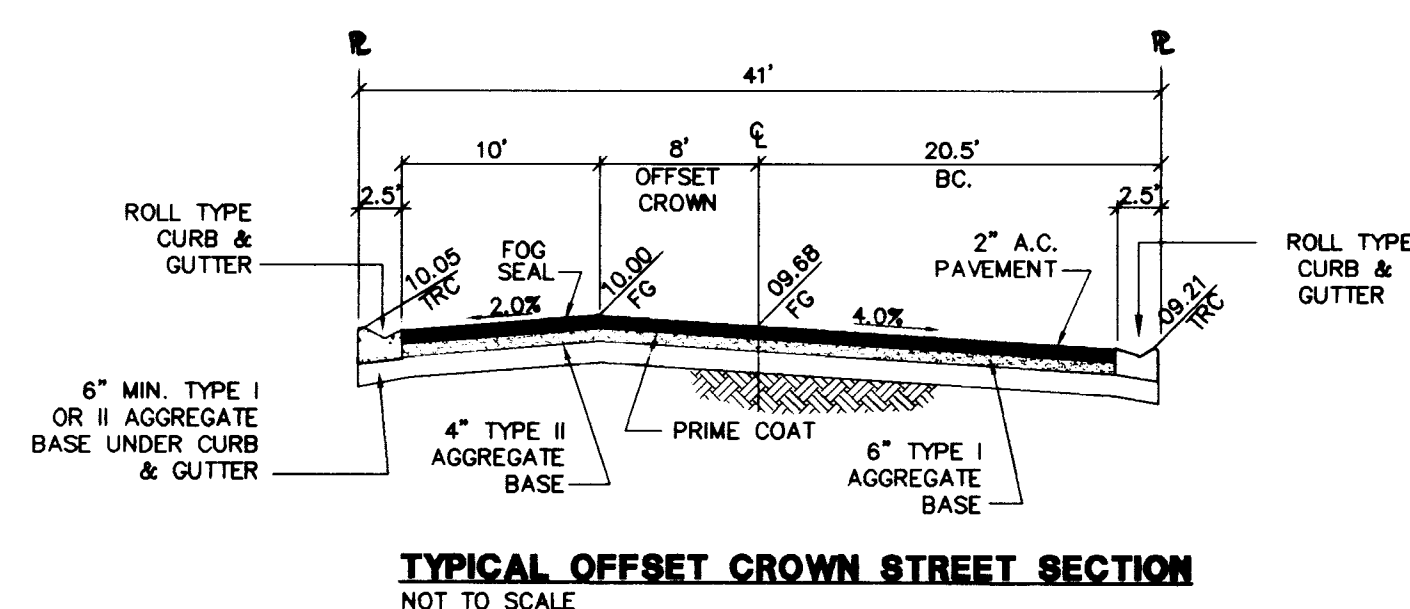


BASIS OF BEARINGS

SOUTH 88°55'31" WEST, BEING THE SOUTH LINE OF THE SOUTHWEST QUATER (SW 1/4) OF SECTION 21, T. 19 S., R. 60 E., M.D.M., CLARK COUNTY, NEVADA, COINCIDENT WITH THE CENTERLINE OF CENTENNIAL PARKWAY, AS SHOWN ON THAT CERTAIN MAP ON FILE IN THE OFFICE OF THE COUNTY RECORDER IN FILE #1 OF PARCEL MAPS AT PAGE 28.

BENCHMARK

CLARK COUNTY BM # 0C90 - 21NW6
RIVET AND SQUARE ALUMINUM PLATE IN TOP OF CENTER OF HEAD WALL ON THE WEST SIDE OF HIGHWAY - 95, NEAR MILE MARKER 88.95
ELEVATION = 764.787 METERS (NAVD'88)
ELEVATION = 2509.14 U.S. SURVEY FEET (NAVD'88)



Avoid overhead power line contact
Call before you Dig
1-702-593-6111 1-800-227-2600

AMERICAN WEST HOMES, INC.
2700 E. SUNSET ROAD SUITE 5
LAS VEGAS, NV 89120
(702) 736-6434

STREET PLAN & PROFILE
COLUMBIA FALLS COURT &
ALPINE WINTER COURT

DEER SPRINGS RANCH
UNIT 3

SCALE: 1"=40' HORIZ.
1"=4' VERT.

PROJECT NO.: 107Y-4478-3

DESIGNED BY: [Signature]
CHECKED BY: [Signature]

107Y-4478-3

TABLE OF JOINT NUMBERS FOR THIS CASE	
JOINT NO.	DESCRIPTION
1	...
2	...
3	...
4	...
5	...
6	...
7	...
8	...
9	...
10	...
11	...
12	...
13	...
14	...
15	...
16	...
17	...
18	...
19	...
20	...
21	...
22	...
23	...
24	...
25	...
26	...
27	...
28	...
29	...
30	...
31	...
32	...
33	...
34	...
35	...
36	...
37	...
38	...
39	...
40	...
41	...
42	...
43	...
44	...
45	...
46	...
47	...
48	...
49	...
50	...
51	...
52	...
53	...
54	...
55	...
56	...
57	...
58	...
59	...
60	...
61	...
62	...
63	...
64	...
65	...
66	...
67	...
68	...
69	...
70	...
71	...
72	...
73	...
74	...
75	...
76	...
77	...
78	...
79	...
80	...
81	...
82	...
83	...
84	...
85	...
86	...
87	...
88	...
89	...
90	...
91	...
92	...
93	...
94	...
95	...
96	...
97	...
98	...
99	...
100	...



ALPINE WINTER COURT

TABLE OF JOINT NUMBERS FOR THIS CASE	
JOINT NO.	DESCRIPTION
1	...
2	...
3	...
4	...
5	...
6	...
7	...
8	...
9	...
10	...
11	...
12	...
13	...
14	...
15	...
16	...
17	...
18	...
19	...
20	...
21	...
22	...
23	...
24	...
25	...
26	...
27	...
28	...
29	...
30	...
31	...
32	...
33	...
34	...
35	...
36	...
37	...
38	...
39	...
40	...
41	...
42	...
43	...
44	...
45	...
46	...
47	...
48	...
49	...
50	...
51	...
52	...
53	...
54	...
55	...
56	...
57	...
58	...
59	...
60	...
61	...
62	...
63	...
64	...
65	...
66	...
67	...
68	...
69	...
70	...
71	...
72	...
73	...
74	...
75	...
76	...
77	...
78	...
79	...
80	...
81	...
82	...
83	...
84	...
85	...
86	...
87	...
88	...
89	...
90	...
91	...
92	...
93	...
94	...
95	...
96	...
97	...
98	...
99	...
100	...

TABLE OF JOINT NUMBERS FOR THIS CASE	
JOINT NO.	DESCRIPTION
1	...
2	...
3	...
4	...
5	...
6	...
7	...
8	...
9	...
10	...
11	...
12	...
13	...
14	...
15	...
16	...
17	...
18	...
19	...
20	...
21	...
22	...
23	...
24	...
25	...
26	...
27	...
28	...
29	...
30	...
31	...
32	...
33	...
34	...
35	...
36	...
37	...
38	...
39	...
40	...
41	...
42	...
43	...
44	...
45	...
46	...
47	...
48	...
49	...
50	...
51	...
52	...
53	...
54	...
55	...
56	...
57	...
58	...
59	...
60	...
61	...
62	...
63	...
64	...
65	...
66	...
67	...
68	...
69	...
70	...
71	...
72	...
73	...
74	...
75	...
76	...
77	...
78	...
79	...
80	...
81	...
82	...
83	...
84	...
85	...
86	...
87	...
88	...
89	...
90	...
91	...
92	...
93	...
94	...
95	...
96	...
97	...
98	...
99	...
100	...



COLUMBIA FALLS COURT

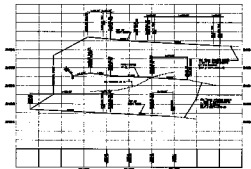
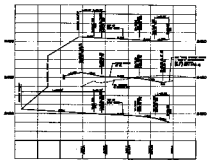


TABLE OF JOINT NUMBERS

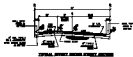
FOR THE STRUCTURAL ANALYSIS OF THE STRUCTURE
PROPOSED FOR CONSTRUCTION

DESCRIPTION

ALPINE WINTER COURT

DESIGNED BY **DOUGLAS W. HAYES**

DATE: **10/1/77**



Call
 before you
Dig
 1-800-888-4888

AMERICAN WEST HOMES, INC.
 1000 WEST 10TH AVENUE, SUITE 100
 DENVER, CO 80202
 (303) 733-1111

AMERICAN WEST HOMES, INC.
 1000 WEST 10TH AVENUE, SUITE 100
 DENVER, CO 80202
 (303) 733-1111

AMERICAN WEST HOMES, INC.
 1000 WEST 10TH AVENUE, SUITE 100
 DENVER, CO 80202
 (303) 733-1111