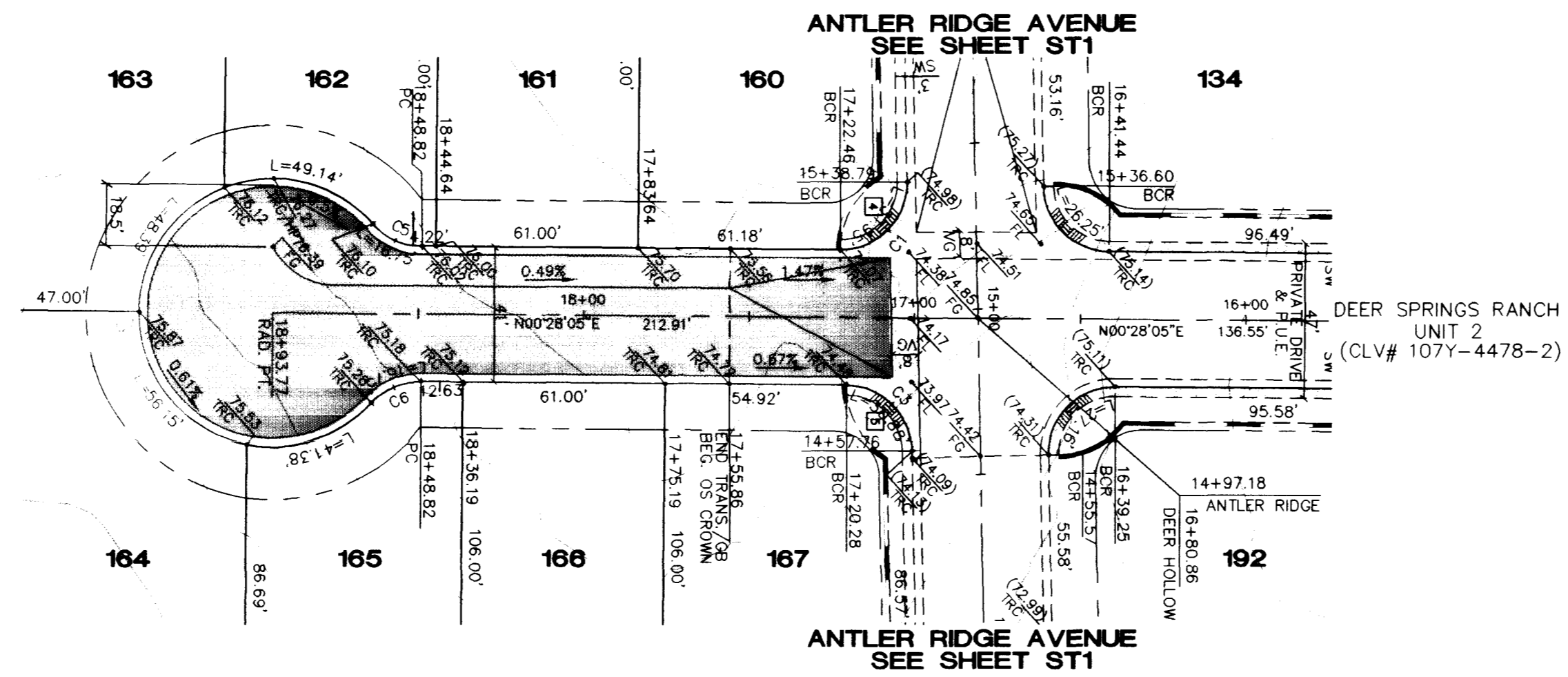


**BACK OF CURB CURVE DATA TABLE**

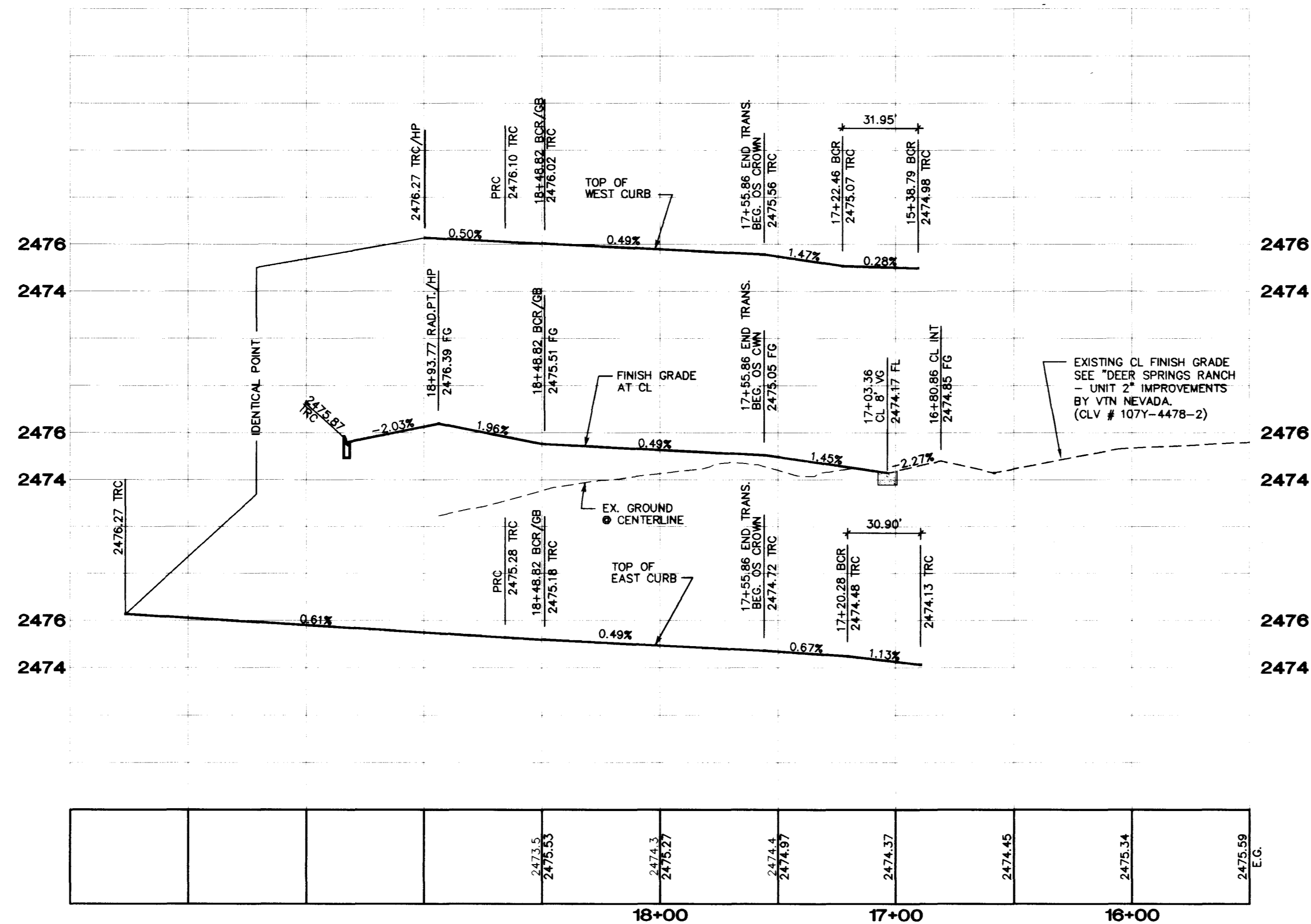
No.	RADIUS	DELTA	LENGTH	TANGENT
C1	20.00'	91°32'34"	31.95'	20.55'
C3	20.00'	88°27'26"	30.88'	19.47'
C5	20.00'	47°58'39"	16.75'	8.90'
C6	20.00'	47°58'39"	16.75'	8.90'
C7	40.50'	275°57'18"	195.06'	36.50'



**DEER HOLLOW STREET**  
(PRIVATE DRIVE AND P.U.E.)

**SIDEWALK RAMP DATA**

NO.	"A"	"B"
1	8'0"	8'0"
2	8'0"	8'0"
3	8'0"	8'0"
4	8'0"	8'0"
5	8'0"	8'0"
6	8'0"	8'0"
7	8'0"	8'0"

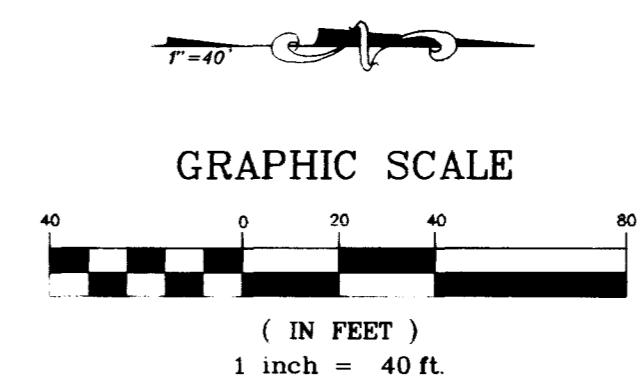
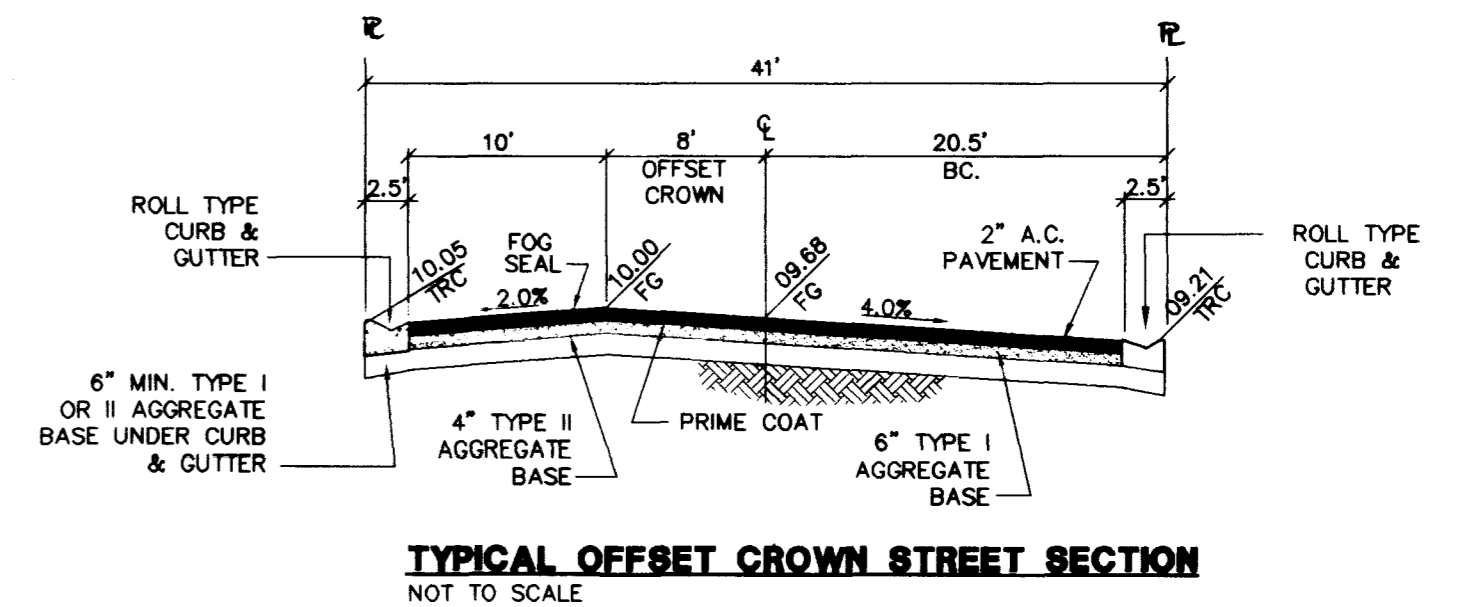


**BASIS OF BEARINGS**

SOUTH 88°55'31" WEST, BEING THE SOUTH LINE OF THE SOUTHWEST QUATER (SW 1/4) OF SECTION 21, T. 19 S., R. 60 E., M.D.M., CLARK COUNTY, NEVADA, COINCIDENT WITH THE CENTERLINE OF CENTENNIAL PARKWAY, AS SHOWN ON THAT CERTAIN MAP ON FILE IN THE OFFICE OF THE COUNTY RECORDER IN FILE B1 OF PARCEL MAPS AT PAGE 28.

**BENCHMARK**

CLARK COUNTY BM # 0090 - 21NW6  
RIVET AND SQUARE ALUMINUM PLATE IN TOP OF CENTER OF HEAD WALL ON THE WEST SIDE OF HIGHWAY - 95, NEAR MILE MARKER 88.95  
ELEVATION = 764.787 METERS (NAVD'88)  
ELEVATION = 2509.14 U.S. SURVEY FEET (NAVD'88)



Avoid cutting underground utility lines. It's costly.  
**Call before you Dig**  
1-702-593-6111 1-800-227-2600

NO.	DATE	BY	REASON

**AMERICAN WEST HOMES, INC.**  
2700 E. SUNSET ROAD SUITE 5  
LAS VEGAS, NV 89120  
(702) 736-6434

**VTN nevada** CONSULTING ENGINEERS • PLANNERS • LAND SURVEYORS  
PH: (702) 871-7550 FAX: (702) 363-1597  
2727 SOUTH RAINBOW BOULEVARD LAS VEGAS, NEVADA 89102-5148

**STREET PLAN & PROFILE**  
**DEER HOLLOW STREET**

**DEER SPRINGS RANCH**  
**UNIT 3**

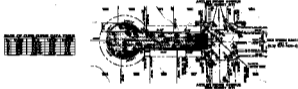
SHEET	TITLE
4/98	4/98

DRAWN BY: MCV 4/98  
DESIGNED BY: RLK 4/98  
CHECKED BY: JKL 4/98  
PROJECT NO.: 88R-3

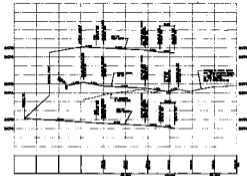
SCALE: 1" = 40' HORIZ.  
1" = 4' VERT.

SEAL  
[Signature]  
NO. 12345

SHEET **ST3**  
12 OF 14 SHEETS  
DRAWING NO. 107Y-4478-3



DEER HOLLOW STREET



SCALE: 1/8" = 1'-0"

NO. 100 200 300 400 500 600 700 800 900 1000

REVISIONS:

DATE: 10/10/88  
 DRAWN BY: J. J. [unreadable]  
 CHECKED BY: [unreadable]



Call  
 before you  
 Dig  
 1-800-221-3800

Call  
 before you  
 Dig  
 1-800-221-3800

AMERICAN WEST POWER, INC.	
1000 WEST 1000 NORTH, SALT LAKE CITY, UT 84119	
VOTED	
DATE: 10/10/88	BY: [unreadable]
SCALE: 1/8" = 1'-0"	PROJECT: [unreadable]