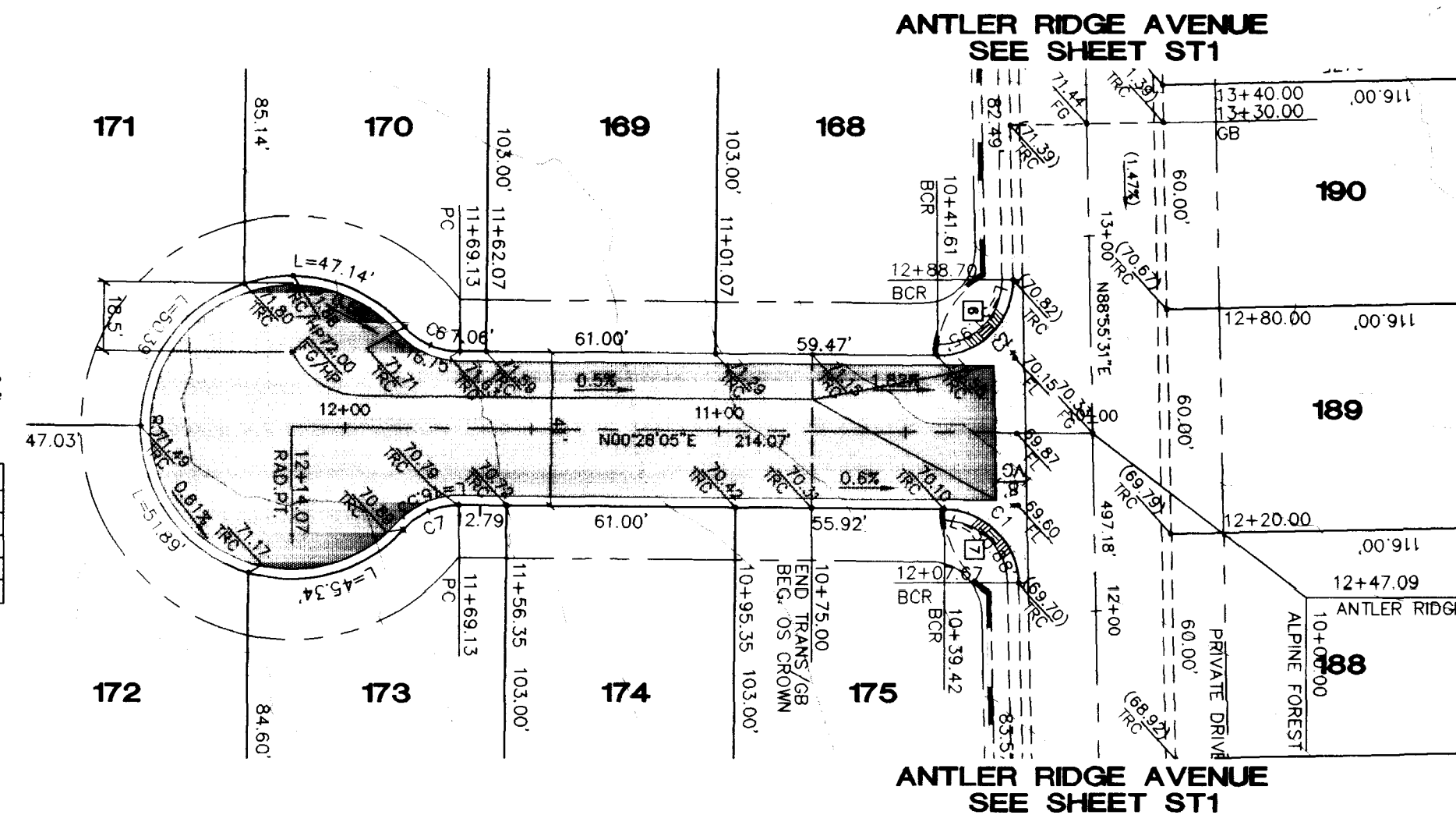


**BACK OF CURB CURVE DATA TABLE
(ALPINE FOREST COURT)**

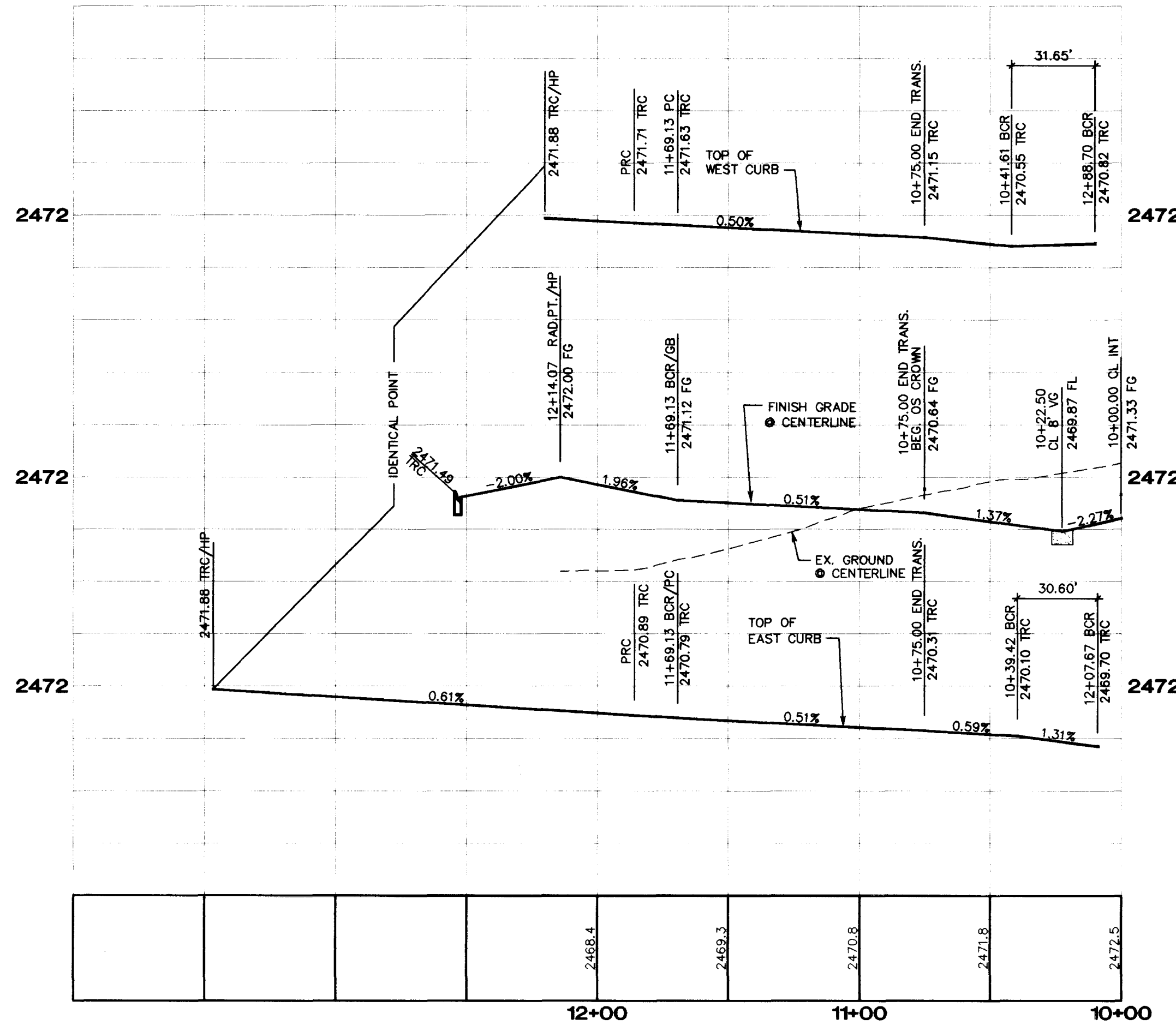
No.	RADIUS	DELTA	LENGTH	TANGENT
C1	20.00'	88°27'26"	30.88'	19.47'
C2	20.00'	91°32'34"	31.95'	20.55'
C6	20.00'	47°58'39"	16.75'	8.90'
C7	20.00'	47°58'39"	16.75'	8.90'
C8	40.50'	275°57'18"	195.06'	36.50'



**ALPINE FOREST COURT
(PRIVATE DRIVE AND P.U.E.)**

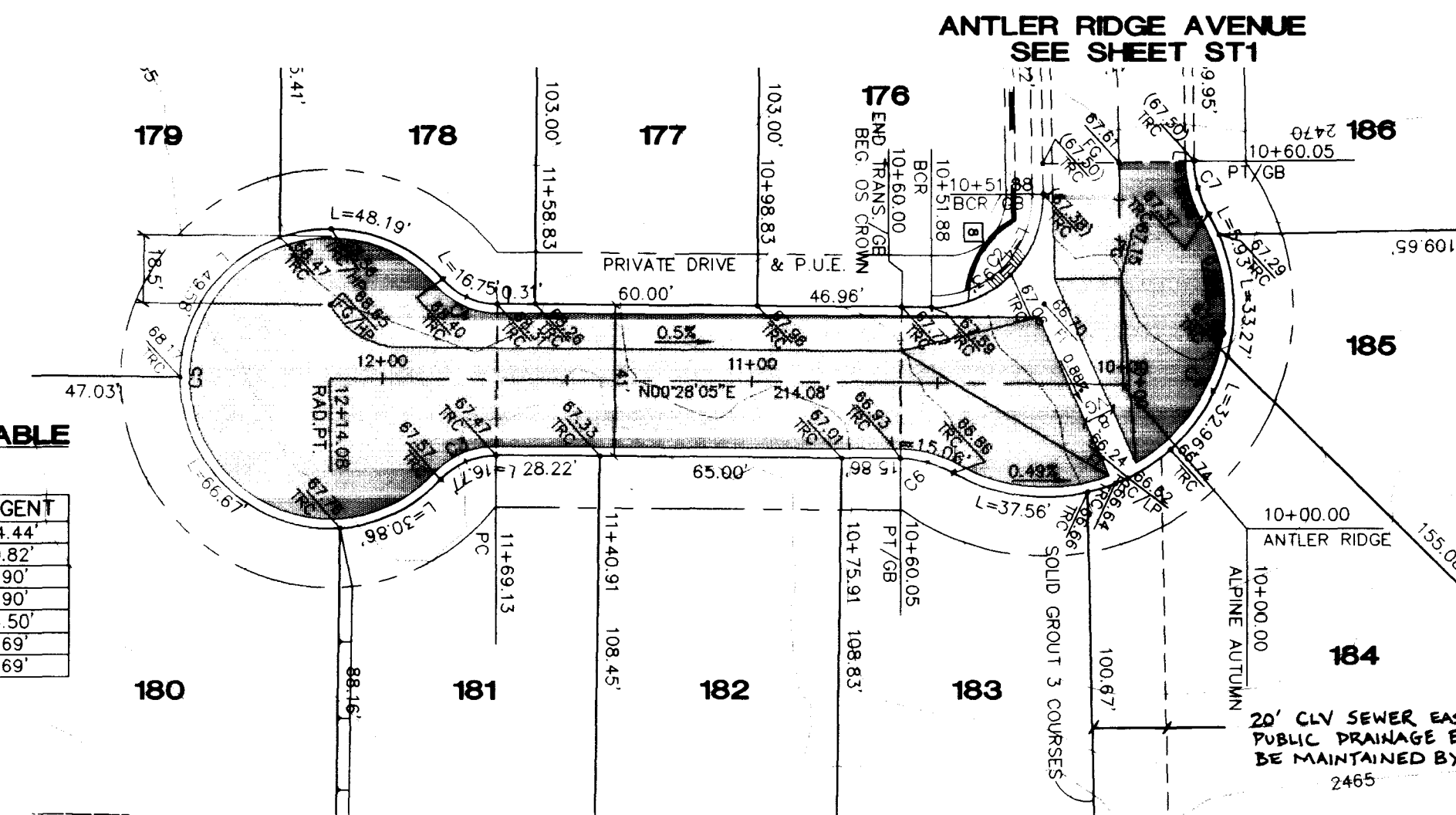
SIDEWALK RAMP DATA

NO.	"A"	"B"
1	8.0'	8.0'
2	8.0'	8.0'
3	8.0'	8.0'
4	8.0'	8.0'
5	8.0'	8.0'
6	8.0'	8.0'
7	8.0'	8.0'

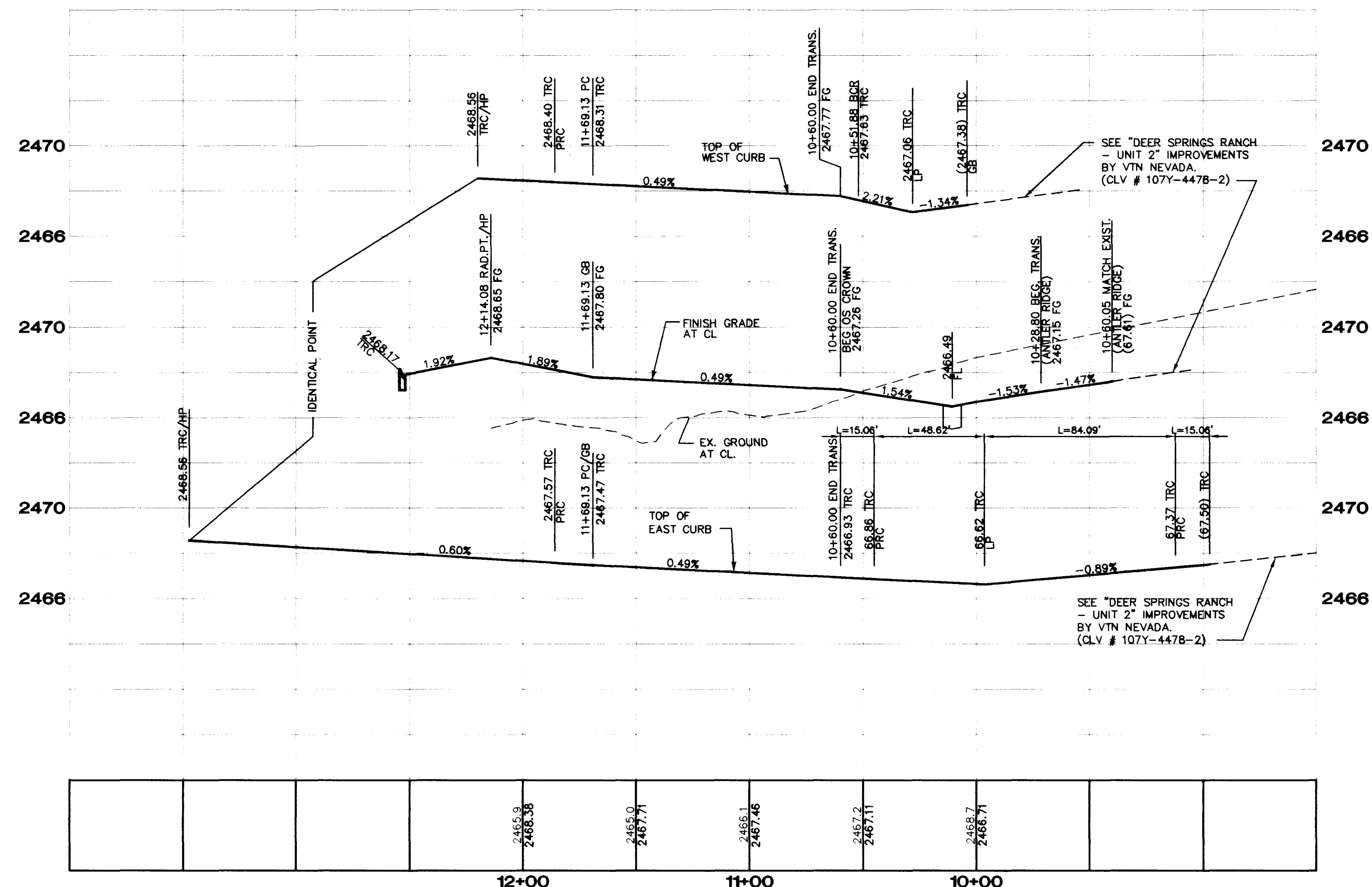


**BACK OF CURB CURVE DATA TABLE
(ALPINE AUTUMN COURT)**

No.	RADIUS	DELTA	LENGTH	TANGENT
C1	51.00'	149°05'12"	132.70'	184.44'
C2	30.00'	91°32'34"	47.93'	30.82'
C3	20.00'	47°58'39"	16.75'	8.90'
C4	20.00'	47°58'39"	16.75'	8.90'
C5	40.50'	275°57'18"	195.06'	36.50'
C6	30.00'	28°46'19"	15.06'	7.69'
C7	30.00'	28°46'19"	15.06'	7.69'



**ALPINE AUTUMN COURT
(PRIVATE DRIVE AND P.U.E.)**

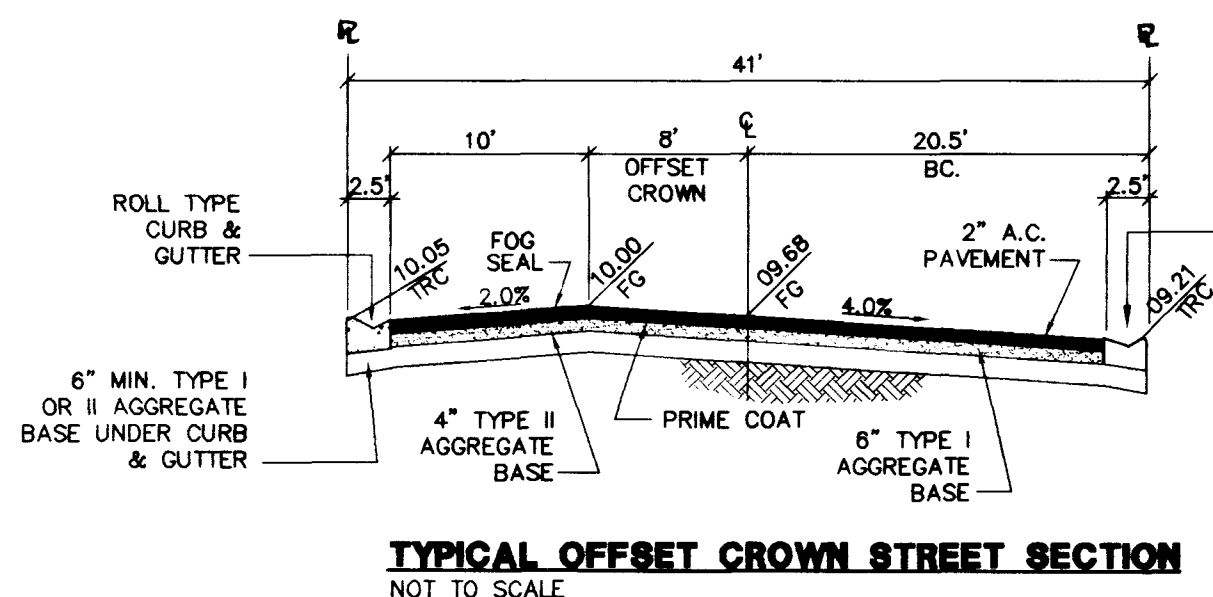


BASIS OF BEARINGS

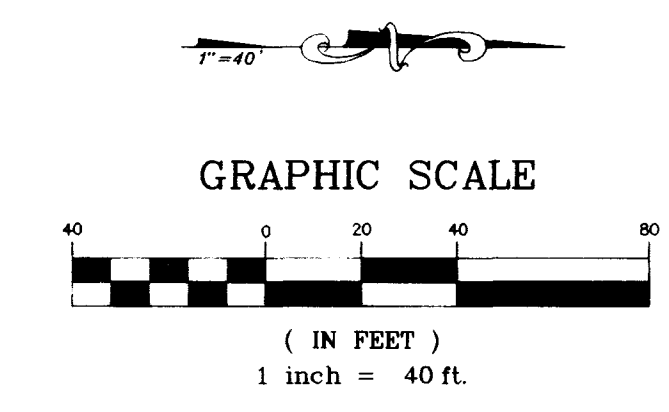
SOUTH 88°55'31" WEST, BEING THE SOUTH LINE OF THE SOUTHWEST QUATER (SW 1/4) OF SECTION 21, T. 19 S., R. 60 E., M.D.M., CLARK COUNTY, NEVADA, COINCIDENT WITH THE CENTERLINE OF CENTENNIAL PARKWAY, AS SHOWN ON THAT CERTAIN MAP ON FILE IN THE OFFICE OF THE COUNTY RECORDER IN FILE 81 OF PARCEL MAPS AT PAGE 28.

BENCHMARK

CLARK COUNTY BM # 0C90 - 21NWS
RIVET AND SQUARE ALUMINUM PLATE IN TOP OF CENTER OF HEAD WALL ON THE WEST SIDE OF HIGHWAY - 95, NEAR MILE MARKER 88.95
ELEVATION = 764.787 METERS (NAVD'88)
ELEVATION = 2509.14 U.S. SURVEY FEET (NAVD'88)



TYPICAL OFFSET CROWN STREET SECTION
NOT TO SCALE



Avoid overhead power line contact
Call before you Dig
1-702-593-6111 1-800-227-2600

AMERICAN WEST HOMES, INC.
2700 E. SUNSET ROAD, SUITE 5
LAS VEGAS, NV 89120
(702)736-6434

STREET PLAN & PROFILE
ALPINE FOREST COURT & ALPINE AUTUMN COURT
DEER SPRINGS RANCH UNIT 3

DRAWN BY: MCV 4/98
DESIGNED BY: IKJ 4/98
CHECKED BY: SKL 4/98
PROJECT NO: 4884-3
SCALE: 1"=40' HORIZ. 1"=4' VERT.

SHEET **ST2**
11 OF 14 SHEETS
DRAWING NO: 1074-4478-3

2727 SOUTH RAINBOW BOULEVARD LAS VEGAS, NEVADA 89102-5149
PH (702) 873-7550 FAX (702) 362-2397
www.vtn-nevada.com
vtn nevada CONSULTING ENGINEERS • P. ANNEP • S. J. J. J. J.



