

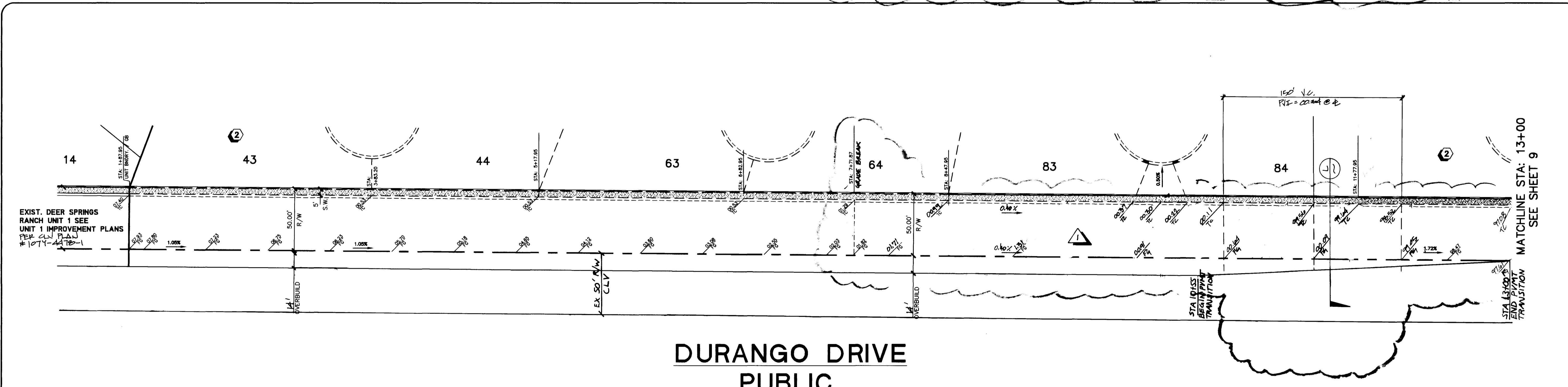
**AMERICAN WEST HOMES, INC.**  
**CITY OF LAS VEGAS, NEVADA**

CONSULTING ENGINEERS • PLANNERS • LAND SURVEYORS  
 2727 SOUTH RAINBOW BOULEVARD  
 LAS VEGAS, NEVADA 89102-5148 PHONE (702) 873-7550 FAX (702) 362-2597

**vtm nevada**

REV	DATE	BY
1	8/24/96	CHK
2		
3		

PROJECT: **REINING CLEARING DRIVE FOR C.L.V.**  
 DESIGNER: **RENSON**



**BASIS OF BEARINGS**

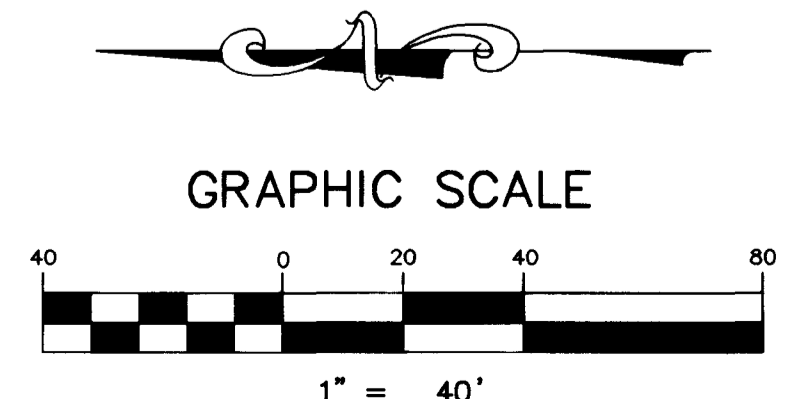
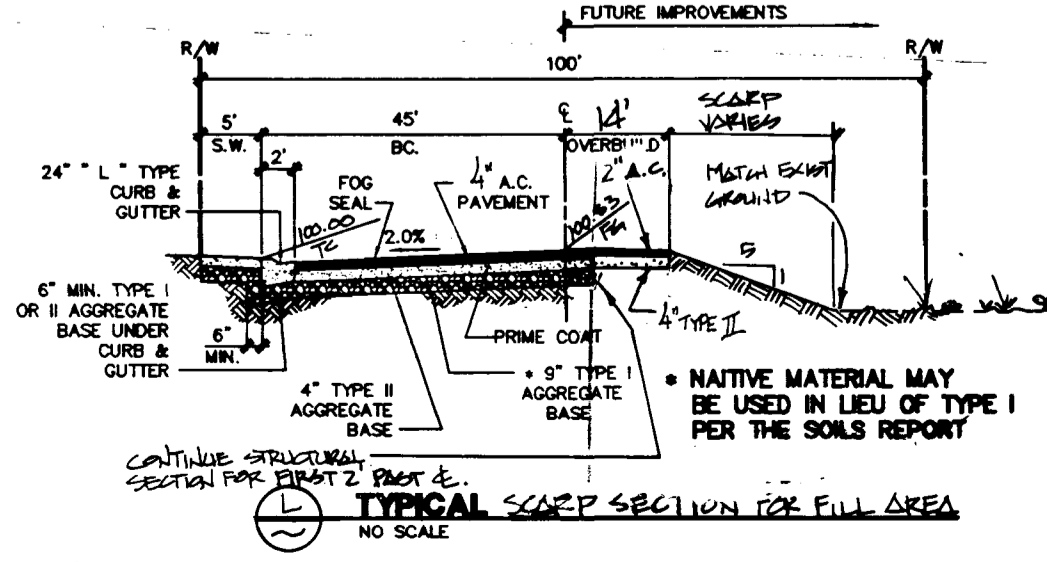
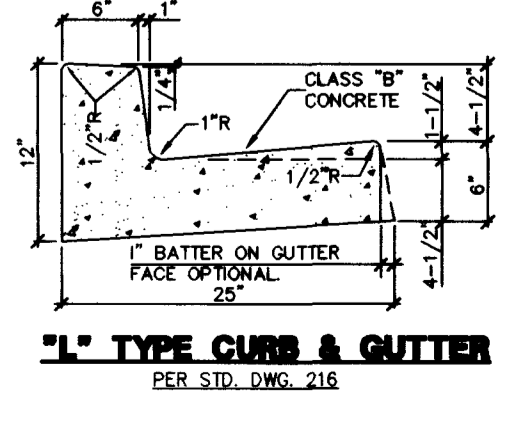
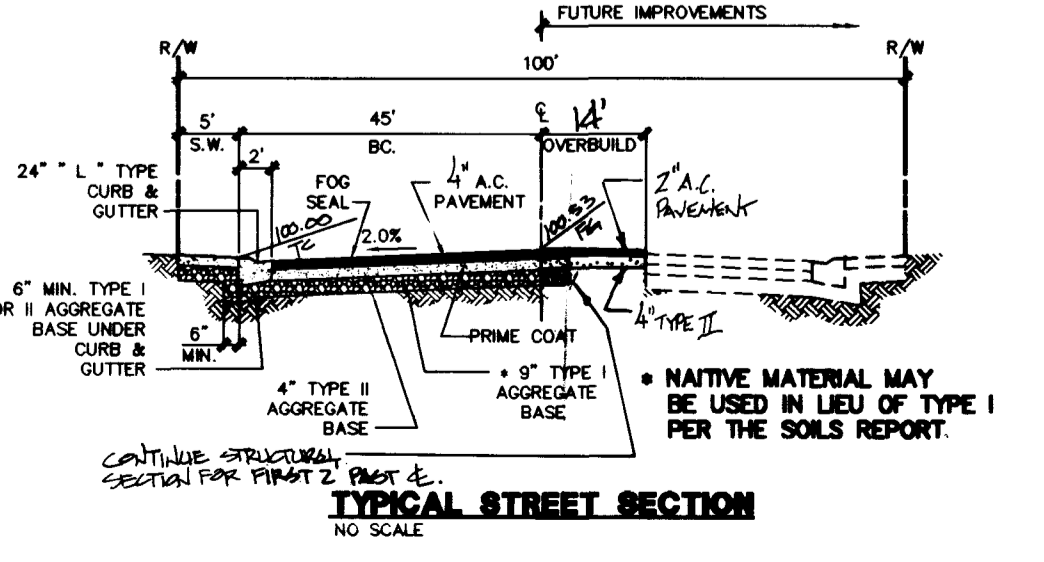
SOUTH 88° 55' 31" WEST, BEING THE SOUTH LINE OF THE SOUTHWEST QUARTER (SW 1/4) OF SECTION 21, T. 19 S., R. 60 E., M.D.M., CLARK COUNTY, NEVADA, COINCIDENT WITH THE CENTERLINE OF CENTENNIAL PARKWAY, AS SHOWN ON THAT CERTAIN MAP ON FILE IN THE OFFICE OF THE COUNTY RECORDER IN FILE 81 OF PARCEL MAPS AT PAGE 28.

**BENCHMARK**

CLARK COUNTY BM # 0C90 - 21NW6  
 RIVET AND SQUARE ALUMINUM PLATE IN TOP OF CENTER OF HEAD WALL ON THE WEST SIDE OF HIGHWAY - 95, NEAR MILE MARKER 88.95  
 ELEVATION = 784.787 METERS (NAVD/88)  
 ELEVATION = 2509.14 U.S. SURVEY FEET (NAVD/88)

Avoid cutting through underground utility lines unless you are sure of their location.

**Call before you Dig**  
 1-800-227-2600



**STREET PLAN - PROFILE**

**DURANGO DRIVE**

**DEER SPRINGS RANCH UNIT - 2**

TITLE

PROJECT

NO. **4884-2**

BY **CHK/RDM**

DATE **MAR, '96**

SCALE: HORIZ. 1"=40'  
 VERT. 1"=4'

SHEET **8** OF 28 SHEETS

Professional Engineer Seal: **JOHN JOHNSON**, CIVIL ENGINEER, No. 10651, State of Nevada, dated 30 JUNE 96.

H:\CAD\LANEV\4884\4884STP.DWG (BR-PROJ) PLOTTED BY: MCB

1074-4478-2

