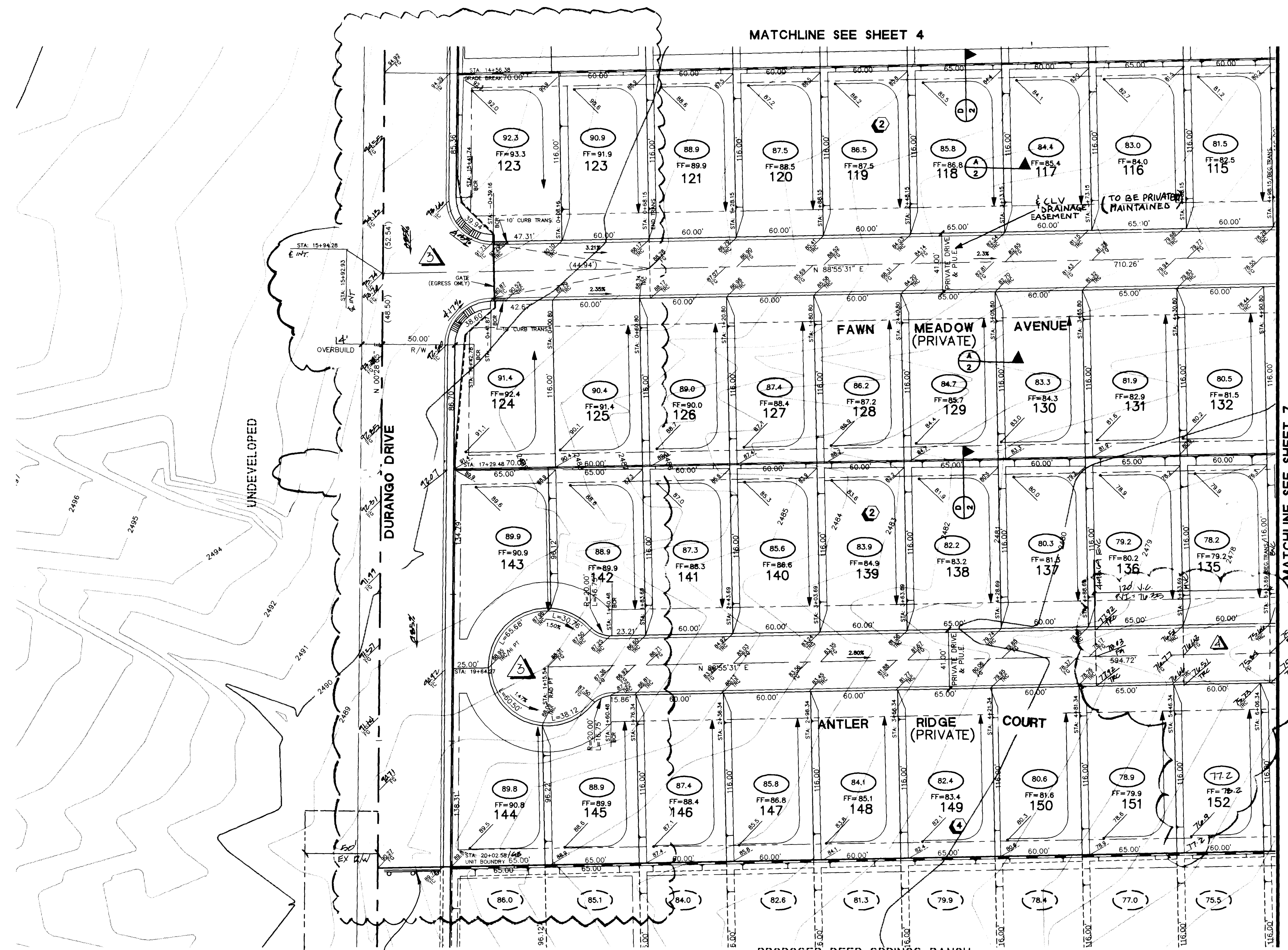


H:\CAD\LANDDEV\BBVA\BBVA.LAND Wed Jun 26 14:09:15 1996 PLOTTED BY: MCB



MATCHLINE SEE SHEET 4

MATCHLINE SEE SHEET 7

PROPOSED DEER SPRINGS RANCH UNIT 3

**BASIS OF BEARINGS**

SOUTH 88°55'31" WEST, BEING THE SOUTH LINE OF THE SOUTHWEST QUARTER (SW 1/4) OF SECTION 21, T. 19 S., R. 60 E., M.D.M., CLARK COUNTY, NEVADA, COINCIDENT WITH THE CENTERLINE OF CENTENNIAL PARKWAY, AS SHOWN ON THAT CERTAIN MAP ON FILE IN THE OFFICE OF THE COUNTY RECORDER IN FILE 81 OF PARCEL MAPS AT PAGE 28.

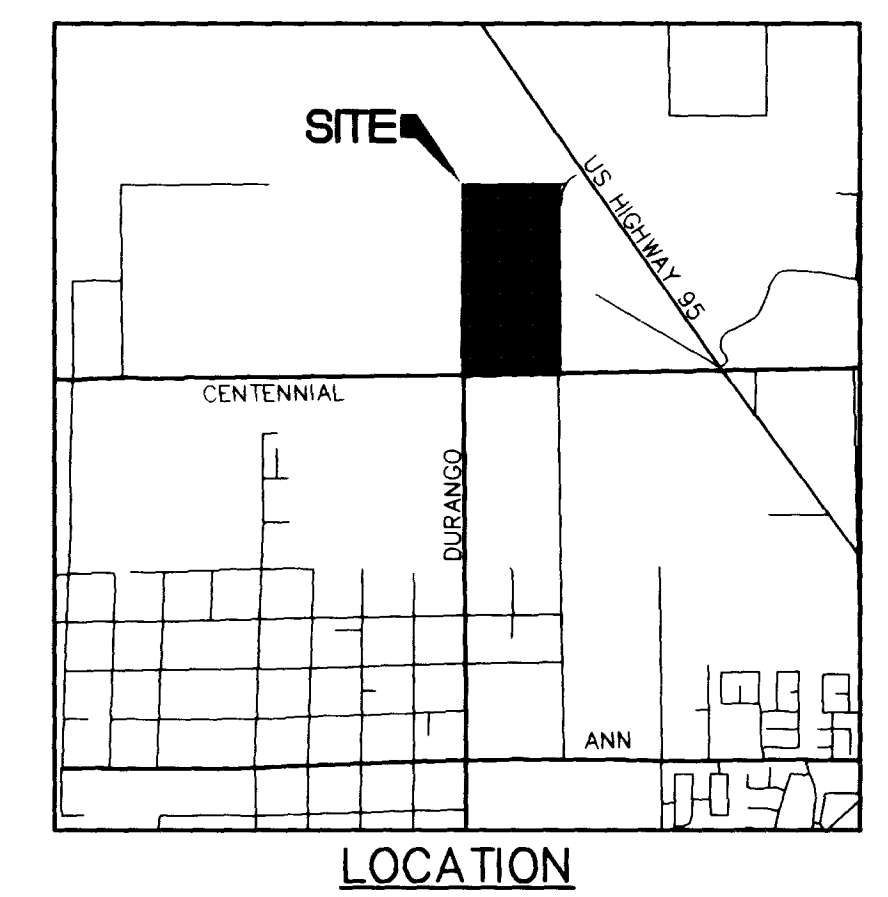
**BENCHMARK**

CLARK COUNTY BM # OC90 - 21NWS  
 RIVET AND SQUARE ALUMINUM PLATE IN TOP OF CENTER OF HEAD WALL ON THE WEST SIDE OF HIGHWAY - 95, NEAR MILE MARKER 88.95  
 ELEVATION = 764.787 METERS (NAVD'88)  
 ELEVATION = 2509.14 U.S. SURVEY FEET (NAVD'88)

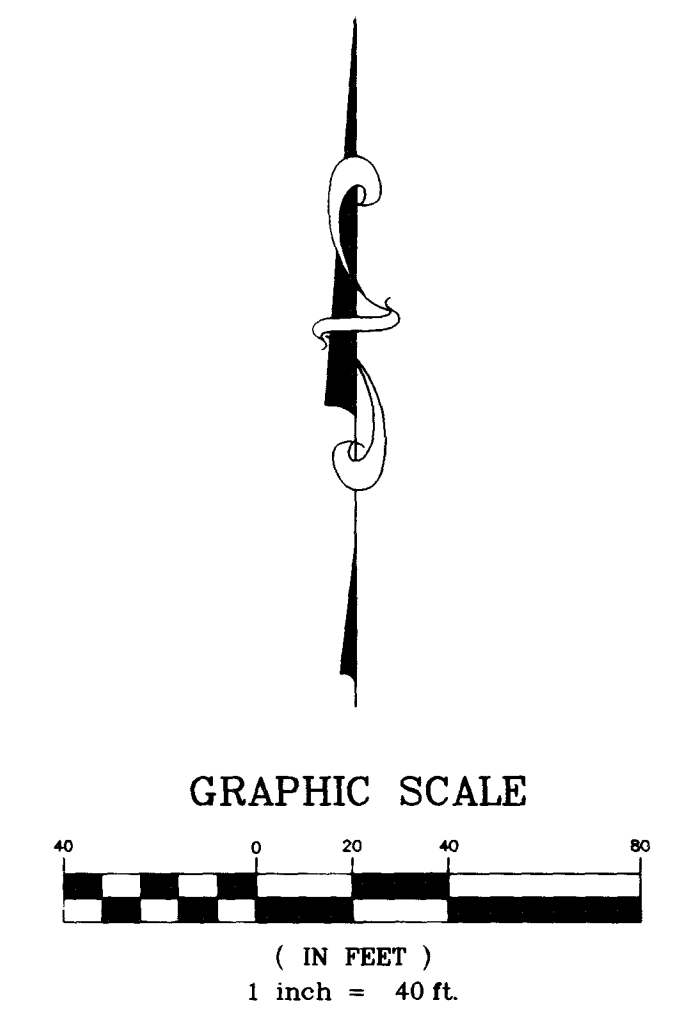
Call before you Dig  
 1-800-227-2600

Avoid cutting underground utility lines. It's costly.

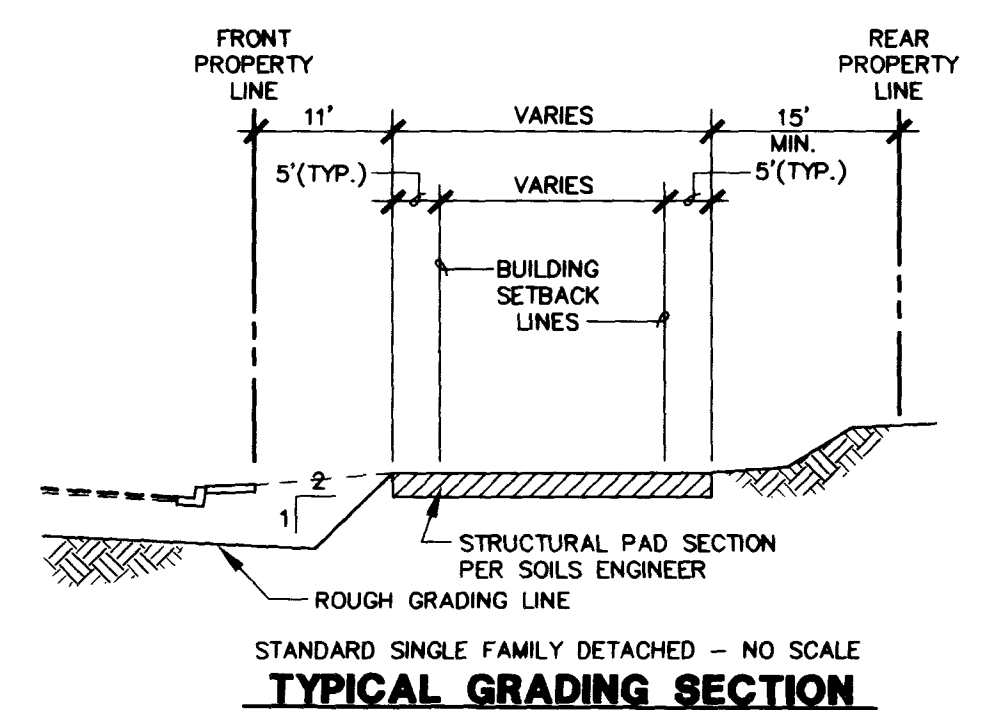
Small type III pipe/culvert w/ 1' E/O of road markers



LOCATION



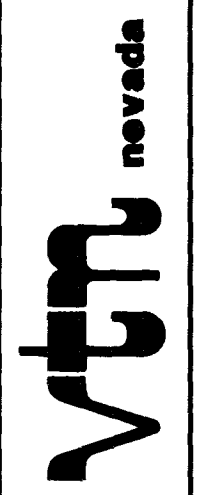
"I CERTIFY THAT THIS GRADING PLAN IS IN CONFORMANCE WITH THE APPROVED DRAINAGE STUDY ON FILE AT THE CITY OF LAS VEGAS FOR THIS PROJECT"  
 [Signature] 20 JUNE 96  
 ENGINEER DATE



STANDARD SINGLE FAMILY DETACHED - NO SCALE  
**TYPICAL GRADING SECTION**

10/10/94	CLP	FEEL DURANGO DR. PER CLV
5/11/96	CLP	ADD CUL-DE-SAC TO ANTLER RIDGE, "PUNCH THROUGH"
5/26/96	CRK	FARM MEADOW & ADD GATE TO FARM MEADOW
5/29/96	RDV	REV. PER CLV COMMENTS
5-15-96	RDV	REV. PER HYDRO. COMMENTS
	REV	DATE
	BY	REVISION

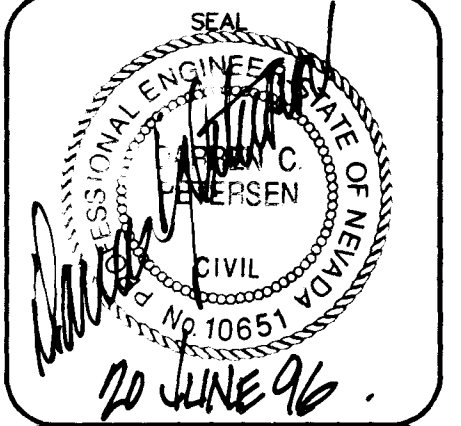
AMERICAN WEST HOMES, INC.  
 CITY OF LAS VEGAS, NEVADA



CONSULTING ENGINEERS • PLANNERS • LAND SURVEYORS  
 2727 SOUTH RAINBOW BOULEVARD  
 LAS VEGAS, NEVADA 89102-5148 PHONE (702) 873-7550 FAX (702) 362-2597

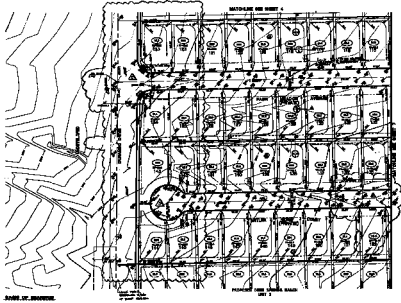
**FINAL ROUGH GRADING PLAN**

**DEER SPRINGS RANCH UNIT 2**



NO NO.	4884-2
BY	CKH/RDM
DATE	FEB, 96
SCALE	HORIZ. 1"=40' VERT. NONE
SHEET	6 OF 28 SHEETS

107V-4478-2



STATE OF MISSISSIPPI  
 MISSISSIPPI DEPARTMENT OF  
 TRANSPORTATION  
 ARCHITECT  
 MISSISSIPPI DEPARTMENT OF  
 TRANSPORTATION  
 1200 BAYVIEW DRIVE  
 MONROE, LA 70502

MISSISSIPPI  
 DEPARTMENT OF  
 TRANSPORTATION  
 ARCHITECT



1. VERIFY THAT THE ORIGINAL PLAN IS IN  
 CONFORMANCE WITH THE SPECIFICATIONS  
 AND THE CITY OF LITTLE ROCK  
 SPECIFICATIONS.



6

DATE: 10/1/78  
 DRAWN BY: J. C. [unclear]  
 CHECKED BY: [unclear]  
 TITLE: [unclear]

FINAL, ROUGH, OR DETAILED PLAN  
 DEER SPRINGS BRANCH  
 UNIT 8

MISSISSIPPI DEPARTMENT OF TRANSPORTATION  
 OFFICE OF PLANNING AND DESIGN

DATE: 10/1/78  
 DRAWN BY: J. C. [unclear]  
 CHECKED BY: [unclear]  
 TITLE: [unclear]

CONTRACT NO. T-108(1) - PLANNING & DESIGN SERVICES  
 FOR THE STATE OF MISSISSIPPI

VTM