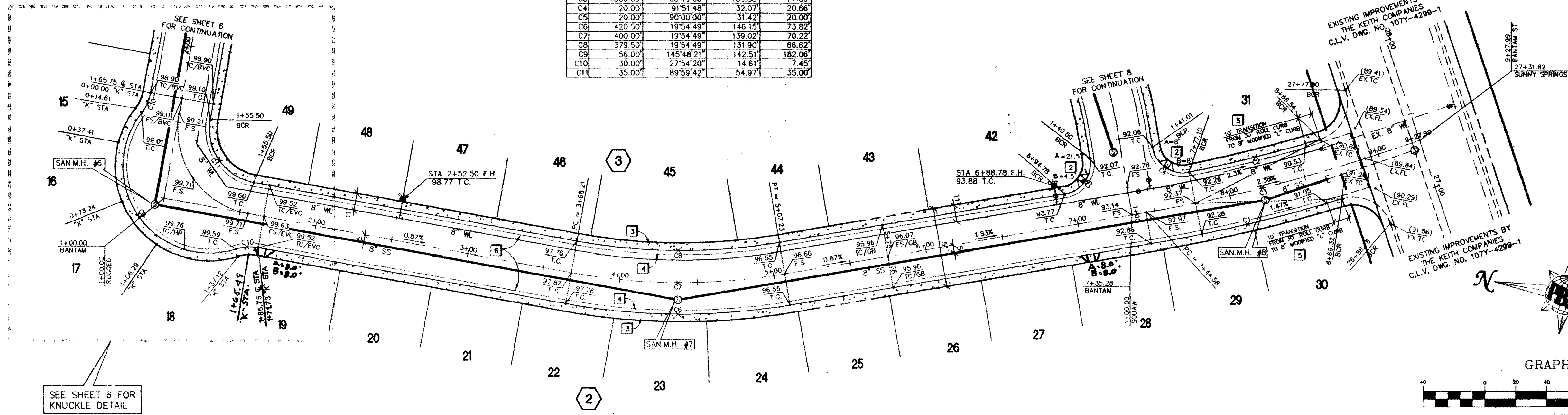


BACK OF CURB & C CURVE DATA TABLE

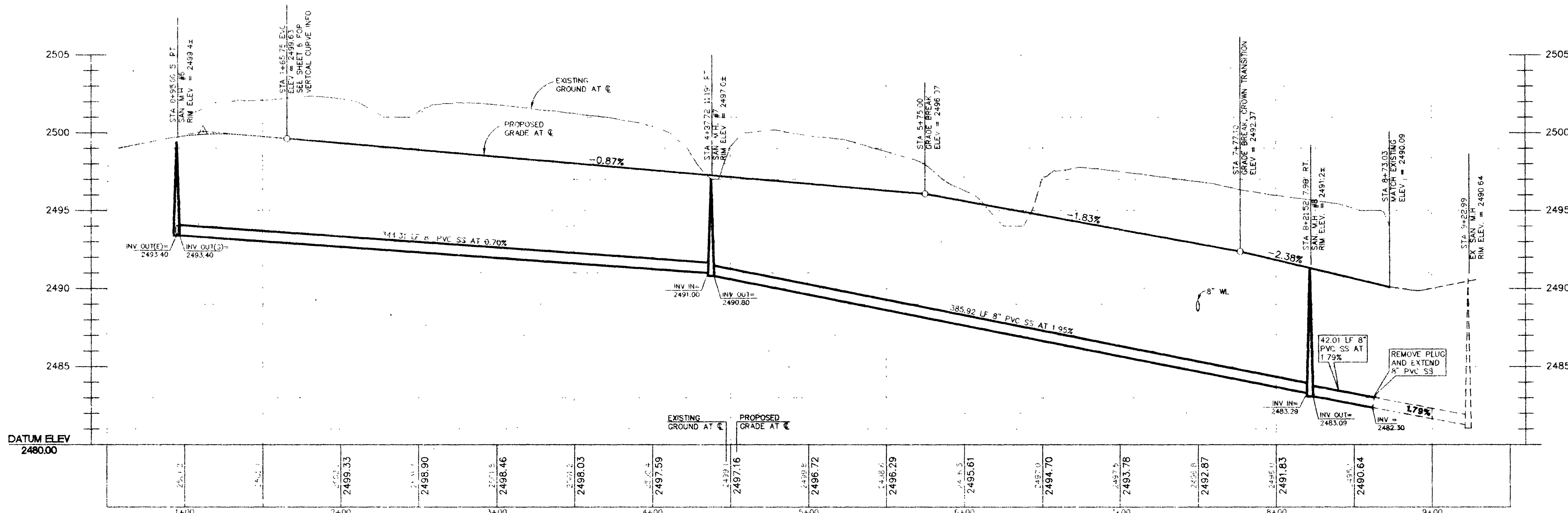
No.	RADIUS	DELTA	LENGTH	TANGENT
C1	1020.50	07°08'49"	127.29'	63.73'
C2	979.50	05°07'28"	97.60'	43.83'
C3	1000.00	08°49'00"	153.98'	77.09'
C4	20.00	91°51'48"	32.07'	20.66'
C5	20.00	90°00'00"	31.42'	20.00'
C6	450.50	19°54'49"	146.15'	73.02'
C7	400.00	19°54'49"	136.02'	70.22'
C8	379.50	19°54'49"	131.90'	66.62'
C9	56.00	145°48'21"	142.51'	182.06'
C10	50.00	27°54'20"	14.61'	7.45'
C11	35.00	89°59'42"	54.97'	35.00'



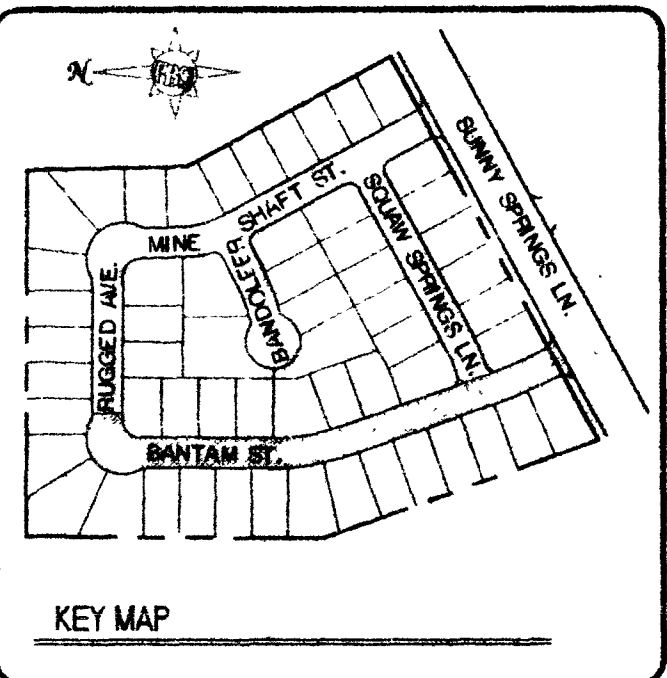
**BANTAM ST. - PLAN VIEW**  
HORIZONTAL SCALE 1" = 40'

NOTE:  
IF WATER MAIN CROSSING CANNOT BE 18" ABOVE SANITARY SEWER/STORM DRAIN, THE SANITARY SEWER/STORM DRAIN SHALL BE EITHER WELDED STEEL CONCRETE ENCASED OR BUILT OF WATER QUALITY PIPE MATERIAL TO 10' EITHER SIDE OF WATER MAIN CROSSING.

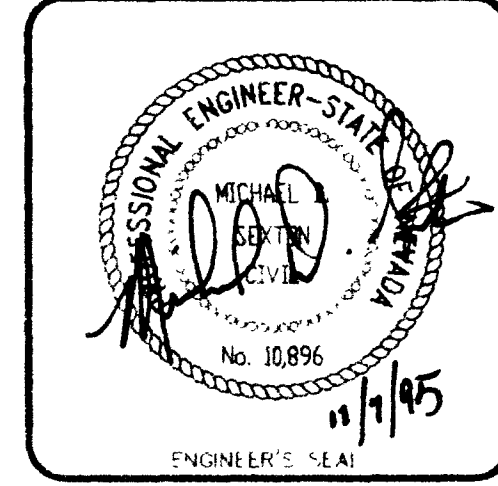
- CONSTRUCTION NOTES**
- CONSTRUCT 8" CONCRETE CROSS GUTTER PER CLARK COUNTY AREA STANDARD DWG. NO. 228
  - CONSTRUCT SIDEWALK RAMP (CASE I) PER CLARK COUNTY AREA STANDARD DWG. NO. 235. (TRANSITION LENGTHS A & B SHOWN ON PLAN)
  - CONSTRUCT 5' WIDE CONCRETE SIDEWALK, 5" THICK PER CLARK COUNTY STANDARD DWG. NO. 234 & DWG. NO. 217A.
  - CONSTRUCT 30" ROLL TYPE CURB & GUTTER PER CLARK COUNTY AREA STANDARD DWG. NO. 217A.
  - CONSTRUCT 10' TRANSITION FROM 30" ROLL TYPE CURB TO EXISTING 8" MODIFIED "L" TYPE CURB
  - CONSTRUCT 2" A.C. PAVEMENT ABOVE 6" TYPE I OR II ABOVE 4" TYPE II AGGREGATE BASE



**BANTAM ST. - PROFILE**  
HORIZONTAL SCALE 1" = 40'  
VERTICAL SCALE 1" = 4'



Call before you Dig  
1-800-227-2600



Job Number	Drawn by	Scale	Checked by	File No.	Date	No.	REVISIONS	Date	Instr.	Appr.
5848	RM	1" = 40'	WLL	848MP	NOV 8 1995					
Sheet Number	7 OF 8									

