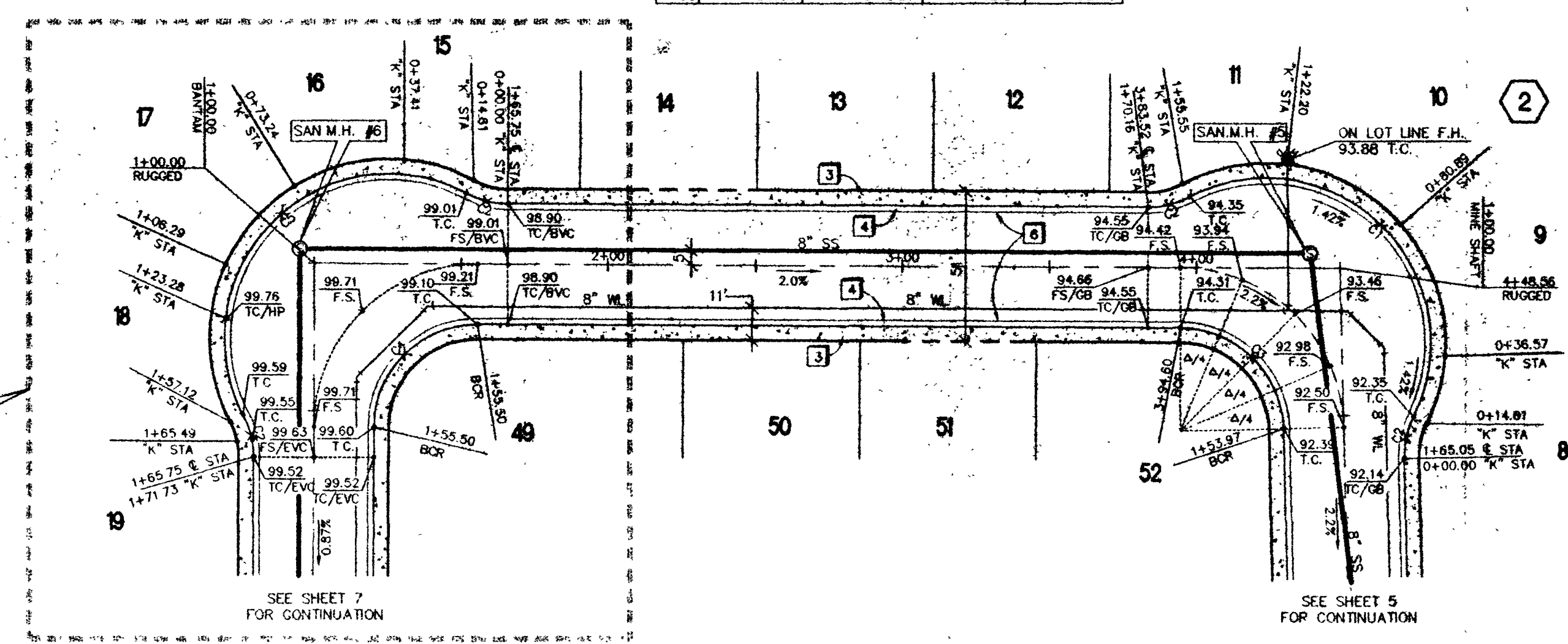
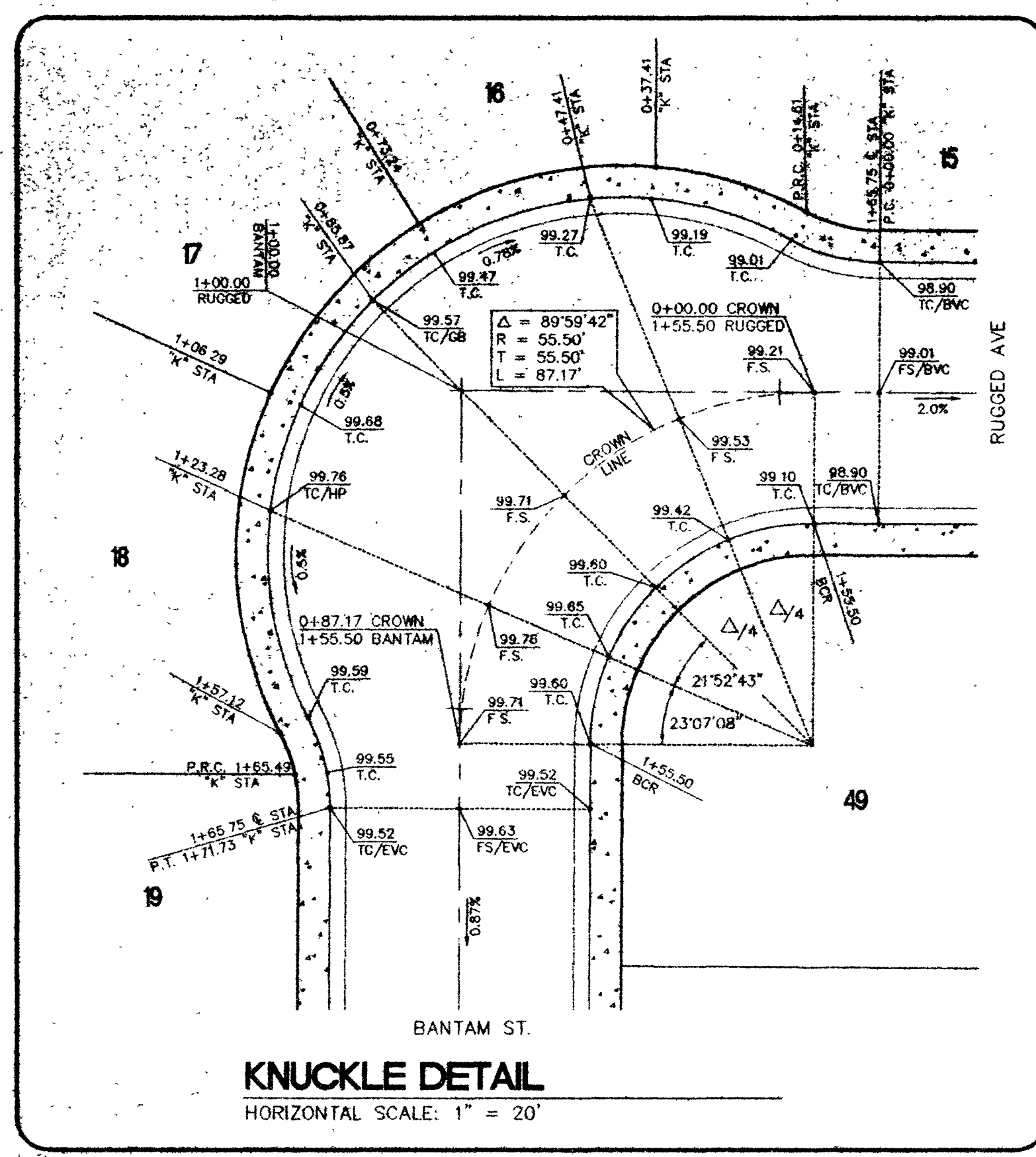
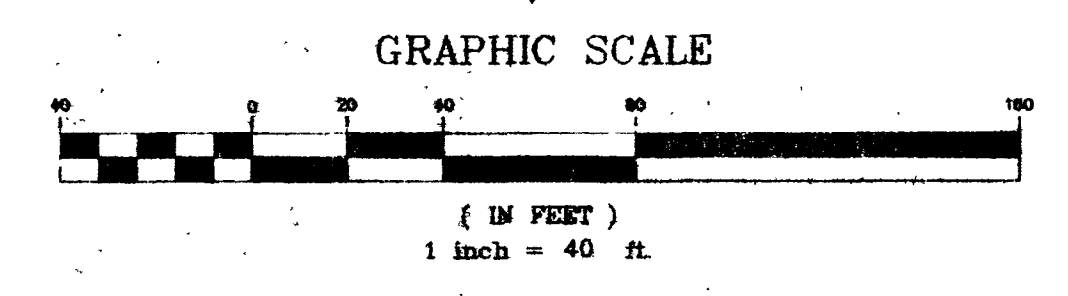
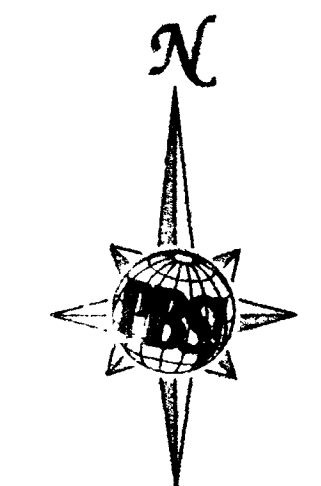


No.	RADIUS	DELTA	LENGTH	TANGENT
C1	56.00	144°12'08"	140.94	173.39
C2	30.00	27°54'20"	14.61	7.45
C3	35.00	82°21'29"	54.00	34.03
C4	35.00	83°59'42"	54.97	35.00
C5	56.00	145°48'21"	142.51	182.08



RUGGED AVE. - PLAN VIEW
HORIZONTAL SCALE: 1" = 40'

NOTE:
1" WATER MAIN CROSSING CANNOT BE 18" ABOVE SANITARY SEWER/STORM DRAIN. THE SANITARY SEWER/STORM DRAIN SHALL BE EITHER WELDED STEEL, CONCRETE ENCASED OR BUILT OF WATER QUALITY PIPE MATERIAL TO 10' EITHER SIDE OF WATER MAIN CROSSING.

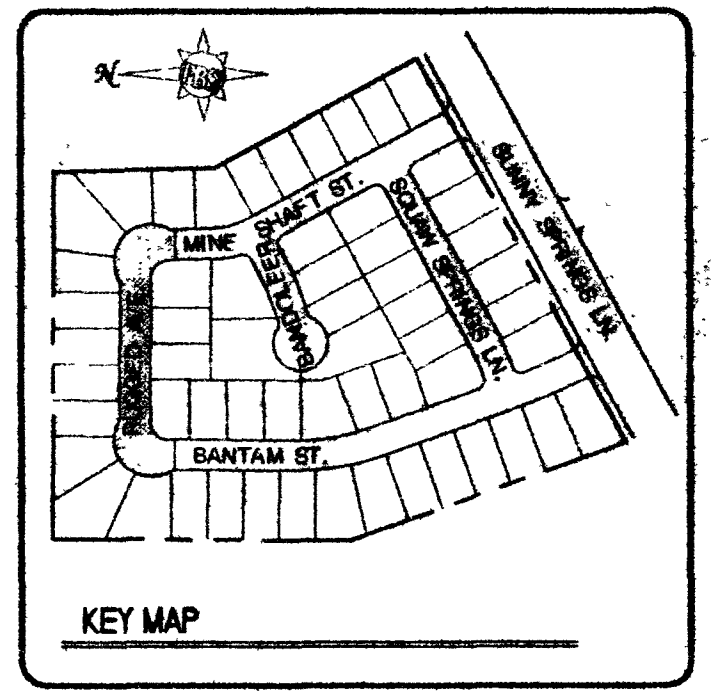
CONSTRUCTION NOTES

1. CONSTRUCT 8" CONCRETE CROSS GUTTER PER CLARK COUNTY AREA STANDARD DWG. NO. 228.
2. CONSTRUCT SIDEWALK RAMP (CASE 1) PER CLARK COUNTY AREA STANDARD DWG. NO. 235. (TRANSITION LENGTHS A & B SHOWN ON PLAN)
3. CONSTRUCT 5" WIDE CONCRETE SIDEWALK, 5" THICK PER CLARK COUNTY STANDARD DWG. NO. 234 & DWG. NO. 217A.
4. CONSTRUCT 30" ROLL TYPE CURB & GUTTER PER CLARK COUNTY AREA STANDARD DWG. NO. 217A.
5. NOT USED ON THIS SHEET
6. CONSTRUCT 2" A.C. PAVEMENT OVER 6" TYPE I OR II OVER 4" TYPE II AGGREGATE BASE

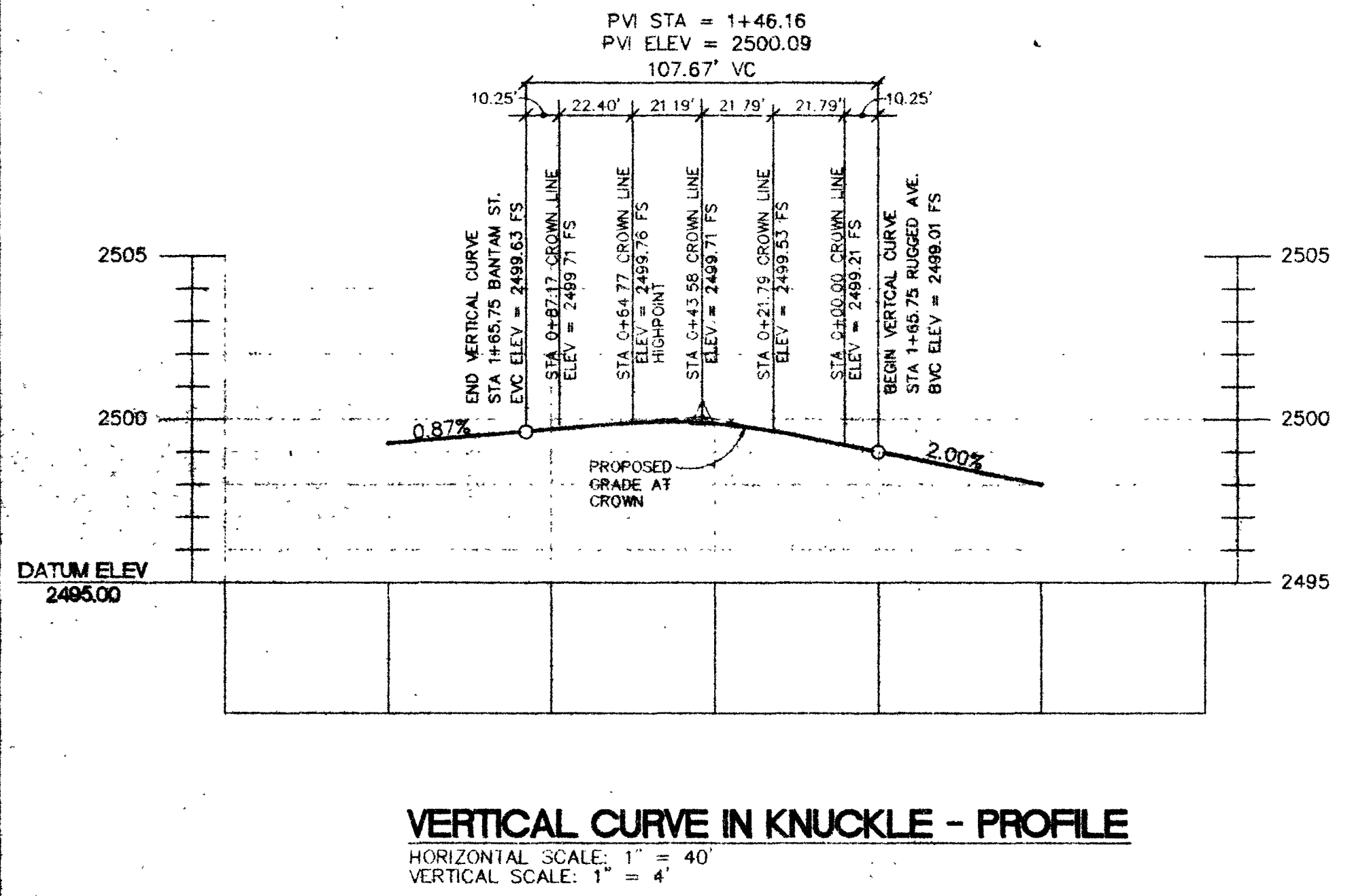
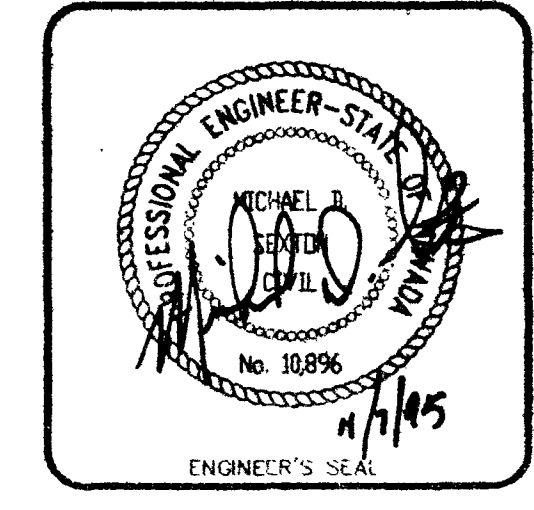
901 N. Green Valley Parkway
PO BOX 1000, Nevada, 89714
TEL: 702-735-7275
FAX: 702-735-7280
P.L.S. ENGINEERING, PLANNING, SURVEYING, CONSTRUCTION SERVICES

ELKHORN SPRINGS

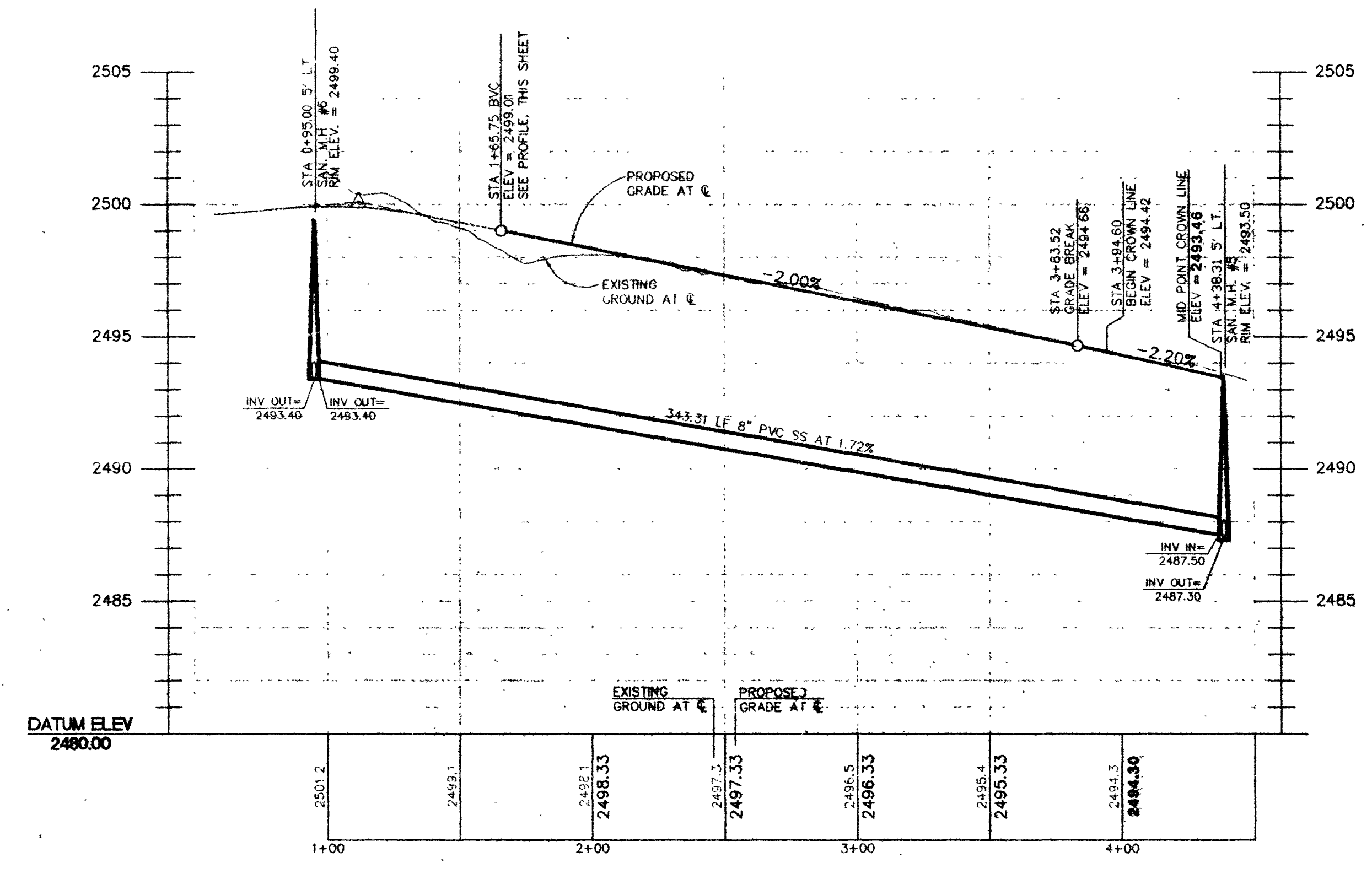
**PARCEL 6
ELKHORN SPRINGS
RUGGED AVENUE
PLAN AND PROFILE**



Call before you Dig
1-800-227-2600



VERTICAL CURVE IN KNUCKLE - PROFILE
HORIZONTAL SCALE: 1" = 40'
VERTICAL SCALE: 1" = 4'



RUGGED AVE. - PROFILE
HORIZONTAL SCALE: 1" = 40'
VERTICAL SCALE: 1" = 4'

Job Number	51848	Drawn by	Scale	1" = 40'
Sheet Number	6 OF 8	Checked by	File No.	848MP
Date	NOV 6, 2015	Drawn by		

DATE PLOT

